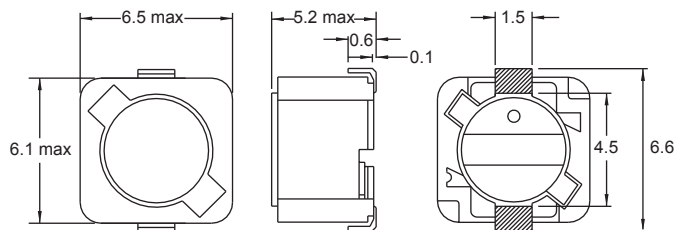
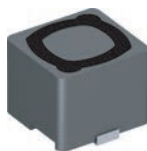
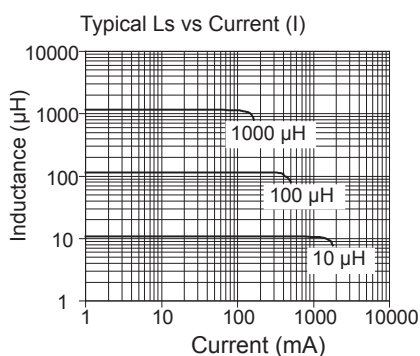
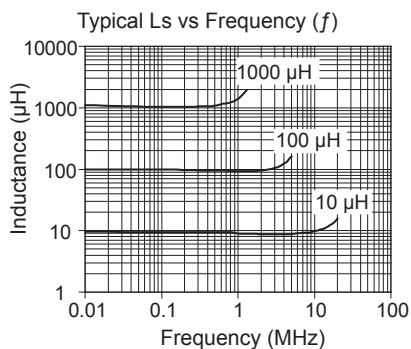
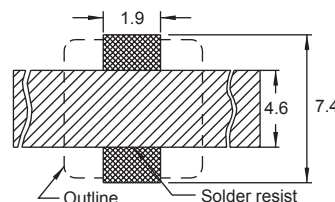


PIS 2416

Shielded



Recommended Layout for solder pads
* In order to prevent short circuit,
a solder resist is recommended



Part No	Inductance L (µH)	f _L (kHz)	Tol ± (%)	DCR max (Ω)	Rated DC Current I (A)
PIS2416-4R7M-04	4.7	1	20	0.09	2.40
PIS2416-100M-04	10	1	20	0.12	1.35
PIS2416-120M-04	12	1	20	0.13	1.20
PIS2416-150M-04	15	1	20	0.18	1.10
PIS2416-180M-04	18	1	20	0.24	1.00
PIS2416-220M-04	22	1	20	0.27	0.91
PIS2416-270M-04	27	1	20	0.3	0.82
PIS2416-330M-04	33	1	20	0.33	0.75
PIS2416-390M-04	39	1	20	0.37	0.69
PIS2416-470M-04	47	1	20	0.52	0.62
PIS2416-560M-04	56	1	20	0.56	0.58
PIS2416-680M-04	68	1	20	0.63	0.52
PIS2416-820M-04	82	1	20	0.71	0.47
PIS2416-101M-04	100	1	20	1.03	0.43
PIS2416-121M-04	120	1	20	1.15	0.39
PIS2416-151M-04	150	1	20	1.68	0.35
PIS2416-181M-04	180	1	20	1.87	0.32
PIS2416-221M-04	220	1	20	2.08	0.29
PIS2416-271M-04	270	1	20	2.37	0.26
PIS2416-331M-04	330	1	20	2.67	0.23
PIS2416-391M-04	390	1	20	2.94	0.22
PIS2416-471M-04	470	1	20	3.93	0.2
PIS2416-561M-04	560	1	20	5.43	0.18
PIS2416-681M-04	680	1	20	7.32	0.17
PIS2416-821M-04	820	1	20	8.24	0.15
PIS2416-102M-04	1000	1	20	9.26	0.14

Revision date : 15 Aug 2014

Core Material : Ferrite, magnetically shielded.

SPQ : Taped / Reel 1000 [-04]

Remarks : - Additional gluing to PCB board is recommended.
- I - see description in Inductors Technical Data.