



RoHS compliant

Industrial 5/6-Port Unmanaged Ethernet Switches

■ ■ EH2005/EH2006

EH2005-Fm (Multi-mode)



EH2005-Fs (Single-mode)

- 4 x 10/100BaseT(X) (RJ45)
- 1 x fiber port with ST (-Fm model) or SC (-Fs model)
- Broadcast storm protection
- Support IEEE 802.3/ 802.3u/ 802.3x
- 10/100M, Full/Half-Duplex, MDI/MDI-X auto-detection
- Local area transmit distance of 2 Km with Multi-mode Fiber connections
- Long-haul transmit distance of 20 Km with Single-mode Fiber connections
- Redundant dual DC power inputs
- Operating temperature ranges from 0~60°C
- Rugged high-strength plastic case
- DIN-Rail or wall mount support



EH2006

The EH Series include 5/6-port Ethernet switches that provide two solutions, one with 6 RJ-45 ports and the other with 4 RJ-45 ports and one optic ST/SC port for your industrial applications. These EH series have been designed for industrial environments, such as in hazardous locations that comply with FCC, TUV, UL, and CE standards.

EH series protect itself from receiving too many broadcast packets. During normal use, broadcast packets will be forwarded to all ports except the source port. However, EH series will discard broadcast or multicast packets if the number of those packets exceeds a threshold in a preset period of time. When the preset period expires (about 800ms), it will then resume receiving broadcast or multicast packets until the threshold is reached again.

EH series provide 2 redundant power inputs that can be connected simultaneously to wide-range DC power sources. If one of the power inputs fails, the other live source acts as a backup to provide the EH series' power needs automatically.

Industrial 5/6-Port Unmanaged Ethernet Switches

➔ **EH2005-Fm/Fs / EH2006**

Specifications

Ethernet

| | |
|--------------------------|--|
| Transmission Rate | 10/100Mbps |
| Total Port | 5 / 6 |
| 10/100Mbps | 5 / 6 |
| Connector | RJ-45 x 4+ Fm/Fs x 1 (EH2005-Fm/Fs) / RJ-45 x 6 (EH2006) |
| Auto MDI/MDI-X | Yes |

Power

| | |
|--------------------|---------------------------------------|
| Input | DC 9 ~ 30V |
| Connector | 3-pin 5.08mm pitch terminal block x 2 |
| Consumption | 5.4Watts Max |

Environment

| | |
|----------------------|--|
| Operating | 0°C ~ 60°C (32° ~ 140°F) |
| Storage | -20° ~ 70°C (-4°~ 185°F), 5 ~ 95%RH |
| High Altitude | Certified for 4000m altitude according to IEC 60068-2-13 |

Dimension

| | |
|------------------|--------------------|
| W x H x D | 45mm x 90mm x 80mm |
|------------------|--------------------|

MTBF(Hour)

| | |
|------------------|---------------------------------------|
| Preceding | 107296(EH2005-Fm/Fs) / 112092(EH2006) |
|------------------|---------------------------------------|

Ordering Information

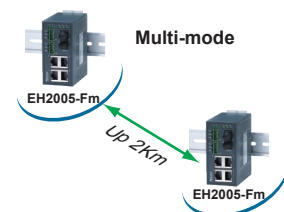
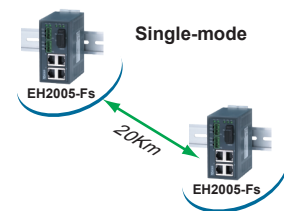
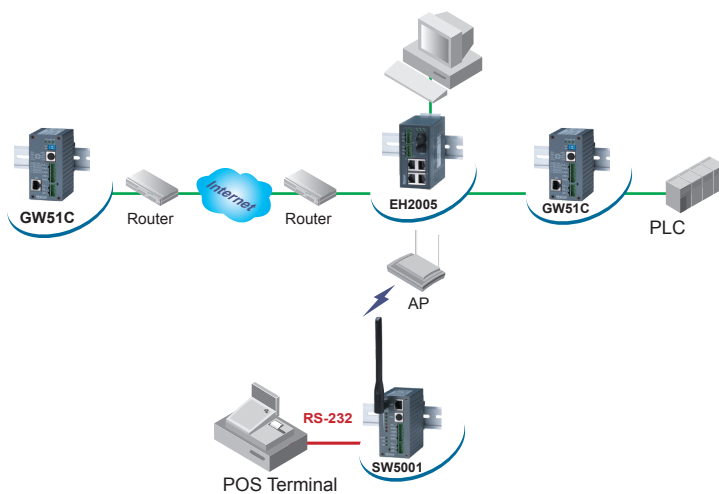
| | |
|------------------------|---|
| 1P1EH2005FM001G | Industrial 5-port Unmanaged Ethernet Switch with EH2005-Fm |
| 1P1EH2005FS001G | Industrial 5-port Unmanaged Ethernet Switch with EH2005-Fs |
| 1P1EH200600001G | Industrial 6-port Unmanaged Ethernet Switch with 6x 10/100TX EH2006 |

Optional Accessories

| | |
|----------------------|---|
| Power Adapter | UN315-1212 (US-Y): Y-Type power adaptor, 100~240VAC input, 1.25A @ 12VDC output, US plug, LV6 UNE315-1212 (EU-Y): Y-Type power adaptor, 100~240VAC input, 1.25A @ 12VDC output, EU plug, LV6 |
|----------------------|---|

Optical Fiber Specifications

| Speed | Fast Ethernet 100BaseFX | |
|----------------------------------|----------------------------------|------------------------|
| Mode | Multi-mode | Single-mode |
| Connectors | ST | SC |
| Typical Distance | 2Km(Max) | 20Km(Max) |
| Cable Size Core /Cladding | 62.5/125 um | 9/125 um |
| Wavelength | 1270(Min)~1360(Max) nm | 1263(Min)~1360(Max) nm |
| Max. TX Power | -14 dBm | -8 dBm |
| Min. TX Power | -19 dBm | -15 dBm |
| RX Sensitivity | -34 dBm(Typical) -32 dBm(Max) | -32 dBm(Max) |
| Link Budget | ---- | ---- |
| Saturation / Overload | ---- | ---- |
| Typical Budget | ---- | ---- |



Atop Technologies, Inc.

TEL : +886-3-5508137
 FAX : +886-3-5508131
 sales@atop.com.tw
 http : //www.atop.com.tw

Design and specification are subjected to change without notice.

All product names referenced herein are registered trademarks of their respective companies.

