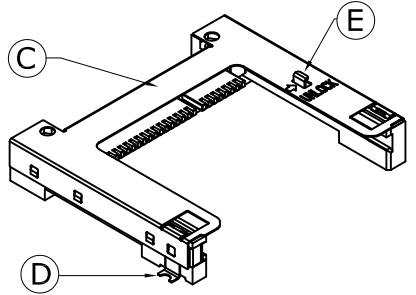
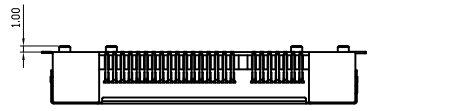


SWITCH CIRCUIT			MATERIAL AND FINISH AS BELOW						
1	2	3	A	Housing	LCP UL94V-0 Black	E	Lock	Stainless Steel SUS304	
WHEN CARD IS EJECTED	WHEN CARD IS INSERTED		B	Contact	Phosphor Bronze C5210, 0.2t, 10u" Gold	F			
			C	Shell	Stainless Steel SUS304, 0.2t	G			
			D	Hold down	Brass C2680, 0.2t, Tin Plating	H			



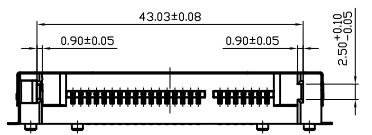
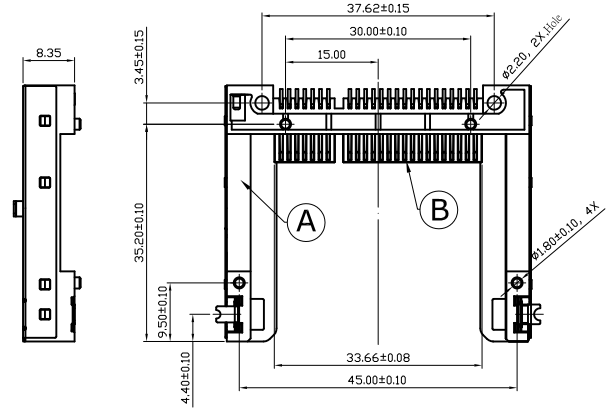
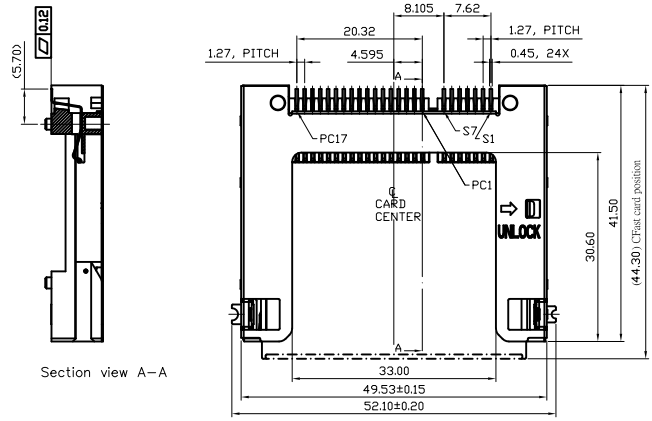
SPECIFICATION:

- 1. ELECTRICAL
 - 1.1 Current Rating: 1.5A
 - 1.2 Voltage Rating: 100V AC/DC
 - 1.3 Contact Resistance: 30mΩ
 - 1.4 Insulation Resistance: 1000MΩ
 - 1.5 Dielectric Withstanding Voltage: 500VDC

- 2. MECHANICAL
 - 2.1 Durability: 10000 Cycle
 - 2.2 Insertion Force: 28.8N max.
 - 2.3 Extraction Force: 3.7~24.5N max.

- 3. ENVIRONMENTAL
 - 3.1 Operating temperature range: -40°C~+85°C
 - 3.2 Storage temperature range: -40°C~+85°C

- 4. SOLDER ABILITY
 - 4.1 Recommended IR Reflow Temperature: 260°C



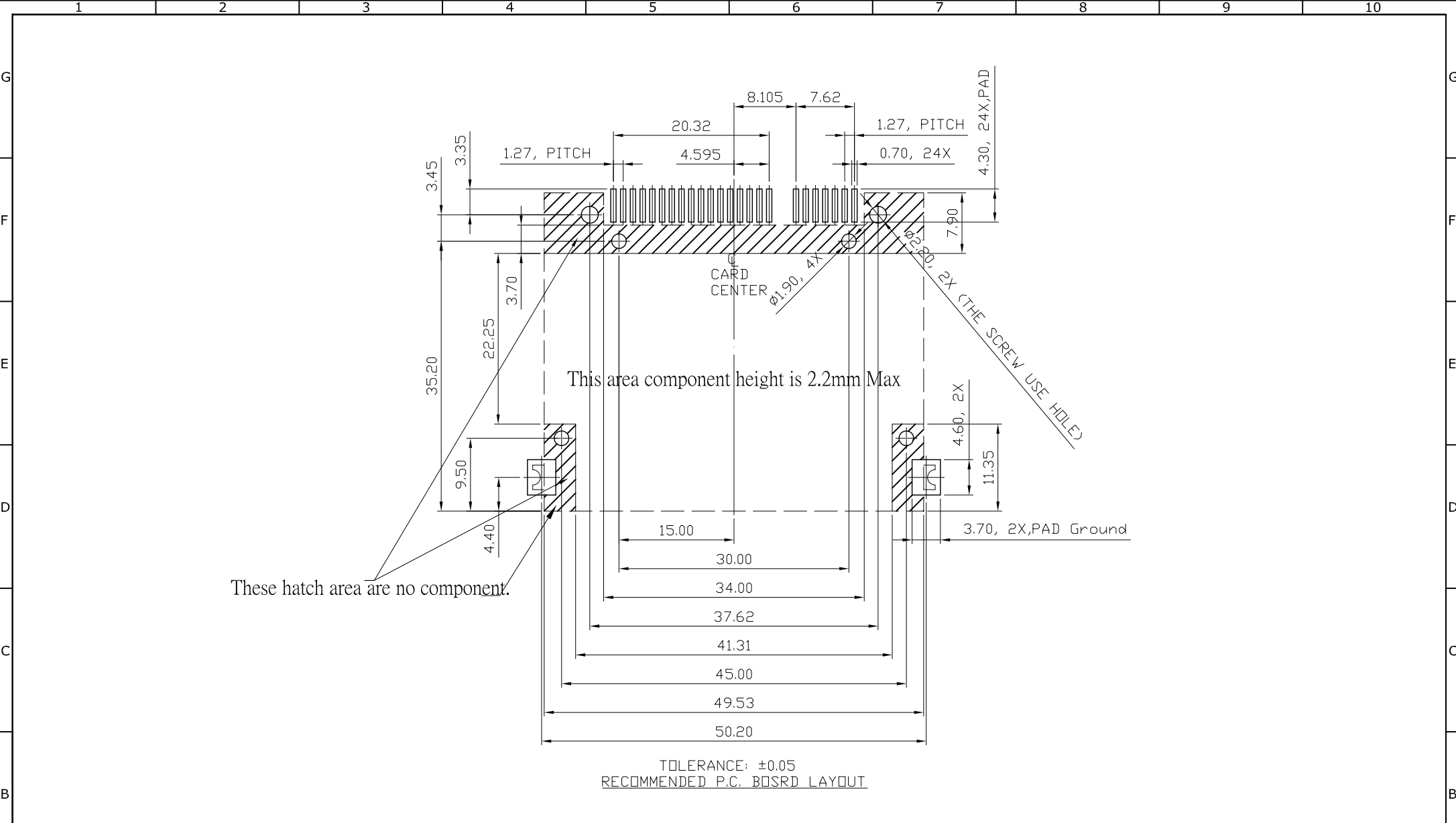
P1	P2	P3	P4	P5	P6	P7	P8	P9	P10	P11	P12
PIN ASSIGNMENT											
120B-835D00			Height 8.35, Card Lock Type II, Contact area 10u" Gold								
PRODUCT NO.			DESCRIPTION								


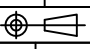
UNLESS OTHERWISE SPECIFIED TOLERANCE		
ANGLES	ANG.	±5°
LINEAR	0.	±0.3
	0.0	±0.25
	0.00	±0.20
SCALE	AS SHOWN	UNIT: mm
DRAWN	Willis	2013/05/07
CHECKED	Angel	2013/05/07
APPROVED	Ken	2013/05/07

www.attend.com.tw

DRAWN NAME: CFAST Socket 8.35H Card Lock Type II

REV.	DESCRIPTION	DATE	REV.	DESCRIPTION	DATE



						UNLESS OTHERWISE SPECIFIED TOLERANCE			 www.attend.com.tw	
						ANGLES	ANG.	±5°		
						LINEAR	0.	±0.3		
							0.00	±0.25		
						SCALE	AS SHOWN	UNIT: mm	DRAWN NAME: CFAST Socket 8.35H Card Lock TypeII	
						DRAWN	Willis	2013/05/07	PRODUCT NO. 120B-835D00	
						CHECKED	Angel	2013/05/07	FILE NAME 120B-835D00_B_2	
						APPROVED	Ken	2013/05/07		
REV.	DESCRIPTION		DATE	REV.	DESCRIPTION		DATE	 SIZE A4	REV. 1.0	
1				4						