

REV.	DESCRIPTION	DRAWN	DATE
1	INITIAL RELEASE	FROS	2015/03/31
2	Revised Packing	FROS	2015/08/10

**SPECIFICATION:**

**1. ELECTRICAL**

- 1.1 Current Rating: 0.5A per pin
- 1.2 Voltage Rating: 50VDC
- 1.3 Contact Resistance: 55mΩ Max
- 1.4 Insulation Resistance: 500MΩ Min
- 1.5 Dielectric Withstanding Voltage: 300VAC

**2. MECHANICAL**

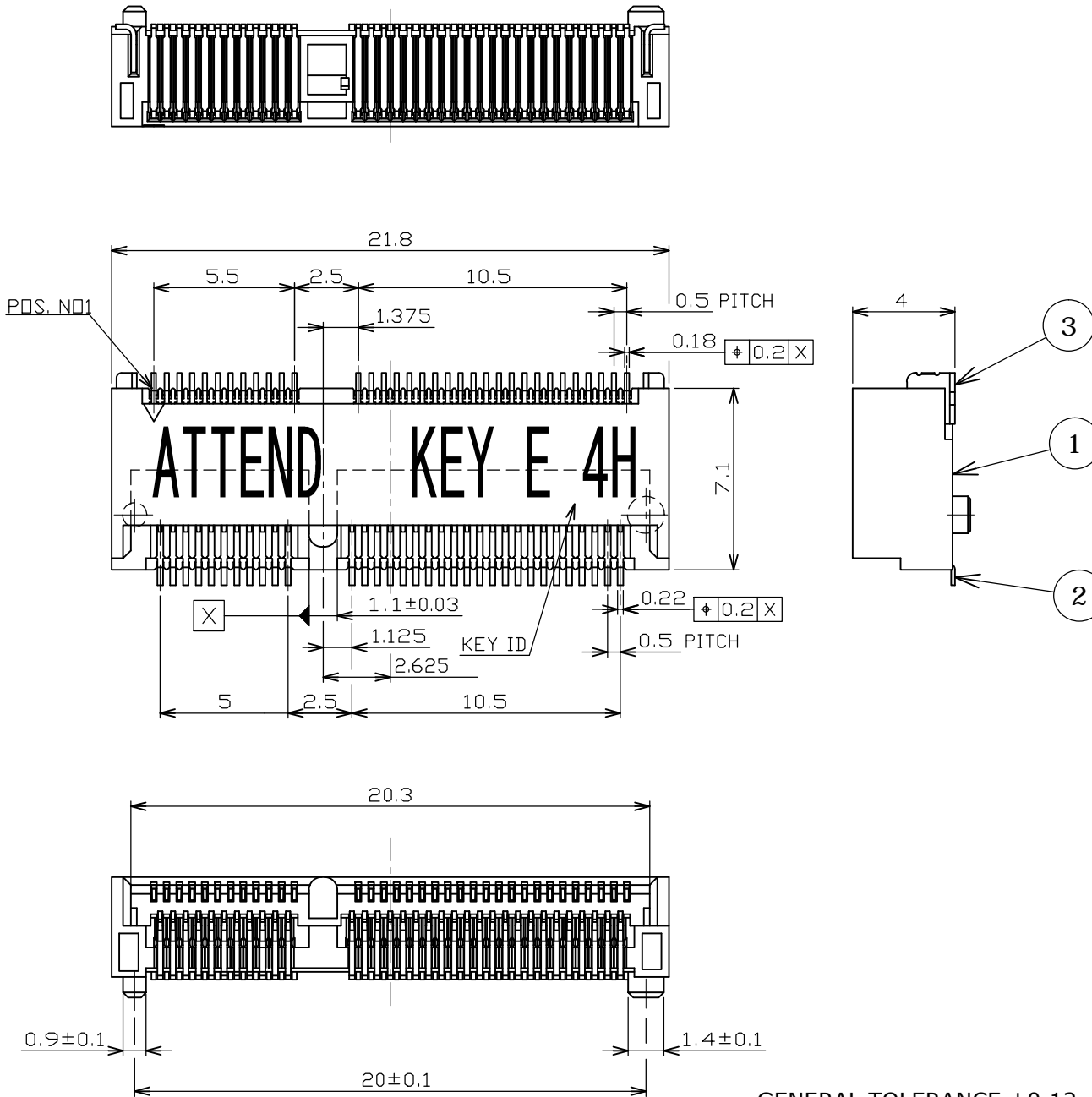
- 2.1 Durability: 200 Cycle
- 2.2 Insertion Force: 20N max.
- 2.3 Extraction Force: 25N max.

**3. ENVIRONMENTAL**

- 3.1 Operating temperature range: -40°C~+85°C
- 3.2 Storage temperature range: -40°C~+85°C

**4. SOLDER ABILITY**

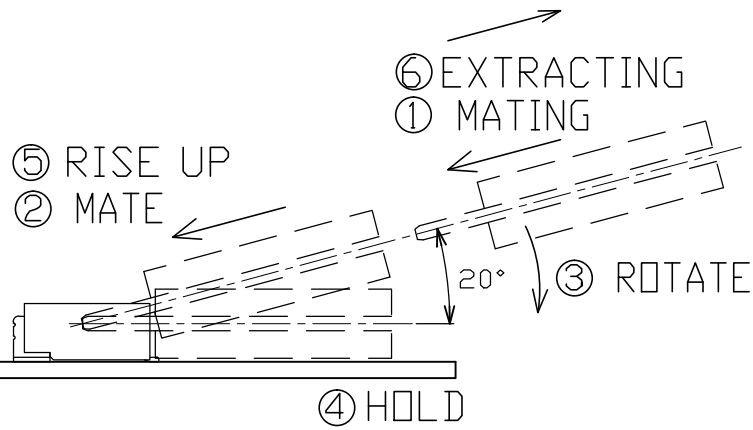
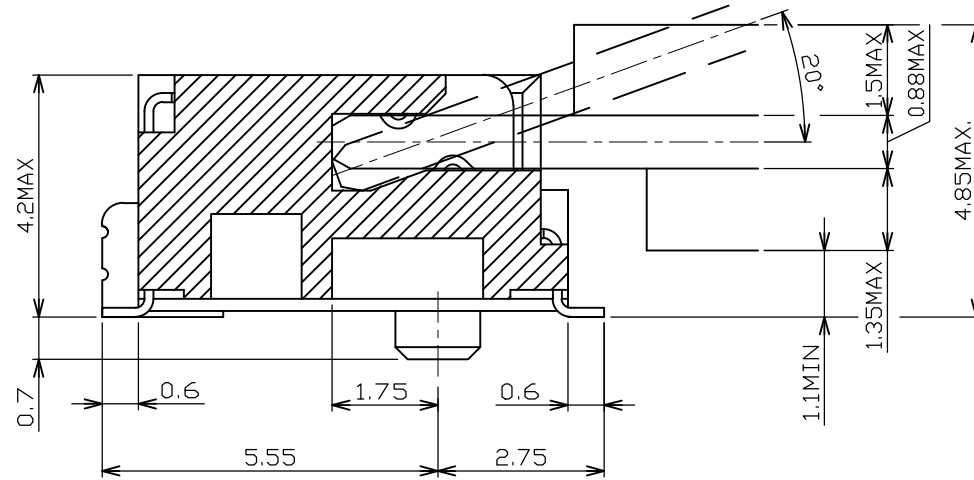
- 4.1 Recommended IR Reflow (Wave Soldering) Temperature: 260°C
- 4.2 Recommended PCB Thickness: 1.0mm




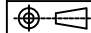
GENERAL TOLERANCE ±0.12

3	PEG	COPPER ALLOY, GOLD FLASH, UNDER PL 50u" NICKEL PL.	
2	TERMINAL	COPPER ALLOY, GOLD FLASH, UNDER PL 50u" NICKEL PL.	
1	HOUSING	HIGH TEMPERATURE THERMO PLASTIC UL94V-0	
NO.	PART NAME	DESCRIPTION	
UNLESS OTHERWISE SPECIFIED TOLERANCE			
UNIT:	DECIMAL	LINEAR	ANGLES
mm	X.	±0.50	±5°
	X.X	±0.25	±3°
	X.XX	±0.12	±1°
			WWW.ATTEND.COM.TW
DRAWN	Fros	2015/3/30	DRAWN NAME:
CHECKED	Ron	2015/3/30	M.2 CONNECTOR KEY ID " E "
APPROVED	Albert	2015/3/30	0.5MM PITCH 4H ASS'Y
SCALE	4/1	SHEET	1/5
SIZE	A4	PRODUCT NO.	123A-42EA0-R01
FILE NAME		123A-42EA0-R01_B_1	

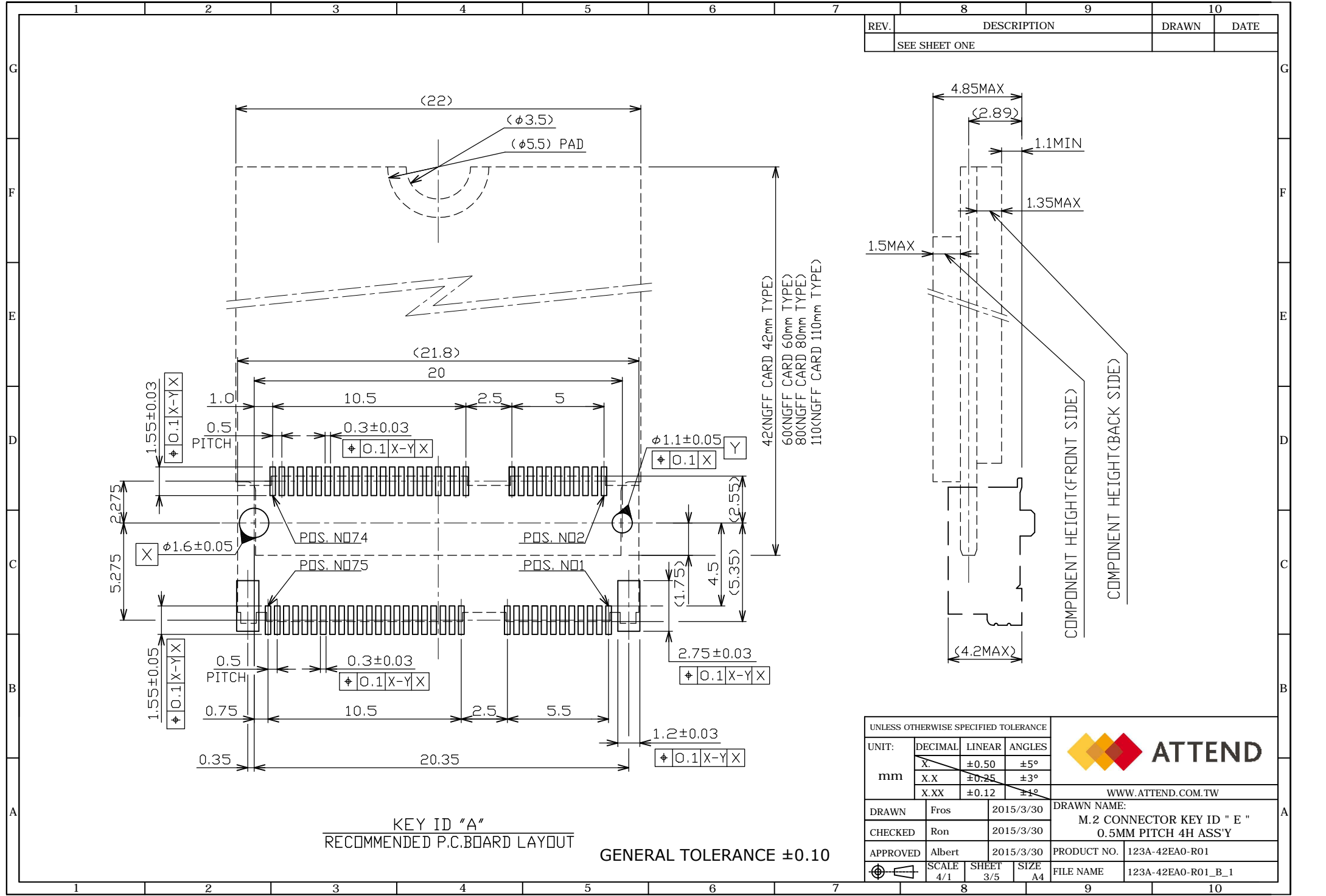
REV.	DESCRIPTION	DRAWN	DATE
	SEE SHEET ONE		



GENERAL TOLERANCE  $\pm 0.12$

UNLESS OTHERWISE SPECIFIED TOLERANCE				 <a href="http://WWW.ATTEND.COM.TW">WWW.ATTEND.COM.TW</a>	
UNIT:	DECIMAL	LINEAR	ANGLES		
mm	X.	$\pm 0.50$	$\pm 5^\circ$		
	X.X	$\pm 0.25$	$\pm 3^\circ$		
	X.XX	$\pm 0.12$	$\pm 1^\circ$		
DRAWN	Fros	2015/3/30	DRAWN NAME:		
CHECKED	Ron	2015/3/30	M.2 CONNECTOR KEY ID " E "		
APPROVED	Albert	2015/3/30	0.5MM PITCH 4H ASS'Y		
	SCALE	SHEET	SIZE	PRODUCT NO.	123A-42EA0-R01
	4/1	2/5	A4	FILE NAME	123A-42EA0-R01_B_1

REV.	DESCRIPTION	DRAWN	DATE
	SEE SHEET ONE		



KEY ID "A"  
RECOMMENDED P.C.BOARD LAYOUT

GENERAL TOLERANCE ±0.10

UNLESS OTHERWISE SPECIFIED TOLERANCE

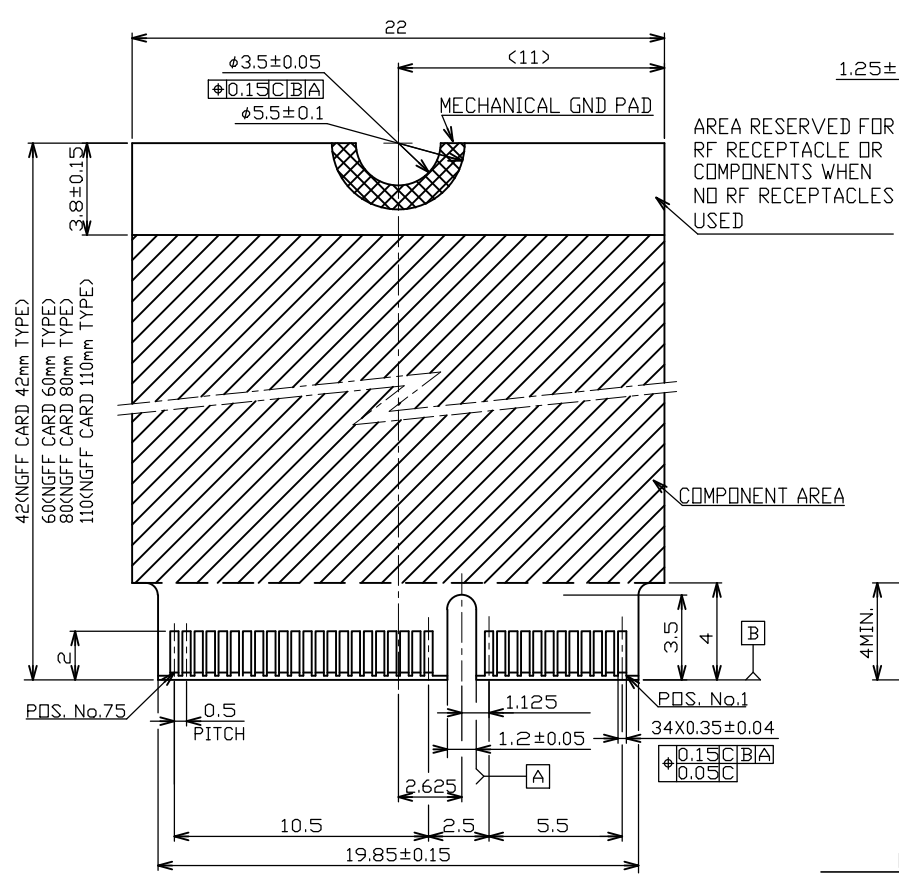
UNIT:	DECIMAL	LINEAR	ANGLES
mm	X.X	±0.50	±5°
	X.XX	±0.25	±3°
	X.XXX	±0.12	±1°



WWW.ATTEND.COM.TW

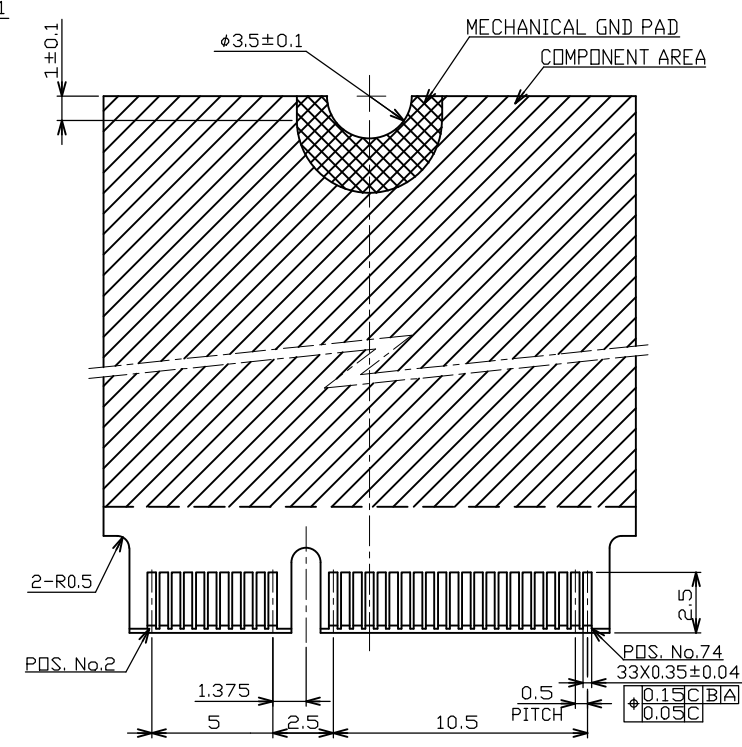
DRAWN	Fros	2015/3/30	DRAWN NAME:	M.2 CONNECTOR KEY ID " E "
CHECKED	Ron	2015/3/30		0.5MM PITCH 4H ASS'Y
APPROVED	Albert	2015/3/30	PRODUCT NO.	123A-42EA0-R01
SCALE	4/1	SHEET	3/5	SIZE
				A4
FILE NAME	123A-42EA0-R01_B_1			

REV.	DESCRIPTION	DRAWN	DATE
	SEE SHEET ONE		



FRONT SIDE

KEY ID "A"  
RECOMMENDED MODULE LAYOUT



BACK SIDE

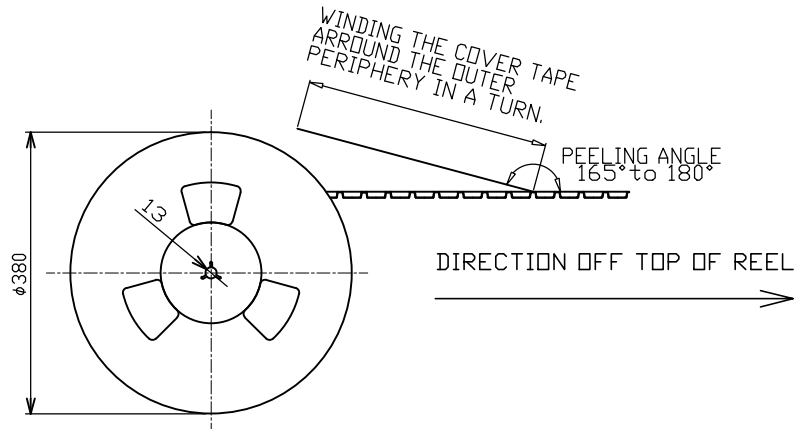
GENERAL TOLERANCE ±0.15

UNLESS OTHERWISE SPECIFIED TOLERANCE					
UNIT:	DECIMAL	LINEAR	ANGLES		
mm	X.	±0.50	±5°		
	X.X	±0.25	±3°		
	X.XX	±0.12	±1°		
DRAWN	Fros	2015/3/30	DRAWN NAME: M.2 CONNECTOR KEY ID " E " 0.5MM PITCH 4H ASS'Y		
CHECKED	Ron	2015/3/30			
APPROVED	Albert	2015/3/30			
SCALE	3.2	SHEET	4/5	PRODUCT NO.	123A-42EA0-R01
		SIZE	A4	FILE NAME	123A-42EA0-R01_B_1



WWW.ATTEND.COM.TW

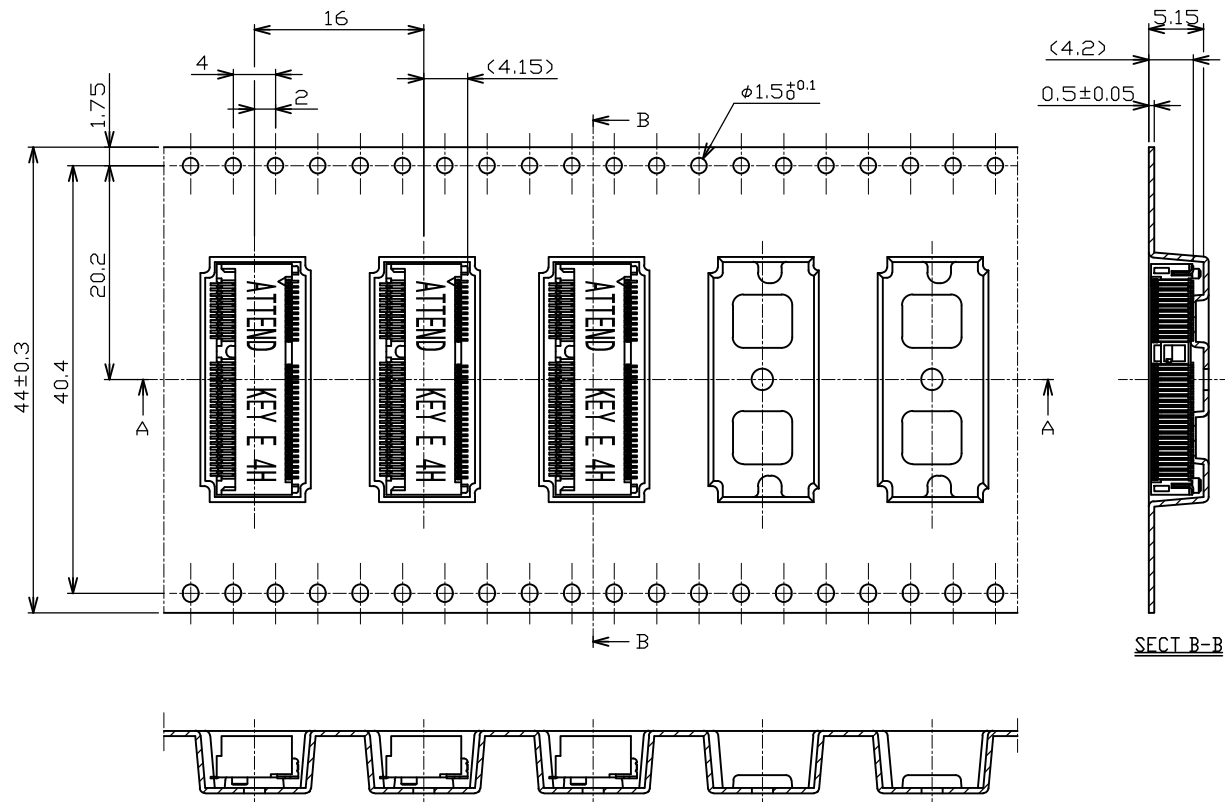
REV.	DESCRIPTION	DRAWN	DATE
	SEE SHEET ONE		




### PACKAGING SPECIFICATION:

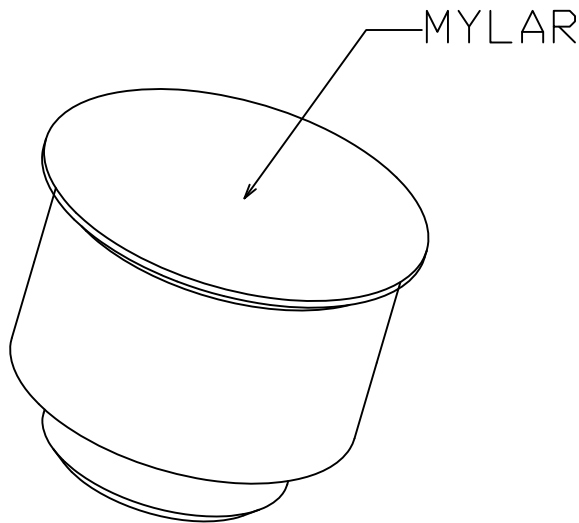
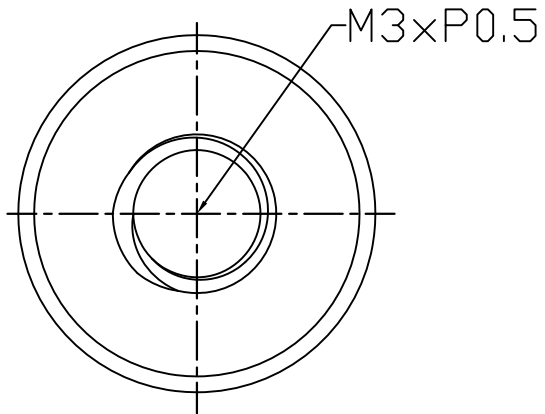
1. MATERIAL
  - 1.1 Embossed Carrier Tape: PS Black
  - 1.2 Top Cover Tape: PET  
0.1N-1.3N (Peel Speed 300mm/Minute)
  - 1.3 Taping Reel: PS Blue

2. PACKING
  - 2.1 Quantity:
    - 1,000 Piece / Reel
    - △ 6 Reel / Carton
    - 2 6,000 Piece / Outer Carton
  - 2.2 Net Weight: 4.2Kg
  - 2.3 Gross Weight: 6.4Kg / Carton



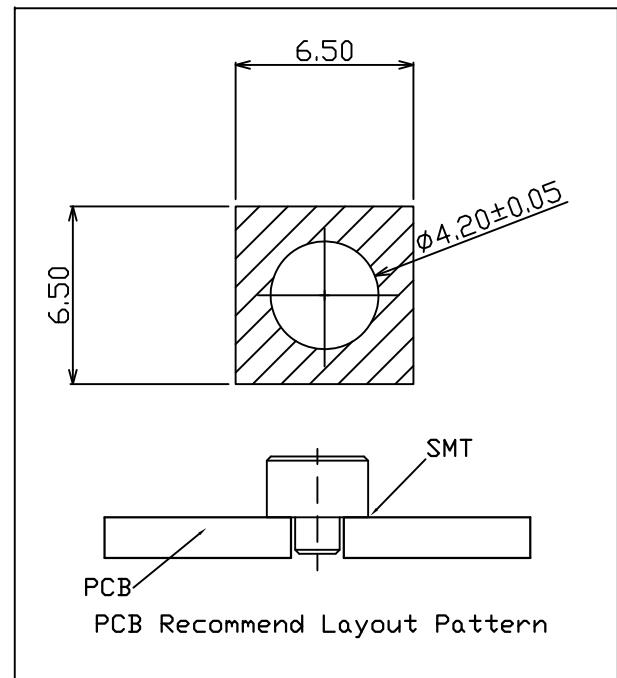
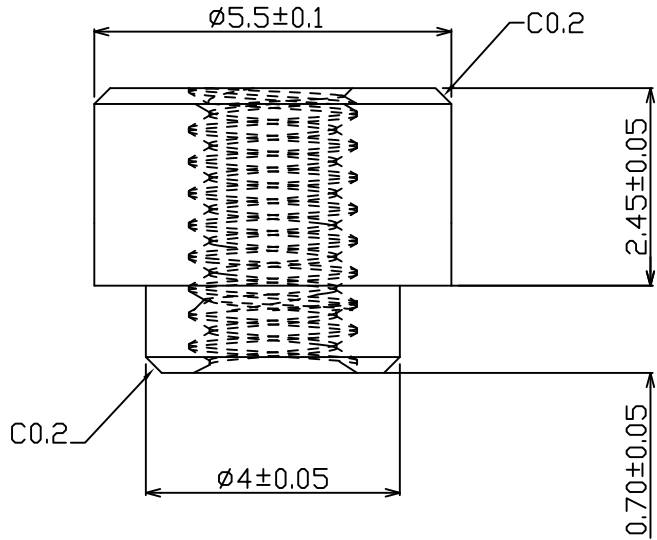
GENERAL TOLERANCE ±0.5

UNLESS OTHERWISE SPECIFIED TOLERANCE				 WWW.ATTEND.COM.TW	
UNIT:	DECIMAL	LINEAR	ANGLES		
mm	X.	±0.50	±5°		
	X.X	±0.25	±3°		
	X.XX	±0.12	±1°		
DRAWN	Fros	2015/3/30	DRAWN NAME:		
CHECKED	Ron	2015/3/30	M.2 CONNECTOR KEY ID " E "		
APPROVED	Albert	2015/3/30	0.5MM PITCH 4H ASS'Y		
SCALE	1.4	SHEET	5/5	SIZE	A4
PRODUCT NO.	123A-42EA0-R01		FILE NAME	123A-42EA0-R01_B_1	



NOTE:

- 1.MATERIAL: Copper Alloy
- 2.Plating: Sn.



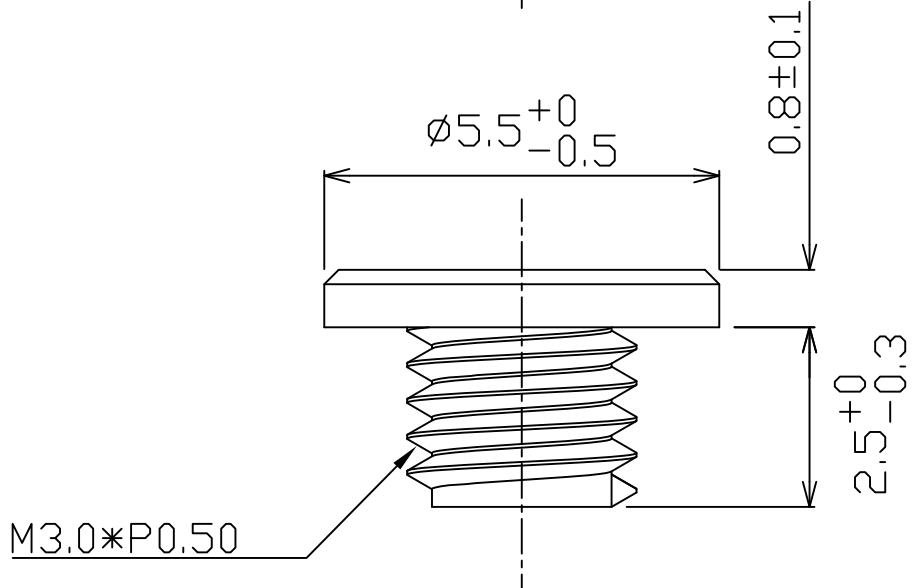
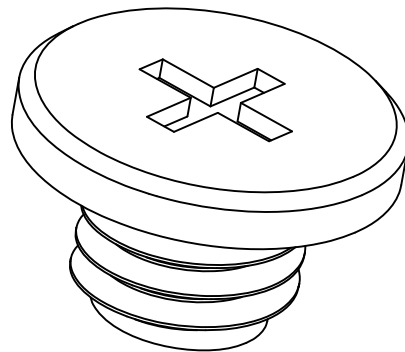
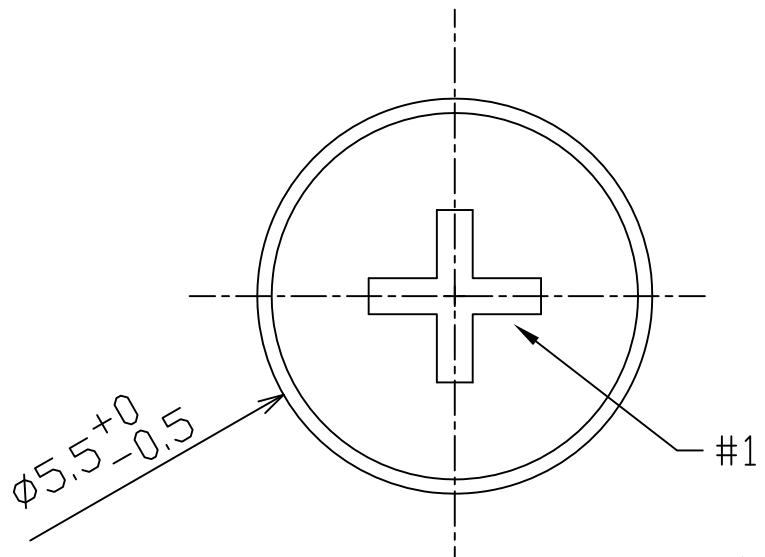
REV.	DESCRIPTION	DATE	REV.	DESCRIPTION	DATE
1			4		
2			5		
3			6		

UNLESS OTHERWISE SPECIFIED TOLERANCE		
ANGLES	ANG.	±5°
	0.	±0.3
LINEAR	0.0	±0.25
	0.00	±0.20
SCALE	AS SHOWN	UNIT: mm
DRAWN	Willis	2013/11/13
CHECKED	Angel	2013/11/13
APPROVED	Ken	2013/11/13
SIZE	A4	REV. 1.0



www.attend.com.tw	
DRAWN NAME: M.2 Connector Stand Off	
PRODUCT NO.	123A-NUT-42
FILE NAME	123A-NUT-42_B_1

- △ Revise:
- △ Revise:
- △ Revise:



Note:  
 1. Material: Low-carbon steel  
 2. Plating: Nickel

						UNLESS OTHERWISE SPECIFIED TOLERANCE			 www.attend.com.tw	
						ANGLES	ANG.	$\pm 5^\circ$		
						LINEAR	0.	$\pm 0.3$		
							0.00	$\pm 0.20$		
						SCALE	AS SHOWN	UNIT: mm	DRAWN NAME: M.2 Series Screw	
A						DRAWN	Willis	2013/08/06	PRODUCT NO. 123A-SCREW	
A						CHECKED	Angel	2013/08/06	FILE NAME 123A-SCREW_B_1	
A						APPROVED	Ken	2013/08/06		
REV.	DESCRIPTION		DATE	REV.	DESCRIPTION		DATE	SIZE A4	REV. 1.0	
1				4						