

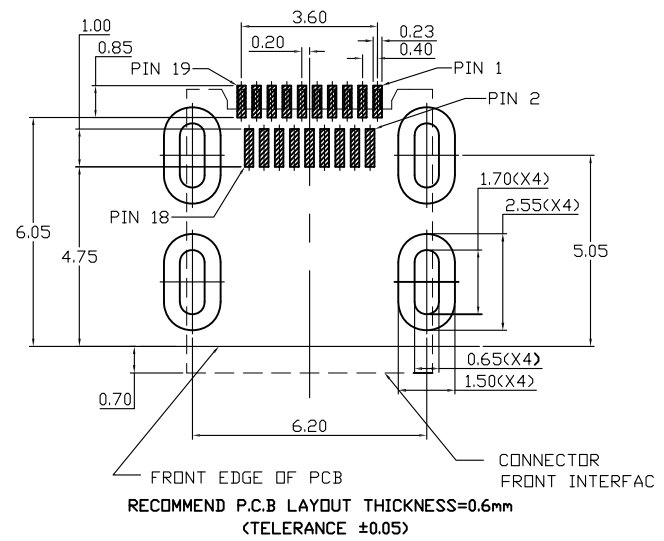
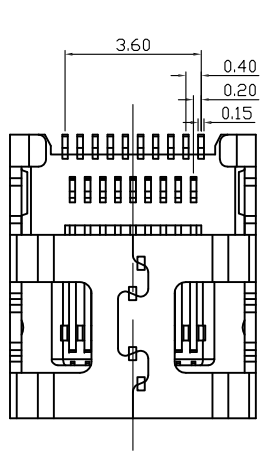
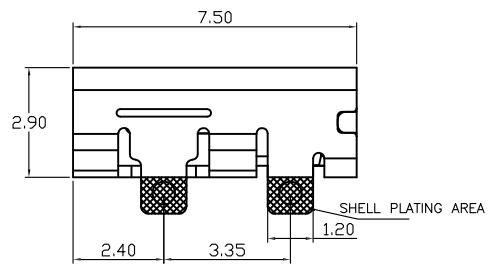
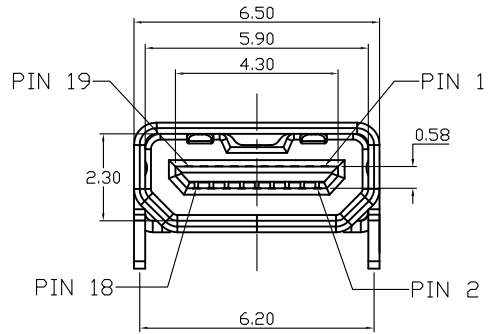
CONNECTION	SIGNALS
FIRST MAKE	TYPE D CONNECTOR
SECOND MAKE	CONNECTOR SHELL
THIRD MAKE	PINS 1 - 18
	PIN 19 (+5V POWER)

PIN	SIGNAL ASSIGNMENT
1	Hot Plug Detect
2	Utility
3	TMDS Data2+
4	TMDS Data2 Shield
5	TMDS Data2-
6	TMDS Data1+
7	TMDS Data1 Shield
8	TMDS Data1-
9	TMDS Data0+
10	TMDS Data0 Shield
11	TMDS Data0-
12	TMDS Clock+
13	TMDS Clock Shield
14	TMDS Clock-
15	CEC
16	DDC/CEC Ground
17	SCL
18	SDA
19	+5V Power

REV.	DESCRIPTION	DRAWN	DATE
1	INITIAL RELEASE	Willis	2013/09/16
2	Revised Voltage Rating	FROS	2014/11/25
3	Corrected shell material	FROS	2016/08/05

**SPECIFICATION:**

1. ELECTRICAL
  - 1.1 Current Rating: 0.5A per pin
  - 1.2 Voltage Rating: 40V AC/DC
  - 1.3 Contact Resistance: 10mΩ
  - 1.4 Insulation Resistance: 100MΩ
  - 1.5 Dielectric Withstanding Voltage:
    - Initial:500VAC
    - Final:250VAC
2. MECHANICAL
  - 2.1 Durability: 5000 Cycle
  - 2.2 Insertion Force: 5 to 25N max.
  - 2.3 Extraction Force: 44.1N max.
3. ENVIRONMENTAL
  - 3.1 Operating temperature range: -40°C to 85°C
  - 3.2 Storage temperature range: -40°C to +85°C
4. SOLDER ABILITY
  - 4.1 Recommended IR-Reflow Temperature: 260°C 10Sec
  - 4.2 Recommended PCB Thickness: 1.0mm



3	SHELL	Stainless Steel 304,Nickel Plating, DIP Area: Gold Flash			
2	CONTACT	Phosphor Bronze C5210,Contact Area: 10u" Gold			
1	HOUSING	LCP, UL94V-0, Black			
NO. PART NAME		DESCRIPTION			
UNLESS OTHERWISE SPECIFIED TOLERANCE					
UNIT:	DECIMAL	LINEAR	ANGLES		
mm	X.	±0.50	±5°		
	X.X	±0.25	±3°		
	X.XX	±0.12	±1°		
DRAWN			Willis	2013/09/16	DRAWN NAME: HDMI D Type Receptacle, 19Pin R/A SMT + Shell DIP (Straight) w/o Peg
CHECKED			Angel	2013/09/16	
APPROVED			Ken	2013/09/16	PRODUCT NO. 206H-SDAN-R01
SCALE		SHEET	SIZE	FILE NAME	
5/1		1/1	A4	206H-SDAN-R01_B_3	



WWW.ATTEND.COM.TW