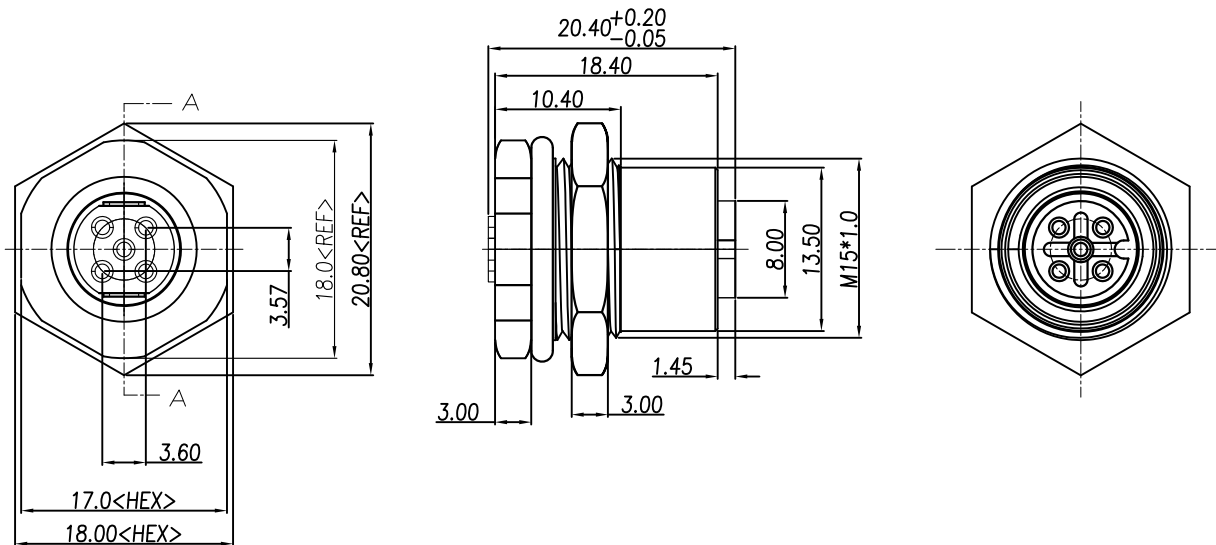


1	2	3	4	5	6	7	8	9	10
SWITCH CIRCUIT			MATERIAL AND FINISH AS BELOW						
WHEN CARD IS EJECTED		WHEN CARD IS INSERTED		A	Housing	PBT UL94V-0, Color: Black	E	O-Ring	NBR Black
				B	Contact	Brass C3604, Contact Area:10u" Gold Plating Over Nickel	F	O-Ring	EPDM Black
				C	Shell	Brass C3604, Nickel Plated	G	Epoxy Base	Epoxy Black
				D	Nut	Brass C3604, Nickel Plated	H		



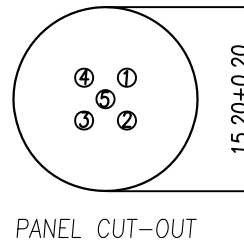
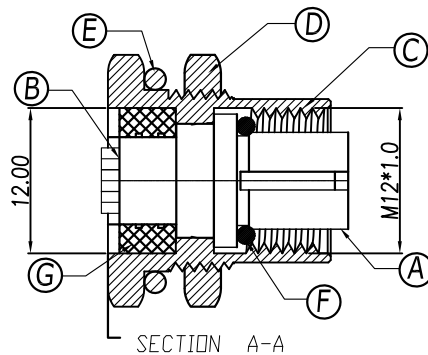
## SPECIFICATION:

### 1. ELECTRICAL

- 1.1 Current Rating: 5A per pin
- 1.2 Voltage Rating: 125V
- 1.3 Water Proof: IP X7

### 2. ENVIRONMENTAL

- ⚠ 2.1 Operating temperature range: -40°C ~ +85°C



P1	P2	P3	P4	P5	P6	P7	P8	P9	P10	P11	P12
----	----	----	----	----	----	----	----	----	-----	-----	-----

### PIN ASSIGNMENT

216A-05FAF M12 A Code 5Pin Receptacle, Female Solder Type, Front Fastened, Contact: 10u" Gold Plating

### PRODUCT NO. DESCRIPTION

UNLESS OTHERWISE SPECIFIED TOLERANCE

ANGLES	ANG.	±5°
LINEAR	0.	±0.3
	0.0	±0.25
	0.00	±0.20

SCALE AS SHOWN UNIT: mm

DRAWN Willis 2013/12/24

CHECKED Angel 2013/12/24

APPROVED Ken 2013/12/24



www.attend.com.tw

DRAWN NAME: M12 A- Code 5Pin Receptacle Female Solder Type, Front Fastened

PRODUCT NO. 216A-05FAF

FILE NAME 216A-05FAF\_B\_2

REV.	DESCRIPTION	DATE	REV.	DESCRIPTION	DATE	SIZE	REV.
1		2017/10/26				A4	1.0
2	INITIAL RELEASE	2013/12/24					