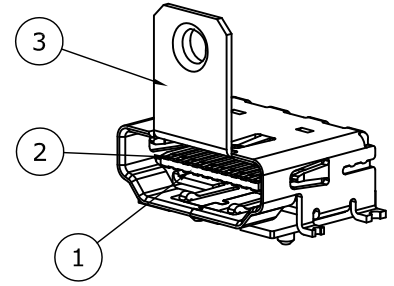
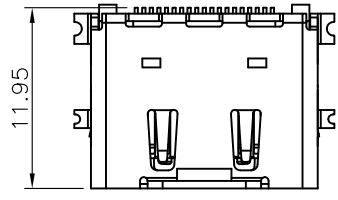
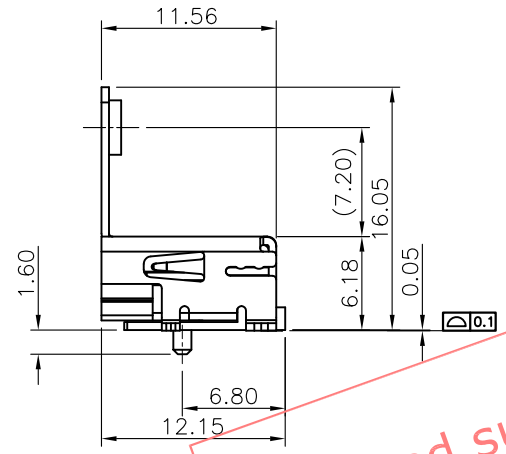
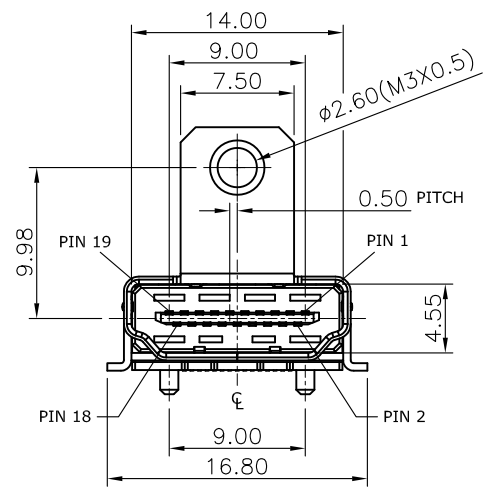


REV.	DESCRIPTION	DRAWN	DATE
1	INITIAL RELEASE	Willis	2012/10/25
2	Change Brass to SPCC	Fros	2016/09/05



**SPECIFICATION:**

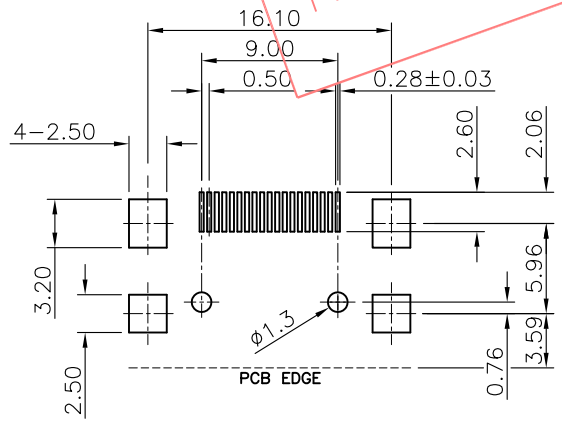
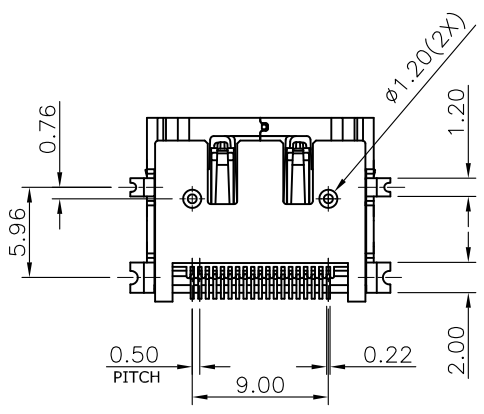
1. Current Rating: 0.5A per pin
2. Contact Resistance: 10mΩ
3. Insulation Resistance: 100 MΩ(unmated)/ 10MΩ(mated)
4. Dielectric Withstanding Voltage: 300VAC
5. Operating temperature range: -55°C~+85°C



PRODUCT NUMBER:  
206B-S A B N  
1 2 3 4

1. Solder Tail Type  
S: SMT type
2. Contact Plating  
A: 15μ" Gold Plating
3. Metal Shell Type  
B: SMT Metal shell
4. Shell Plating  
N: Nickel plated

[ Limited supply by further check with us. ]



**RECOMMENDED LAYOUT (TOP VIEW)**  
**GENERAL TOLERANCE: ±0.05mm**

3	SHELL	SPCC, Nickel plating	
		Brass, Contact area: Gold plating over Nickel	
2	CONTACT	Solder Tail: Tin plating over Nickel	
1	HOUSING	LCP+30%GF, UL94V-0, Black	
NO. PART NAME		DESCRIPTION	
UNLESS OTHERWISE SPECIFIED TOLERANCE			
UNIT:	DECIMAL	LINEAR	ANGLES
	mm	X, X	±0.50 ±3°
		X, XX	±0.12 ±1°
DRAWN		Willis	2012/10/25
CHECKED		Angel	2012/10/25
APPROVED		Ken	2012/10/25
SCALE		1/1	SHEET 1/1
SIZE		A4	FILE NAME
DRAWN NAME:		HDMI Connector with Flange Solder Tail: SMD, Shell: SMD	
PRODUCT NO.		206B-SABN	
FILE NAME		206B-SABN_B_2	



WWW.ATTEND.COM.TW