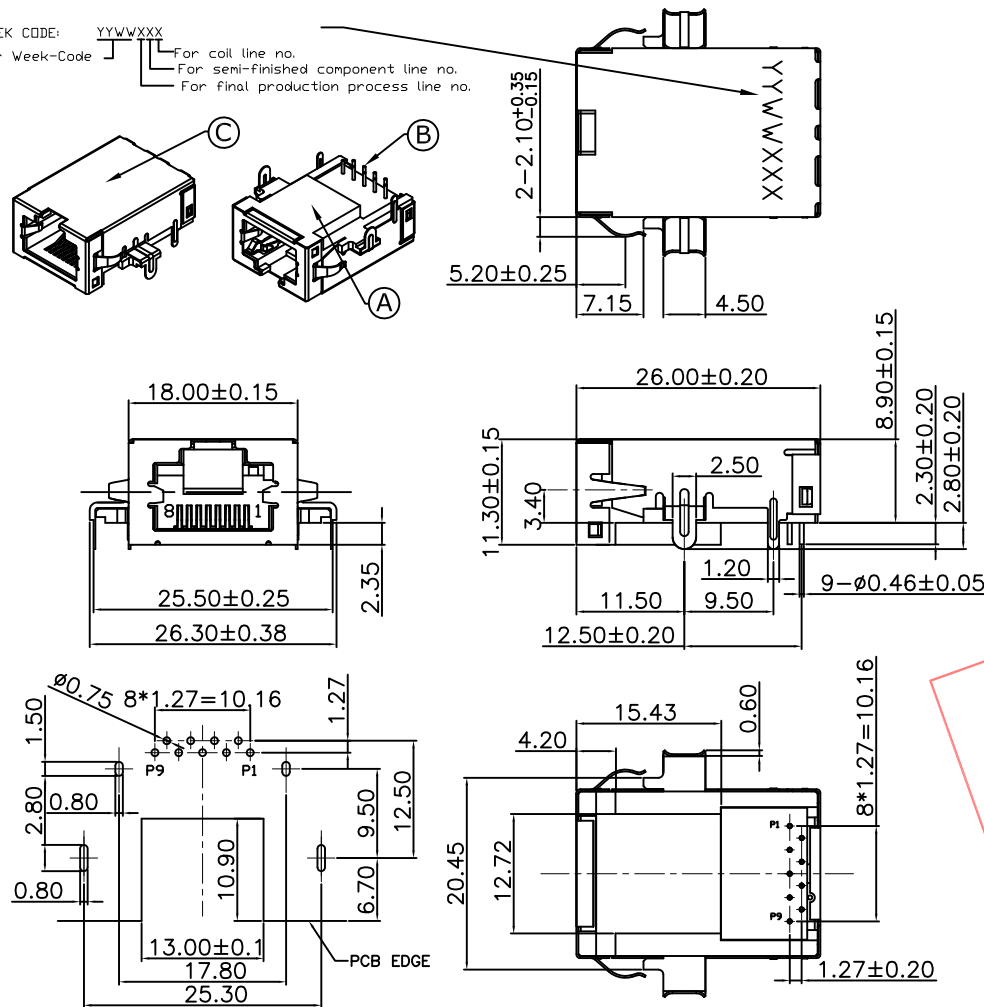


SWITCH CIRCUIT

MATERIAL AND FINISH AS BELOW

A	Housing	LCP UL94V-0 Black	E
B	Contact	Phosphor Bronze C5191,Contact Area:Gold Plating	F
C	Shell	Brass C2680,Nickel Plating	G
D	Coil Box	Phenolic UL94V-0 Black	H

WEEK CODE: YYWWXXX  
 For Week-Code  
 For coil line no.  
 For semi-finished component line no.  
 For final production process line no.



**PRODUCT NUMBER:**  
**212A-11 C C 0-RA7**  
**1 2 3**

**SPECIFICATION:**

**1.No. of Contact**  
**11:1X1 Port**

**2.Contact Plating**  
**C: 5u" Gold Plating**

**3.EMI Tab**  
**C:Middle mount with EMI Tab**

**1. ELECTRICAL**

- 1.1 Current Rating: 350mA per pin**
- 1.2 Voltage Rating: 57V DC per pin**
- 1.3 Contact Resistance: 20mΩ**
- 1.4 Insulation Resistance: 1000MΩ**
- 1.5 Dielectric Withstanding Voltage: 1500VAC/2250VDC**

**2. MECHANICAL**

- 2.1 Durability: 1000 Cycle**
- 2.2 Insertion Force: 35.6N max.**
- 2.3 Extraction Force: 35.6N min.**

**3. ENVIRONMENTAL**

- 3.1 Operating temperature range: -0°C~+70°C**
- 3.2 Storage temperature range: -40°C~+85**

**4. SOLDER ABILITY**

- 4.1 Recommended Wave Soldering Temperature: 260°C**
- 4.2 Recommended PCB Thickness: 1.5mm**

Limited supply by further check with us. ]

P1	P2	P3	P4	P5	P6	P7	P8	P9	P10	P11	P12
----	----	----	----	----	----	----	----	----	-----	-----	-----

PIN ASSIGNMENT

**212A-11CC0-RA7** Middle Mount 2.35mm Magnetic Type, Contact Area:5u" Gold

PRODUCT NO. DESCRIPTION

UNLESS OTHERWISE SPECIFIED TOLERANCE

ANGLES	ANG.	±5°
LINEAR	0.	±0.3
	0.0	±0.25
	0.00	±0.20

SCALE AS SHOWN UNIT: mm

DRAWN Willis 2012/09/27

CHECKED Angel 2012/09/27

APPROVED Ken 2012/09/27



www.attend.com.tw

DRAWN NAME: RJ45 Jack Middle Mount Magnetic Type Gigabit

PRODUCT NO. 212A-11CC0-RA7

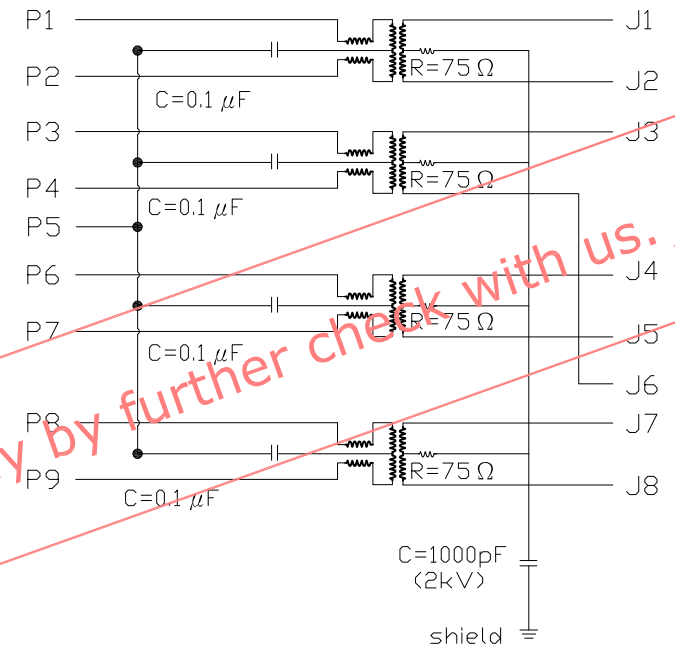
REV.	DESCRIPTION	DATE	REV.	DESCRIPTION	DATE	SIZE	REV.	FILE NAME
1						A4	1.0	212A-11CC0-RA7_B_1

DIELECTRIC: CUT OFF CURRENT 1mA MAXIMUM IN 2250 VDC or 1500 VAC/ 1 MINUTE

	TEST ITEM	FREQUENCY	SPECIFICATION REQUIREMENT (LIMIT)
1	Insertion Loss	0.1~1MHz	1.1 dB
		1~65MHz	0.5 dB
		65~100MHz	0.8 dB
		100~125MHz	1.2 dB
2	Return Loss	0.5~40MHz	18 dB
		40~100MHz	$12-20 * \text{LOG}_{10}(\text{MHz}/80)$ dB
3	CMRR	2~100MHz	$39-19.2 * \text{LOG}_{10}(\text{MHz}/50)$ dB
4	Common to Common Rejection	0.1~100MHz	30 dB
5	Cross-Talk Isolation	1~100MHz	$30-20 * \text{LOG}_{10}(\text{MHz}/100)$ dB

Chip Side

Cable Side



Limited supply by further check with us.

UNLESS OTHERWISE SPECIFIED TOLERANCE

ANGLES	ANG.	±5°
LINEAR	0.	±0.3
	0.0	±0.25
	0.00	±0.20

SCALE AS SHOWN UNIT: mm

DRAWN Willis 2012/09/27

CHECKED Angel 2012/09/27

APPROVED Ken 2012/09/27



www.attend.com.tw

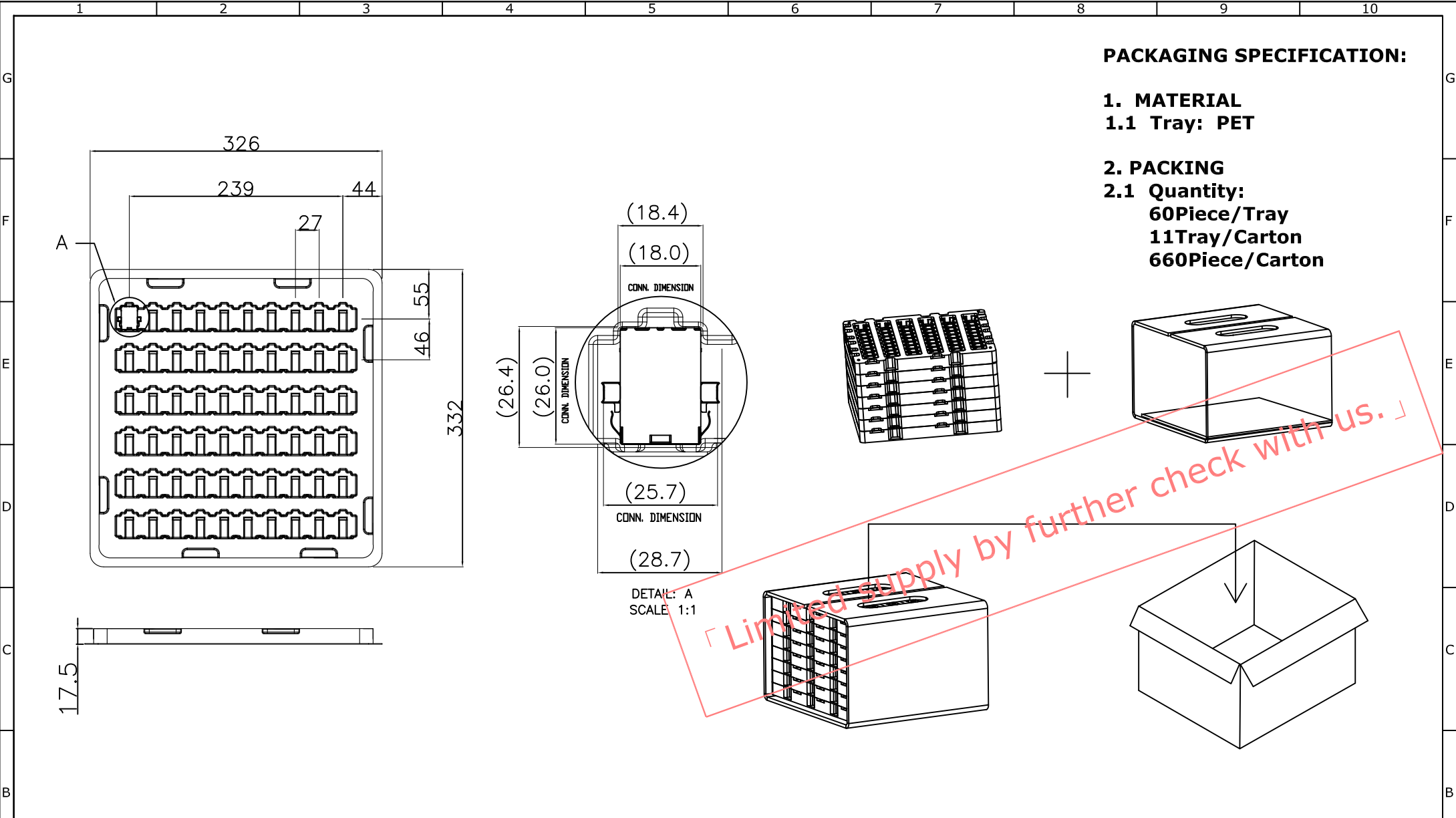
DRAWN NAME: RJ45 Jack Middle Mount Magnetic Type Gigabit

PRODUCT NO. 212A-11CC0-RA7

FILE NAME 212A-11CC0-RA7\_B\_1

REV.	DESCRIPTION	DATE	REV.	DESCRIPTION	DATE
1					
2					
3					
4					

SIZE A4 REV. 1.0



**PACKAGING SPECIFICATION:**

**1. MATERIAL**

**1.1 Tray: PET**

**2. PACKING**

**2.1 Quantity:**  
**60Piece/Tray**  
**11Tray/Carton**  
**660Piece/Carton**

「 Limited supply by further check with us. 」

						UNLESS OTHERWISE SPECIFIED TOLERANCE			 www.attend.com.tw	
						ANGLES	ANG.	±5°		
						LINEAR		0.	±0.3	
								0.0	±0.25	
						0.00	±0.20			
						SCALE	AS SHOWN	UNIT: mm		
						DRAWN	Willis	2012/09/27	DRAWN NAME:	
						CHECKED	Angel	2012/09/27	RJ45 Jack Middle Mount Magnetic Type Gigabit	
						APPROVED	Ken	2012/09/27	PRODUCT NO.	212A-11CC0-RA7
REV.	DESCRIPTION			DATE	REV.	DESCRIPTION			DATE	FILE NAME
1					4					212A-11CC0-RA7_D_1