

SWITCH CIRCUIT

MATERIAL AND FINISH AS BELOW

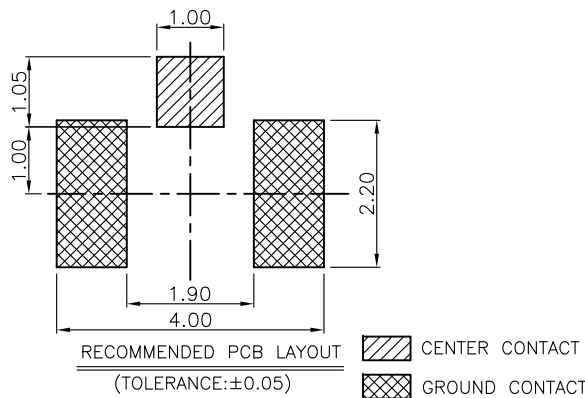
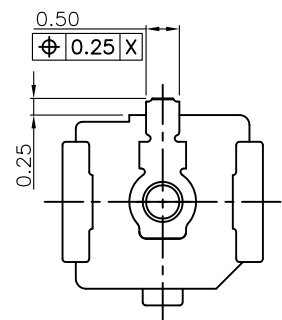
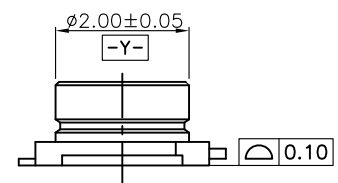
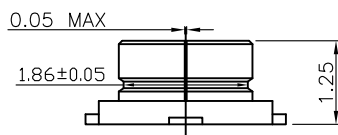
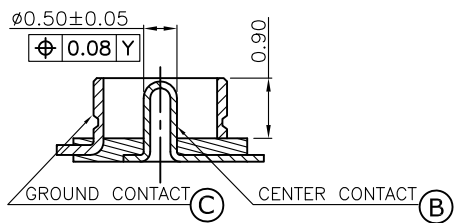
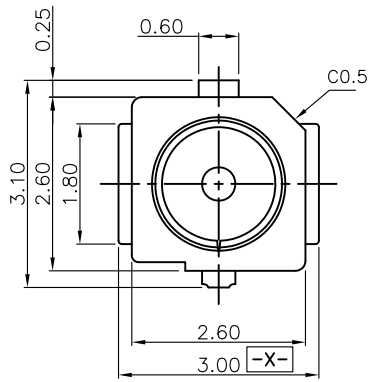
WHEN CARD IS EJECTED

WHEN CARD IS INSERTED

A	Housing	LCP UL94V-0, Color: Ivory	E
B	Contact	Brass C2680, Gold Flash	F
C	Ground	Phosphor Bronze, Gold Flash	G
D			H

SPECIFICATION:

- 1. ELECTRICAL**
 - 1.1 Current Rating: 1A**
 - 1.2 Voltage Rating: 60VAC**
 - 1.3 Contact Resistance:**
 - Inner Contact | Initially: 20mΩ
 - Ground Contact | Initially: 10mΩ
 - 1.4 Insulation Resistance: 500MΩ**
 - 1.5 Dielectric Withstanding Voltage: 200VAC for 1 minute**
 - 1.6 VSWR: 100MHz to 3GHz | 1.3Max**
3GHz to 6GHz | 1.4Max
 - 1.7 Nominal Characteristic Impedance : 50Ω**
 - 1.8 Applicable Frequency: 100MHz to 6GHz**
- 2. MECHANICAL**
 - 2.1 Durability: 30 Cycle**
- 3. ENVIRONMENTAL**
 - 3.1 Operating temperature range: -40°C to +85°C**
 - 3.2 Storage temperature range: -40°C to +85°C**
- 4. SOLDER ABILITY**
 - 4.1 Recommended IR Reflow Temperature: 260°C**




--	--	--	--	--	--	--	--	--	--	--

PIN ASSIGNMENT

MRF1	MRF1 , Contact Area:Gold Flash

PRODUCT NO. DESCRIPTION

UNLESS OTHERWISE SPECIFIED TOLERANCE			
ANGLES	ANG.	±5°	
LINEAR	0.	±0.3	
	0.0	±0.25	
	0.00	±0.20	
SCALE	AS SHOWN	UNIT: mm	www.attend.com.tw
DRAWN	Willis	2014/07/17	DRAWN NAME:
CHECKED	Angel	2014/07/17	Micro Coaxial RF Connector 1.25mm Hight
APPROVED	Ken	2014/07/17	PRODUCT NO. 321A-33125
REV.	1.0	FILE NAME	321A-33125_B_1

REV.	DESCRIPTION	DATE	REV.	DESCRIPTION	DATE
1			4		
2			5		
3			6		

Revise:

Revise:

Revise: