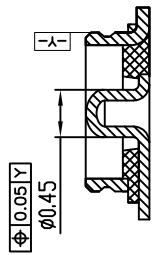
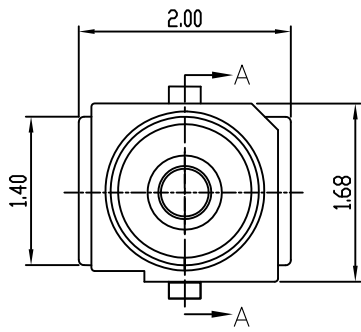
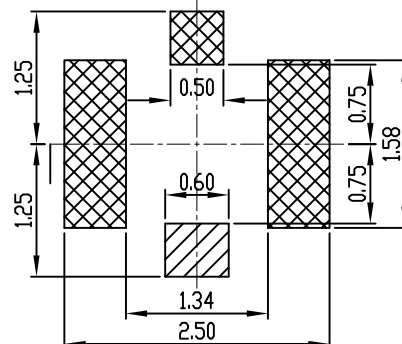
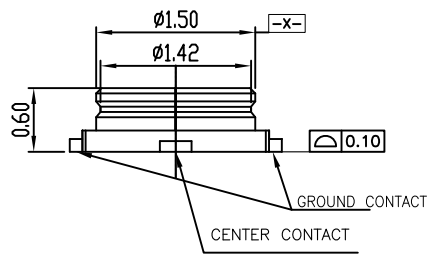


1	2	3	4	5	6	7	8	9	10
SWITCH CIRCUIT			MATERIAL AND FINISH AS BELOW						
WHEN CARD IS EJECTED		WHEN CARD IS INSERTED		A	Housing	LCP UL94V-0, Color: Black	E		
				B	Contact	Brass C2680, Gold Flash	F		
				C	Ground	Phosphor Bronze, Gold Flash	G		
				D			H		

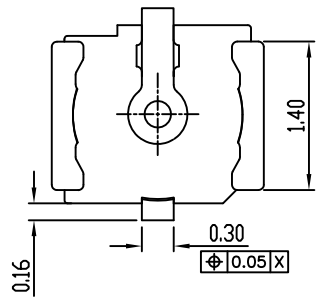


SECTION A-A



RECOMMENDED PCB LAYOUT
(TOLERANCE: ±0.05)

- CENTER CONTACT
- GROUND CONTACT



SPECIFICATION:

1. ELECTRICAL

- 1.1 Current Rating: 1A**
- 1.2 Voltage Rating: 60VAC**
- 1.3 Contact Resistance:**
 - Inner Contact | **Initially: 20mΩ**
 - Ground Contact | **Initially: 20mΩ**
- 1.4 Insulation Resistance: 500MΩ**
- 1.5 Dielectric Withstanding Voltage: 200VAC for 1 minute**
- 1.6 VSWR: 100MHz to 3GHz | 1.3Max**
3GHz to 6GHz | 1.45Max
6GHz to 12GHz | 2.0Max
- 1.7 Nominal Characteristic Impedance : 50Ω**
- 1.8 Applicable Frequency: 100MHz to 12GHz**

2. MECHANICAL

- 2.1 Durability: 30 Cycle**

3. ENVIRONMENTAL

- 3.1 Operating temperature range: -40°C to +85°C**
- 3.2 Storage temperature range: -40°C to +85°C**

4. SOLDER ABILITY

- 4.1 Recommended IR Reflow Temperature: 260°C**

--	--	--	--	--	--	--	--	--	--	--	--	--	--	--

PIN ASSIGNMENT

MRF4														
MRF1 , Contact Area:Gold Flash														

PRODUCT NO.	DESCRIPTION												
-------------	-------------	--	--	--	--	--	--	--	--	--	--	--	--

UNLESS OTHERWISE SPECIFIED TOLERANCE		
ANGLES	ANG.	±5°
LINEAR	0.	±0.3
	0.0	±0.25
	0.00	±0.20
SCALE	AS SHOWN	UNIT: mm
DRAWN	Willis	2014/07/17
CHECKED	Angel	2014/07/17
APPROVED	Ken	2014/07/17



www.attend.com.tw

DRAWN NAME: Micro Coaxial RF Connector 0.6mm Height

PRODUCT NO. 321C-22060

3	Revise:													
2	Revise:													
1	Revise:													
REV.	DESCRIPTION	DATE	REV.	DESCRIPTION	DATE	SIZE	A4	REV.	1.0	FILE NAME	321C-22060_B_1			