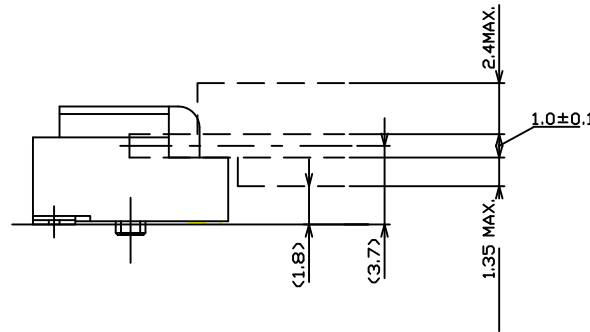
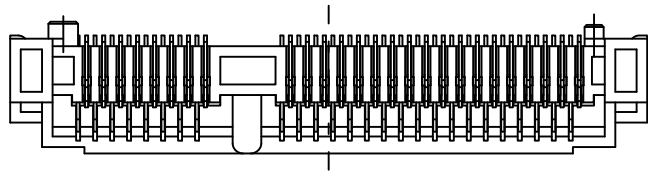
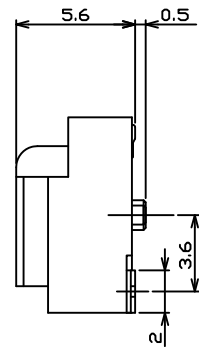
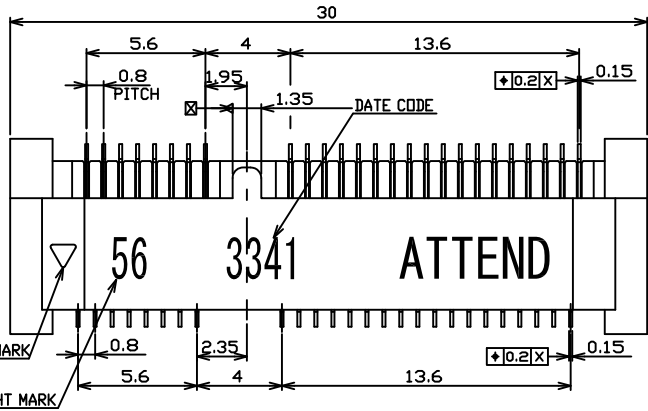


1	2	3	4	5	6	7	8	9	10
SWITCH CIRCUIT			MATERIAL AND FINISH AS BELOW						
WHEN CARD IS EJECTED		WHEN CARD IS INSERTED		A	Housing	LCP UL94V-0, Black	E		
				B	Contact	Phosphor Bronze C5210, Contact Area:Gold Flash Over Nickel	F		
				C	Holddown	Brass C2680, Tin Plated	G		
				D			H		

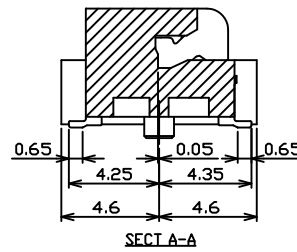
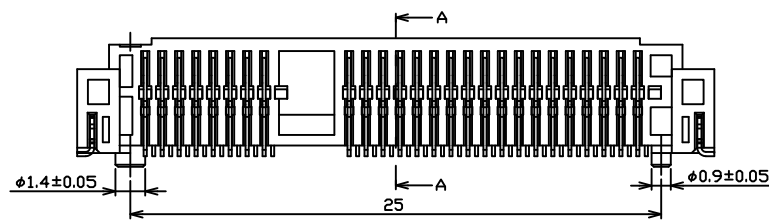


**SPECIFICATION:**

- 1. ELECTRICAL**
  - 1.1 Current Rating: 0.5A per pin
  - 1.2 Voltage Rating: 50V DC
  - 1.3 Contact Resistance: 55mΩ Max
  - 1.4 Insulation Resistance: 500MΩ Min
  - 1.5 Dielectric Withstanding Voltage: 300VAC
- 2. MECHANICAL**
  - 2.1 Durability: 100 Cycle
  - 2.2 Insertion Force: 2.3Kgf max.
  - 2.3 Extraction Force: 2.3Kgf max.
- 3. ENVIRONMENTAL**
  - 3.1 Operating temperature range: -40°C~+85°C
  - 3.2 Storage temperature range: -40°C~+85°C
- 4. SOLDER ABILITY**
  - 4.1 Recommended IR Reflow Temperature: 260°C 10Sec



DATE CODE: 3341 (YWWDD)  
 Y: 0 YEAR (2010)  
 WW: 16 WEEK (01~52)  
 D: 3 DAY (01~07)



P1	P2	P3	P4	P5	P6	P7	P8	P9	P10	P11	P12
----	----	----	----	----	----	----	----	----	-----	-----	-----

PIN ASSIGNMENT											
119A-56A00-R04 Mini PCI Express Socket, Pitch:0.80mm H:5.6mm, Contact Area:Gold Flash											

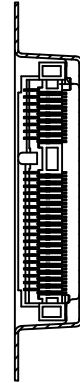
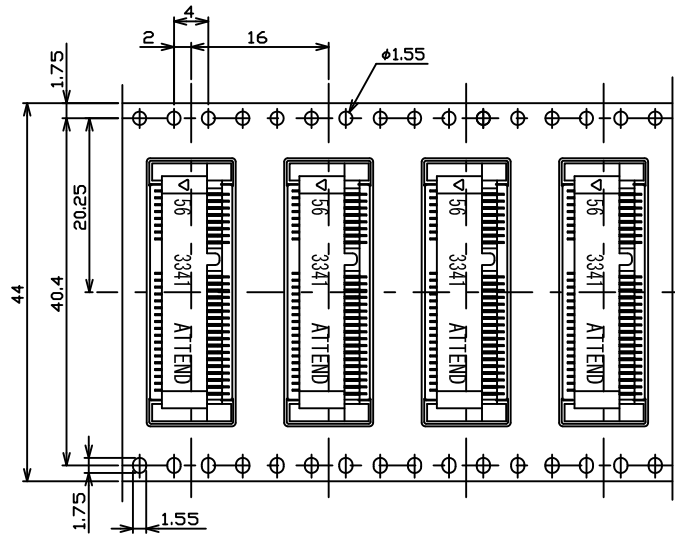
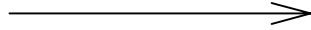
PRODUCT NO.		DESCRIPTION																			
UNLESS OTHERWISE SPECIFIED TOLERANCE		<table border="1"> <tr> <td>ANGLES</td> <td>ANG.</td> <td>±5°</td> </tr> <tr> <td rowspan="3">LINEAR</td> <td>0.</td> <td>±0.3</td> </tr> <tr> <td>0.0</td> <td>±0.25</td> </tr> <tr> <td>0.00</td> <td>±0.20</td> </tr> </table>										ANGLES	ANG.	±5°	LINEAR	0.	±0.3	0.0	±0.25	0.00	±0.20
ANGLES	ANG.	±5°																			
LINEAR	0.	±0.3																			
	0.0	±0.25																			
	0.00	±0.20																			
SCALE	AS SHOWN	UNIT:	mm																		
DRAWN	Willis	2014/01/08		DRAWN NAME: Mini PCI Express Socket H:5.6mm																	
CHECKED	Angel	2014/01/08		PRODUCT NO. 119A-56A00-R04																	
APPROVED	Ken	2014/01/08		REV. 1.0 FILE NAME 119A-56A00-R04_B_1																	



REV.	DESCRIPTION	DATE	REV.	DESCRIPTION	DATE	SIZE	REV.	FILE NAME
1			4			A4	1.0	119A-56A00-R04_B_1

3	Revise:							
2	Revise:							
1	Revise:							

DIRECTION OFF TOP OF REEL

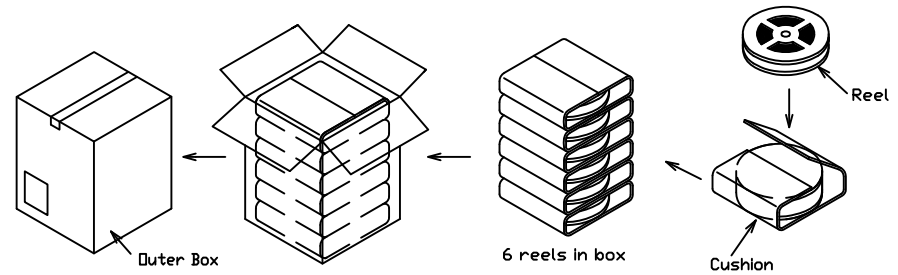
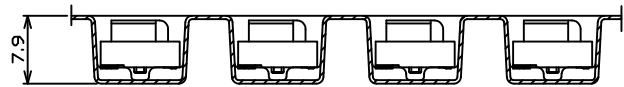
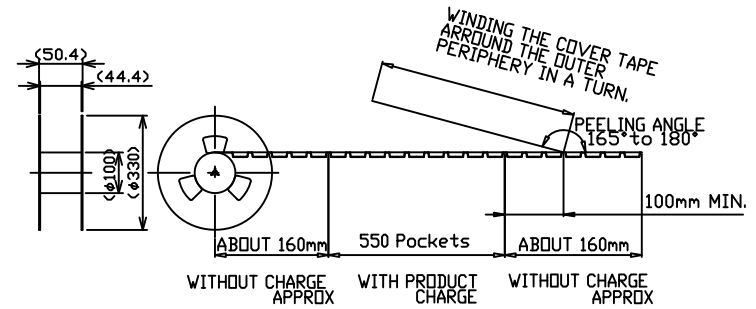


NOTE:

1. PEELING RESISTANCE: 0.1N~0.13N (10gf~130gf)  
 PEELING ANGLE: 165°~180°  
 PEELING SPEED: 300mm/min

2. PACKING STYLE

- 550PCS/REEL
- 6REEL/CARTON



BOX PACKING

UNLESS OTHERWISE SPECIFIED TOLERANCE		
ANGLES	ANG.	±5°
LINEAR	0.	±0.3
	0.0	±0.25
	0.00	±0.20
SCALE	AS SHOWN	UNIT: mm
DRAWN	Willis	2014/01/08
CHECKED	Angel	2014/01/08
APPROVED	Ken	2014/01/08



www.attend.com.tw

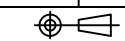
DRAWN NAME: Mini PCI Express Socket H:5.6mm

PRODUCT NO. 119A-56A00-R04

FILE NAME 119A-56A00-R04\_D\_1

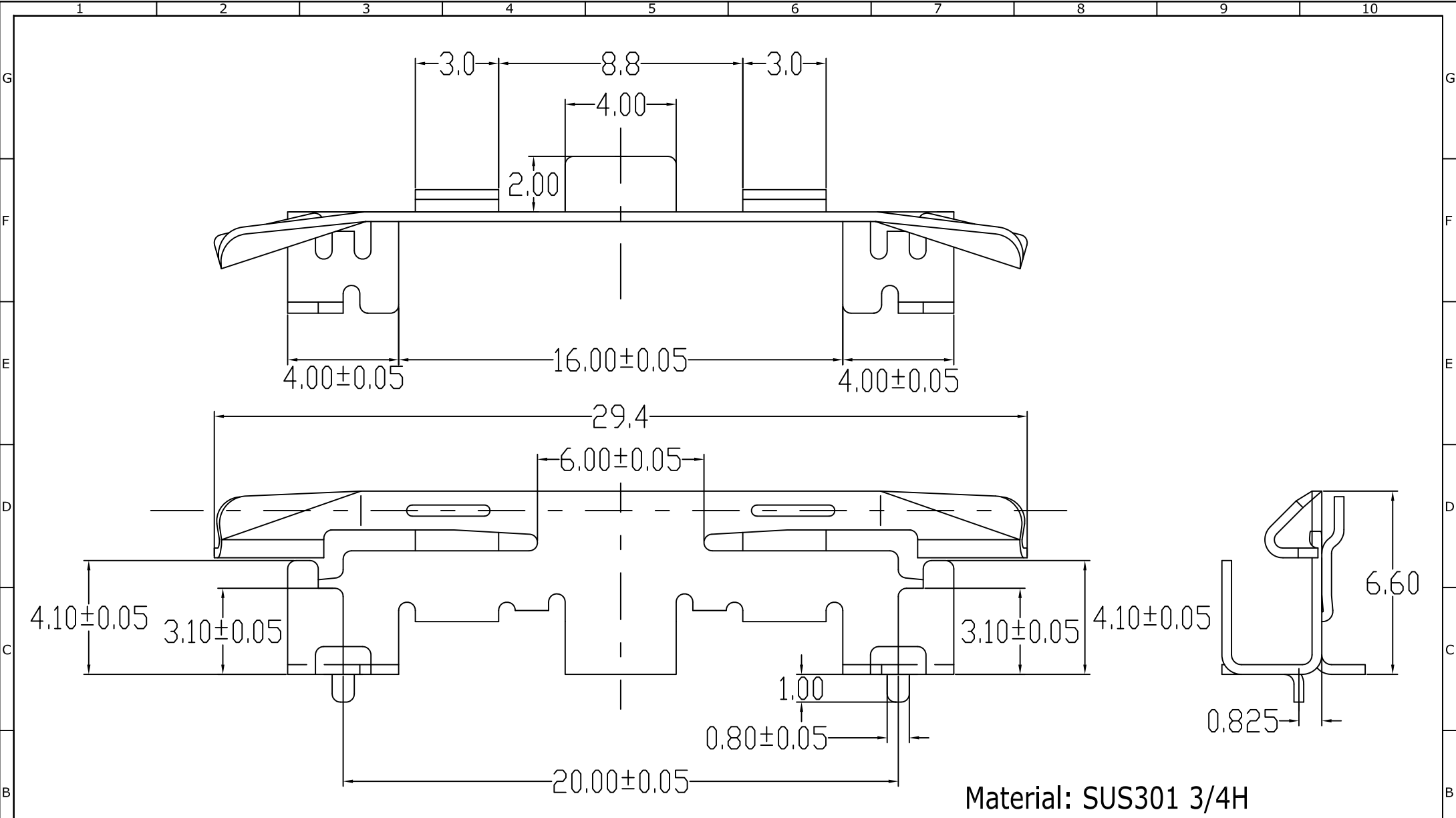
REV.	DESCRIPTION	DATE	REV.	DESCRIPTION	DATE
1			2		
3			4		
5			6		
7			8		
9			10		

3	Revise:				
3	Revise:				
3	Revise:				



SIZE A4

REV. 1.0



Material: SUS301 3/4H

UNLESS OTHERWISE SPECIFIED TOLERANCE		
ANGLES	ANG.	±5°
LINEAR	0.	±0.3
	0.0	±0.25
	0.00	±0.20
SCALE	AS SHOWN	UNIT: mm
DRAWN	Willis	2014/04/23
CHECKED	Angel	2014/04/23
APPROVED	Ken	2014/04/23

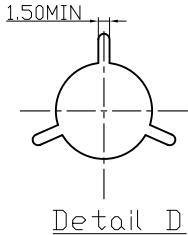
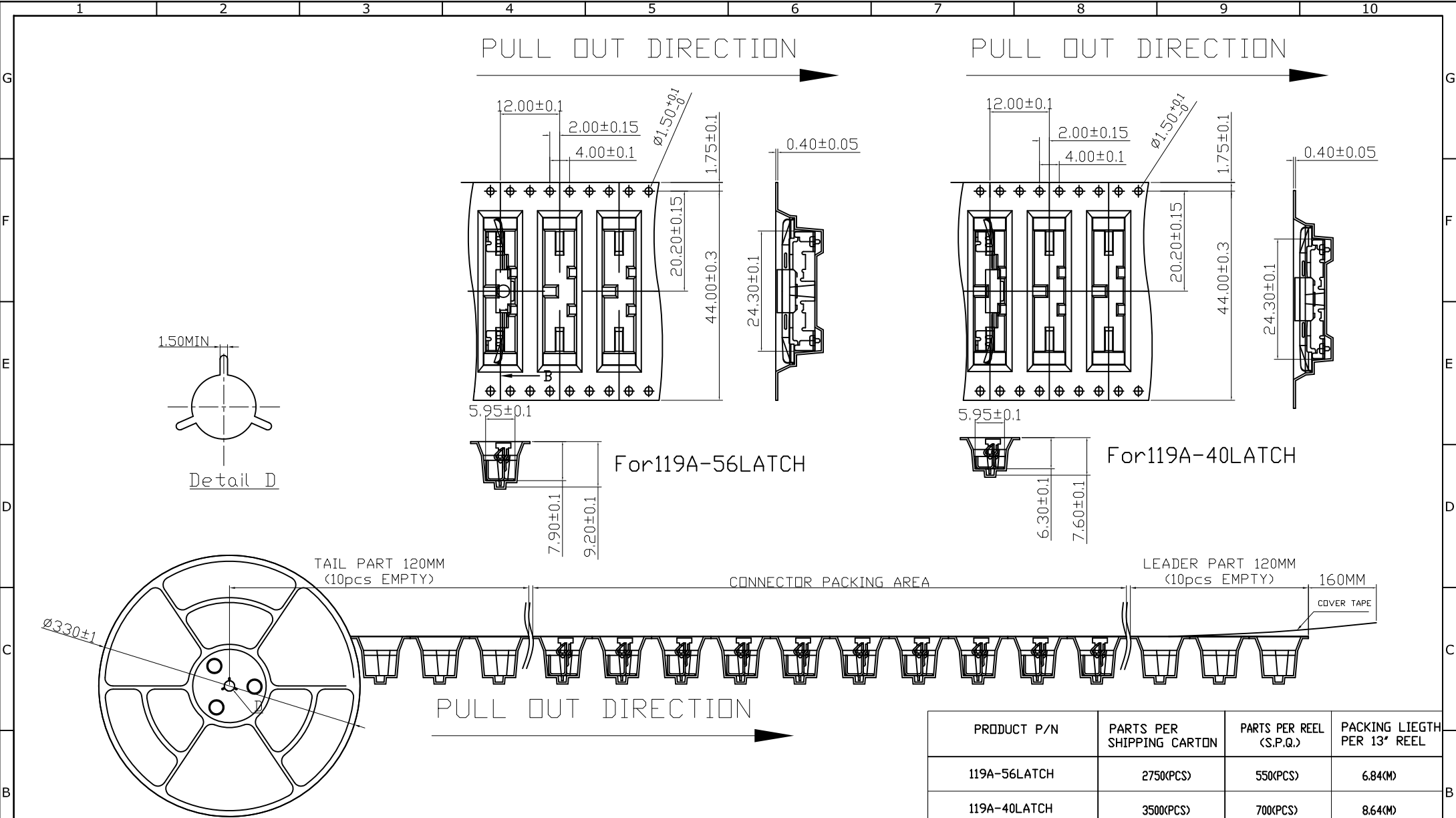


www.attend.com.tw

REV.	DESCRIPTION	DATE	REV.	DESCRIPTION	DATE
1			2		
3			4		

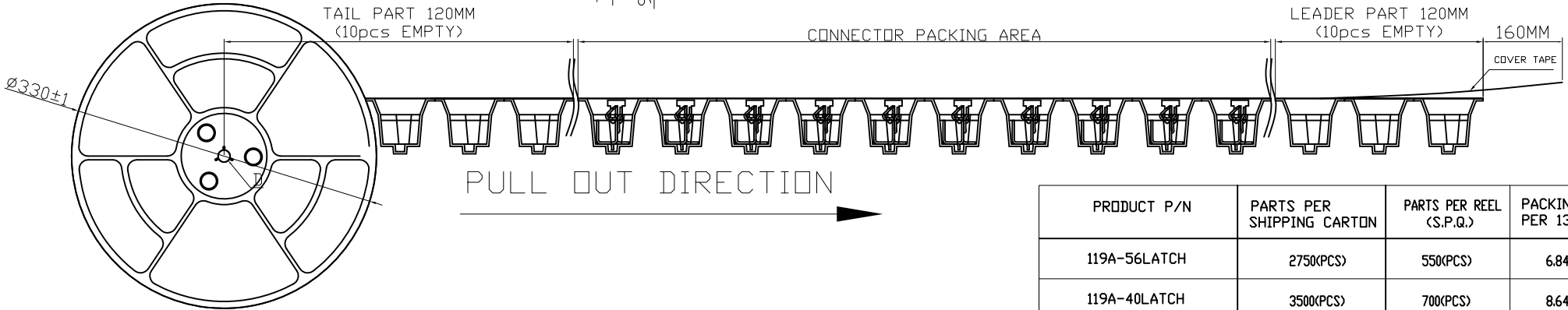
DRAWN NAME: Mini PCI Express Latch 5.6H	
PRODUCT NO.	119A-56LATCH
FILE NAME	119A-56LATCH_B_1

SIZE A4 REV. 1.0



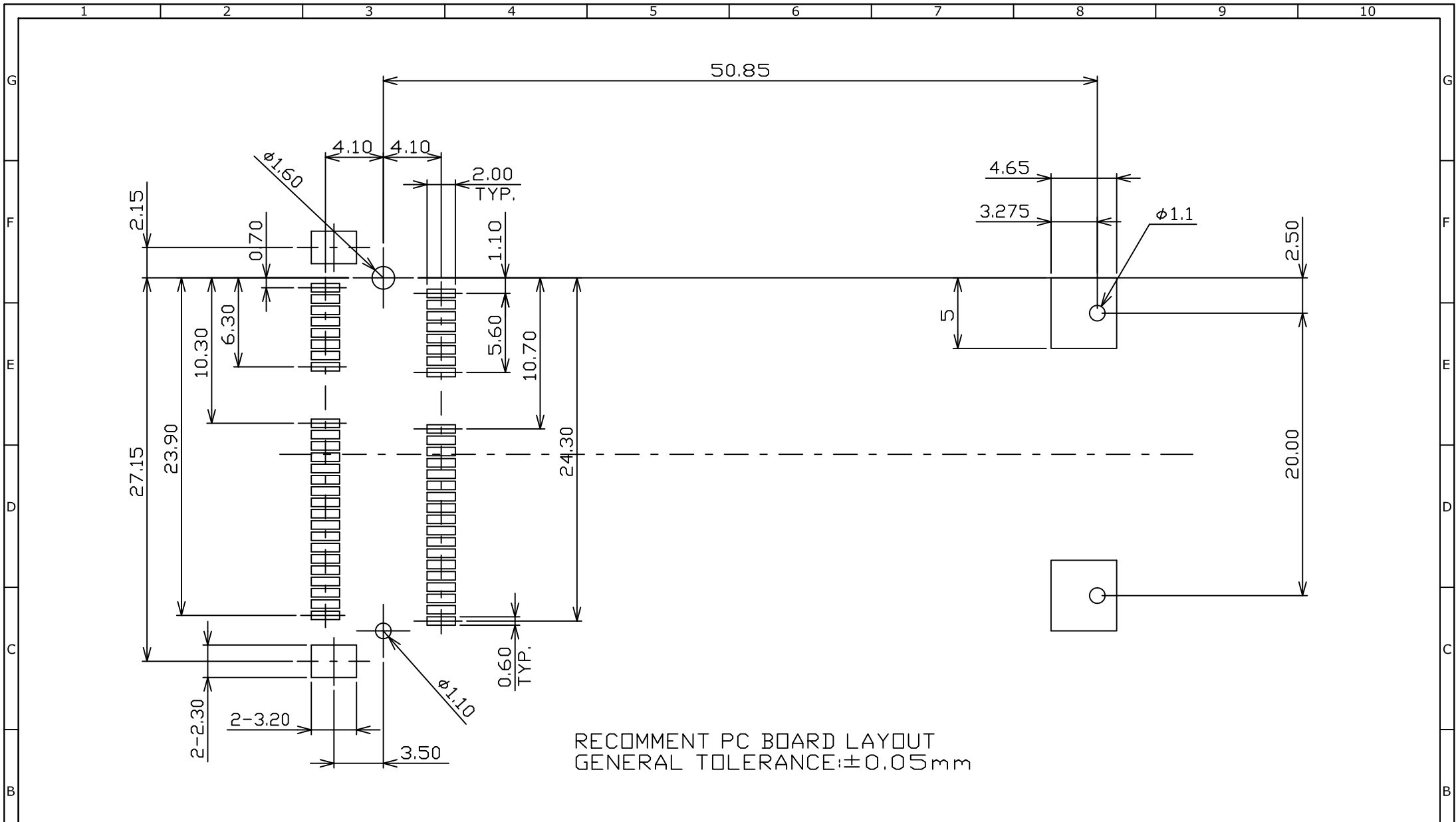
For 119A-56LATCH

For 119A-40LATCH




PRODUCT P/N	PARTS PER SHIPPING CARTON	PARTS PER REEL (S.P.Q.)	PACKING LIEGTH PER 13' REEL
119A-56LATCH	2750(PCS)	550(PCS)	6.84(M)
119A-40LATCH	3500(PCS)	700(PCS)	8.64(M)

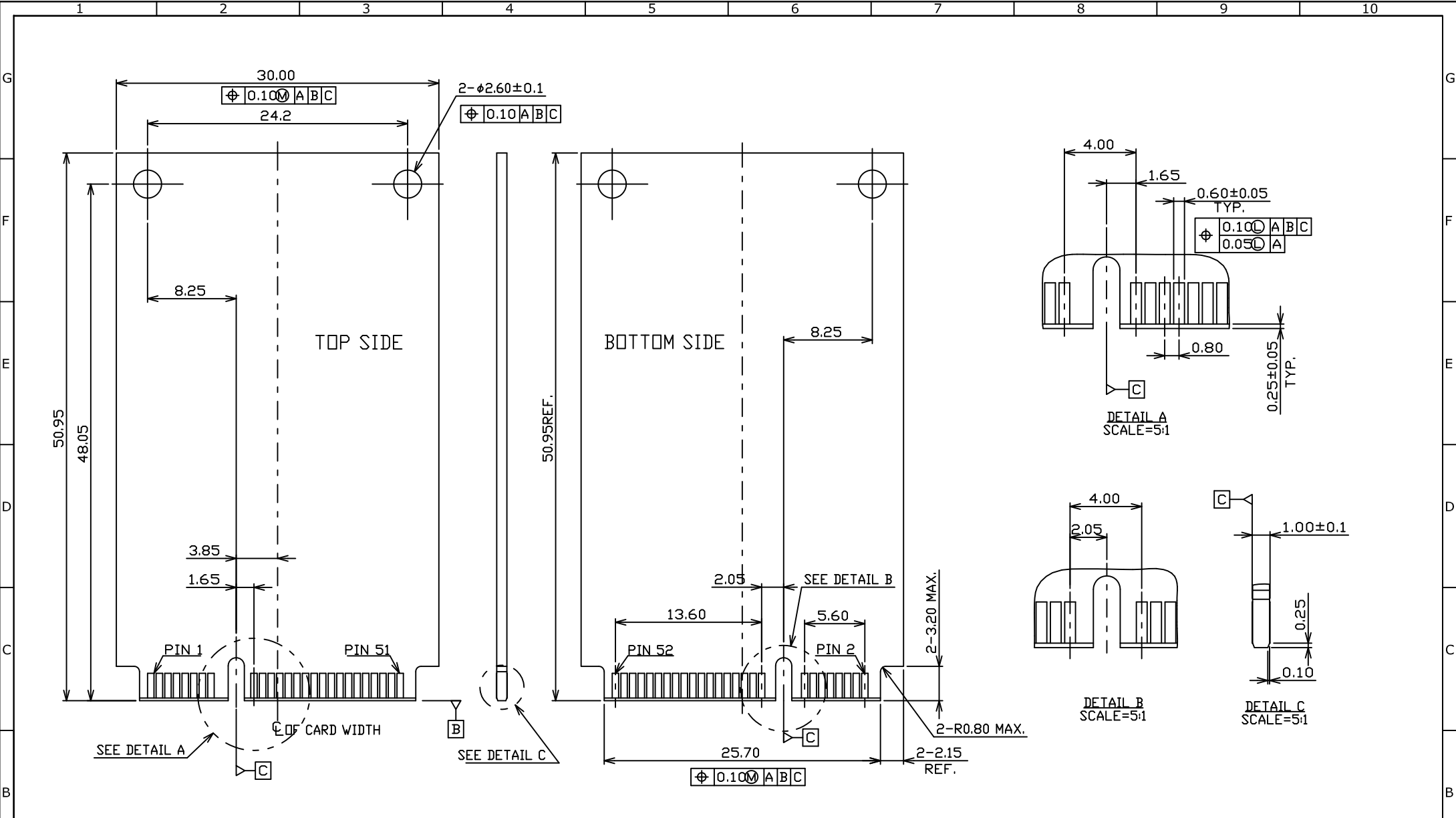
						UNLESS OTHERWISE SPECIFIED TOLERANCE		 www.attend.com.tw	
ANGLES		ANG.		±5°					
LINEAR		0.		±0.3					
		0.0		±0.25					
		0.00		±0.20					
SCALE		AS SHOWN		UNIT: mm					
DRAWN		Willis		2014/04/23		DRAWN NAME:			
CHECKED		Angel		2014/04/23		Mini PCI Express Latch Packing			
APPROVED		Ken		2014/04/23		PRODUCT NO. 119A-XXLATCH			
REV.	DESCRIPTION	DATE	REV.	DESCRIPTION	DATE	SIZE A4	REV. 1.0	FILE NAME 119A-XXLATCH_D_1	



RECOMMEND PC BOARD LAYOUT  
GENERAL TOLERANCE: ±0.05mm

REV.	DESCRIPTION	DATE	REV.	DESCRIPTION	DATE	UNLESS OTHERWISE SPECIFIED TOLERANCE			ATTEND	
						ANGLES	ANG.	±5°	 <a href="http://www.attend.com.tw">www.attend.com.tw</a>	
					LINEAR	0.	±0.3			
						0.00	±0.20			
					SCALE	AS SHOWN	UNIT:	mm	DRAWN NAME:	
					DRAWN	Willis	2014/01/08	Mini PCI Express Socket H:5.6mm		
					CHECKED	Angel	2014/01/08	PRODUCT NO.	119A-56A00-R04	
					APPROVED	Ken	2014/01/08	FILE NAME	119A-56A00-R04_B_1	
						SIZE	A4	REV.	1.0	

REV.	DESCRIPTION	DATE	REV.	DESCRIPTION	DATE
3	Revise:				
2	Revise:				
1	Revise:				



REV.	DESCRIPTION	DATE	REV.	DESCRIPTION	DATE	UNLESS OTHERWISE SPECIFIED TOLERANCE	SCALE	UNIT	FILE NAME
1			2			ANGLES	AS SHOWN	mm	119A-56A00-R04_B_1
						ANGLES			
						ANG.			
						ANG.			
						±5°			
						±0.3			
						±0.25			
						±0.20			
						LINEAR			
						0.0			
						0.00			
						SCALE			
						AS SHOWN			
						UNIT			
						mm			
						DRAWN			
						Willis			
						2014/01/08			
						CHECKED			
						Angel			
						2014/01/08			
						APPROVED			
						Ken			
						2014/01/08			
						DRAWN NAME:			
						Mini PCI Express Socket H:5.6mm			
						PRODUCT NO.			
						119A-56A00-R04			
						FILE NAME			
						119A-56A00-R04_B_1			
						SIZE			
						A4			
						REV.			
						1.0			

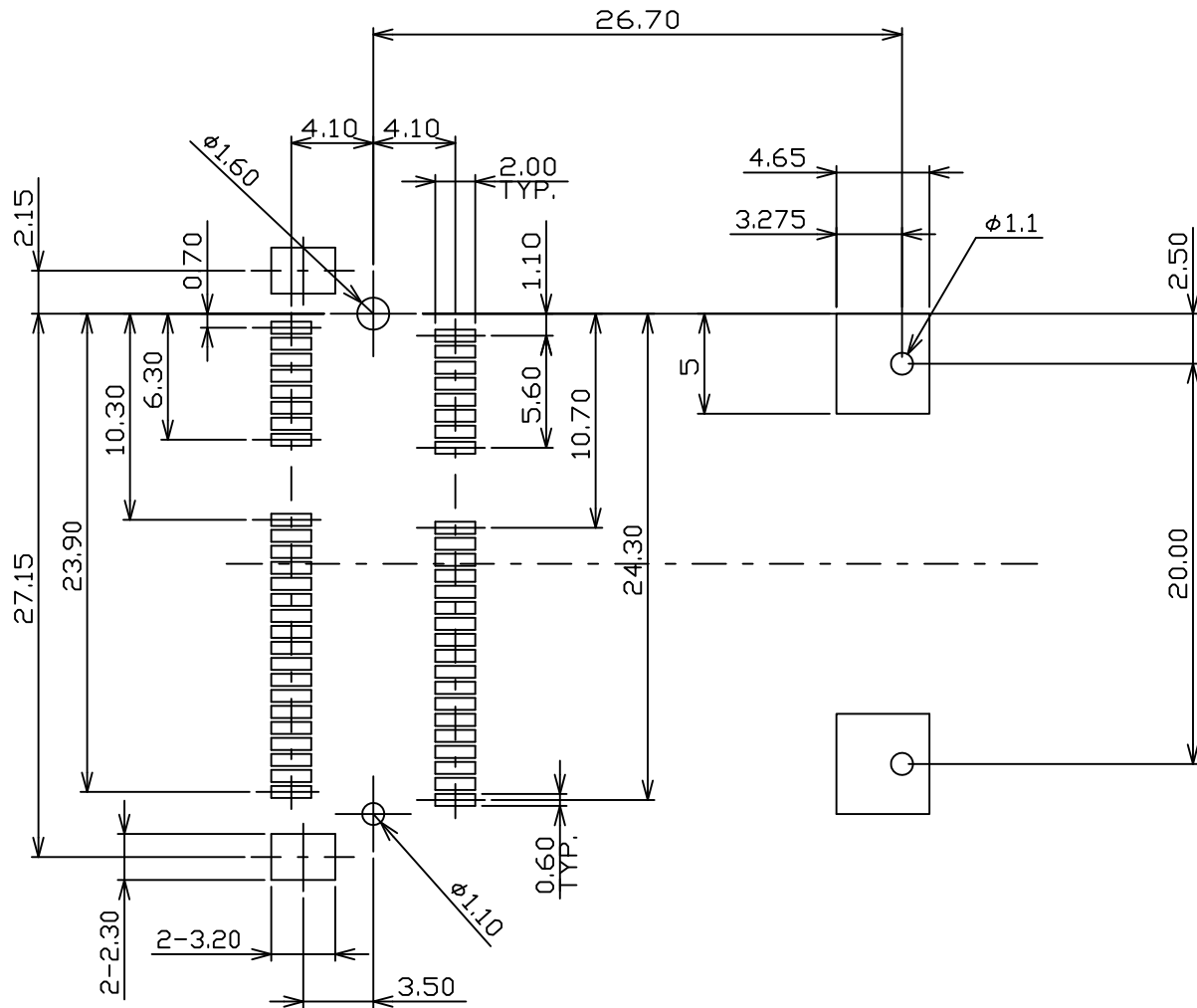


www.attend.com.tw

DRAWN NAME: Mini PCI Express Socket H:5.6mm

PRODUCT NO. 119A-56A00-R04

FILE NAME 119A-56A00-R04\_B\_1



RECOMMEND PC BOARD LAYOUT  
GENERAL TOLERANCE:  $\pm 0.05\text{mm}$

UNLESS OTHERWISE SPECIFIED TOLERANCE		
ANGLES	ANG.	$\pm 5^\circ$
LINEAR	0.	$\pm 0.3$
	0.0	$\pm 0.25$
	0.00	$\pm 0.20$
SCALE	AS SHOWN	UNIT: mm
DRAWN	Willis	2014/01/08
CHECKED	Angel	2014/01/08
APPROVED	Ken	2014/01/08



[www.attend.com.tw](http://www.attend.com.tw)

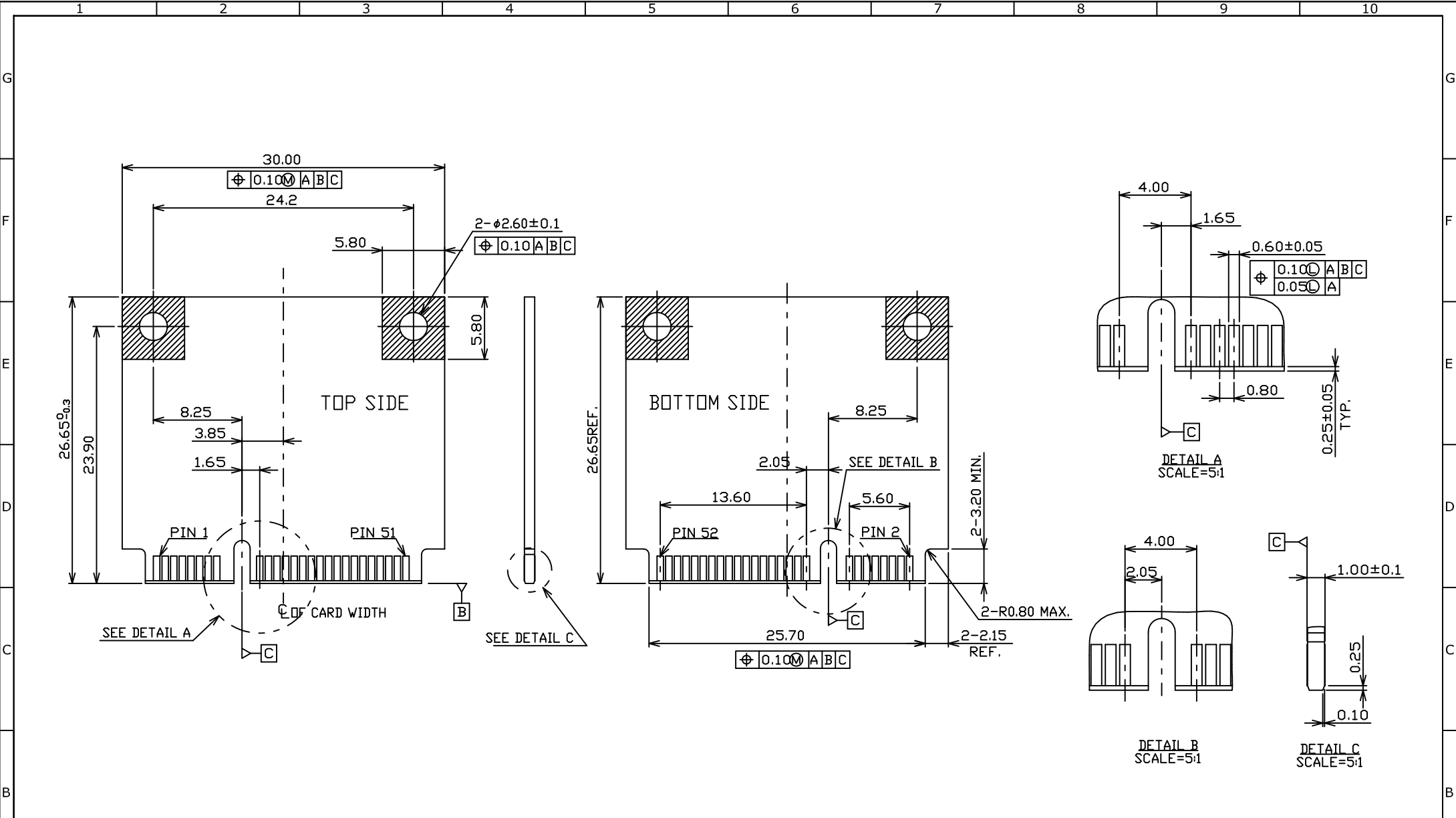
DRAWN NAME:  
Mini PCI Express Socket H:5.6mm

PRODUCT NO. 119A-56A00-R04

FILE NAME 119A-56A00-R04\_B\_1

- △ Revise:
- △ Revise:
- △ Revise:

REV.	DESCRIPTION	DATE	REV.	DESCRIPTION	DATE	SIZE	REV.	FILE NAME
1						A4	1.0	119A-56A00-R04_B_1



REV.	DESCRIPTION	DATE	REV.	DESCRIPTION	DATE	SIZE	REV.	FILE NAME
1			2			A4	1.0	119A-56A00-R04_B_1
3			4					
5			6					
7			8					
9			10					

UNLESS OTHERWISE SPECIFIED TOLERANCE			 <a href="http://www.attend.com.tw">www.attend.com.tw</a>
ANGLES	ANG.	$\pm 5^\circ$	
LINEAR	0.	$\pm 0.3$	
	0.00	$\pm 0.20$	
SCALE	AS SHOWN	UNIT: mm	
DRAWN	Willis	2014/01/08	DRAWN NAME:
CHECKED	Angel	2014/01/08	Mini PCI Express Socket H:5.6mm
APPROVED	Ken	2014/01/08	PRODUCT NO.
			119A-56A00-R04

Revise: 3

Revise: 2

Revise: 1