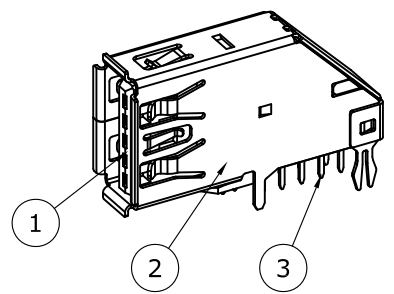
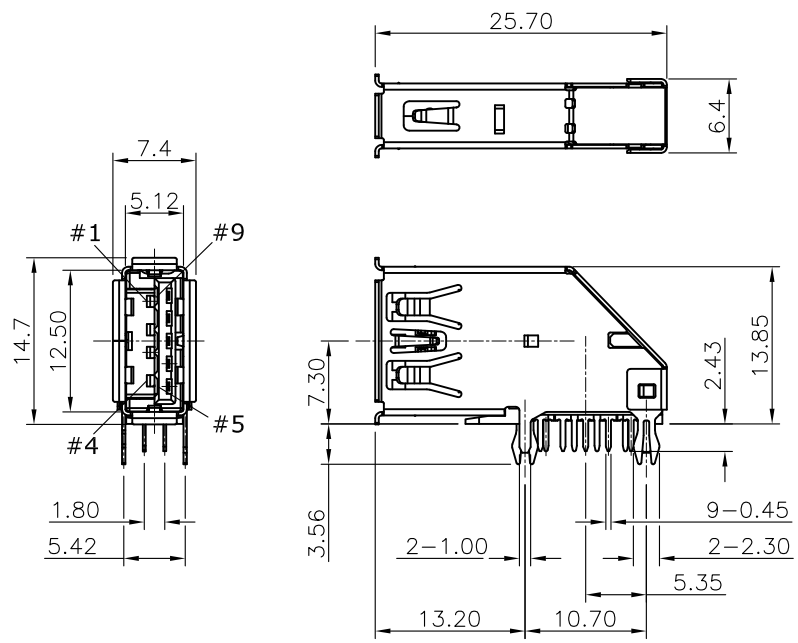


REV.	DESCRIPTION	DRAWN	DATE
1	INITIAL RELEASE	FROS	2017/01/17



PIN ASSIGNMENT	
PIN	SIGNAL NAME
1	VBUS
2	D-
3	D+
4	GND
5	StdA_SSRX-
6	StdA_SSRX+
7	GND_DRAIN
8	StdA_SSTX-
9	StdA_SSTX+
SHELL	SHIELD

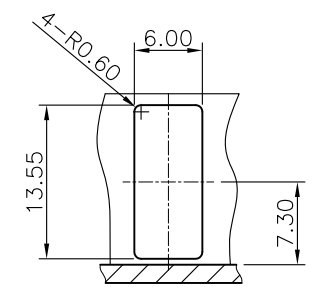
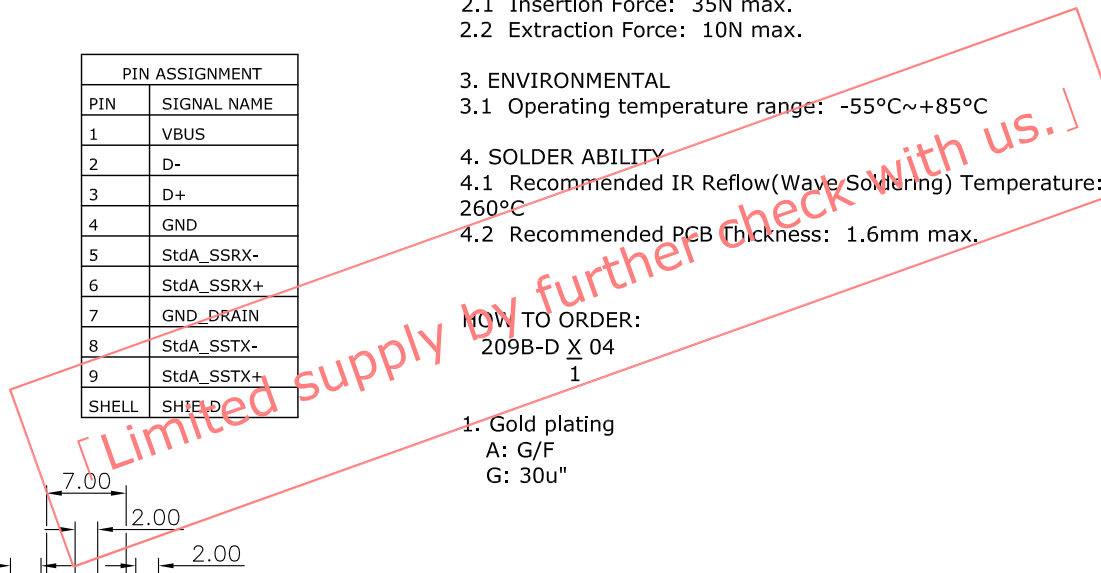
SPECIFICATION:

- ELECTRICAL**
 - Current Rating: 1.8A for Vconn & GND; 0.25A for other pin
 - Contact Resistance: 30mΩ for Vconn & GND; 50mΩ for other pin
 - Insulation Resistance: 100MΩ
 - Dielectric Withstanding Voltage: 100V
- MECHANICAL**
 - Insertion Force: 35N max.
 - Extraction Force: 10N max.

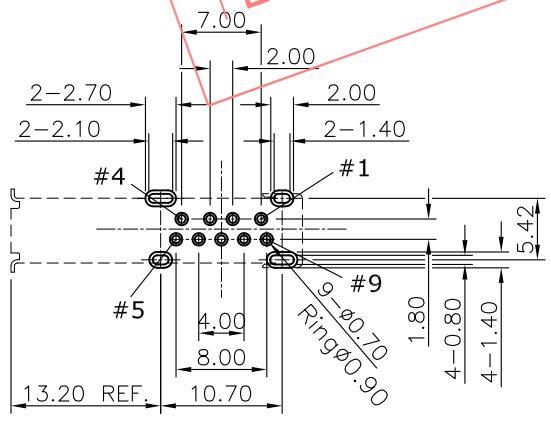
- ENVIRONMENTAL**
 - Operating temperature range: -55°C~+85°C
- SOLDER ABILITY**
 - Recommended IR Reflow(Wave Soldering) Temperature: 260°C
 - Recommended PCB Thickness: 1.6mm max.

HOW TO ORDER:
209B-D X 04
1

- Gold plating
A: G/F
G: 30u"



Panel Cutout (Internal Side)



Recommended Layout (Top View)
General Tolerance: ±0.05mm

3	SHELL	SUS304 T=0.3, Nickel plating	
2	CONTACT	Copper T=0.25, Gold plating over Nickel	
1	HOUSING	LCP, UL94V-0, Black	
NO. PART NAME		DESCRIPTION	
UNLESS OTHERWISE SPECIFIED TOLERANCE			
UNIT:	DECIMAL	LINEAR	ANGLES
	mm	X, ±0.50	±5°
		X.XX ±0.25	±3°
	X.XX ±0.12	±1°	
DRAWN: Fros 2017/01/17			
DRAWN NAME: USB 3.0 A Receptacle Flank DIP Type, G/F, Tray			
CHECKED: Tim 2017/01/17			
APPROVED: Ken 2017/01/17			
SCALE: 1.5/1		SHEET: 1/1	
SIZE: A4		FILE NAME: 209B-DX04_B_1	



WWW.ATTEND.COM.TW

DRAWN	Fros	2017/01/17	DRAWN NAME:	USB 3.0 A Receptacle Flank DIP Type, G/F, Tray
CHECKED	Tim	2017/01/17	PRODUCT NO.	209B-DX04
APPROVED	Ken	2017/01/17	SCALE	1.5/1
			SHEET	1/1
			SIZE	A4
			FILE NAME	209B-DX04_B_1