

## Features

- Standard E.I.A. package compatible with automatic placement equipment
- Tape and reel packaging standard (see page 286 for dimensions)
- For ordering guidelines, see page 286
- Marking on contrasting background for permanent identification

- Compliant leads to reduce solder joint fatiguing
- Standard electrical schematics: isolated, bussed, dual terminator
- Custom circuits are available

# 4800P Series - Thick Film Surface Mounted Medium Body

### Product Characteristics

**Resistance Range**  
 ..... 10 ohms to 2.2 megohms  
**Maximum Operating Voltage** ..... 50V  
**Temperature Coefficient of Resistance**  
 50Ω and above ..... ±100ppm/°C  
 below 50Ω ..... ±250ppm/°C  
**TCR Tracking**  
 ..... 50ppm/°C max.; equal values  
 100ppm/°C 50W and above  
**Operating Temperature**  
 ..... -55°C to +125°C  
**Insulation Resistance**  
 ..... 10,000 megohms min.  
**Dielectric Withstanding Voltage**  
 ..... 200 VRMS  
**Lead Solderability**  
 ..... Meet requirements of MIL-STD-202 Method 208

### Environmental Characteristics

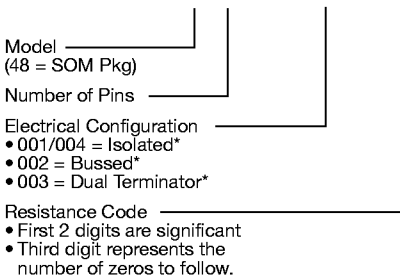
**TESTS PER MIL-STD-202** ..... ΔR MAX.  
**Short Time Overload** ..... ±0.25%  
**Load Life** ..... ±1.00%  
**Moisture Resistance** ..... ±0.50%  
**Resistance to Soldering Heat** ..... ±0.25%  
**Thermal Shock** ..... ±0.25%

### Physical Characteristics

**Flammability** ..... Conforms to UL94V-0  
**Lead Frame Material**  
 ..... Copper, solder coated  
**Body Material** ..... Novolac epoxy

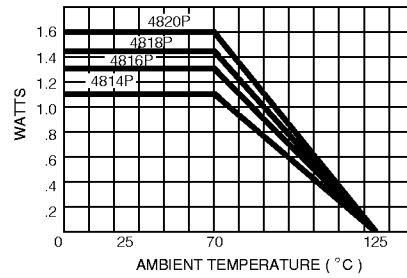
### How To Order

**48 16 P - 001 - 103**



\*For tube packaging, use T01, T02, T03 or T04.  
 Consult factory for other available options.

### Package Power Temp. Derating Curve

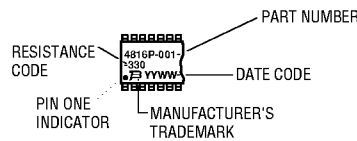


### Package Power Rating at 70°C

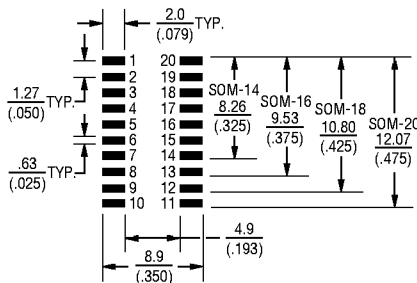
4814P	1.12 watts
4816P	1.28 watts
4818P	1.44 watts
4820P	1.60 watts

### Typical Part Marking

Represents total content. Layout may vary.

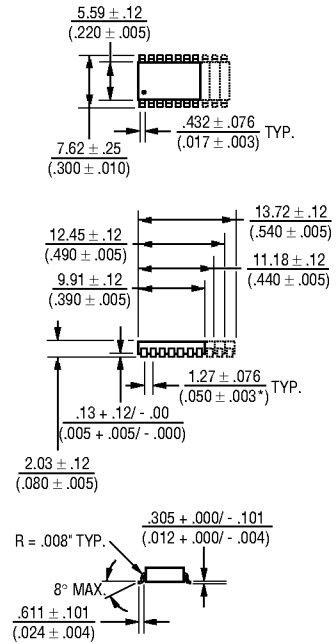


### Recommended Land Pattern



NOTE: Land pattern dimensions are based on design rules established by the Institute for Interconnecting and Packaging Electronic Circuits in IPC-SM-782.

### Product Dimensions



Lead coplanarity .102mm (.004 inch) max. at mounting surface.

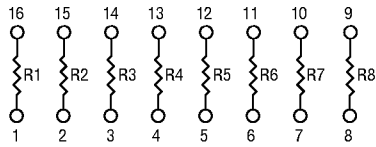
Governing dimensions are in metric. Dimensions in parentheses are inches and are approximate.

\*Terminal centerline to centerline measurements made at point of emergence of the lead from the body.

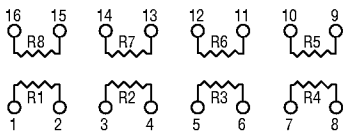
# 4800P Series - Thick Film Surface Mounted Medium Body **BOURNS®**

**Isolated Resistors (001 And 004 Circuits)**

- Model 4814P-001
- Model 4816P-001 (Shown)
- Model 4818P-001
- Model 4820P-001



- Model 4816P-004 (Shown)
- Model 4820P-004



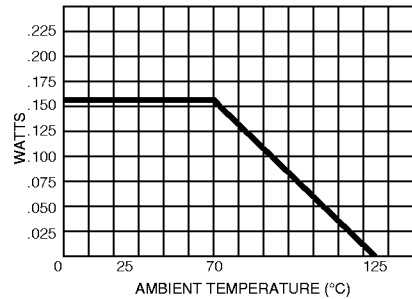
**Resistance Tolerance**

10 ohms to 49 ohms .....±1 ohm  
50 ohms to 2.2 megohms.....±2%\*

**Power Rating per Resistor**

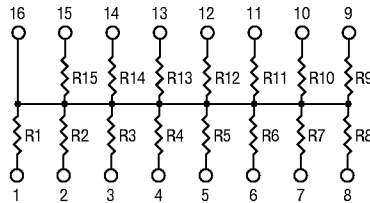
001 Circuit at 70°C .....0.160 watt  
004 Circuit at 70°C .....0.160 watt

**Resistor Power Temp. Derating Curve**



**Bussed Resistors (002 Circuit)**

- Model 4814P-002
- Model 4816P-002 (Shown)
- Model 4818P-002
- Model 4820P-002



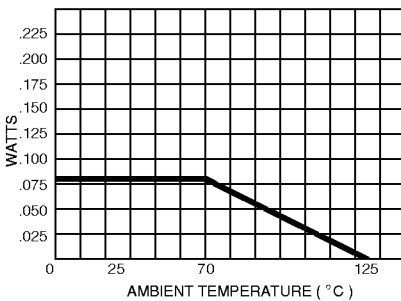
**Resistance Tolerance**

10 ohms to 49 ohms .....±1 ohm  
50 ohms to 2.2 megohms .....±2%\*

**Power Rating per Resistor**

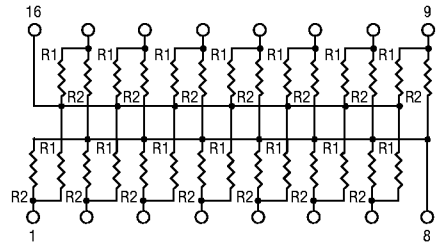
002 Circuit at 70°C .....0.080 watt

**Resistor Power Temp. Derating Curve**



**Dual Terminator (003 Circuit)**

- Model 4814P-003
- Model 4816P-003 (Shown)
- Model 4818P-003
- Model 4820P-003



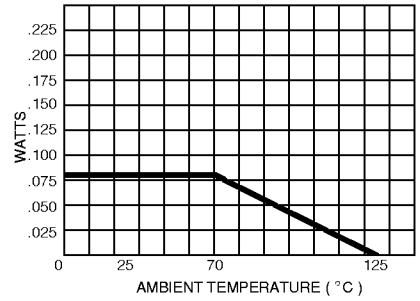
**Resistance Tolerance**

Below 100 ohms .....±2 ohms  
100 ohms to 2.2 megohms .....±2%\*

**Power Rating per Resistor**

003 Circuit at 70°C .....0.080 watt

**Resistor Power Temp. Derating Curve**



**Popular Resistance Values (001, 004, And 002 Circuits)\*\***

Ohms	Code	Ohms	Code	Ohms	Code	Ohms	Code	Ohms	Code
10	100	180	181	1,800	182	15,000	153	120,000	124
22	220	220	221	2,000	202	18,000	183	150,000	154
27	270	270	271	2,200	222	20,000	203	180,000	184
33	330	330	331	2,700	272	22,000	223	220,000	224
39	390	390	391	3,300	332	27,000	273	270,000	274
47	470	470	471	3,900	392	33,000	333	330,000	334
56	560	560	561	4,700	472	39,000	393	390,000	394
68	680	680	681	5,600	562	47,000	473	470,000	474
82	820	820	821	6,800	682	56,000	563	560,000	564
100	101	1,000	102	8,200	822	68,000	683	680,000	684
120	121	1,200	122	10,000	103	82,000	823	820,000	824
150	151	1,500	152	12,000	123	100,000	104	1,000,000	105

\* ±1% TOLERANCE IS AVAILABLE BY ADDING SUFFIX CODE "F" AFTER THE RESISTANCE CODE.

\*\*NON-STANDARD VALUES AVAILABLE, WITHIN RESISTANCE RANGE.

**Popular Resistance Values (003 Circuit)\*\***

Resistance			
(Ohms)		Code	
R <sub>1</sub>	R <sub>2</sub>	R <sub>1</sub>	R <sub>2</sub>
160	240	161	241
180	390	181	391
220	270	221	271
220	330	221	331
330	390	331	391
330	470	331	471
3,000	6,200	302	622