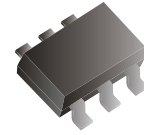


## CDBV6-00340TI-G

**Forward Current: 30mA**  
**Reverse Voltage: 40V**  
**RoHS Device**

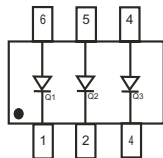


### Features

- Low forward voltage drop.
- Fast switching.
- Ultra-small surface mount package.
- PN junction guard ring for transient and ESD protection.
- Available in lead Free version.

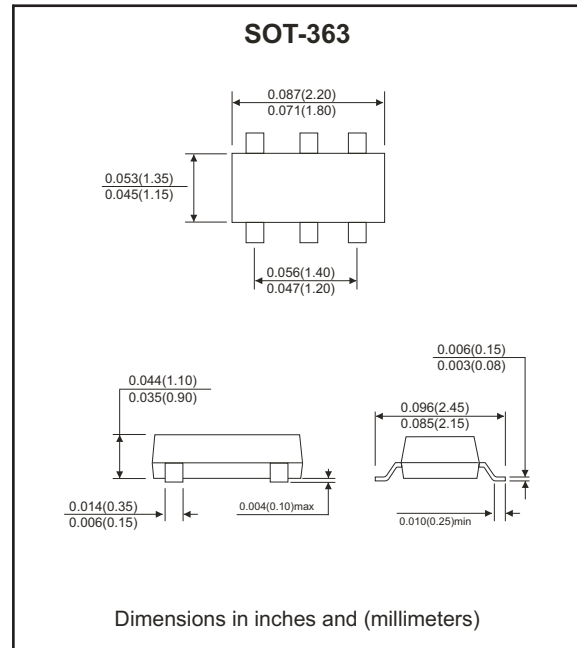
### Mechanical data

- Case: SOT-363, Molded Plastic
- Case material: UL 94V-0 flammability retardant classification.
- Terminals: Solderable per MIL-STD-202, Method 208
- Marking: Orientation: See diagrams below
- Weight: 0.006 grams (approx.)
- Marking: 731



CDBV6-00340TI-G

\*Symmetrical configuration, no orientation indicator.



### Maximum Ratings (at Ta=25°C unless otherwise noted)

Parameter	Symbol	Limits	Unit
Peak repetitive reverse voltage	$V_{RM}$	40	V
DC blocking voltage	$V_R$	40	V
Forward continuous current	$I_F$	30	mA
Forward surge current (Note 1) @t<1.0s	$I_{FSM}$	200	mA
Operation and storage temperature range	$T_J$	125	°C
Operation and storage temperature range	$T_{STG}$	-40 ~ +125	°C

### Electrical Characteristics (at Ta=25°C unless otherwise noted)

Parameter	Conditions	Symbol	Min	Typ	Max	Unit
Forward voltage	$I_F=1mA$	$V_F$			0.37	mV
Reverse leakage current	$V_R=10V$	$I_R$			1	μA
Total capacitance	$V_R=1.0V, f=1.0MHz$	$C_T$		2		pF

Notes1 : 60HZ \* 1 Cyc.

## ELECTRICAL CHARACTERISTIC CURVES (CDBV6-00340TI-G)

Fig.1 Forward Characteristics

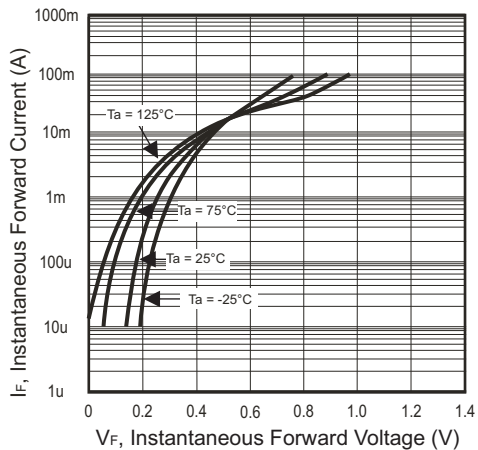


Fig.2 Reverse Characteristics

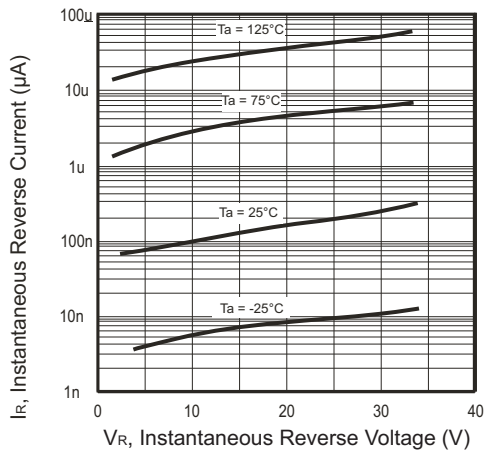
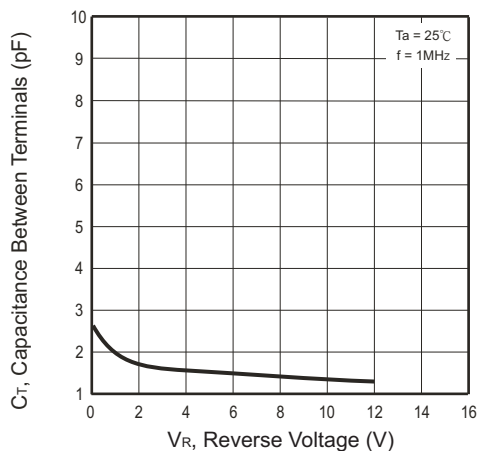
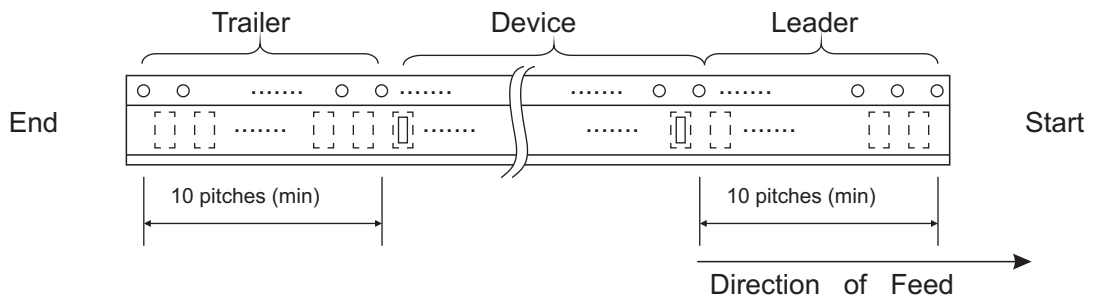
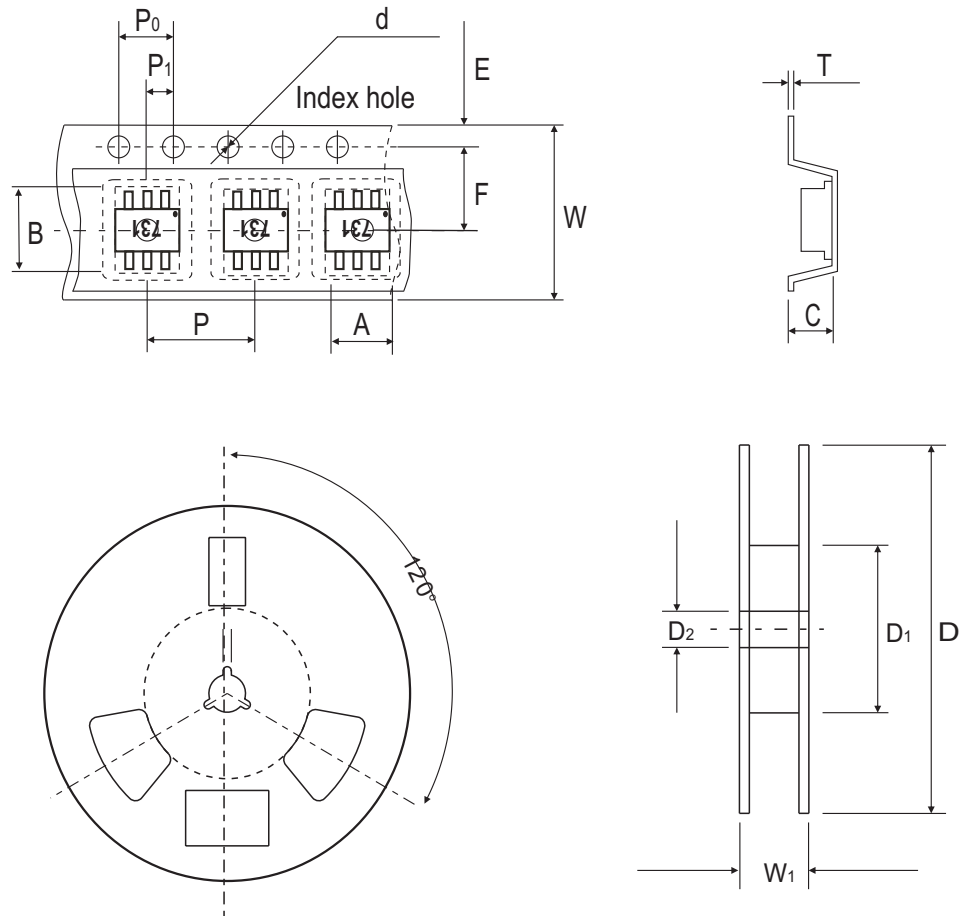


Fig.3 Capacitance Between Terminals Characteristics



## Reel Taping Specification

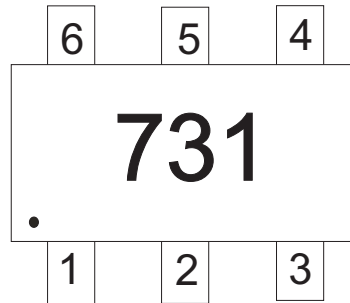


SOT-363	SYMBOL	A	B	C	d	D	D1	D2
	(mm)	$2.20 \pm 0.10$	$2.40 \pm 0.10$	$1.35 \pm 0.10$	$1.55 \pm 0.10$	$178 \pm 1$	50.0 MIN.	$13.0 \pm 0.20$
	(inch)	$0.087 \pm 0.004$	$0.094 \pm 0.004$	$0.053 \pm 0.004$	$0.061 \pm 0.004$	$7.008 \pm 0.040$	1.969 MIN.	$0.512 \pm 0.008$

SOT-363	SYMBOL	E	F	P	$P_0$	$P_1$	W	$W_1$
	(mm)	$1.75 \pm 0.10$	$3.50 \pm 0.05$	$4.00 \pm 0.10$	$4.00 \pm 0.10$	$2.00 \pm 0.05$	$8.00 \pm 0.30$	14.4 MAX.
	(inch)	$0.069 \pm 0.004$	$0.138 \pm 0.002$	$0.157 \pm 0.004$	$0.157 \pm 0.004$	$0.079 \pm 0.002$	$0.315 \pm 0.012$	0.567 MAX.

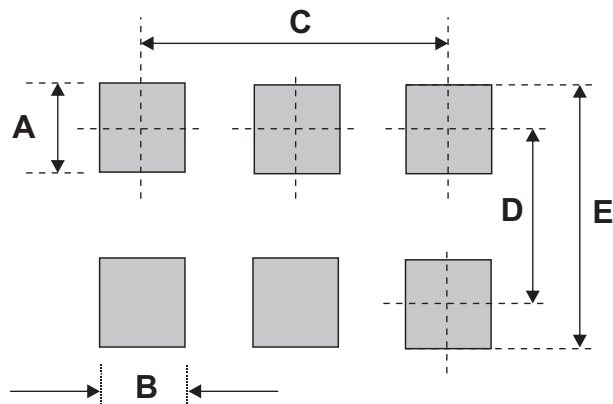
## Marking Code

Park Number	Marking Code
CDBV6-00340TI-G	731



## Suggested PAD Layout

SIZE	SOT-363	
	(mm)	(inch)
A	0.80	0.033
B	0.35	0.014
C	1.30	0.005
D	1.94	0.076
E	3.88	0.152



## Standard Packaging

Case Type	REEL PACK	
	REEL ( pcs )	Reel Size (inch)
SOT-363	3,000	7