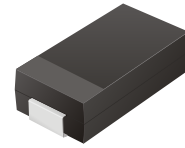


CGRB301 Thru CGRB307

Glass Passivated Type
Reverse Voltage: 50 - 1000 Volts
Forward Current: 3.0 Amp

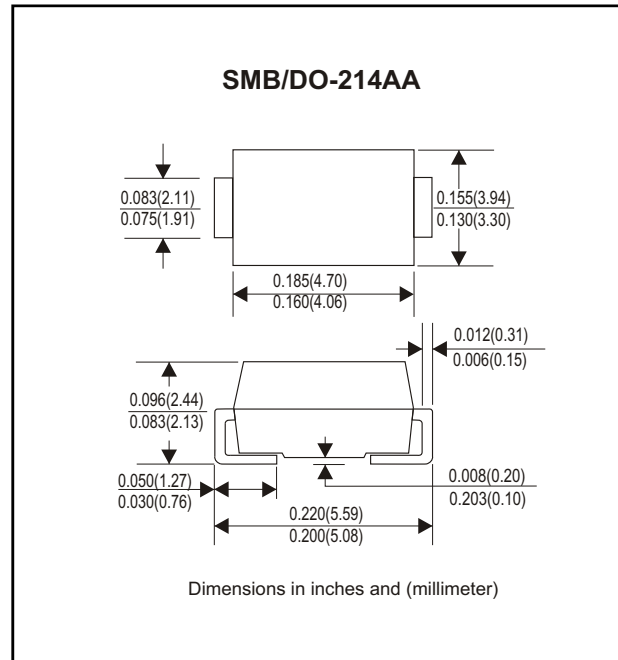


Features

- Ideal for surface mount applications
- Easy pick and place
- Plastic package has Underwriters Lab. flammability classification 94V-0
- Built-in strain relief
- High surge current capability

Mechanical data

- Case: JEDEC DO-214AA molded plastic
- Terminals: solderable per MIL-STD-750, method 2026
- Polarity: Color band denotes cathode end
- Mounting position: Any
- Approx. Weight: 0.093 gram



Maximum Ratings and Electrical Characteristics

| Parameter | Symbol | CGRB 301 | CGRB 302 | CGRB 303 | CGRB 304 | CGRB 305 | CGRB 306 | CGRB 307 | Unit |
|--|------------------|-------------|----------|----------|----------|----------|----------|----------|------|
| Max. Repetitive Peak Reverse Voltage | V _{RRM} | 50 | 100 | 200 | 400 | 600 | 800 | 1000 | V |
| Max. DC Blocking Voltage | V _{DC} | 50 | 100 | 200 | 400 | 600 | 800 | 1000 | V |
| Max. RMS Voltage | V _{RMS} | 35 | 70 | 140 | 280 | 420 | 560 | 700 | V |
| Peak Surge Forward Current 8.3ms single halfsine-wave superimposed on rate load (JEDEC method) | I _{FSM} | 100 | | | | | | | A |
| Max. Average Forward Current | I _o | 3.0 | | | | | | | A |
| Max. Instantaneous Forward Current at 3.0 A | V _F | 1.1 | | | | | | | V |
| Max. DC Reverse Current at Rated DC Blocking Voltage Ta=25°C Ta=100°C | I _R | 5 50 | | | | | | | uA |
| Max. Thermal Resistance (Note 1) | R _{θJA} | 50 | | | | | | | °C/W |
| Operating Junction Temperature | T _j | -55 to +150 | | | | | | | °C |
| Storage Temperature | T _{STG} | -55 to +150 | | | | | | | °C |

Note 1: Thermal resistance from junction to ambient.

Rating and Characteristic Curves (CGRB301 Thru CGRB307)

Fig. 1 - Reverse Characteristics

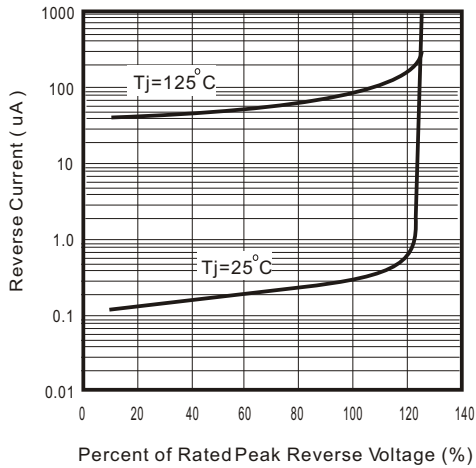


Fig.2 - Forward Characteristics

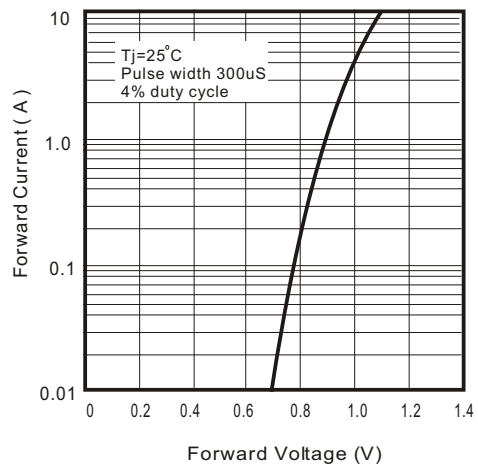


Fig. 3 - Junction Capacitance

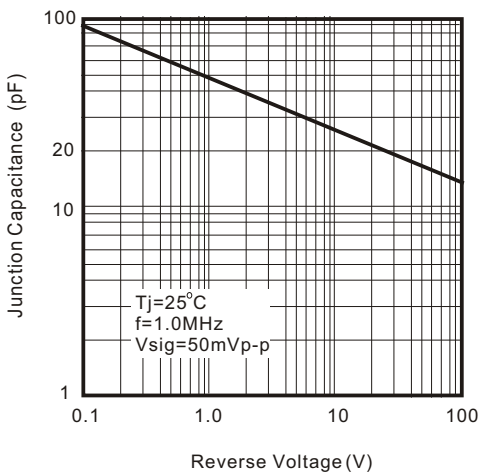


Fig. 4 - Current Derating Curve

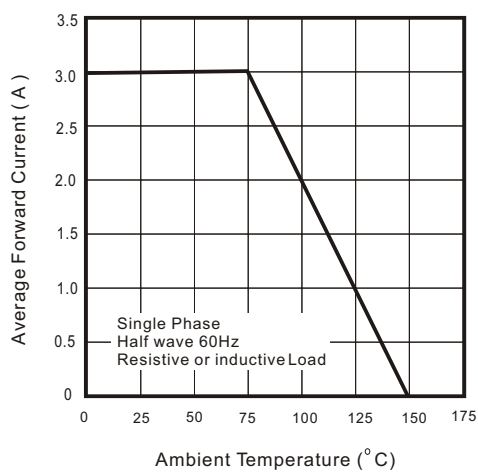


Fig. 5 - Non Repetitive Forward Surge Current

