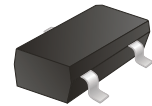


CDSV3-217-G

Reverse Voltage: 80 Volts
 Forward Current: 300 mA
 RoHS Device



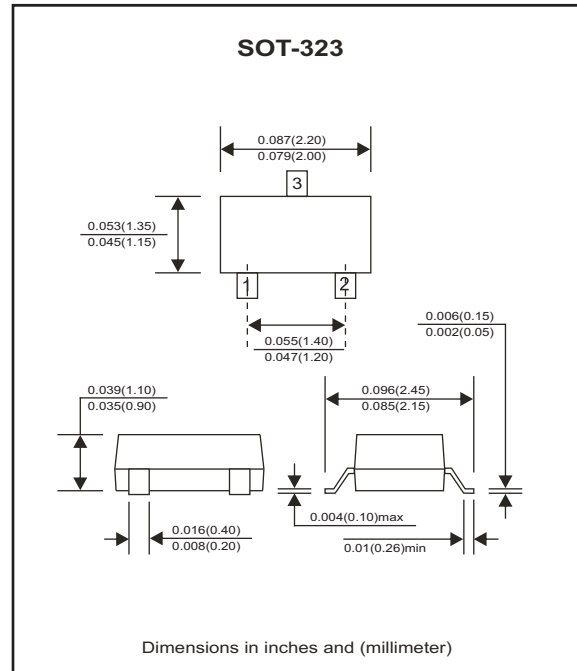
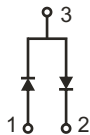
Features

- Designed for mounting on small surface.
- High speed switching.
- High mounting capability, strong surge withstand, high reliability.

Mechanical data

- Case: SOT-323, molded plastic.
- Terminals: Solder plated, solderable per MIL-STD-750, method 208.
- Weight: 0.006 gram(approx.).

CDSV3-217-G



Maximum Ratings(at TA=25 °C unless otherwise noted)

Parameter	Conditions	Symbol	Min	Typ	Max	Unit
Peak reverse voltage		V _{RM}			80	V
Reverse voltage		V _R			80	V
Forward current		I _{FM}			300	mA
Average forward current		I _o			100	mA
Forward current, surge peak	T = 10ms	I _{FSM}			1	A
Power dissipation		P _D			200	mW
Storage temperature		T _{STG}	-55		+125	°C
Junction temperature		T _j			+125	°C

Electrical Characteristics (at TA=25 °C unless otherwise noted)

Parameter	Conditions	Symbol	Min	Typ	Max	Unit
Forward voltage	I _F = 100mA	V _F			1.2	V
Reverse current	V _R = 70V	I _R			0.1	uA
Reverse breakdown voltage	I _R = 100uA	V _{BR}	80			V
Junction Capacitance	f=1MHz, and 0 VDC reverse voltage	C _T			2	pF

RATING AND CHARACTERISTIC CURVES (CDSV3-217-G)

Fig. 1 - Forward characteristics

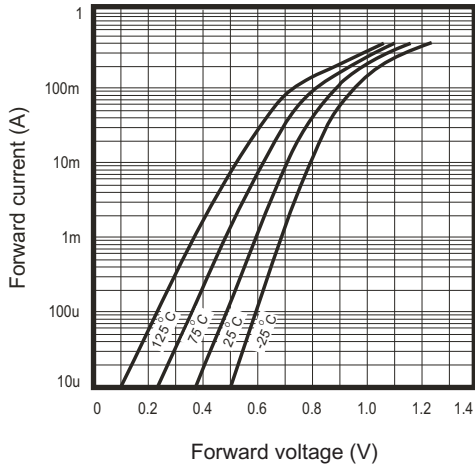


Fig. 2 - Reverse characteristics

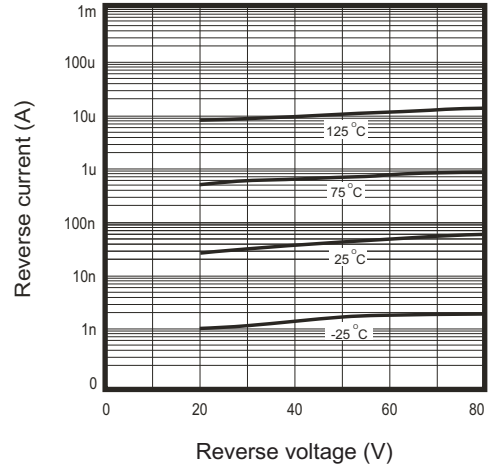


Fig.3 - Capacitance between terminals characteristics

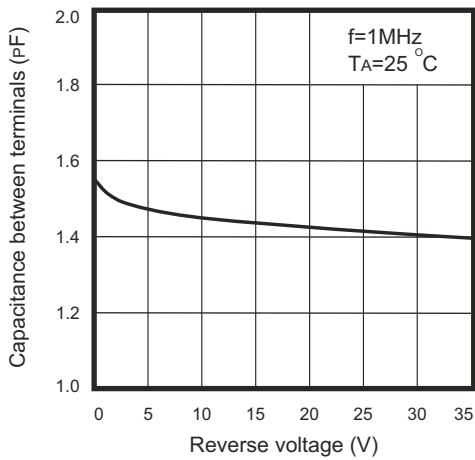
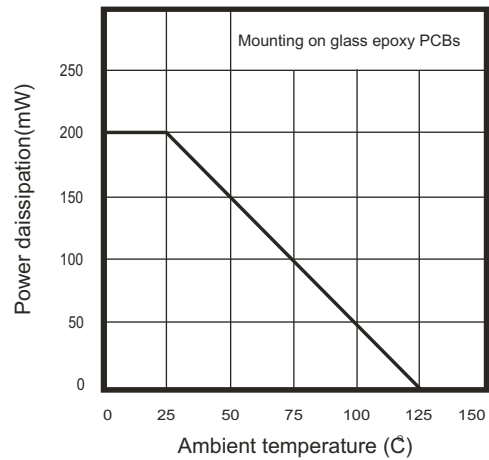
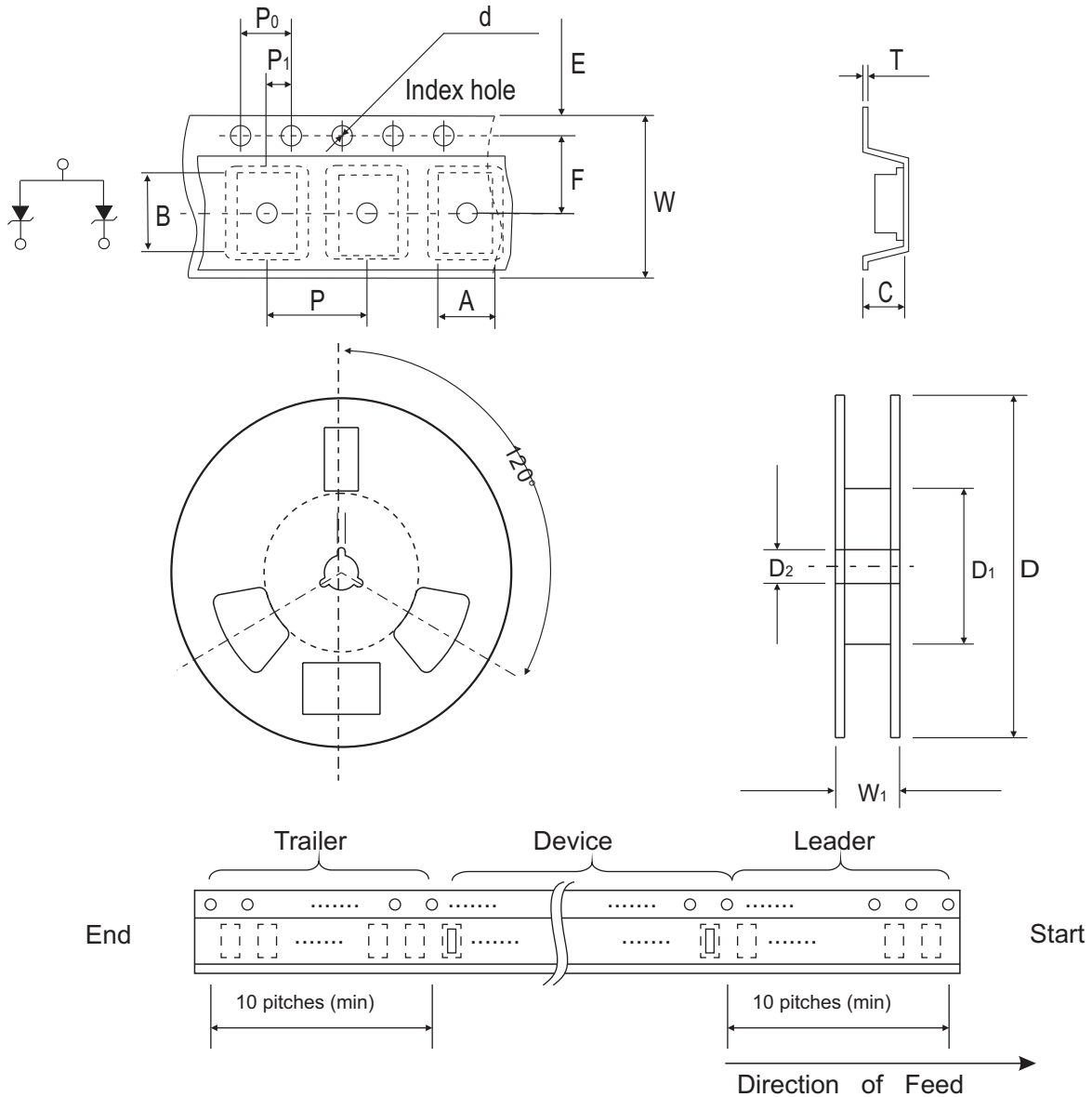


Fig.4 - Power derating curve



Reel Taping Specification

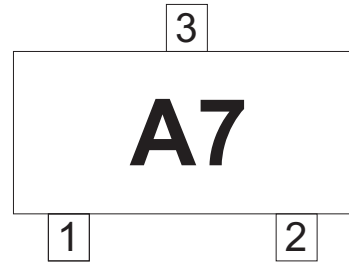


SOT-323	SYMBOL	A	B	C	d	D	D1	D2
	(mm)	2.20 ± 0.10	2.40 ± 0.10	1.15 ± 0.10	1.55 ± 0.10	178 ± 1	50.0 MIN.	13.0 ± 0.20
	(inch)	0.087 ± 0.004	0.094 ± 0.004	0.045 ± 0.004	0.061 ± 0.004	7.008 ± 0.040	1.969 MIN.	0.512 ± 0.008

SOT-323	SYMBOL	E	F	P	P0	P1	W	W1
	(mm)	1.75 ± 0.10	3.50 ± 0.05	4.00 ± 0.10	4.00 ± 0.10	2.00 ± 0.05	8.00 ± 0.30	14.4 MAX.
	(inch)	0.069 ± 0.004	0.138 ± 0.002	0.157 ± 0.004	0.157 ± 0.004	0.079 ± 0.002	0.315 ± 0.012	0.567 MAX

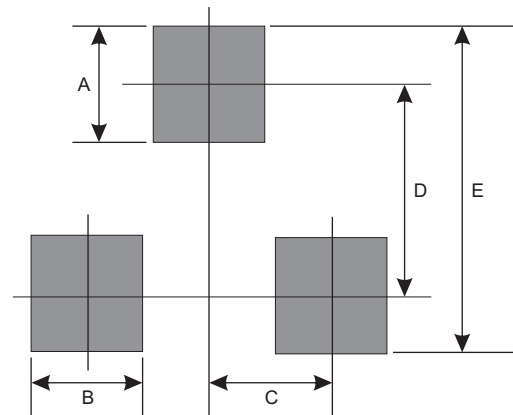
Marking Code

Park Number	Marking Code
CDSV3-217-G	A7



Suggested PAD Layout

SIZE	SOT-323	
	(mm)	(inch)
A	0.80	0.032
B	0.80	0.032
C	0.65	0.025
D	1.94	0.076
E	3.88	0.152



Standard Package

Case Type	Qty per Reel	Reel Size
	(Pcs)	(inch)
SOT-323	3000	7