

SMD Transient Voltage Suppressor



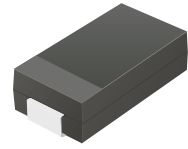
SMD Diodes Specialist

TV15C5V0-G Thru. TV15C441-G

Working Peak Reverse Voltage: 5.0 - 440 Volts

Power Dissipation: 1500Watts

RoHS Device

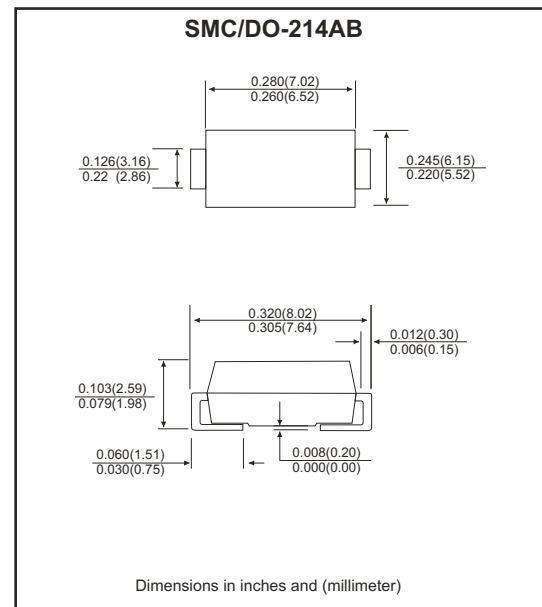


Features

- Ideally for surface mount applications.
- Easy pick and place.
- Plastic package has Underwriters Lab. flammability classification 94V-0.
- Typical IR less than 1 μ A above 10V.
- Fast response time: typically less 1nS for uni-direction, less than 5nS for bi-directional, from 0V to BV min.

Mechanical Data

- Case: JEDEC DO-214AB molded plastic.
- Terminals: solderable per MIL-STD-750, method 2026.
- Polarity: Cathode band denoted.
- Weight: Approx. 0.21 grams.



Maximum Ratings and Electrical Characteristics

Rating at 25 °C ambient temperature unless otherwise specific.
 Single phase, half wave, 60Hz, resistive or inductive load.
 For capacitive load, derate current by 20%.

Characteristics	Symbol	Value	Units
Peak power dissipation at 10/1000 μ S waveform	P _{PPM}	1500	W
Peak pulse current at 10/1000 μ S waveform	I _{PPM}	See table 1	A
Steady state power dissipation at T _L =75 °C	P _{M(AV)}	5.0	W
Peak forward surge current, 8.3ms single half sine-wave superimposed on rated load, uni-directional only	I _{FSM}	200	A
Maximum instantaneous forward voltage at 100A for uni-directional only	V _F	3.5/5/0	V
Operation junction temperature range	T _J	-55 to +150	°C
Storage temperature range	T _{STG}	-55 to +150	°C

Notes:

1. Non-repetitive current pulse, per Fig. 5 and derated above T_A=25 °C, per Fig. 1
2. Measured on 8.3 ms single half sine-wave or equivalent square wave, duty cycle=4 pulses per minute maximum.
3. V_F<3.5V for devices of V_{BR}<200V and V_F<5.0V for devices of V_{BR}>201V

Rev. B

Page 1

SMD Transient Voltage Suppressor



SMD Diodes Specialist

Ratings and Characteristics Curve (TV15C5V0-G Thru. TV15C441-G)

Fig.1 Pulse Derating Curve

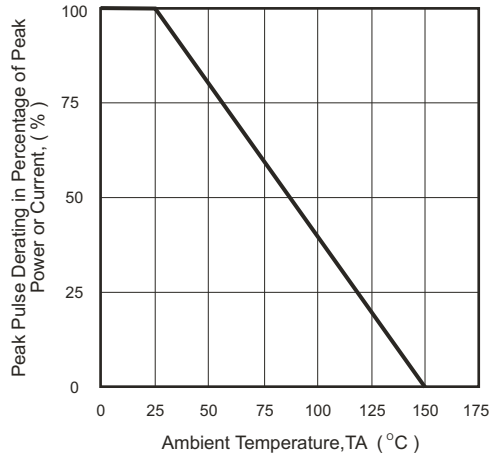


Fig.2 Max. Non-Repetitive Surge Current

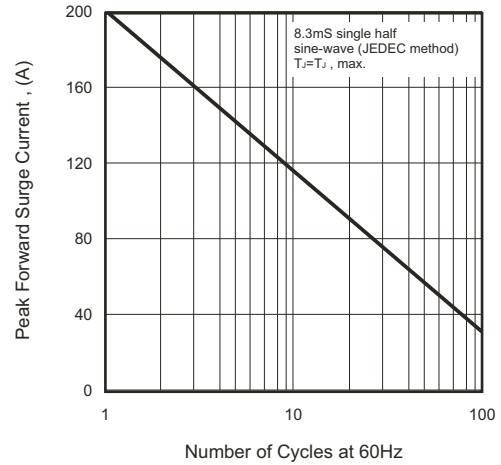


Fig.3 Steady State Power Derating Curve

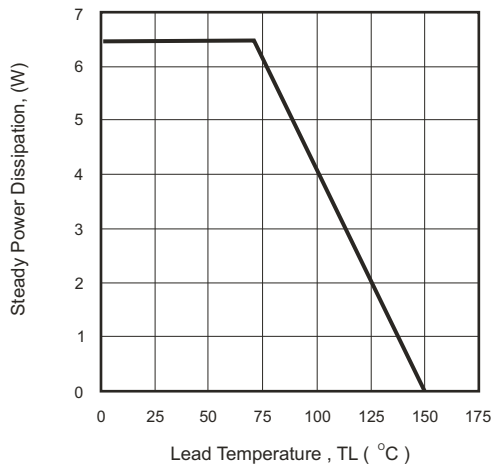


Fig.4 Peak Pulse Power Rating Curve

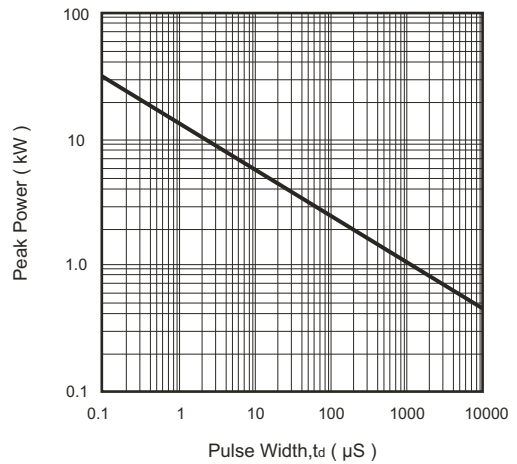


Fig.5 Pulse Waveform

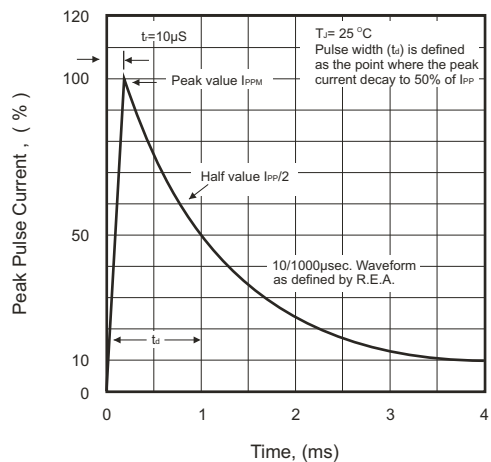
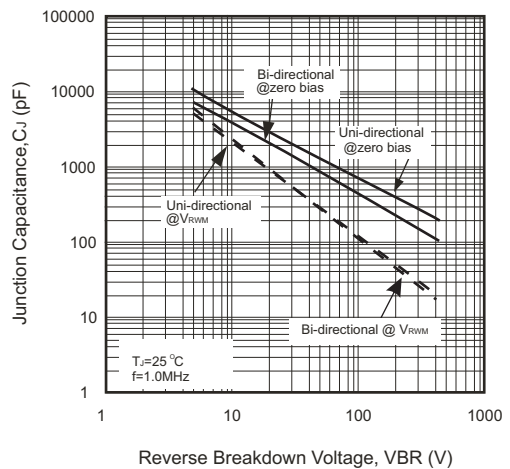


Fig.6 Typical Junction Capacitance



SMD Transient Voltage Suppressor



SMD Diodes Specialist

Electrical Characteristics (TV15C5V0-G Thru. TV15C441-G)

Part No	Absolute Maximum Rating(Ta=25° C)					Electrical Characteristic(Ta=25° C)				
	V _{RWM}	V _{BR} Min	V _{BR} Max	I _T	I _{FSM}	MAX V _C	I _R @V _{RWM}	Marking Code		
	(V)	(V)	(V)	(mA)	(A)@8.3ms	(V)	IPP(A)	(μ A)	UNI	BI
TV15C5V0K(B)-G	5.00	6.40	7.82	10	200	9.6	156.25	1000	GDD	BDD
TV15C5V0J(B)-G	5.00	6.40	7.07	10	200	9.2	163.04	1000	GDE	BDE
TV15C6V0K(B)-G	6.00	6.67	8.15	10	200	11.4	131.58	1000	GDF	BDF
TV15C6V0J(B)-G	6.00	6.67	7.37	10	200	10.3	145.63	1000	GDG	BDG
TV15C6V5K(B)-G	6.50	7.22	8.82	10	200	12.3	121.95	500	GDH	BDH
TV15C6V5J(B)-G	6.50	7.22	7.98	10	200	11.2	133.93	500	GDK	BDK
TV15C7V0K(B)-G	7.00	7.78	9.51	1	200	13.3	112.78	200	GDL	BDL
TV15C7V0J(B)-G	7.00	7.78	8.60	1	200	12.0	125.00	200	GDM	BDM
TV15C7V5K(B)-G	7.50	8.33	10.20	1	200	14.3	104.90	100	GDN	BDN
TV15C7V5J(B)-G	7.50	8.33	9.21	1	200	12.9	116.28	100	GDP	BDP
TV15C8V0K(B)-G	8.00	8.89	10.90	1	200	15.0	100.00	50	GDQ	BDQ
TV15C8V0J(B)-G	8.00	8.89	9.83	1	200	13.6	110.29	50	GDR	BDR
TV15C8V5K(B)-G	8.55	9.44	11.50	1	200	15.9	94.34	20	GDS	BDS
TV15C8V5J(B)-G	8.55	9.44	10.40	1	200	14.4	104.17	20	GDT	BDT
TV15C9V0K(B)-G	9.00	10.00	12.20	1	200	16.9	88.76	10	GDU	BDU
TV15C9V0J(B)-G	9.00	10.00	11.10	1	200	15.4	97.40	10	GDV	BDV
TV15C100K(B)-G	10.0	11.10	13.60	1	200	18.8	79.79	5	GDW	BDW
TV15C100J(B)-G	10.0	11.10	12.30	1	200	17.0	88.24	5	GDX	BDX
TV15C110K(B)-G	11.0	12.20	14.90	1	200	20.1	74.63	5	GDY	BDY
TV15C110J(B)-G	11.0	12.20	13.50	1	200	18.2	82.42	5	GDZ	BDZ
TV15C120K(B)-G	12.0	13.30	16.30	1	200	22.0	68.18	5	GED	BED
TV15C120J(B)-G	12.0	13.30	14.70	1	200	19.9	75.38	5	GEE	BEE
TV15C130K(B)-G	13.0	14.40	17.60	1	200	23.8	63.03	5	GEF	BEF
TV15C130J(B)-G	13.0	14.40	15.90	1	200	21.5	69.77	5	GDG	BEG
TV15C140K(B)-G	14.0	15.60	19.10	1	200	25.8	58.14	5	GEH	BEH
TV15C140J(B)-G	14.0	15.60	17.20	1	200	23.2	64.66	5	GEK	BEK
TV15C150K(B)-G	15.0	16.70	20.40	1	200	26.9	55.76	5	GEL	BEL
TV15C150J(B)-G	15.0	16.70	18.50	1	200	24.4	61.48	5	GEM	BEM
TV15C160K(B)-G	16.0	17.80	21.80	1	200	28.8	52.08	5	GEN	BEN
TV15C160J(B)-G	16.0	17.80	19.70	1	200	26.0	57.69	5	GEP	BEP
TV15C170K(B)-G	17.0	18.90	23.10	1	200	30.5	49.18	5	GEQ	BEQ
TV15C170J(B)-G	17.0	18.90	20.90	1	200	27.6	54.35	5	GER	BER
TV15C180K(B)-G	18.0	20.00	24.40	1	200	32.2	46.58	5	GES	BES
TV15C180J(B)-G	18.0	20.00	22.10	1	200	29.2	51.37	5	GET	BET
TV15C190K(B)-G	19.0	21.13	25.76	1	200	34.0	44.10	5	GEA	BEA
TV15C190J(B)-G	19.0	21.10	23.30	1	200	30.8	48.73	5	GEB	BEB
TV15C200K(B)-G	20.0	22.20	27.10	1	200	35.8	41.90	5	GEU	BEU
TV15C200J(B)-G	20.0	22.20	24.50	1	200	32.4	46.30	5	GEV	BEV
TV15C220K(B)-G	22.0	24.40	29.80	1	200	39.4	38.07	5	GEW	BEW
TV15C220J(B)-G	22.0	24.40	26.90	1	200	35.5	42.25	5	GEX	BEX
TV15C240K(B)-G	24.0	26.70	32.60	1	200	43.0	34.88	5	GEY	BEY
TV15C240J(B)-G	24.0	26.70	29.50	1	200	38.9	38.56	5	GEZ	BEZ
TV15C260K(B)-G	26.0	28.90	35.30	1	200	46.6	32.19	5	GFD	BFD
TV15C260J(B)-G	26.0	28.90	31.90	1	200	42.1	35.63	5	GFE	BFE
TV15C280K(B)-G	28.0	31.10	38.00	1	200	50.0	30.00	5	GFF	BFF
TV15C280J(B)-G	28.0	31.10	34.40	1	200	45.4	33.04	5	GFG	BFG
TV15C300K(B)-G	30.0	33.30	40.70	1	200	53.5	28.04	5	GFH	BFH
TV15C300J(B)-G	30.0	33.30	36.80	1	200	48.4	30.99	5	GFK	BFK

SMD Transient Voltage Suppressor



SMD Diodes Specialist

Electrical Characteristics (TV15C5V0-G Thru. TV15C441-G)

Part No	Absolute Maximum Rating(Ta=25 °C)					Electrical Characteristic(Ta=25 °C)				
	V _{RWM}	V _{BR} Min	V _{BR} Max	I _T	I _{FSM}	MAX V _C	I _R @V _{RWM}	Marking Code		
	(V)	(V)	(V)	(mA)	(A)@8.3ms	(V)	IPP(A)	(uA)	UNI	BI
TV15C330K(B)-G	33.0	36.7	44.9	1	200	59.0	25.2	5	GFL	BFL
TV15C330J(B)-G	33.0	36.7	40.6	1	200	53.3	28.1	5	GFM	BFM
TV15C360K(B)-G	36.0	40.00	48.90	1	200	64.3	23.33	5	GFN	BFN
TV15C360J(B)-G	36.0	40.00	44.20	1	200	58.1	25.82	5	GFP	BFP
TV15C400K(B)-G	40.0	44.40	54.30	1	200	71.4	21.01	5	GFQ	BFQ
TV15C400J(B)-G	40.0	44.40	49.10	1	200	64.5	23.26	5	GFR	BFR
TV15C430K(B)-G	43.0	47.80	58.40	1	200	76.7	19.56	5	GFS	BFS
TV15C430J(B)-G	43.0	47.80	52.80	1	200	69.4	21.61	5	GFT	BFT
TV15C450K(B)-G	45.0	50.00	61.10	1	200	80.3	18.68	5	GFU	BFU
TV15C450J(B)-G	45.0	50.00	55.30	1	200	72.7	20.63	5	GFV	BFV
TV15C480K(B)-G	48.0	53.30	65.10	1	200	85.5	17.54	5	GFW	BFW
TV15C480J(B)-G	48.0	53.30	58.90	1	200	77.4	19.38	5	GFX	BFX
TV15C510K(B)-G	51.0	56.70	69.30	1	200	91.1	16.47	5	GFY	BFY
TV15C510J(B)-G	51.0	56.70	62.70	1	200	82.4	18.20	5	GFZ	BFZ
TV15C540K(B)-G	54.0	60.00	73.30	1	200	96.3	15.58	5	GGD	BGD
TV15C540J(B)-G	54.0	60.00	66.30	1	200	87.1	17.22	5	GGE	BGE
TV15C580K(B)-G	58.0	64.40	78.70	1	200	103.0	14.56	5	GGF	BGF
TV15C580J(B)-G	58.0	64.40	71.20	1	200	93.6	16.03	5	GGG	BGG
TV15C600K(B)-G	60.0	66.70	81.50	1	200	107.0	14.02	5	GGH	BGH
TV15C600J(B)-G	60.0	66.70	73.70	1	200	96.8	15.50	5	GGK	BGK
TV15C640K(B)-G	64.0	71.10	86.90	1	200	114.0	13.16	5	GGL	BGL
TV15C640J(B)-G	64.0	71.10	78.60	1	200	103.0	14.56	5	GGM	BGM
TV15C700K(B)-G	70.0	77.80	95.10	1	200	125.0	12.00	5	GGN	BGN
TV15C700J(B)-G	70.0	77.80	86.00	1	200	113.0	13.27	5	GGP	BGP
TV15C750K(B)-G	75.0	83.30	102.00	1	200	134.0	11.19	5	GGQ	BGQ
TV15C750J(B)-G	75.0	83.30	92.10	1	200	121.0	12.40	5	GGR	BGR
TV15C780K(B)-G	78.0	86.70	106.00	1	200	139.0	10.79	5	GGS	BGS
TV15C780J(B)-G	78.0	86.70	95.80	1	200	126.0	11.90	5	GGT	BGT
TV15C800K(B)-G	80.0	88.96	108.80	1	200	143.2	10.47	5	GGA	BGA
TV15C800J(B)-G	80.0	88.80	97.60	1	200	129.6	11.57	5	GGB	BGB
TV15C850K(B)-G	85.0	94.40	115.00	1	200	151.0	9.93	5	GGU	BGU
TV15C850J(B)-G	85.0	94.40	104.00	1	200	137.0	10.95	5	GGV	BGV
TV15C900K(B)-G	90.0	100.00	122.00	1	200	160.0	9.38	5	GGW	BGW
TV15C900J(B)-G	90.0	100.00	111.00	1	200	146.0	10.27	5	GGX	BGX
TV15C101K(B)-G	100.0	111.00	136.00	1	200	179.0	8.38	5	GGY	BGY
TV15C101J(B)-G	100.0	111.00	123.00	1	200	162.0	9.26	5	GGZ	BGZ
TV15C111K(B)-G	110.0	122.00	149.00	1	200	196.0	7.65	5	GHD	BHD
TV15C111J(B)-G	110.0	122.00	135.00	1	200	177.0	8.47	5	GHE	BHE
TV15C121K(B)-G	120.0	133.00	163.00	1	200	214.0	7.01	5	GHF	BHF
TV15C121J(B)-G	120.0	133.00	147.00	1	200	193.0	7.77	5	GHG	BHG
TV15C131K(B)-G	130.0	144.00	176.00	1	200	231.0	6.49	5	GHH	BHH
TV15C131J(B)-G	130.0	144.00	159.00	1	200	209.0	7.18	5	GHK	BHK
TV15C141J(B)-G	140.0	155.68	190.40	1	200	250.6	5.99	5	GHA	BHA
TV15C141K(B)-G	140.0	155.00	171.40	1	200	226.8	6.61	5	GHB	BHB
TV15C151J(B)-G	150.0	167.00	204.00	1	200	268.0	5.60	5	GHL	BHL
TV15C151K(B)-G	150.0	167.00	185.00	1	200	243.0	6.17	5	GHM	BHM

SMD Transient Voltage Suppressor



SMD Diodes Specialist

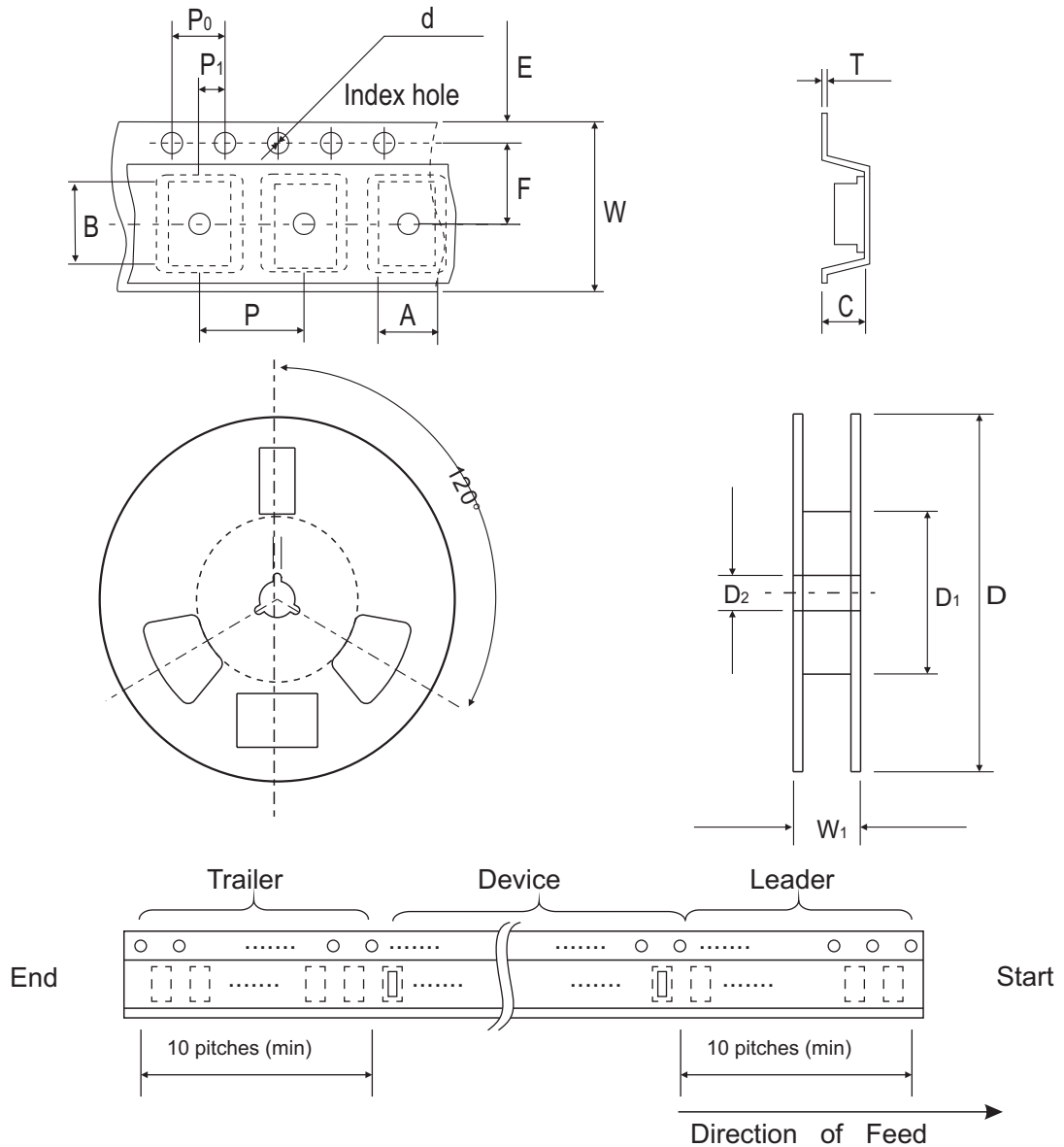
Electrical Characteristics (TV15C5V0-G Thru. TV15C441-G)

Part No.	Absolute Maximum Rating (T _A =25 °C)					Electrical Characteristic (T _A =25 °C)				
	V _{RWM}	V _{BR} Min.	V _{BR} Max.	I _T	I _{FSM}	Max V _C		I _R @V _{RWM}	Marking Code	
	(V)	(V)	(V)	(mA)	(A)@8.3mS	(V)	I _{PP} (A)	(uA)	UNI	BI
TV15C161K(B)-G	160.0	178.00	218.00	1	200	287.0	5.23	5	GHN	BHN
TV15C161J(B)-G	160.0	178.00	197.00	1	200	259.0	5.79	5	GHP	BHP
TV15C171K(B)-G	170.0	189.00	231.00	1	200	304.0	4.93	5	GHQ	BHQ
TV15C171J(B)-G	170.0	189.00	209.00	1	200	275.0	5.45	5	GHR	BHR
TV15C181K(B)-G	180.0	200.16	244.80	1	200	322.2	4.66	5	GHS	BHS
TV15C181J(B)-G	180.0	200.00	220.00	1	200	291.6	5.14	5	GHT	BHT
TV15C191K(B)-G	190.0	211.28	258.40	1	200	340.1	4.41	5	GHU	BHU
TV15C191J(B)-G	190.0	211.00	232.00	1	200	307.8	4.87	5	GHV	BHV
TV15C201J(B)-G	200.0	224.00	247.00	1	200	324.0	4.60	5	GHW	BHW
TV15C221J(B)-G	220.0	246.00	272.00	1	200	356.0	4.20	5	GHX	BHX
TV15C251J(B)-G	250.0	279.00	309.00	1	200	405.0	3.70	5	GHZ	BHZ
TV15C301J(B)-G	300.0	335.00	371.00	1	200	486.0	3.10	5	GJE	BJE
TV15C351J(B)-G	350.0	391.00	432.00	1	200	567.0	2.60	5	GJG	BJG
TV15C401J(B)-G	400.0	447.00	494.00	1	200	648.0	2.30	5	GJK	BJK
TV15C441J(B)-G	440.0	492.00	543.00	1	200	713.0	2.10	5	GJM	BJM

Note:

- 1) Suffix K denotes 10% tolerance devices, suffix J denotes 5% tolerance devices.
- 2) Suffix B after part number to specify Bi-directional devices.
- 3) For Bi-Directional devices having V_R of 10 volts and under, the I_R limit is double.

Reel Taping Specification




DO-214AB (SMC)	SYMBOL	A	B	C	d	D	D ₁	D ₂
	(mm)	6.05 ± 0.10	8.31 ± 0.10	4.50 (max)	1.55 ± 0.10-0.0	330	50.0 MIN.	13.0 ± 0.20
	(inch)	0.256 ± 0.004	0.327 ± 0.004	0.177 (max)	0.061 ± 0.004	13.00	1.969 MIN.	0.512 ± 0.008

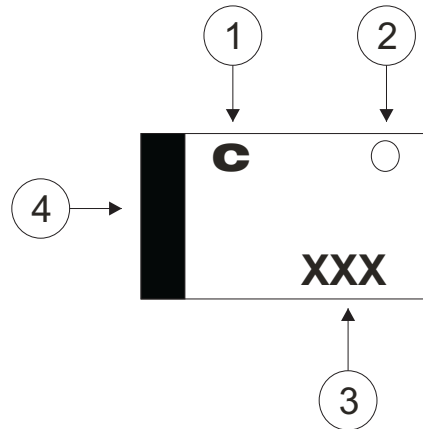
DO-214AB (SMC)	SYMBOL	E	F	P	P ₀	P ₁	W	W ₁
	(mm)	1.75 ± 0.10	7.50 ± 0.05	4.00 ± 0.10	4.00 ± 0.10	2.00 ± 1.00	16.0 ± 0.30	22.4 MAX.
	(inch)	0.069 ± 0.004	0.295 ± 0.002	0.157 ± 0.004	0.157 ± 0.004	0.079 ± 0.040	0.630 ± 0.012	0.882 MAX.

Marking Code

1. C: COMCHIP
2. 0: Package

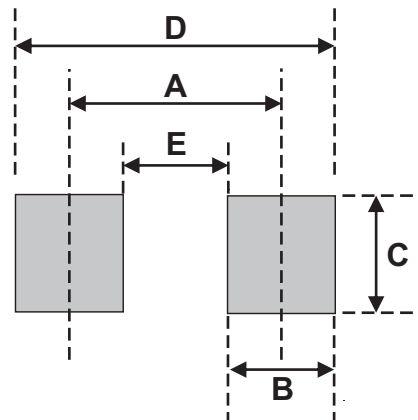
○	PKG
A	SMA
B	SMB
C	SMC

3. XXX: Marking code(see Page.3~5)
4. : Cathod Band



Suggested PAD Layout

SIZE	DO-214AB(SMC)	
	(mm)	(inch)
A	6.20	0.244
B	1.60	0.063
C	4.80	0.189
D	7.80	0.307
E	4.60	0.181



Standard Package

Case Type	Qty per Reel	Reel Size
	(Pcs)	(inch)
DO-214AB (SMC)	3000	13