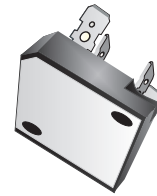


SC50VB80-G Thru. SC50VB160-G

Reverse Voltage: 800V and 1600V

Forward Current: 50A

RoHS Device

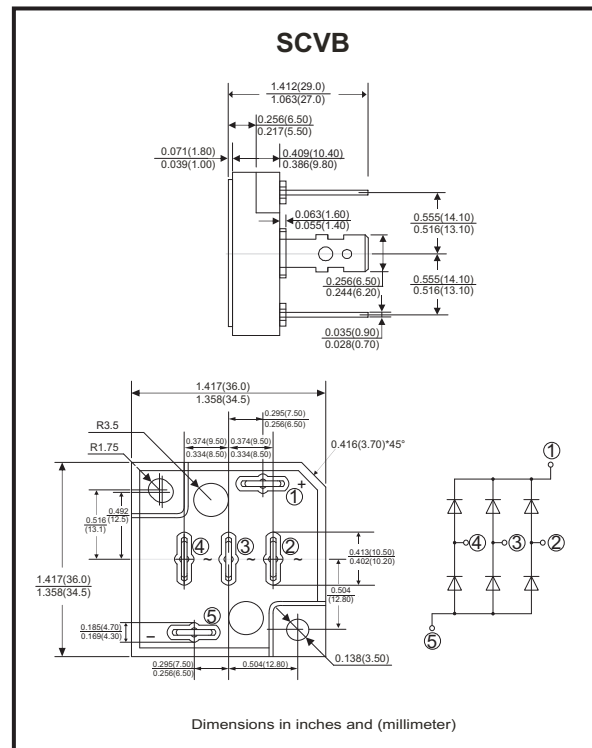


Features

- 3 phase bridge rectifiers
- Surge overload -500 Amperes peak
- Low forward voltage drop
- Materials used carries U/L recognition

Mechanical Data

- Polarit:As marked on Body
- Mounting position:Any
- Weight: 45 grams



Maximum ratings and electrical characteristics

Rating at 25 °C ambient temperature unless otherwise specified.
 Single phase, half wave ,60Hz, resistive or inductive load.
 For capacitive load, derate current by 20%

Parameter	Symbol	SC50VB80-G	SC50VB160-G	Unit
Maximum Recurrent Peak Reverse Voltage	V _{RRM}	800	1600	V
Maximum RMS Bridge Input Voltage	V _{RMS}	560	1120	V
Maximum Average Forward Rectified Output Current @T _c =55°C	I _(AV)	50		A
Peak Forward Surge Current, 8.3ms Single Half Sine -Wave Super Imposed On Rated Load (JEDEC Method)	I _{FSM}	500		A
Current Squared time (1ms < t < 10ms)	I ² t	500		A ² s
Dielectric Strength	V _{dis}	2000		V
Mounting Torque	TOR	0.8		N.m
Maximum Forward Voltage Drop Per Element At 17.5A Peak	V _F	1.05	1.1	V
Maximum Reverse Current At Rated DC Blocking Voltage Per Element @T _A =25°C	I _R	10	100	μA
Typical Thermal Resistance (Note 1)	R _{θJA}	Max: 0.7		°C/W
Operating Temperature Range	T _J	-55 to +150		°C
Storage Temperature Range	T _{STG}	-55 to +150		°C

Notes: 1.Thermal Resistance Junction to case.
 2.Company reserves the right to improve product design , functions and reliability without notice.

Rating and Characteristics Curves (SC50VB80-G Thru. SC50VB160-G)

Fig.1 - De-rating Current Output Rectified Current

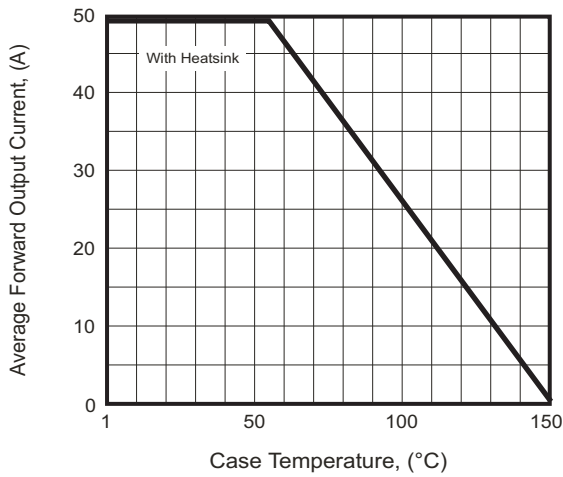


Fig.2 - Typical Forward Characteristics

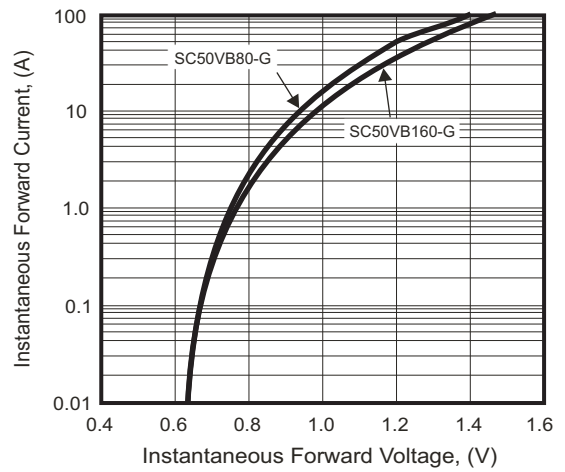


Fig.3 - Maximum Forward Surge Current

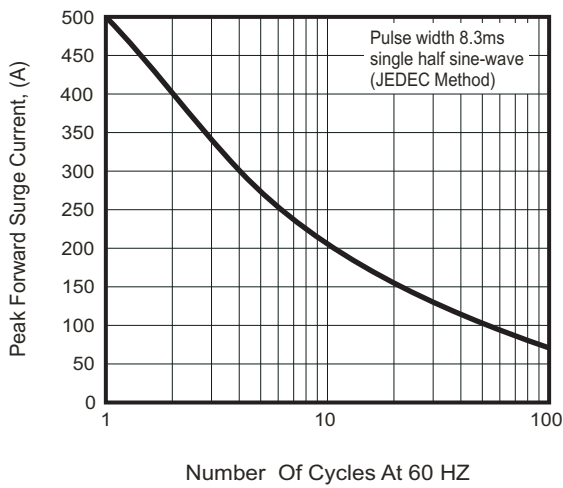
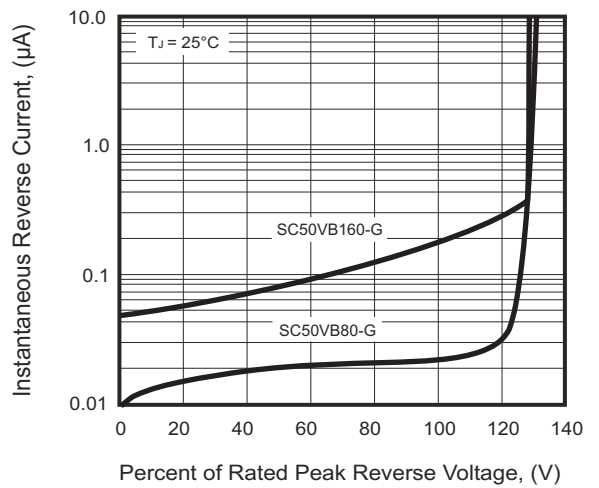
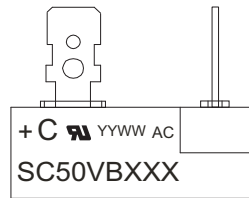


Fig.4 - Typical Reverse Characteristics



Marking Code

Part Number	Marking code
SC50VB80-G	SC50VB80
SC50VB160-G	SC50VB160



C = Compchip Logo

YY WW

↓ Weeks of the year
 ↘ A.D. year latter two figures

XXX = Product type marking code

Standard Packaging

Case Type	BULK PACK	
	BOX (pcs)	CARTON (pcs)
SCVB	25	100