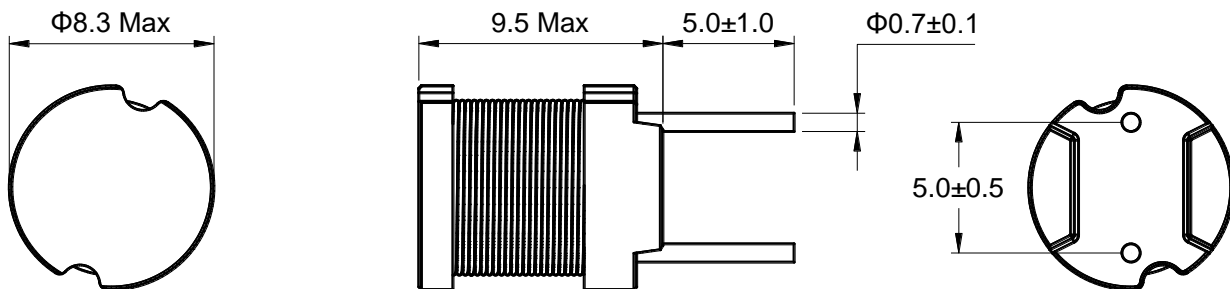


Outline: 产品概要

- High reliability, high consistency inductance.
高可靠性，电感值一致性好。
- High saturation current
饱和电流高。
- Lead free product, RoHS compliant.
无铅产品，符合 RoHS 指令。
- Widely used in power supply, DC-DC converter, computer and peripherals, air-condition, home electric appliance, and etc.
适用于电源，DC-DC 转换器，电脑及其外围设备，空调，家用电器等。
- Operating temperature : $-40^{\circ}\text{C} \sim +125^{\circ}\text{C}$
(Including coil's temperature rise)
工作温度： $-40^{\circ}\text{C} \sim +125^{\circ}\text{C}$ (包含线圈发热)

1 Appearance and dimensions (mm) 外形尺寸

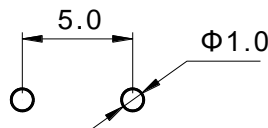


2 Marking 印字标识

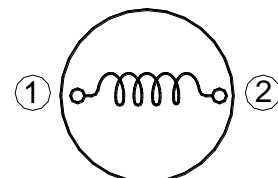


※ Marking is available if needed.
如果需要，产品可印字。

3 Reference hole pattern (mm) 参考焊孔尺寸



4 Schematic 原理图



5 Electrical characteristics

电气特性

Part No. 型号	Inductance (μH) 电感值 ※1 ±10%	D.C.R. (mΩ) 直流电阻		Saturation current (A) 饱和电流 ※2		Temperature rise current (A) 温升电流 ※3
		Typical	Max	Typical	Max	Typical
PKS0809-100K	10.0	21.4	25.7	5.20	4.16	4.83
PKS0809-120K	12.0	24.6	29.5	4.80	3.84	4.44
PKS0809-150K	15.0	31.2	37.4	4.30	3.44	4.03
PKS0809-180K	18.0	34.9	41.9	4.10	3.28	3.67
PKS0809-220K	22.0	40.5	48.5	3.50	2.80	3.41
PKS0809-270K	27.0	46.1	55.3	3.15	2.52	3.24
PKS0809-330K	33.0	60.8	72.9	2.80	2.24	2.66
PKS0809-390K	39.0	67.3	80.7	2.60	2.08	2.54
PKS0809-470K	47.0	89.3	107	2.30	1.84	2.19
PKS0809-560K	56.0	110	132	2.10	1.68	1.98
PKS0809-680K	68.0	126	150	1.90	1.52	1.85
PKS0809-820K	82.0	145	174	1.80	1.44	1.72
PKS0809-101K	100	171	205	1.58	1.26	1.59
PKS0809-121K	120	217	260	1.46	1.17	1.50
PKS0809-151K	150	250	300	1.30	1.04	1.46
PKS0809-181K	180	284	340	1.22	0.98	1.37
PKS0809-221K	220	394	470	1.05	0.84	1.17
PKS0809-271K	270	487	585	0.97	0.78	1.05
PKS0809-331K	330	566	680	0.90	0.72	0.97
PKS0809-391K	390	659	790	0.82	0.66	0.90
PKS0809-471K	470	826	990	0.74	0.59	0.81
PKS0809-561K	560	940	1,130	0.69	0.55	0.76
PKS0809-681K	680	1,130	1,350	0.62	0.50	0.69
PKS0809-821K	820	1,340	1,610	0.55	0.44	0.63
PKS0809-102K	1,000	1,680	2,010	0.52	0.42	0.56

■ All data is tested based on 25°C ambient temperature.

所有数据基于环境温度 25°C 条件下测试。

※1 Inductance measure condition at 1kHz,0.25V.

电感测试条件为 1kHz,0.25V。

※2 Saturation current: the value of DC current when the inductance decrease 20% of its initial value.

饱和电流: 电感值下降其初始值的 20% 时所加载的直流电流值。

※3 Temperature rise current: the actual value of DC current when the temperature rise is $\Delta T40^{\circ}\text{C}$ ($T_a=25^{\circ}\text{C}$).

温升电流: 使产品温度上升到 $\Delta T40^{\circ}\text{C}$ 时所加载的实际直流电流值 ($T_a=25^{\circ}\text{C}$)。

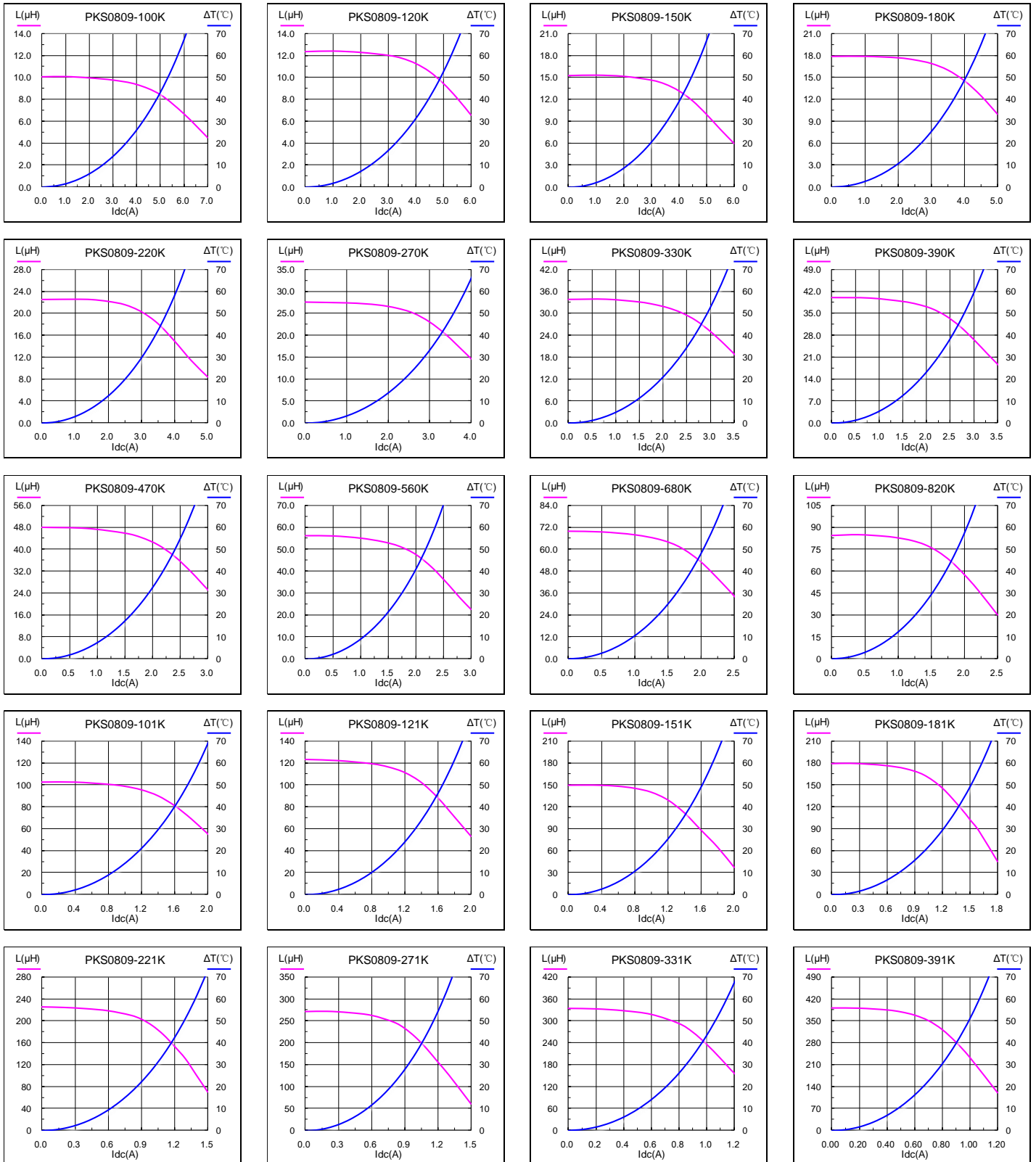
※ Special remind: Circuit design, component placement, PWB size and thickness, cooling system and etc.

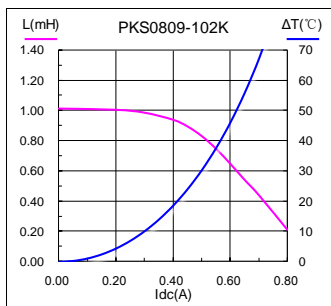
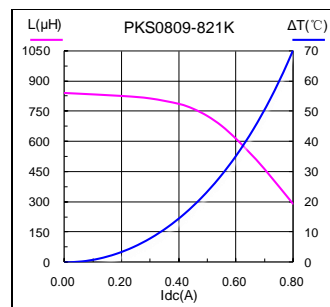
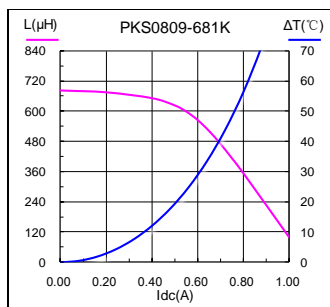
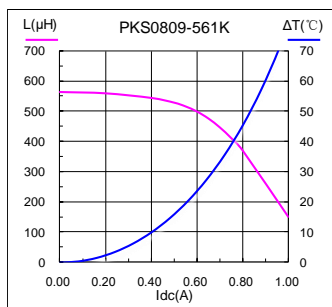
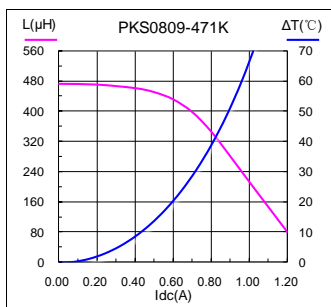
all will affect the product temperature. Please verify the product temperature in the final application.

特别提醒: 线路设计, 组件布局, 印刷线路板(PWB)尺寸及厚度, 散热系统等均会影响产品温度。

请务必在最终应用时, 验证产品发热状况。

6 Saturation current VS temperature rise current curve 饱和电流 VS 温升电流曲线



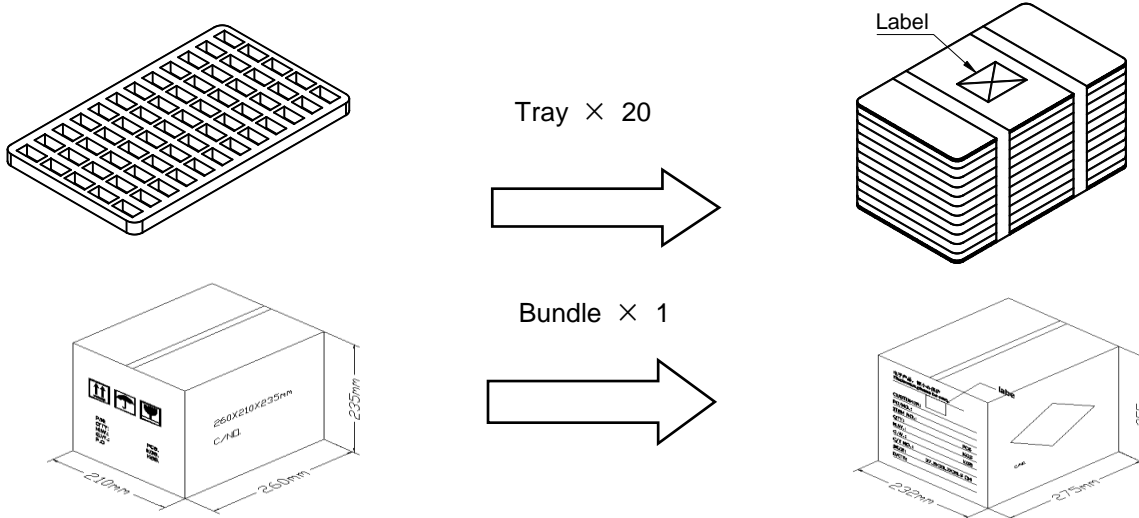


7 Packing specification

包装规格

7.1 Packing

包装



7.2 Carton dimensions and packing quantity

包装箱尺寸和包装数量

■ Inner Carton: 260×210×235mm
内包装盒

■ Out Carton : 275×232×255mm
外包装箱

Product Series 产品系列	Quantity / Tray 数量 / 盘	Inner Carton Quantity 内盒 包装数量	Out Carton Quantity 外箱 包装总数量
PKS0809	140pcs	(140×20) = 2800pcs	(2800×1) = 2800pcs

7.3 Label making

标签标识

The following items will be marked on the bag of product label and shipping label.

以下项目将明确标识于产品包装袋标签以及运输标签上。

Production Label 产品标签
■ Part No. 产品型号
■ Electrical Information 产品电性信息
■ Quantity 数量
■ Packing No. 包装流水号

Shipping Label 运输标签
■ Customer Name 客户名称
■ Customer Part No. 客户型号
■ Supplier Part No. 供应商型号
■ Supplier Name 供应商名称
■ Country of origin 产品产地