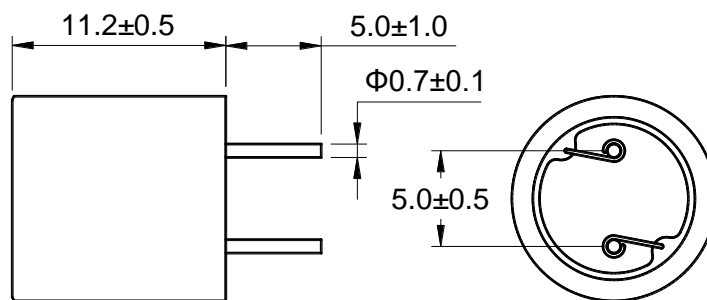
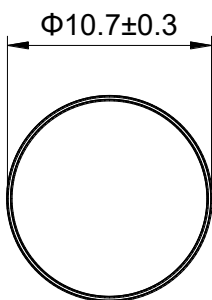


Outline: 产品概要

- Magnetically shielded construction, high reliability.
磁屏蔽结构，高可靠性。
- Small size, high saturation current.
小尺寸，高饱和电流。
- Most suitable for digital power amplifier.
最适合数字功放。
- Lead free product, RoHS compliant.
无铅产品，符合 RoHS 指令。
- Widely used in AV amplifier, mini audio, various power supply, and etc.
适用于 AV 功放，迷你音响，各种电源等。
- Operating temperature : $-40^{\circ}\text{C} \sim +125^{\circ}\text{C}$
(Including coil's temperature rise)
工作温度: $-40^{\circ}\text{C} \sim +125^{\circ}\text{C}$ (包含线圈发热)

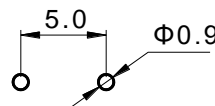
1 Appearance and dimensions (mm) 外形尺寸



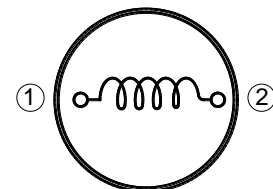
2 Marking 印字标识



3 Reference hole pattern (mm) 参考焊孔尺寸



4 Schematic 原理图



※ Marking is available if needed.
如果需要，产品可印字。

5 Electrical characteristics

电气特性

Part No. 型号	Inductance (μH) 电感值 ※1 ±20%	D.C.R. (mΩ) 直流电阻		Saturation current (A) 饱和电流 ※2		Temperature rise current (A) 温升电流 ※3
		Typical	Max	Typical	Max	Typical
PRS1011-4R7M	4.70	15.0	18.0	12.0	9.60	5.80
PRS1011-6R8M	6.80	18.5	22.0	10.3	8.24	5.30
PRS1011-100M	10.0	22.0	26.0	8.50	6.80	4.80
PRS1011-120M	12.0	26.0	31.0	7.30	5.84	4.40
PRS1011-150M	15.0	33.5	40.0	6.70	5.36	3.90
PRS1011-180M	18.0	46.0	55.0	6.10	4.88	3.30
PRS1011-220M	22.0	50.0	60.0	5.70	4.56	3.20
PRS1011-270M	27.0	74.4	89.3	4.90	3.92	2.60
PRS1011-330M	33.0	78.6	94.3	4.70	3.76	2.55
PRS1011-390M	39.0	86.6	104	4.40	3.52	2.40
PRS1011-470M	47.0	98.5	118	3.90	3.12	2.30
PRS1011-560M	56.0	110	132	3.60	2.88	2.20
PRS1011-680M	68.0	143	172	3.30	2.64	1.90
PRS1011-820M	82.0	177	212	3.10	2.48	1.70
PRS1011-101M	100	198	238	2.75	2.20	1.60

■ All data is tested based on 25°C ambient temperature.
所有数据基于环境温度 25°C 条件下测试。

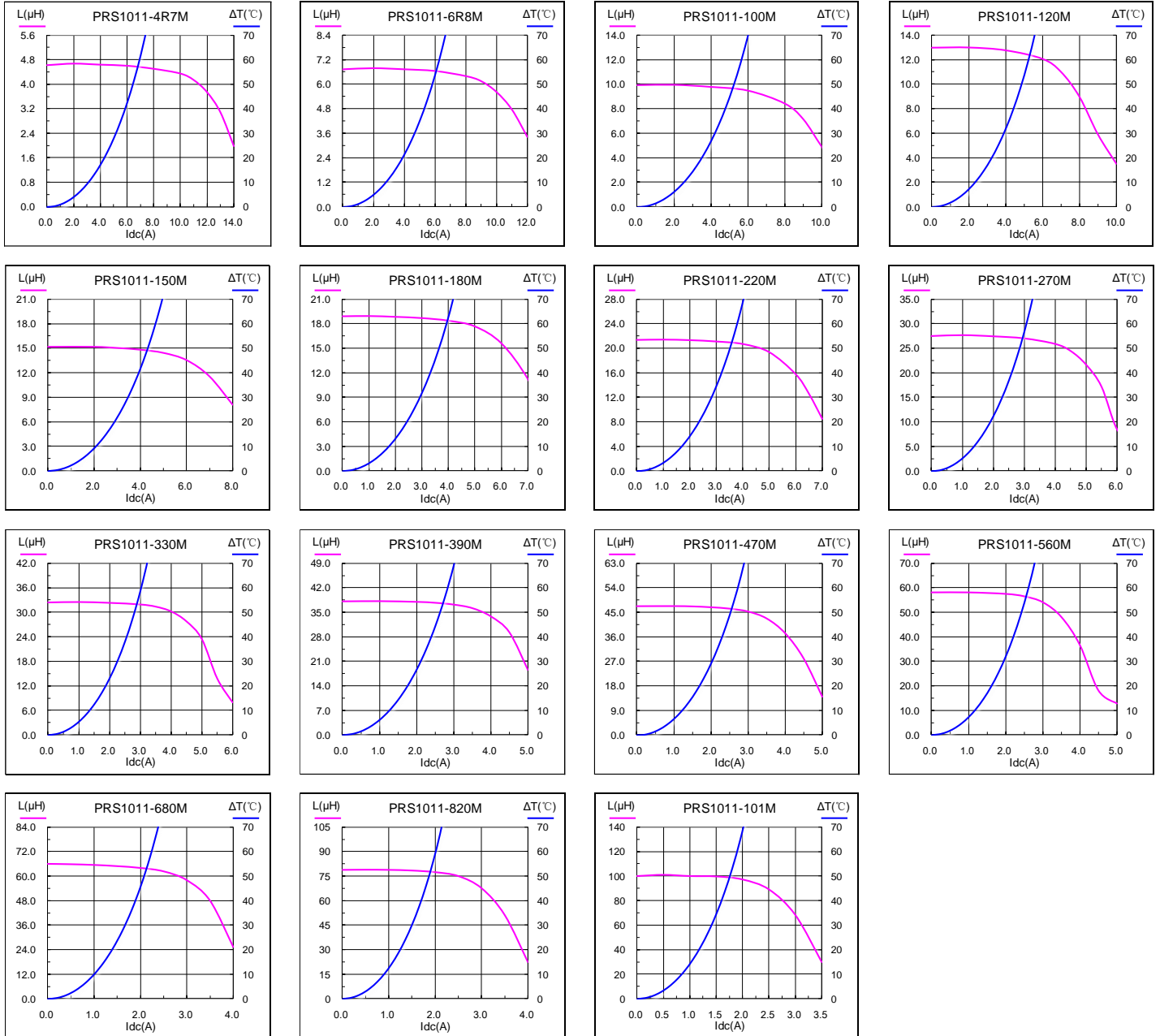
※1 Inductance measure condition at 1kHz,0.25V.
电感测试条件为 1kHz,0.25V。

※2 Saturation current: the value of DC current when the inductance decrease 20% of its initial value.
饱和电流: 电感值下降其初始值的 20% 时所加载的直流电流值。

※3 Temperature rise current: the actual value of DC current when the temperature rise is $\Delta T 40^{\circ}\text{C}$ ($T_a=25^{\circ}\text{C}$).
温升电流: 使产品温度上升到 $\Delta T 40^{\circ}\text{C}$ 时所加载的实际直流电流值 ($T_a=25^{\circ}\text{C}$)。

※ Special remind: Circuit design, component placement, PWB size and thickness, cooling system and etc. all will affect the product temperature. Please verify the product temperature in the final application.
特别提醒: 线路设计, 组件布局, 印刷线路板(PWB)尺寸及厚度, 散热系统等均会影响产品温度。
请务必在最终应用时, 验证产品发热状况。

6 Saturation current VS temperature rise current curve 饱和电流 VS 温升电流曲线

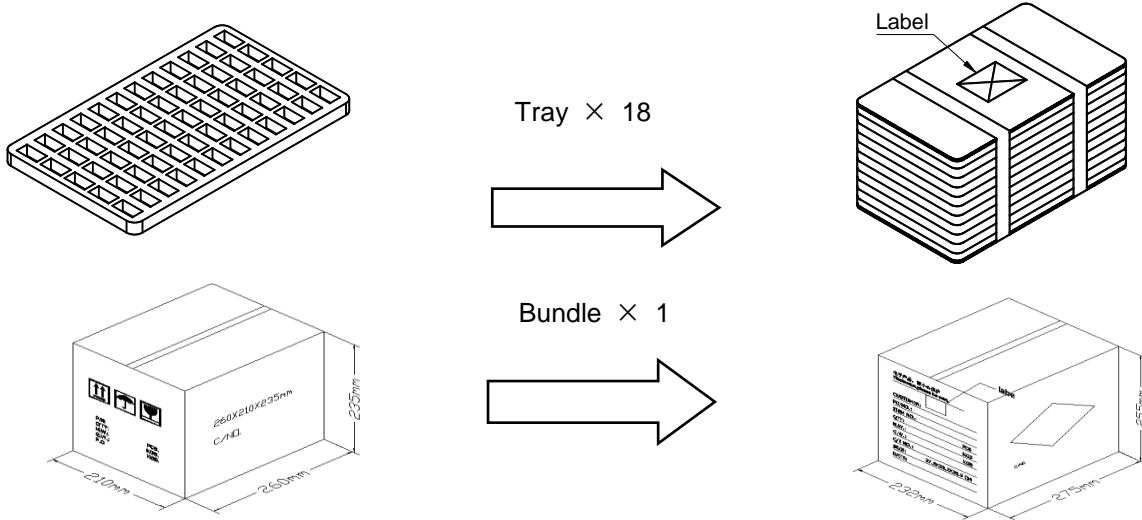


7 Packing specification

包装规格

7.1 Packing

包装



7.2 Carton dimensions and packing quantity

包装箱尺寸和包装数量

■ Inner Carton: 260×210×235mm
内包装箱

■ Out Carton : 275×232×255mm
外包装箱

Product Series 产品系列	Quantity / Tray 数量 / 盘	Inner Carton Quantity 内盒 包装数量	Out Carton Quantity 外箱 包装总数量
PKS1010	120pcs	(120×18) = 2160pcs	(2160×1) = 2160pcs

7.3 Label making

标签标识

The following items will be marked on the bag of product label and shipping label.

以下项目将明确标识于产品包装袋标签以及运输标签上。

Production Label 产品标签
■ Part No. 产品型号
■ Electrical Information 产品电性信息
■ Quantity 数量
■ Packing No. 包装流水号

Shipping Label 运输标签
■ Customer Name 客户名称
■ Customer Part No. 客户型号
■ Supplier Part No. 供应商型号
■ Supplier Name 供应商名称
■ Country of origin 产品产地