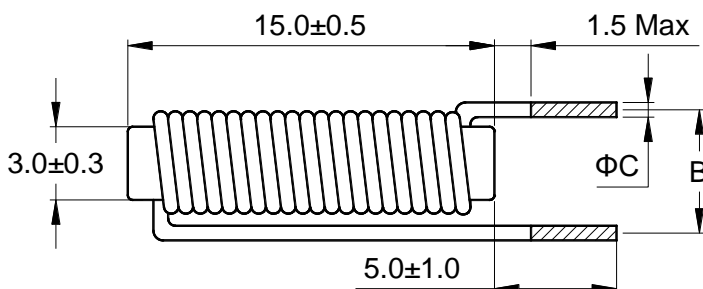




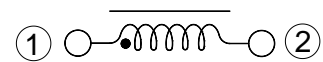
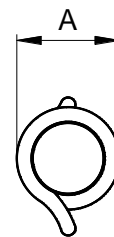
Outline: 产品概要

- Use ferrite core, high frequency.
铁氧体磁芯，工作频率高。
- Low DC resistance, high saturation current.
低直流电阻，高饱和电流。
- Lead free product, RoHS compliant.
无铅产品，符合 RoHS 指令。
- Widely used in switching power supply, power amplifier, output antenna, filter, display, UPS, and etc.
广泛应用于开关电源，功率放大器，输出天线，滤波器，显示器，不间断电源等。
- Operating temperature : $-40^{\circ}\text{C} \sim +125^{\circ}\text{C}$
(Including coil's temperature rise)
工作温度： $-40^{\circ}\text{C} \sim +125^{\circ}\text{C}$ (包含线圈发热)

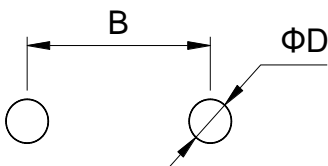
1 Appearance and dimensions (mm) 外形尺寸



2 Schematic 原理图



3 Reference hole pattern (mm) 参考焊孔尺寸



| Part No. 型号 | A | B | C | D |
|----------------|------|-----------|------------|------|
| | Max | ± 1.0 | ± 0.15 | Ref. |
| 2R2 | 5.20 | 5.50 | 0.70 | 1.10 |
| 3R3 | 4.90 | 5.50 | 0.65 | 1.10 |
| 4R7 | 4.80 | 5.00 | 0.60 | 1.00 |
| 6R8 | 4.60 | 5.00 | 0.45 | 0.90 |
| 100 | 4.30 | 5.50 | 0.40 | 0.80 |

4 Electrical characteristics

电气特性

| Part No. 型号 | Inductance (μH) 电感值 ※1 ±20% | D.C.R. (mΩ) 直流电阻 | | Saturation current (A) 饱和电流 ※2 Typical | Temperature rise current (A) 温升电流 ※3 Typical |
|----------------|-----------------------------------|---------------------|------|---|---|
| | | Typical | Max | | |
| RKR0315-2R2M | 2.20 | 7.46 | 9.70 | 6.50 | 9.30 |
| RKR0315-3R3M | 3.30 | 10.1 | 13.2 | 5.50 | 8.00 |
| RKR0315-4R7M | 4.70 | 14.8 | 19.2 | 4.00 | 6.60 |
| RKR0315-6R8M | 6.80 | 28.6 | 37.1 | 3.50 | 4.70 |
| RKR0315-100M | 10.0 | 42.9 | 55.8 | 3.20 | 3.90 |

- All data is tested based on 25°C ambient temperature.
所有数据基于环境温度 25°C条件下测试。

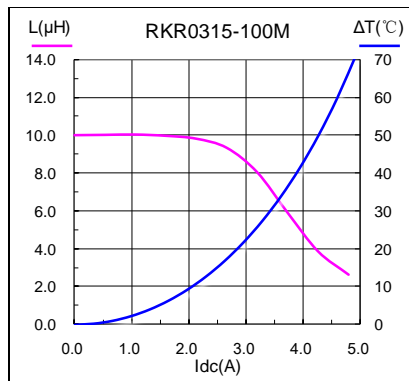
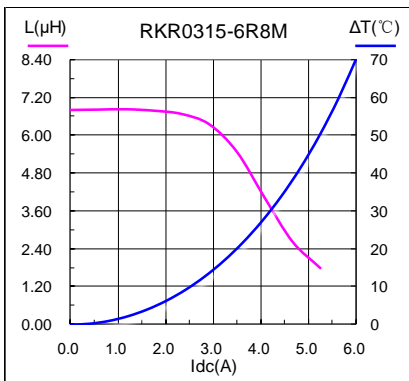
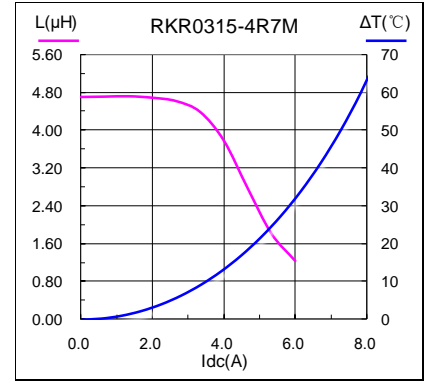
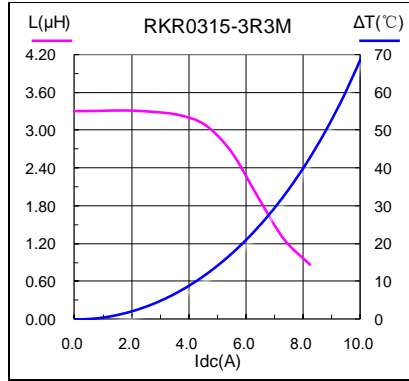
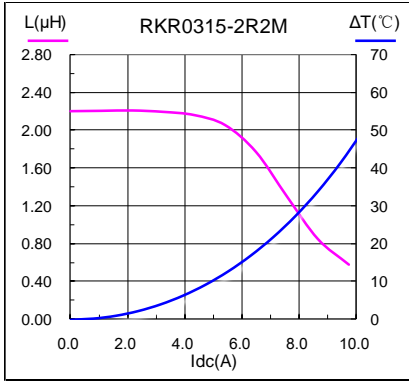
※1 Inductance measure condition at 1kHz, 0.25V.
电感测试条件为 1kHz, 0.25V。

※2 Saturation current : the actual value of DC current when the inductance decrease 20% of its initial value.
饱和电流 : 电感值下降其初始值的 20%时所加载的实际直流电流值。

※3 Temperature rise current : the actual value of DC current when the temperature rise is ΔT40°C(Ta=25°C).
温升电流 : 使产品温度上升到 ΔT40°C时所加载的实际直流电流值(Ta=25°C)。

※ Special remind : Circuit design, component placement, PWB size and thickness, cooling system and etc. all will affect the product temperature. Please verify the product temperature in the final application.
特别提醒 : 线路设计, 组件布局, 印刷线路板(PWB)尺寸及厚度, 散热系统等均会影响产品温度。
请务必在最终应用时, 验证产品发热状况。

**5 Saturation current VS temperature rise current curve
饱和电流 VS 温升电流曲线**

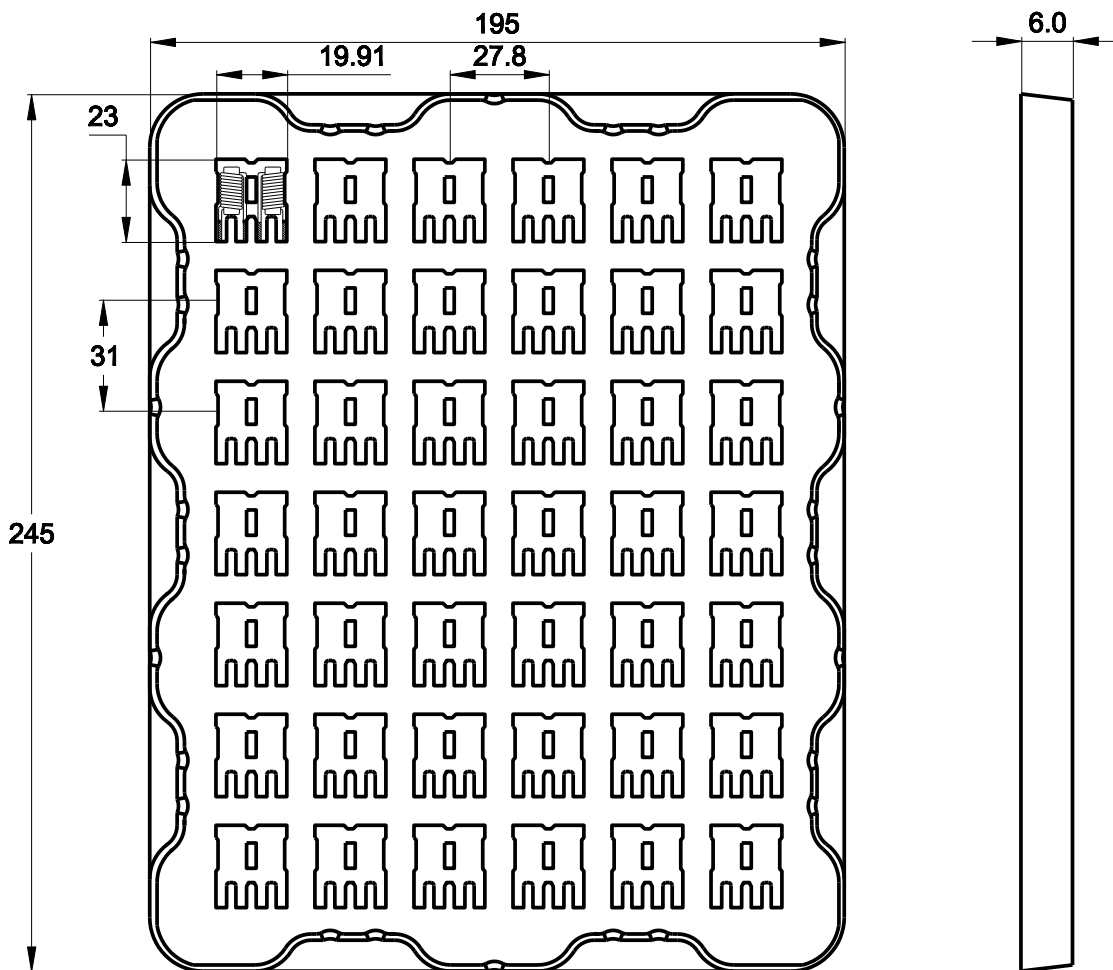


6 Packing specification

包装规格

6.1 Plastic tray dimensions (mm)

吸塑盘尺寸

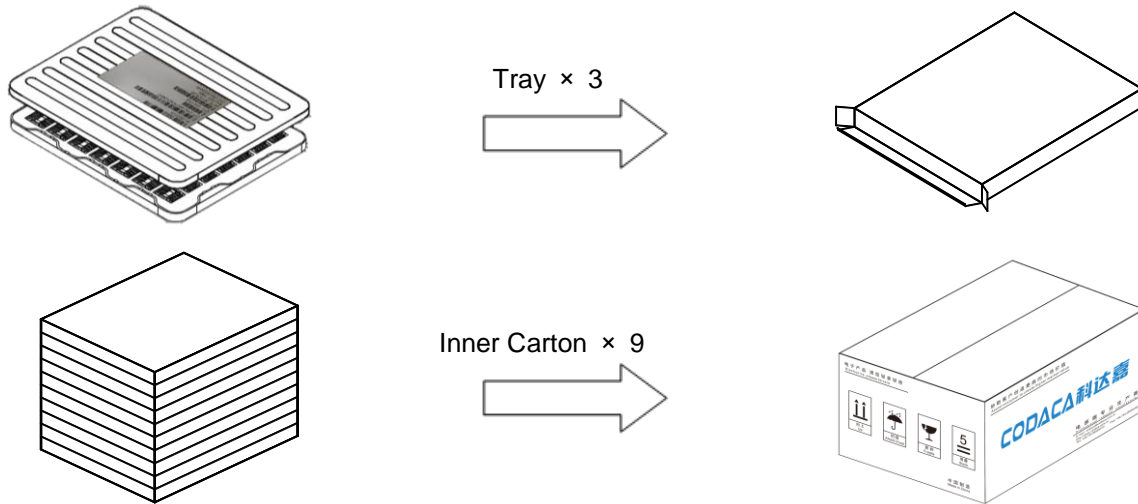


7 Packing specification

包装规格

7.1 Packing

包装



7.2 Carton dimensions and packing quantity

包装箱尺寸和包装数量

■ Inner Carton : 265×205×25mm
内包装盒

■ Out Carton : 275×232×255mm
外包装箱

| Product Series 产品系列 | Quantity / tray 数量 / 盘 | Inner Carton Quantity 内盒 包装数量 | Out Carton Quantity 外箱 包装总数量 |
|------------------------|---------------------------|----------------------------------|---------------------------------|
| RKR0315 | 84pcs | (84×3) = 252pcs | (252×9) = 2268pcs |

7.3 Label making

标签标识

The following items will be marked on the tray of product label and shipping label.
以下项目将明确标识于产品吸塑盘标签以及运输标签上。

| Production Label 产品标签 |
|------------------------------------|
| ■ Part No. 产品型号 |
| ■ Electrical Information 产品电性信息 |
| ■ Quantity 数量 |
| ■ Packing No. 包装流水号 |

| Shipping Label 运输标签 |
|------------------------------|
| ■ Customer Name 客户名称 |
| ■ Customer Part No. 客户型号 |
| ■ Supplier Part No. 供应商型号 |
| ■ Supplier Name 供应商名称 |
| ■ Country of origin 产品产地 |