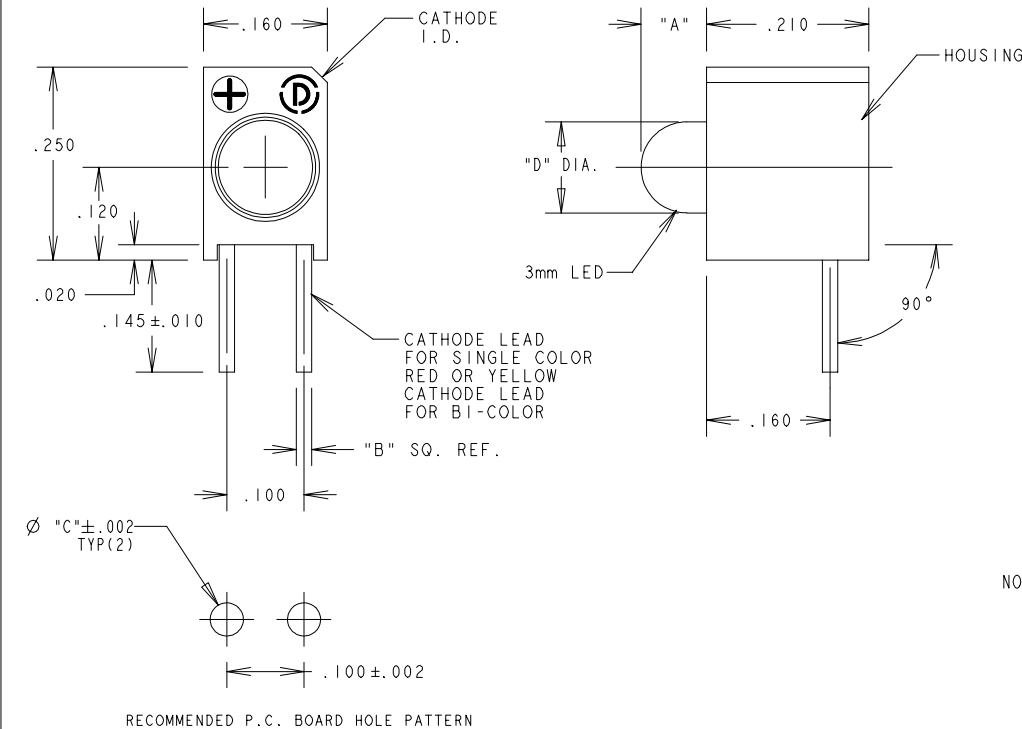


PART NUMBER	OPERATING CHARACTERISTICS AT T _a = 25°C									TEST CONDITIONS	
	FORWARD VOLTAGE/CURRENT			REVERSE VOLTAGE (V)	PEAK WAVELENGTH (nm)			LUMINOUS INTENSITY (mcd)			
	MIN	TYP	MAX		MIN	TYP	MAX	MIN	TYP		MAX
551-0209		2.1 V	3.0 V	V _R = 3 V MIN @ 10μA		563		5.6	16.0		I _f = 10 mA
551-0309		2.1 V	3.0 V	V _R = 3 V MIN @ 10μA		585		2.2	6.3		I _f = 10 mA
551-0409		2.0 V	3.0 V	V _R = 3 V MIN @ 10μA		650		3.6	10		I _f = 10 mA
551-0509	10 mA	2.0 mA		V _R = 5 V MIN @ 100μA		635		8.7	29		V _f = 5 V
551-0609	10 mA	2.0 mA		V _R = 5 V MIN @ 100μA		565		5.6	19		V _f = 5 V
551-0709	10 mA	2.0 mA		V _R = 5 V MIN @ 100μA		585		3.7	12.6		V _f = 5 V
* 551-0809	3.5 V	4.2 V		V = 5 V MIN @ 10 mA		428		6.3		20	I _f = 10 mA
551-1109	1.7 V	2.2 V		V _R = 5 V MIN @ 50μA		635	1.0	1.6			I _f = 2 mA
551-1209	1.8 V	2.7 V		V _R = 5 V MIN @ 50μA		585	1.0	1.6			I _f = 2 mA
551-1309	1.9 V	2.2 V		V _R = 5 V MIN @ 50μA		565	1.0	1.6			I _f = 2 mA
551-1409	1.6 V	1.8 V		V _R = 5 V MIN @ 100μA		645	2	3			I _f = 1 mA
551-1509	2.1 V	2.8 V		V = 5 V MIN @ 100μA		565	32	50			I _f = 10 mA
551-1609	2.1 V	2.8 V		V = 5 V MIN @ 100μA		585	10		50		I _f = 10 mA
551-1709	2.0 V	2.8 V		V = 5 V MIN @ 100μA		635	8.7	29			I _f = 10 mA
551-1809	1.8 V	2.4 V		V = 4 V MIN @ 100μA		660	8.7	48.0			I _f = 20 mA
551-3009	2.0/2.1	2.8/2.8		N/A		635/565	2.5/3.7	4.7/10			I _f = 10 mA
551-3109	2.1/2.1	2.8/2.8		N/A		585/565	2.5/2.5	4.3/6.3			I _f = 10 mA
551-3209	2.0/2.1	2.8/2.8		N/A		630/585	1.7/1.7	5.6/5.6			I _f = 20 mA

REV.	ECN NO.	REVISIONS	DRN.	CKD.	APP.	DATE
A	---	NEW RELEASE	DC	---	N.O.	6-28-95
B	---	ADDED 551-3009 & 551-3109	TC	---	N.O.	12-17-96
C	---	ADDED 551-0809	TC	DC	N.O.	8-20-99
D	---	REVISED LED SPECS FOR 551-0509, -0609, 0709, -1109, -1209, -1309, -1509, -1609, -1709 AND -3009.	TC	DC	N.O.	9-19-00
E	---	ADDED 551-3209 AND TITLE.	DC			



PART NUMBER	LED COLOR	"A" DIMENSION	"B" DIMENSION	"C" DIMENSION	"D" DIMENSION
551-0209	GREEN DIFFUSED	.095	.020	.043	.122±.008
551-0309	YELLOW DIFFUSED	.095	.020	.043	.122±.008
551-0409	RED DIFFUSED	.095	.020	.043	.122±.008
551-0509	RED DIFF. 5 VOLT	.085	.018	.040	.115±.010
551-0609	GREEN DIFF. 5 VOLT	.085	.018	.040	.115±.010
551-0709	YELLOW DIFF. 5 VOLT	.085	.018	.040	.115±.010
* 551-0809	BLUE NON-TINTED DIFFUSED	.091	.020	.043	.110±.004
551-1109	2 mA RED DIFFUSED	.085	.018	.040	.115±.010
551-1209	2 mA YELLOW DIFFUSED	.085	.018	.040	.115±.010
551-1309	2 mA GREEN DIFFUSED	.085	.018	.040	.115±.010
551-1409	1 mA RED WATER CLEAR	.085	.018	.040	.115±.010
551-1509	GREEN TINTED NON-DIFF.	.085	.018	.040	.115±.010
551-1609	YELLOW TINTED NON-DIFF.	.085	.018	.040	.115±.010
551-1709	RED TINTED NON-DIFF.	.085	.018	.040	.115±.010
551-1809	RED TINTED DIFFUSED	.085	.020	.043	.118±.010
551-3009	RED/GREEN BI-COLOR	.085	.020	.043	.118±.010
551-3109	YELLOW/GREEN BI-COLOR	.085	.020	.043	.118±.010
551-3209	RED/YELLOW BI-COLOR	.085	.020	.043	.118±.010

NOTES:

- DIALIGHT PART NUMBER: 551-XX09
- * ATTENTION: OBSERVE PRECAUTIONS FOR HANDLING ELECTROSTATIC SENSITIVE DEVICES.

THIS DRAWING AND THE CONTENTS HEREIN ARE CONFIDENTIAL AND THE SOLE PROPERTY OF DIALIGHT. REPRODUCTION OF THIS DRAWING OR CONSTRUCTION OF ANY PARTS WITHIN THIS DRAWING ARE FORBIDDEN WITHOUT THE WRITTEN CONSENT OF DIALIGHT.		
SCALE 5:1	DRAWING NUMBER	REV
ALL DIM'S IN: INCHES (MM)	C-15992	E
TOLERANCES: UNLESS OTHERWISE SPECIFIED	TITLE	
FRACTIONS: ±1/64	3mm LED CBI	
DECIMALS (.XX): ±.020	MATERIAL	
DECIMALS (.XXX): ±.015		
ANGLES: ±1°	FINISH:	
FSCM 83330	SHEET OF	FAMILY TABLE: