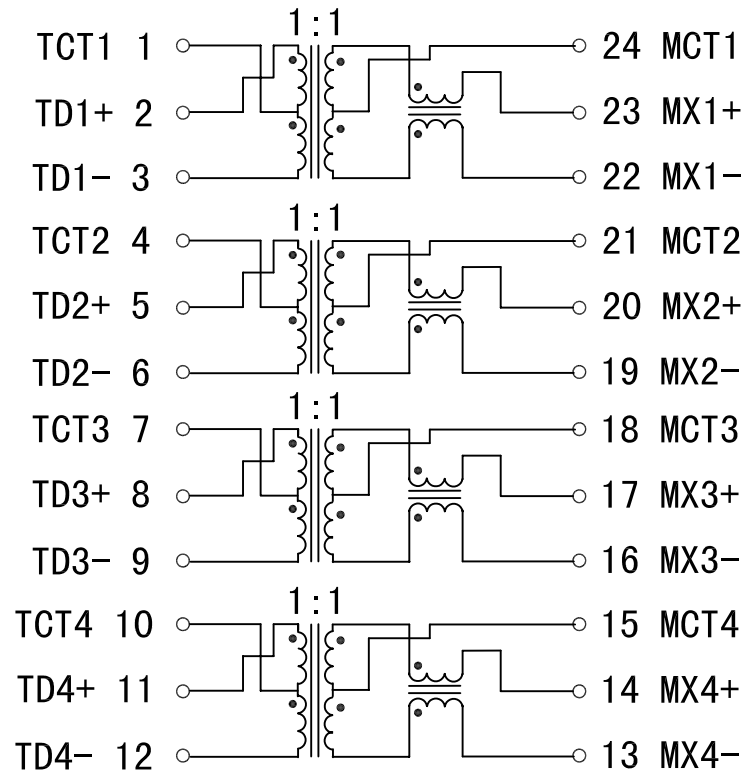


# Schematic:

REV.	ECN NO.	DESCRIPTION	DATE	APPD
A	REL		2010/08/04	



## Electrical Specifications @25°C

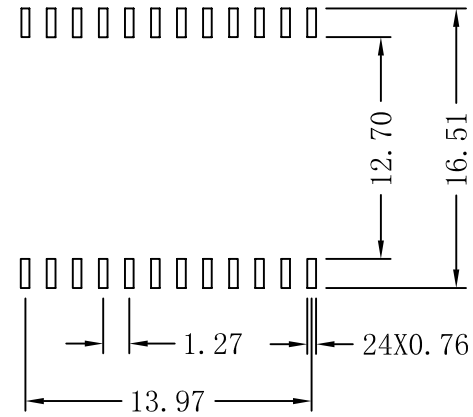
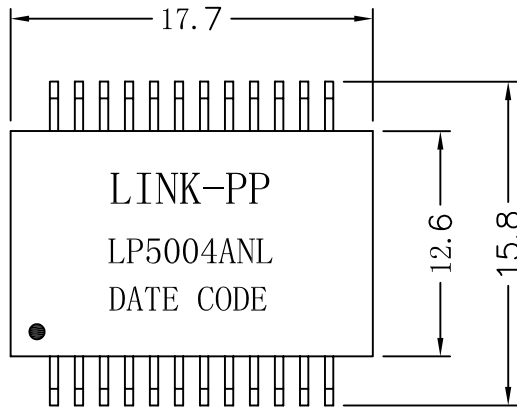
- Insertion Loss:
  - 1-100MHz: -1.0dB MAX
- Return Loss (dB MIN @100Ω):
  - 1-30MHz: -18      40MHz: -18
  - 50MHz: -16      60-80MHz: -12
  - 100MHz: -10
- Crosstalk (dB MIN):
  - 30MHz: -45      60MHz: -40
  - 100MHz: -35
- DCMR (dB MIN):
  - 30MHz: -43      60MHz: -37
  - 100MHz: -33
- Hipot: 1500Vrms MIN
- Operating Temperature: -40°C ~ +85°C



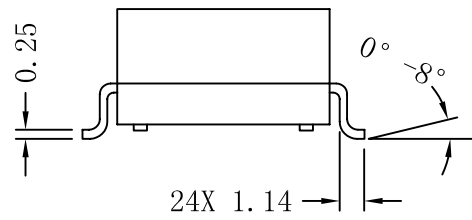
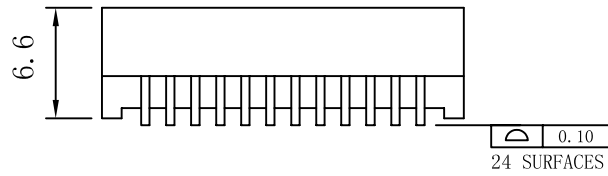
X:X	±0.20	APPD:	LINK-PP INT'L TECHNOLOGY CO., LIMITED	
X:XX	±0.10	CHKD:		
X:XXX	±0.05	DR: TOM	Title: 1000Base-T Magnetic Modules	
ANGLES	±1°	UNIT: mm	PART NO.: LP5004ANL	
	SCALE: 2/1	SHEET: 1/2	REV: A	DWG NO.: LP10080403

# Mechanical :

REV.	ECN NO.	DESCRIPTION	DATE	APPD
A	REL		2010/08/04	



SUGGESTED PAD LAYOUT



## NOTES:

1. Designed to support 1:1 Turns Ratio Transceivers
2. Compliant with IEEE 802.3ab standard for 1000 Base-T.
3. 350uH min OCL with 8mA bias current.
4. RoHS "NL" peak solder rating 260°C ±5°C.

X:X	±0.20	APPD:	LINK-PP INT'L TECHNOLOGY CO., LIMITED	
X:XX	±0.10	CHKD:		
X:XXX	±0.05	DR: TOM	Title: 1000Base-T Magnetic Modules	
ANGLES	±1°	UNIT: mm	PART NO.: LP5004ANL	
	SCALE: 2/1	SHEET: 2/2	REV: A	DWG NO.: LP10080403