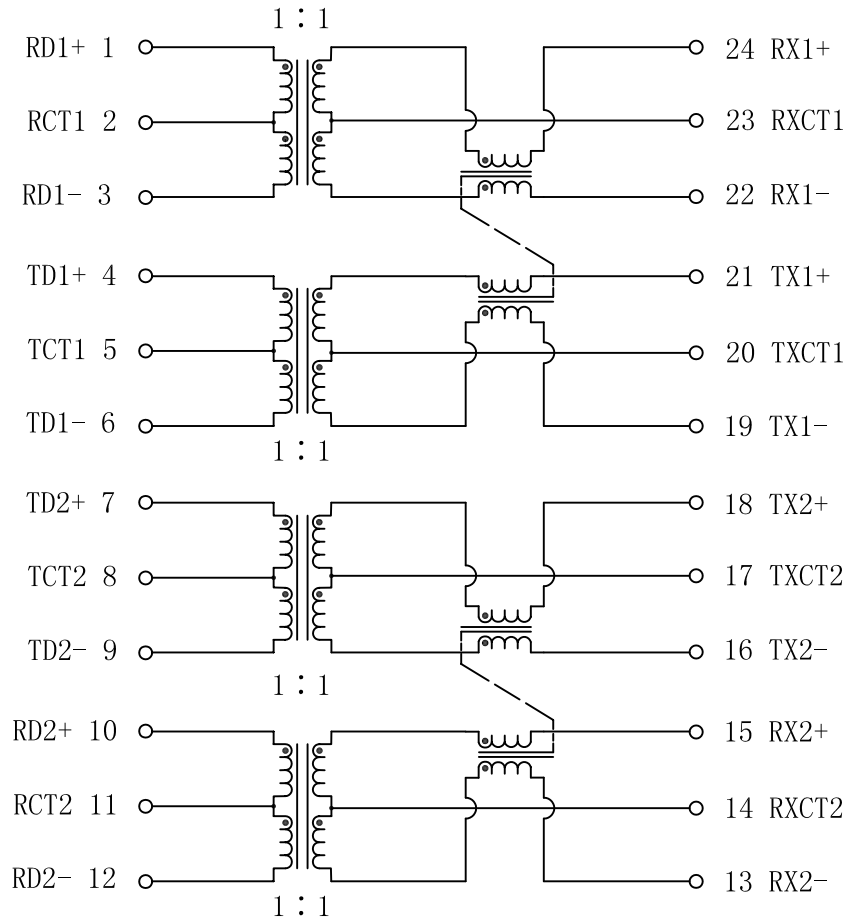


# Schematic:

REV.	ECN NO.	DESCRIPTION	DATE	APPD
A	REL		2011/03/14	



## Electrical Specifications @25°C

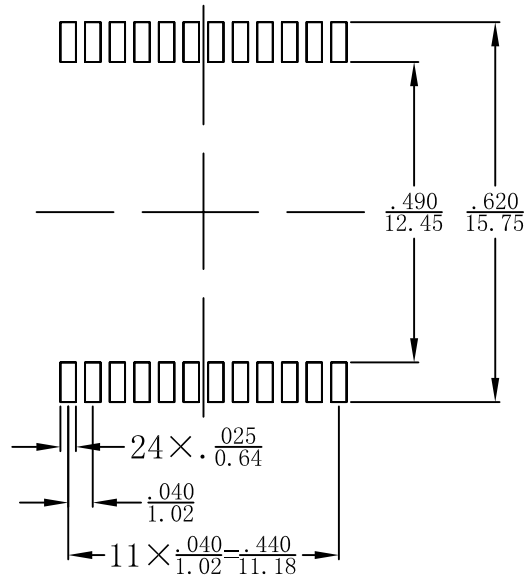
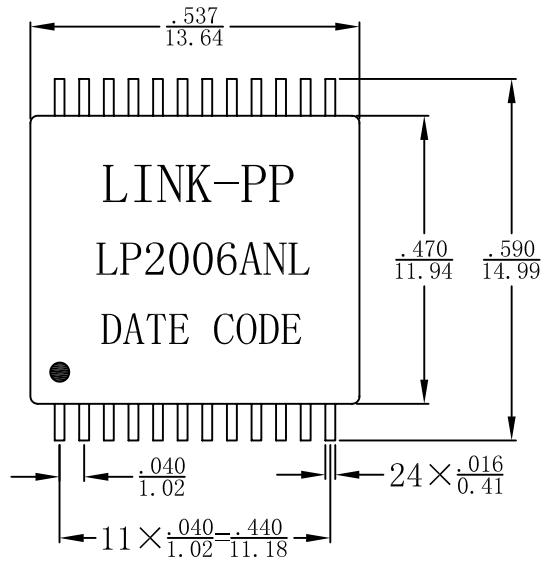
1. OCL: 350uH Min  
@100KHz 0.1V 8mA
2. Insertion Loss:  
1-100MHz:-1.2dB Max
3. Return Loss(dB Min @100Ω):  
1-30MHz:-16      40MHz:-14  
50MHz:-13      60-80MHz:-12
4. Crosstalk(dB Min):  
30MHz:-43      60MHz:-37  
100MHz:-31
5. Differential to Common Mode Rejection:  
30MHz:-43dB Min      60MHz:-37dB Min  
100MHz:-33dB Min
6. Isolation Voltage: 1500Vrms Min
7. Operating Temperature: -40°C ~+85°C.



X:X	±0.20	APPD:	LINK-PP INT'L TECHNOLOGY CO., LIMITED	
X:XX	±0.10	CHKD:	TITLE: 10/100BASE-TX VoIP Magnetics Modules & PoE	
X:XXX	±0.05	DR: TOM	PART NO.: LP2006ANL	
ANGLES	±1°	UNIT: $\frac{\text{Inches}}{\text{mm}}$	DWG NO.: LP11031406	
	SCALE: 2/1	SHEET: 1/2	REV: A	

# Mechanical :

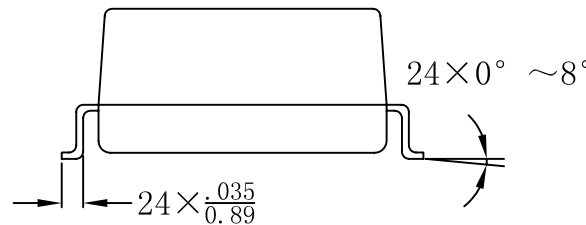
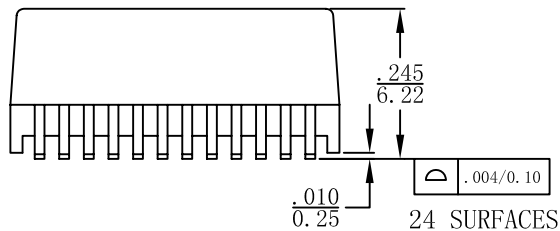
REV.	ECN NO.	DESCRIPTION	DATE	APPD
A	REL		2011/03/14	



SUGGESTED PAD LAYOUT

### NOTES:

1. Designed to support application, such as SOHO (ADSL modems), LAN-on-Motherboard (LOM), hub and Switches.
2. Power over Ethernet (PoE) Magnetics
3. With various Turns Ratios.
4. RoHS "NL" peak solder rating 245°C.



X:X	±0.20	APPD:	LINK-PP INT'L TECHNOLOGY CO., LIMITED	
X:XX	±0.10	CHKD:	TITLE: 10/100BASE-TX VoIP Magnetics Modules & PoE	
X:XXX	±0.05	DR: TOM	PART NO.: LP2006ANL	
ANGLES	±1°	UNIT: $\frac{\text{Inches}}{\text{mm}}$	DWG NO.: LP11031406	
	SCALE: 2/1	SHEET: 2/2	REV: A	