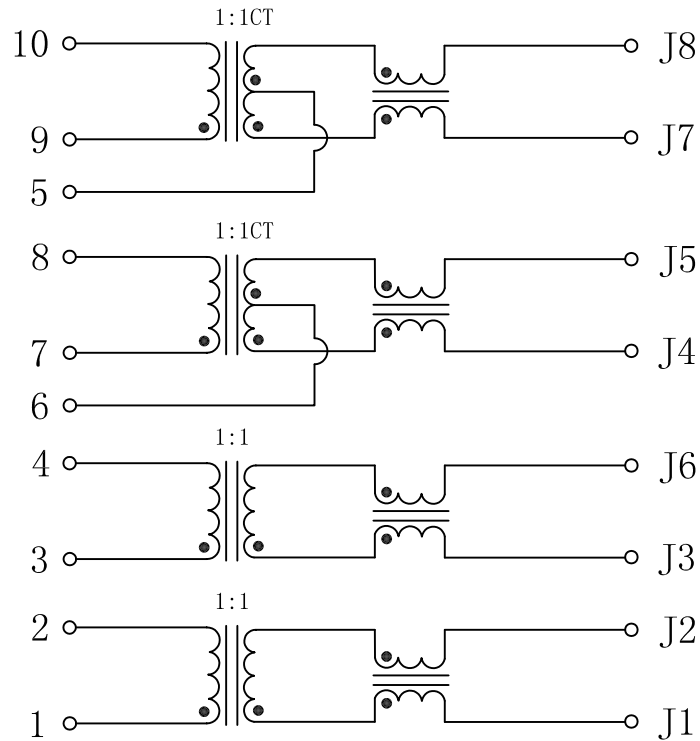


Schematic:

REV.	ECN NO.	DESCRIPTION	DATE	APPD
A	REL		10/11/2009	



ELECTRICAL SPECIFICATIONS @25°C

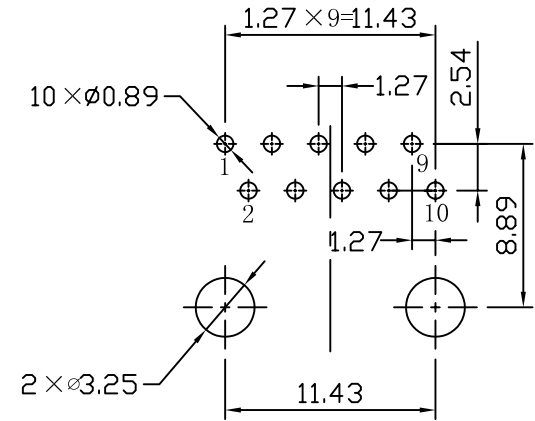
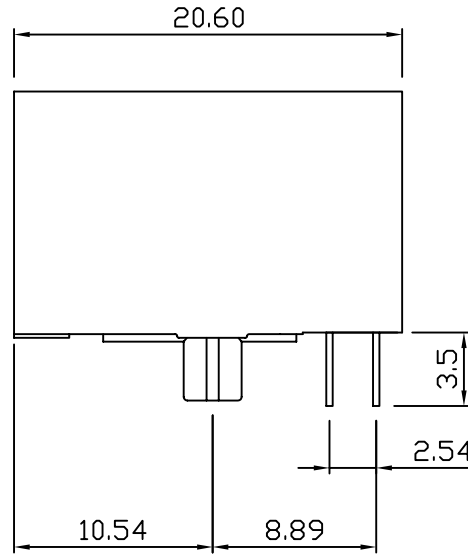
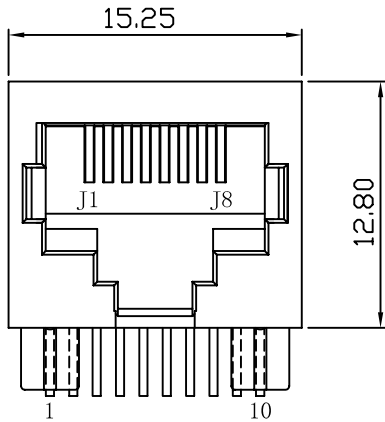
- Turn Ratio($\pm 2\%$):
PRI:SEC=1:1CT
- Inductance OCL:
350uH MIN @ 100KHz, 100mV, 8mA DC
- Insertion Loss:
-1.0dB MAX @ 1-100MHz
- Return Loss:
-18dB MIN @ 1-30MHz
-18dB MIN @ 30-40MHz
-16dB MIN @ 40-50MHz
-12dB MIN @ 50-100MHz
- Cross talk:
-45dB MIN @ 0.3-30MHz
-43dB MIN @ 30-60MHz
-42dB MIN @ 60-100MHz
- Common Mode Rejection:
-43dB MIN @ 1-30MHz
-37dB MIN @ 30-60MHz
-33dB MIN @ 60-125MHz
- Hipot Test: 1500Vrms MIN
- Operating Temperature Range: -40°C TO +85°C.



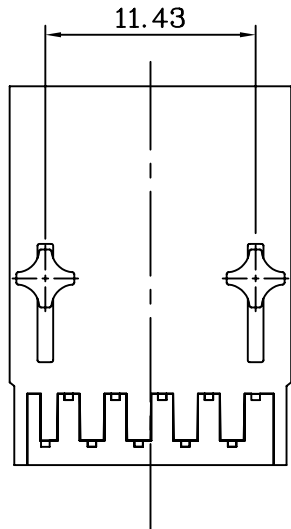
X:X ±0.30	APPD:	LINK-PP INT'L TECHNOLOGY CO., LIMITED		
X:XX ±0.20	CHKD:	TITLE: RJ45 Connector with 1000 Base-T Integrated Magnetics		
X:XXX ±0.05	DR: TOM	PART NO. : LPJG4810NNL		
ANGLES ±1°	UNIT: mm	DWG NO. : LP09111006		
	SCALE: 2/1	SHEET: 1/2	REV: A	

Mechanical:

REV.	ECN NO.	DESCRIPTION	DATE	APPD
A	REL		10/11/2009	



SUGGESTED PCB LAYOUT (TOP VIEW)



NOTES:

1. Designed to support application, such as SOHO (ADSL modems), LAN-on-Motherboard (LOM), hub and Switches.
2. Meets IEEE 802.3 specification
3. Connector Materials:
 Housing: Thermoplastic UL94V-0
 Contact/Shield: Copper alloy
 Shield plating: Nickel
 Contact plating: Gold 6 micro-inches min. In contact area.
4. Wave solder tip temperature: 265°C Max
 Wave solder tip temperature time: 5 Sec Max



X:X ±0.30	APPD:	LINK-PP INT'L TECHNOLOGY CO., LIMITED
X:XX ±0.20	CHKD:	
X:XXX ±0.05	DR: TOM	TITLE: RJ45 Connector with 1000 Base-T Integrated Magnetics
ANGLES ±1°	UNIT: mm	PART NO.: LPJG4810NNL
	SCALE: 2/1	SHEET: 2/2
	REV: A	DWG NO.: LP09111006