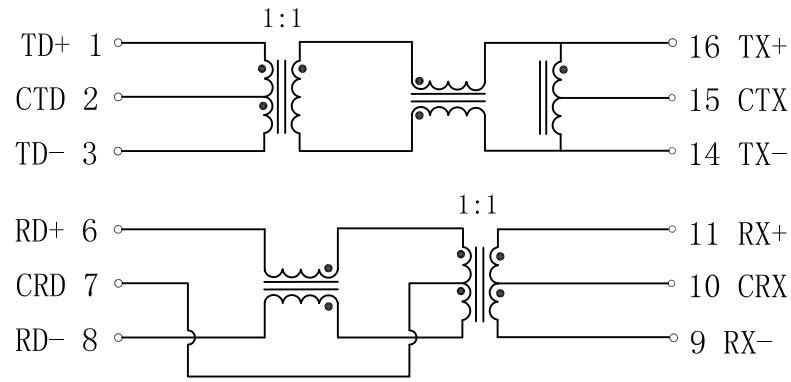


Schematic:

REV.	ECN NO.	DESCRIPTION	DATE	APPD
A	REL		2009/07/27	



Electrical Specification @25°C

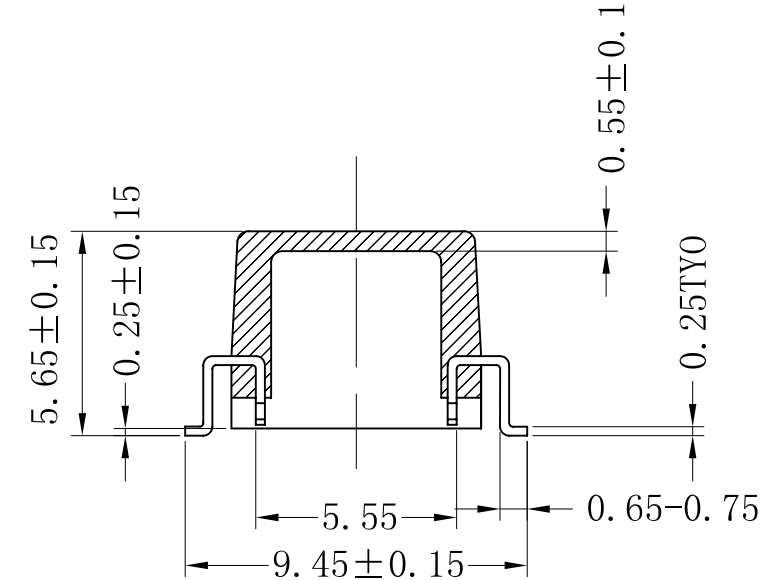
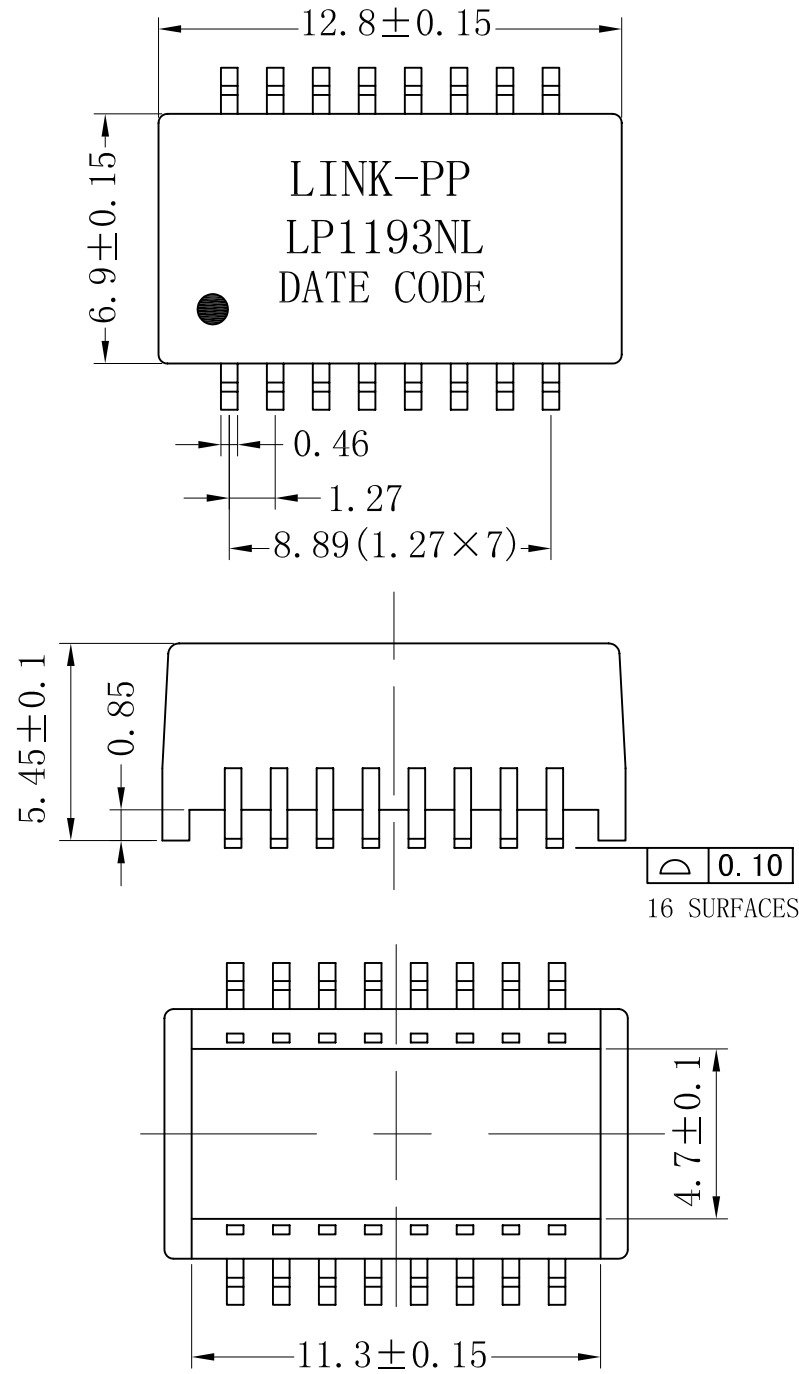
- Inductance (100KHz, 100mV, 8mADC) :
350uH Min, 16-14;11-9, Lp, 0°C to 70°C
- Turns Ratio ($\pm 2\%$) :
(1-3) : (16:14) = 1:1; (6-8) : (11-9) = 1:1
- Insertion Loss:
1-100MHz: -1.0dB Max
- Return Loss (dB Min) :
1-30MHz: -20.5 30-60MHz: -17
60-80MHz: -14 80-100MHz: -12
- Crosstalk:
1-100MHz: -40dB Min
- CMRR (dB Min) :
1-100MHz: -40 100-500MHz: -20.5
- Isolation Voltage: 1500Vrms
- Operating Temperature Range: 0~70°C



X:X	± 0.20	APPD:	LINK-PP INT'L TECHNOLOGY CO., LIMITED	
X:XX	± 0.10	CHKD:	TITLE: 10/100Base-T Single Port Transformer Modules	
X:XXX	± 0.05	DR: TOM	PART NO.: LP1193NL	
ANGLES	$\pm 1^\circ$	UNIT: mm	DWG NO.: LP09072702	
	SCALE: 2/1	SHEET: 1/2	REV: A	

Mechanical :

REV.	ECN NO.	DESCRIPTION	DATE	APPD
A	REL		2009/07/27	



- NOTES:
1. Designed to support application, such as SOHO (ADSL modems), LAN-on-Motherboard (LOM), hub and Switches.
 2. With various Turns Ratios.
 3. RoHS "NLE" peak solder rating 255°C.



X:X	±0.20	APPD:	LINK-PP INT'L TECHNOLOGY CO., LIMITED	
X:XX	±0.10	CHKD:	TITLE: 10/100Base-T Single Port Transformer Modules	
X:XXX	±0.05	DR: TOM	PART NO.: LP1193NL	
ANGLES	±1°	UNIT: mm		
	SCALE: 2/1	SHEET: 2/2	REV: A	DWG NO.: LP09072702