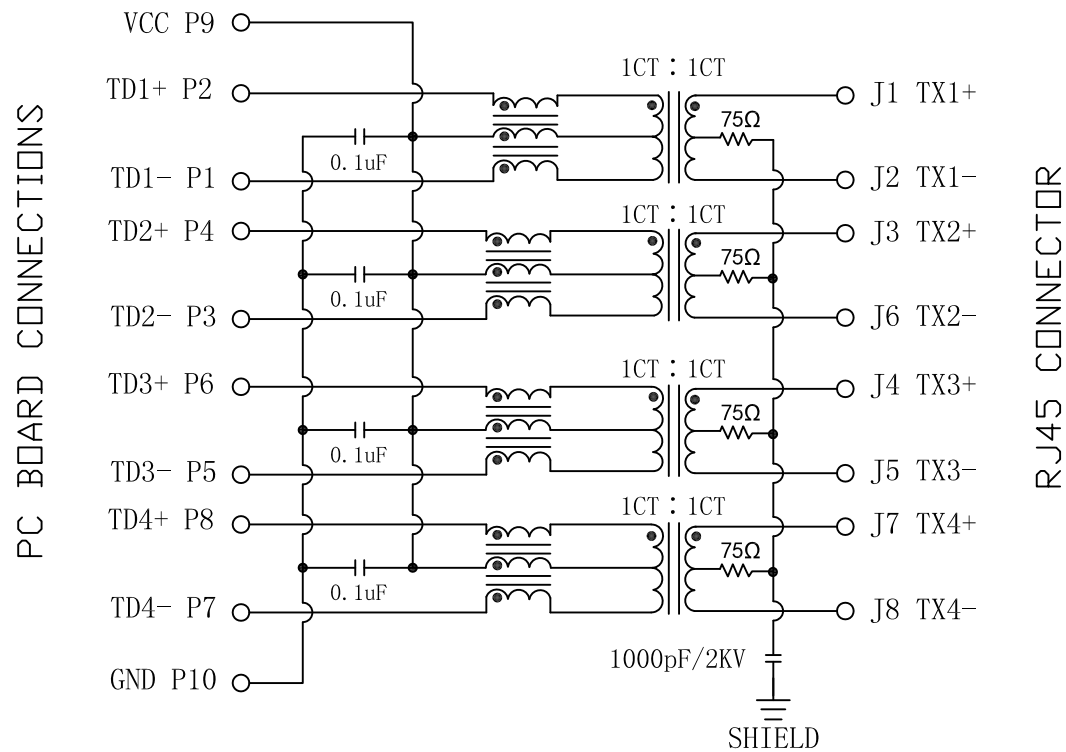


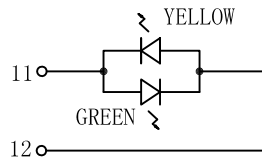
Schematic:

REV.	ECN NO.	DESCRIPTION	DATE	APPD
A	REL		2015/03/14	



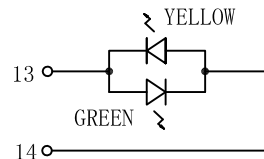
Electrical Specification @25°C

1. OCL: 350uH Min
@100KHz, 100mVrms, 8mA DC Bias
2. Turns Ratio: 1CT : 1CT
3. Insertion Loss:
0.5~100MHz: -1.1dB Max
4. Return Loss (dB Min):
0.5~30MHz: -18
30.1~60MHz: -18-20Log(f/30MHz)
60.1~80MHz: -12
5. Crosstalk (dB Min):
0.5~40MHz: -35
40.1~100MHz: -33-20Log(f/50MHz)
6. Common Mode Rejection Ratio (CMRR):
0.5~100MHz: -30dB Min
7. Hi-Pot: 1500Vrms @60Hz
8. Operating Temperature: -40°C ~ +85°C.



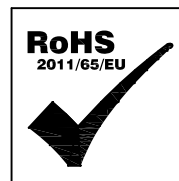
LEFT LED

LED POLARITY			COLOR
PIN 11	PIN 12		
+	-		GREEN
-	+		YELLOW



RIGHT LED

LED POLARITY			COLOR
PIN 13	PIN 14		
+	-		GREEN
-	+		YELLOW

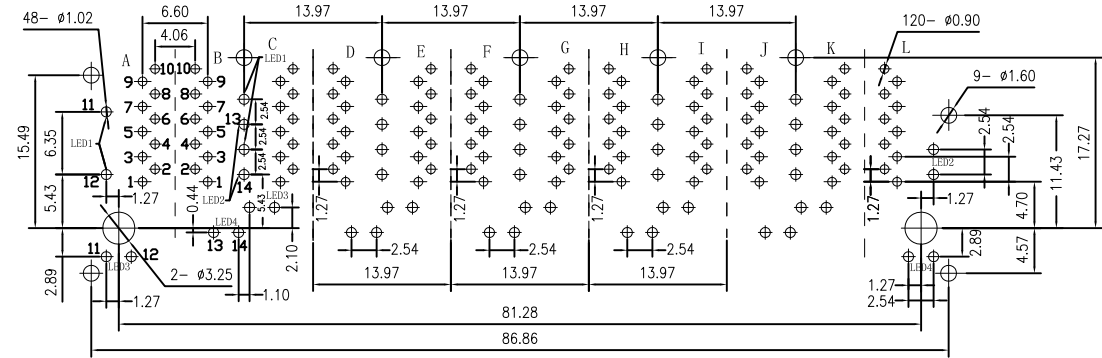
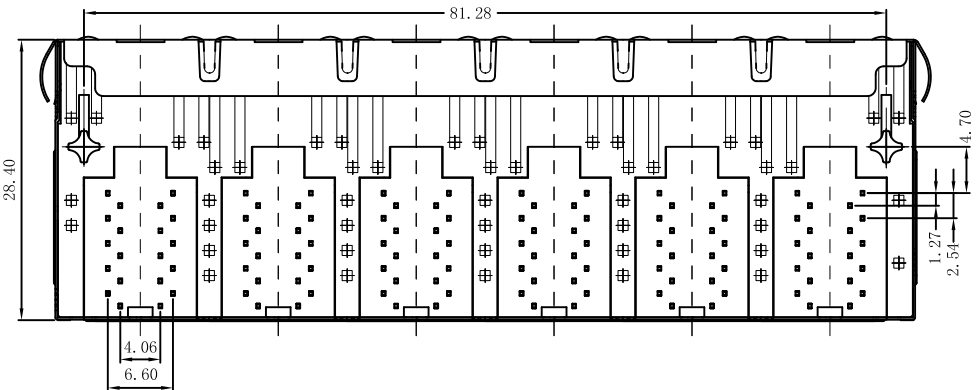
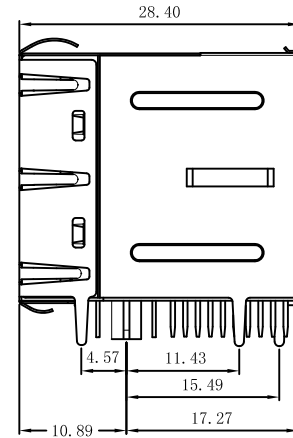
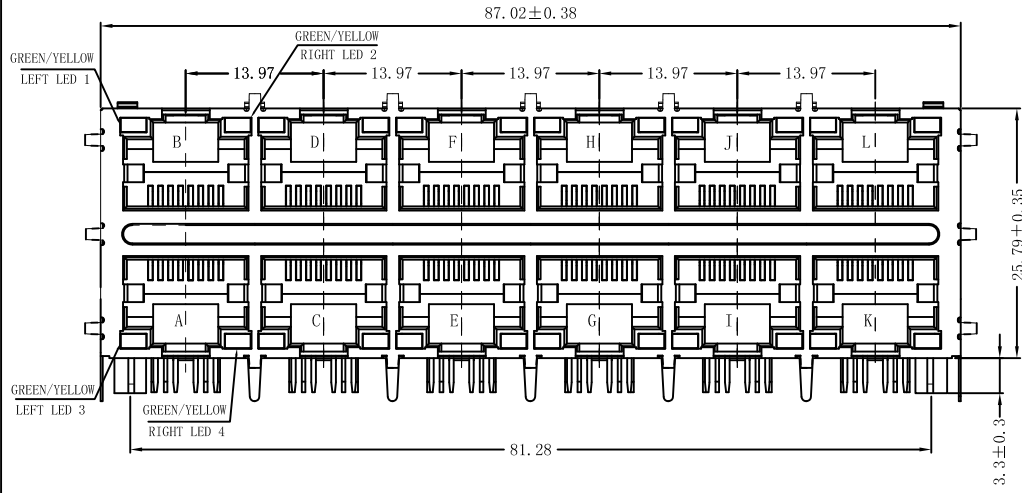


Emitting Color	λ p(nm)	VF@IF=20mA	IR @VR=5V
Green	565	1.8~2.6V	10 μ A max
Yellow	585	1.8~2.6V	10 μ A max

X:X	± 0.30	APPD:	LINK-PP LINK-PP INT'L TECHNOLOGY CO., LIMITED
X:XX	± 0.25	CHKD:	
X:XXX	± 0.05	DR: TOM	TITLE: RJ45 .Transformer. 1000 Base-T W/LED. 2x6 Port
ANGLES	$\pm 1^\circ$	UNIT: mm	PART NO.: LPJG67037A4NL
	SCALE: 2/1	SHEET: 1/2	REV: A
			DWG NO.: LP15031410

Mechanical:

REV.	ECN NO.	DESCRIPTION	DATE	APPD
A	REL		2015/03/14	



SUGGESTED PCB LAYOUT (TOP VIEW)

- NOTES:
1. Designed to support application, such as SOHO (ADSL modems), LAN-on-Motherboard (LOM), hub and Switches.
 2. Meets IEEE 802.3 specification
 3. Connector Materials:
 Housing: Thermoplastic UL94V-0
 Contact/Shield: Copper alloy
 Shield plating: Nickel
 Contact plating: Gold 6 micro-inches min. In contact area.
 4. Wave solder tip temperature: 265°C Max, 5 Sec Max.



X:X ±0.30	APPD:	LINK-PP LINK-PP INT'L TECHNOLOGY CO., LIMITED
X:XX ±0.25	CHKD:	
X:XXX ±0.05	DR: TOM	TITLE: RJ45 . Transformer. 1000 Base-T W/LED. 2×6 Port
ANGLES ±1°	UNIT: mm	PART NO.: LPJG67037A4NL
	SCALE: 2/1	SHEET: 2/2
	REV: A	DWG NO.: LP15031410