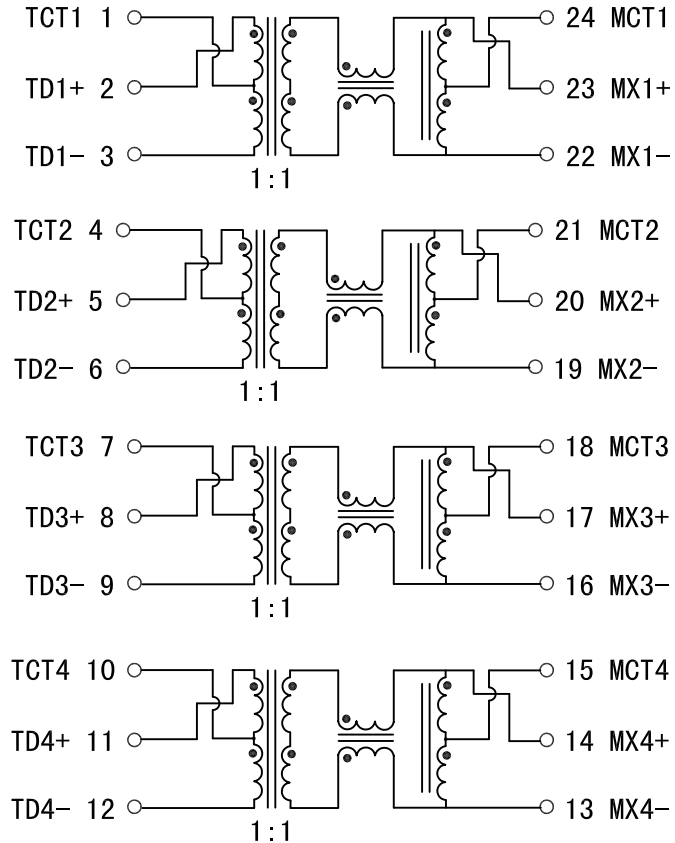


Schematic:

REV.	ECN NO.	DESCRIPTION	DATE	APPD
A	REL		24/09/2009	



Electrical Specification @25°C

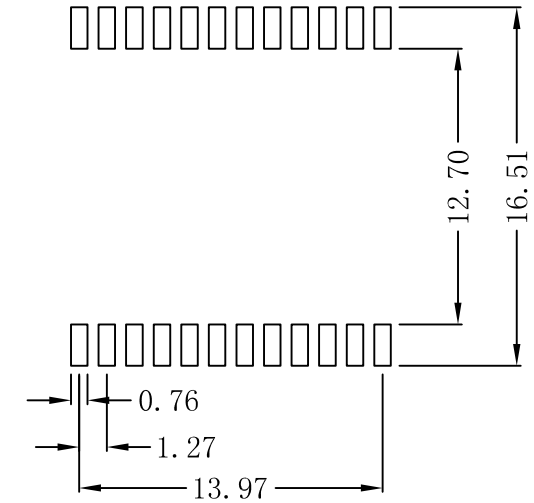
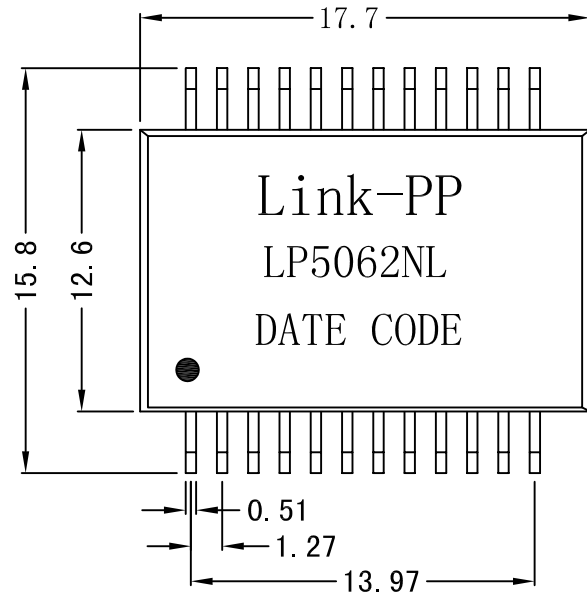
- Turns Ratio:
TX=1 : 1 RX=1 : 1
- Insertion Loss (dB MAX):
0.1MHz:-1.1 100MHz:-1.0
125MHz:-2.0
- Return Loss (dB MIN @100 Ω ±15%):
30MHz:-18 60MHz:-12
80MHz:-12 100MHz:-10
- Crosstalk (dB MIN):
30MHz:-43 60MHz:-37
100MHz:-33
- Isolation Voltage: 1500Vrms MIN
- Operating Temperature: 0°C ~ 70°C.



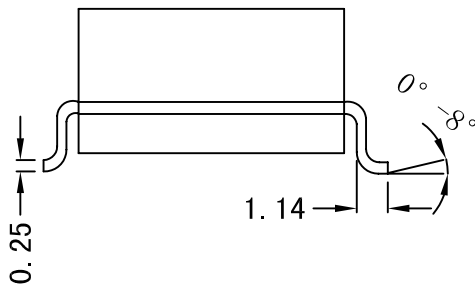
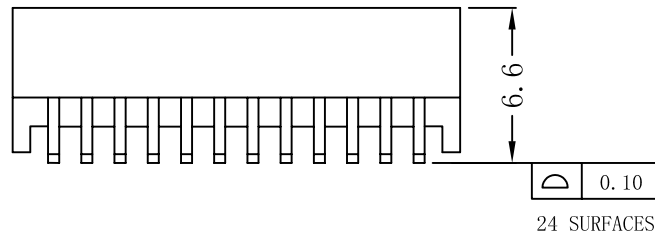
X:X	±0.20	APPD:	LINK-PP INT'L TECHNOLOGY CO., LIMITED	
X:XX	±0.10	CHKD:	<i>Title:</i> 1000Base-T Magnetic Modules	
X:XXX	±0.05	DR: TOM		
ANGLES	±1°	UNIT: mm	PART NO. :	LP5062NL
	SCALE: 2/1	SHEET: 1/2	REV: A	DWG NO. : LP09092401

Mechanical:

REV.	ECN NO.	DESCRIPTION	DATE	APPD
A	REL		24/09/2009	



SUGGESTED PAD LAYOUT



NOTES:

1. Designed to support application, such as SOHO (ADSL modems), LAN-on-Motherboard (LOM), hub and Switches.
2. With various Turns Ratios.
3. 350uH min OCL with 8mA bias current.
4. RoHS "NL" peak solder rating 245°C.



X:X	±0.20	APPD:	LINK-PP INT'L TECHNOLOGY CO., LIMITED	
X:XX	±0.10	CHKD:	Title: 1000Base-T Magnetic Modules	
X:XXX	±0.05	DR: TOM	PART NO.: LP5062NL	
ANGLES	±1°	UNIT: mm		
	SCALE: 2/1	SHEET: 2/2	REV: A	DWG NO.: LP09092401