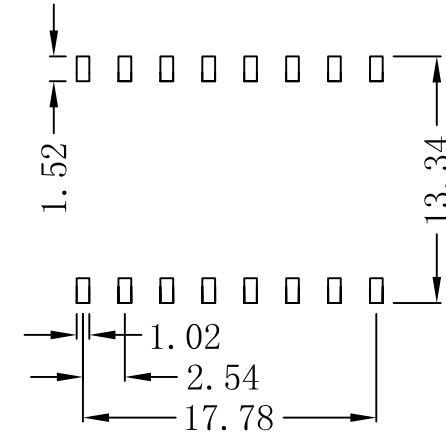
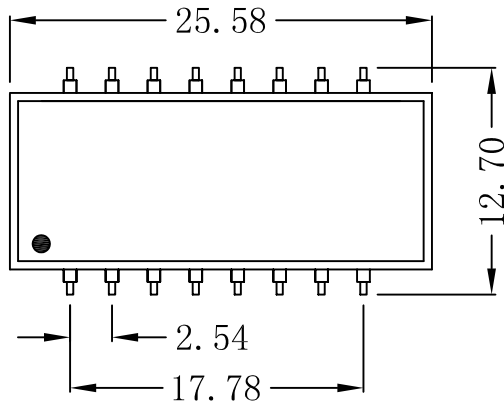
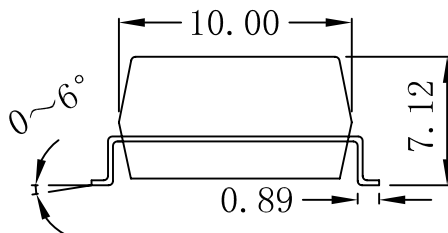
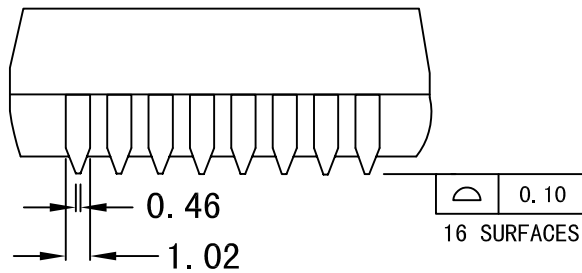


Mechanical :

REV.	ECN NO.	DESCRIPTION	DATE	APPD
A	REL		18/09/2008	



SUGGESTED PAD LAYOUT



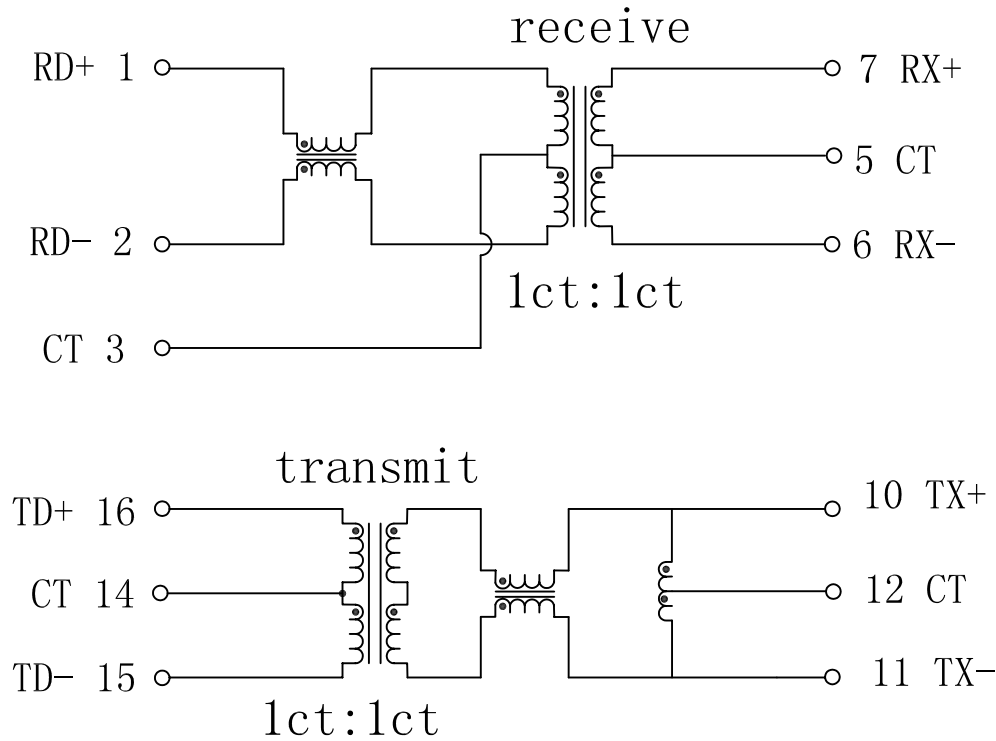
NOTES:

1. Designed to support application, such as SOHO (ADSL modems), LAN-on-Motherboard (LOM), hub and Switches.
2. With various Turns Ratios.
3. RoHS "NL" peak solder rating 235°C.

X:X	±0.20	APPD:	LINK-PP INT'L TECHNOLOGY CO., LIMITED	
X:XX	±0.10	CHKD:	Title: 10/100Base-T Single Port Transformer Modules	
X:XXX	±0.05	DR: TOM	PART NO.: LP1148NLE	
ANGLES	±1°	UNIT: mm		
	SCALE: 2/1	SHEET: 1/2	REV: A	DWG NO.: LP08091807

Schematic:

REV.	ECN NO.	DESCRIPTION	DATE	APPD
A	REL		18/09/2008	



Electrical Specifications @25°C

1. Chip Side OCL:
350uH min @100KHz 0.1V 8mA
2. Insertion Loss:
0.1-100MHz:-1.5dB max
3. Return Loss(dB min @100Ω):
1-30MHz:-18 40MHz:-13.5
50MHz:-11.5 60-80MHz:-10
4. Crosstalk(dB typ):
30MHz:-50 60MHz:-40
100MHz:-40
5. Differential to Common Mode Rejection:
30MHz:-42dB min 60MHz:-37dB min
100MHz:-33dB min
6. Isolation Voltage: 1500Vrms
7. Operating Temperature:-40~+85°C.



X:X	±0.20	APPD:	LINK-PP INT'L TECHNOLOGY CO., LIMITED	
X:XX	±0.10	CHKD:	Title: 10/100Base-T Single Port Transformer Modules	
X:XXX	±0.05	DR: TOM	PART NO.:	LP1148NLE
ANGLES	±1°	UNIT: mm	DWG NO. : LP08091807	
	SCALE: 2/1	SHEET: 2/2	REV: A	