



**Integrated RJ45 Connector**

- Single Port
- SMT 1X1
- Single Port with USB
- PoE+ (IEEE 802.3at) ...
- 1XN
- 2XN
- Vertical
- Low-Profile
- 10GBASE-T
- RJ45 Without Magnetics

**Discrete Magnetic Transformers**

- Single Port
- Dual Port
- Quad Port
- Low-Profile PCMCIA
- PoE/PoE+ (IEEE..
- 10G BASE-T

**Optical Transceivers**

- SFP28
- QSFP+
- CFP
- CXP
- SFP
- SFF
- 1X9
- QSFP28
- SFP+
- XFP

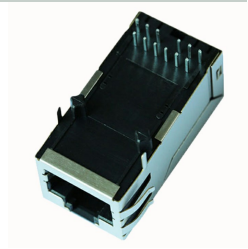
**Products**

Integrated RJ45 Connector>>Single Port

**LPJK6064CNL**

LINK-PP LPJK6064CNL 100% Cross JXK0-0161NL Pulse

LINK-PP Part Number:	LPJK6064CNL
Pulse Part Number:	JXK0-0161NL
Speed:	1000 Base-T
Number of Ports:	SINGLE
Application-Lan:	Ethernet(PoE)
Latch:	Up
PIN Type:	THT Solder
Temperature:	- 40 TO + 85



**Documents**

[Download Data sheet](#)

**Detailed information**

Single Port RJ45 Connector with 1000 Base-T Integrated Magnetics & PoE,Without LED,Tab Up,RoHS	
LINK-PP Part Number	LPJK6064CNL
Pulse Part Number	JXK0-0161NL
Application-Lan	ETHERNET(PoE)
AutomDX	YES
Bst Circuit	YES
Configuration RX	T,C
Configuration TX	T,C
Contact Mating Area Plating	GOLD 6u"/15u"/30u"
Cores per Port	8
Diodes	NO DIODES
LED Option	WITHOUT LEDS
Latch	TAB UP
Number of Ports	1X1
PCB	FR4
PCB Mount Angle	SIDE ENTRY
PCB Retaining Post	T POST
Package Height (Inches)	0.531
Package Height (mm)	13.50
Package Length (Inches)	1.30

Package Length (mm)	33.02
Package Width (Inches)	0.654
Package Width (mm)	16.60
Pin Type	THT SOLDER
RoHS Compliant	YES-RoHS-5 WITH LEAD IN SOLDER EXEMPTION
Search	YES
Shield EMI Tabs	WITH
Speed	1000 BASE-T
Temperature	- 40 TO + 85°C
Turns Ratio RX	1CT:1CT
Turns Ratio TX	1CT:1CT

With low price but high-quality UL Certification LPJK6064CNL, JXK0-0161NL on your service, LINK-PP is one of the best LPJK6064CNL manufacturers.

