

Surface Mount Option for SOT-23 Package LED Lamps

LTL-907TA

Features

- Compatible with automatic placement equipment.
- Microminiature package LED Lamp.
- Surface mount assembly lamp.
- High efficiency/lower power consumption.
- Long life solid state reliability.

Description

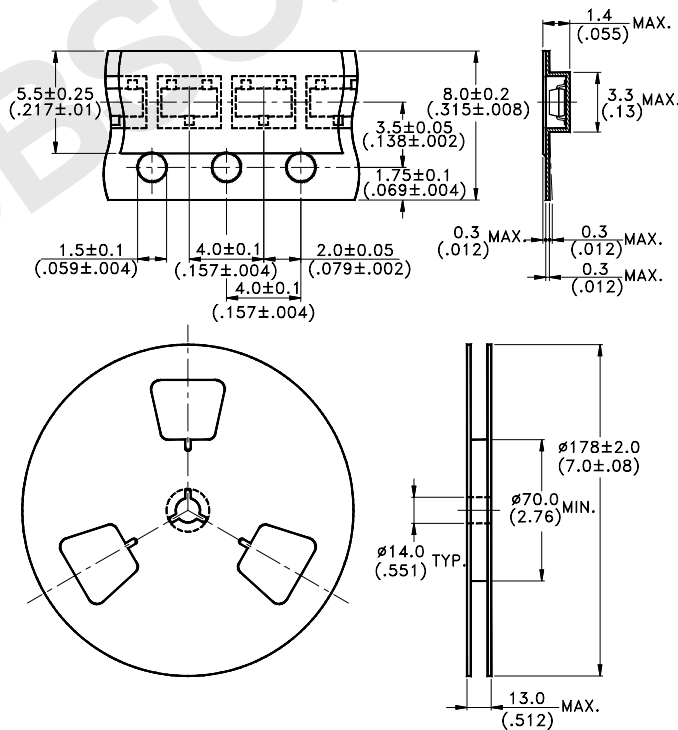
The LTL-907TA is used robust' plastic tape and each reel contains 3000 devices in 8mm with carrier Tape. The Package is follow EIA-481-1A STD.

Ordering Information

To obtain LTL-907 series LED Lamps package on tape and reel, include the appropriate option code along with the devices catalogue Part Number.

Example: To order the LTL-907PK on tape and reel with option A, which Part No. as follow LTL-907PKTA.

Package Dimensions of Tape and Reel



SMD LAMPS