

RoHS

K78XX-1500(L) Series

**WIDE INPUT NON-ISOLATED & REGULATED
SINGLE OUTPUT**

FEATURES

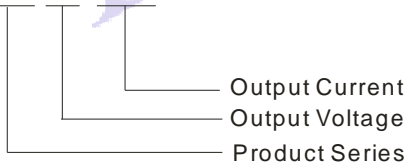
- Efficiency up to 95%, No heatsink required
- 1.5A large current output
- Operating temperature : -40°C ~ +85°C
- Short circuit protection, thermal shutdown
- Low ripple and noise
- Micro miniature SIP package, meet UL94-V0 requirement
- Ultra low power loss
- Industry standard pinout
- Pin-out compatible with LM78XX Linear
- MTBE>2000,000Hours

APPLICATIONS

Upgraded K78XX-1500(L) series switching regulators are ideal replacement for K78xx linear regulators and LDOs. The efficiency of up to 95% means that very little energy is wasted as heat so there is no need for any heat sinks with their additional space and mounting costs. They are widely used in industrial control, instrumentation, and electric power applications.

MODEL SELECTION

K7805-1500



MORNSUN Science & Technology Co.,Ltd.

Address: No. 5, Kehui St. 1, Kehui development center, Science Ave., Guangzhou Science City, Luogang district, Guangzhou, P.R.China.

Tel: 86-20-28203030

Fax: 86-20-28203068

[Http://www.mornsun-power.com](http://www.mornsun-power.com)

PRODUCT PROGRAM

Part Number	Input Voltage(VDC)		Output		Efficiency (%) (Typ)	
	Nominal	Range	Voltage (VDC)	Current (mA)	Vin (min.)	Vin (max.)
K7801-1500(L)	12	4.75-18	1.5	1500	83	78
K78X2-1500(L)	12	4.75-18	1.8	1500	85	81
K7802-1500(L)	12	4.75-18	2.5	1500	88	85
K7803-1500(L)	12	4.75-18	3.3	1500	91	88
K7805-1500(L)	12	6.5-18	5	1500	93	91
K78X6-1500(L)	12	8-18	6.5	1500	95	93

Add suffix "L" for 90° bend pins, for example: K7805-1500L.

OUTPUT SPECIFICATIONS

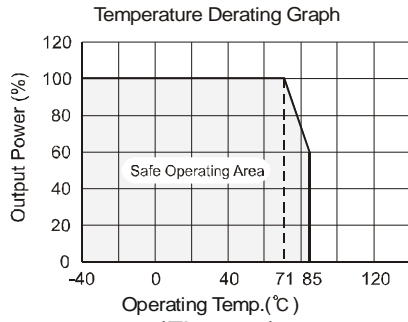
Item	Test conditions	Min.	Typ.	Max.	Units
Output voltage accuracy	100% full load, input voltage range		±2	±3	%
Line regulation	Vin=min. to max, at full load		±0.5	±0.75	
Load regulation	10% to 100% load		±0.5	±1.0	
Ripple & Noise*	20MHz bandwidth (refer to figure 6)		20	45	mVp-p
Short circuit input power			0.5	1.8	W
Short circuit protection		Continuous, auto-recovery			
Thermal shutdown	Internal IC junction		150		°C
Output current limit			5000		mA
Switching frequency	Full load, input voltage range	300	340	380	KHz
Quiescent current			5	10	mA
Temperature coefficient	-40°C ~ +85°C ambient			±0.02	%/°C
Max capacitance load				1000	µF

*Test ripple and noise by "parallel cable" method.

COMMON SPECIFICATIONS

Operating temp. range	-40~+85 °C (above 71°C power derating)	
Operating case temp.	+100 °C (max)	
Storage temp. range	-55~+125 °C	
Cooling	Free air convection	
Lead temperature**	300 °C (max)	
Storage humidity range	≤ 95%	
Case material	Plastic(UL94-V0)	
MTBF	> 2000k hours (25°C, MIL-HDBK-217F)	
Weight	4.0g	
Conducted emissions (Refer to Figure 5)	EN55022	CLASS B
Radiated emissions	EN55022	CLASS B
ESD	EN61000-4-2 Level 3 6kV/8kV perf. Criteria B	
**1.5mm from case for 10 seconds		

TYPICAL CHARECTERISTICS

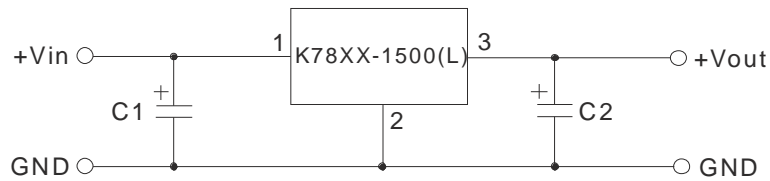


(Figure 1)

EXTERNAL CAPACITOR TABLE

Part Number	C1 (Ceramic capacitor)	C2 (Ceramic capacitor)
K7801-1500(L)	10 μ F/25V	22 μ F/6.3V
K78X2-1500(L)	10 μ F/25V	22 μ F/6.3V
K7802-1500(L)	10 μ F/25V	22 μ F/6.3V
K7803-1500(L)	10 μ F/25V	22 μ F/6.3V
K7805-1500(L)	10 μ F/25V	22 μ F/16V
K78X6-1500(L)	10 μ F/25V	22 μ F/16V

TYPICAL APPLICATION CIRCUIT

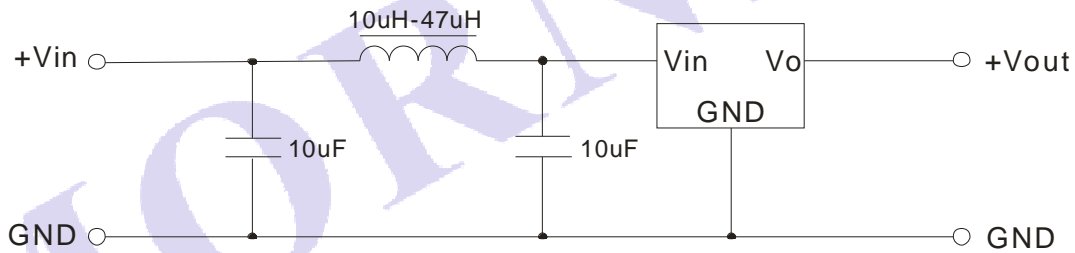


(Figure 2)

Note:

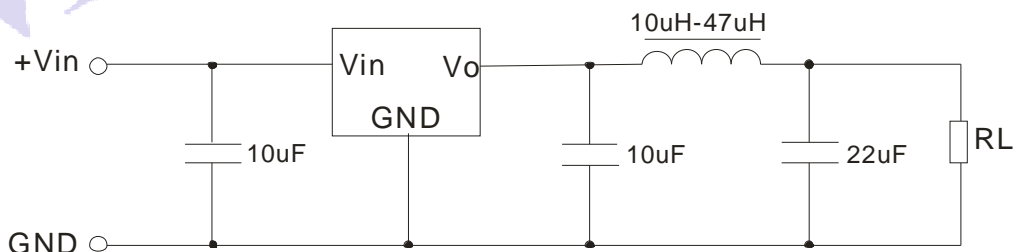
1. C1 and C2 are required and should be fitted close to the converter pins.
2. The capacitance of C1 and C2 sees external capacitor table, it can be increased properly if required, and tantalum or low ESR electrolytic capacitors may also suffice.
3. No parallel connection or plug and play.

INPUT FILTER CIRCUIT CONNECT



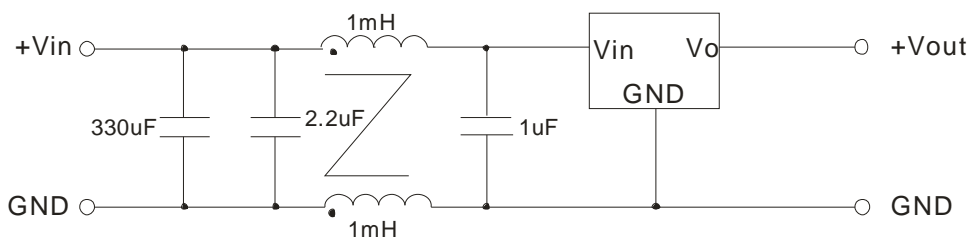
(Figure 3)

OUTPUT FILTER CIRCUIT CONNECT



(Figure 4)

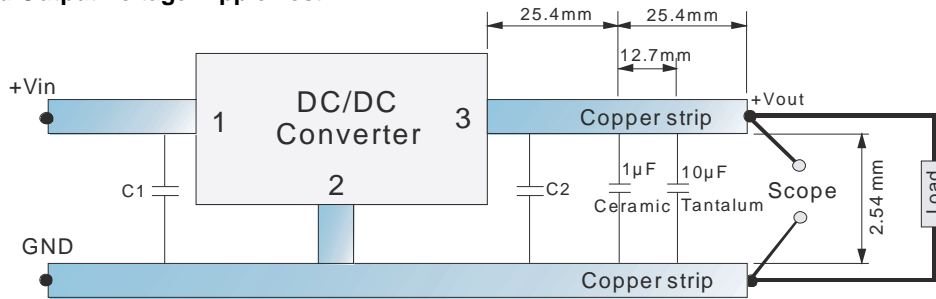
EMC RECOMMENDED CIRCUIT



(Figure 5)

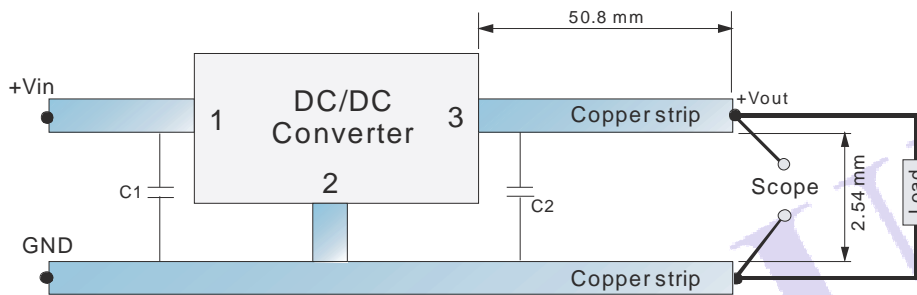
TEST CONFIGURATIONS (TA=25°C)

1 Efficiency and Output Voltage Ripple Test



(Figure 6)

2 Start-up and Load Transient Response Test

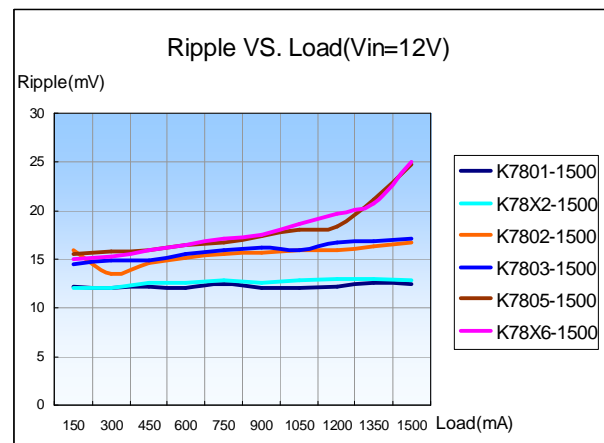
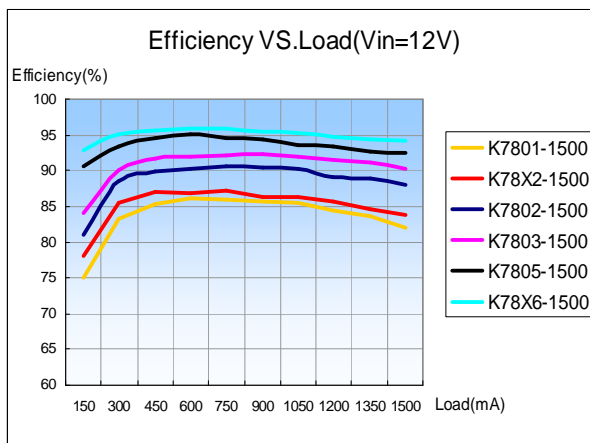
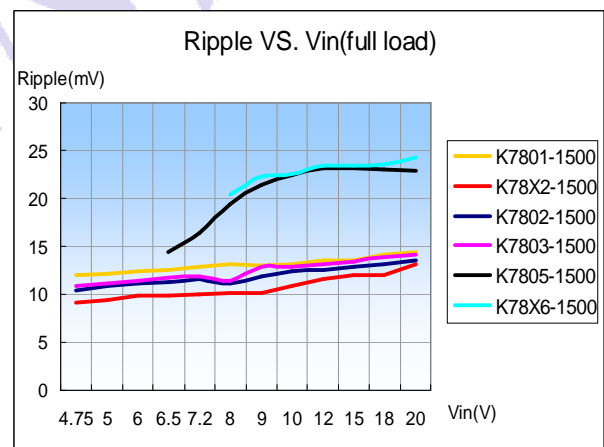
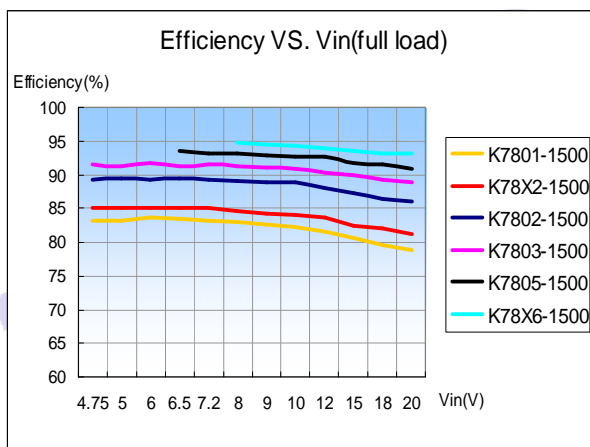


(Figure 7)

CHARACTERISTICS CURVE

Efficiency

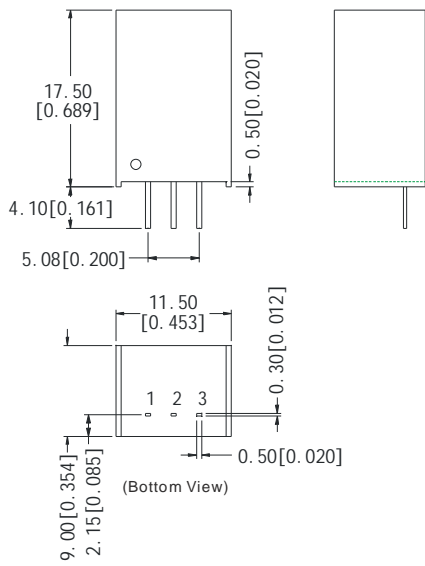
Ripple



OUTLINE DIMENSIONS & FOOTPRINT DETAILS

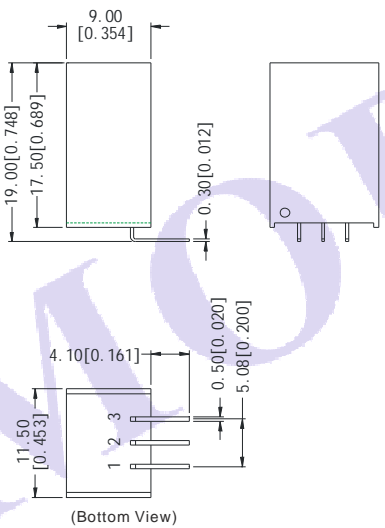
MECHANICAL DIMENSIONS

K78XX-1500



Note:
Unit:mm[inch]
Pin section tolerances: $\pm 0.10\text{mm}[\pm 0.004\text{inch}]$
General tolerances: $\pm 0.25\text{mm}[\pm 0.010\text{inch}]$

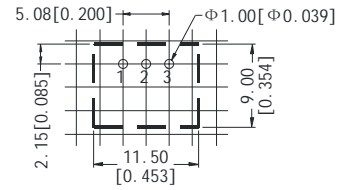
K78XX-1500L



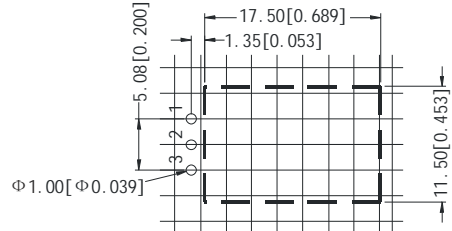
Note:
Unit:mm[inch]
Pin section tolerances: $\pm 0.10\text{mm}[\pm 0.004\text{inch}]$
General tolerances: $\pm 0.25\text{mm}[\pm 0.010\text{inch}]$

RECOMMENDED FOOTPRINT

K78XX-1500



K78XX-1500L

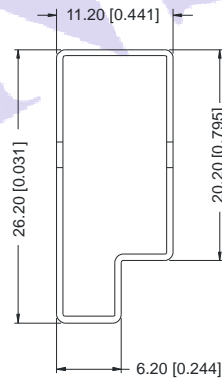


Note:
grid:2.54*2.54mm.

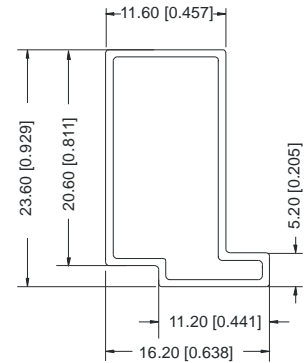
FOOTPRINT DETAILS	
Pin	Function
1	+Vin
2	GND
3	+Vout

TUBE OUTLINE DIMENSIONS

K78XX-1500



K78XX-1500L



Note:
Unit :mm[inch]
General tolerances: $\pm 0.50\text{mm}[\pm 0.020\text{inch}]$
L=530mm[20.866inch] Devices per tube quantity: 44pcs
L=220mm[8.661inch] Devices per tube quantity: 17pcs
Short tube inner packaging dimensions: L*W*H=255*170*80mm
Short tube outer packaging dimensions(with six inner packaging boxes):
L*W*H=375*280*270mm
Long tube inner packaging dimensions: L*W*H=580*200*100mm
Long tube outer packaging dimensions(with two inner packaging boxes):
L*W*H=600*215*220mm
Long tube outer packaging dimensions(with three inner packaging boxes):
L*W*H=600*215*325mm

- Note: 1. All specifications measured at $T_a=25^\circ\text{C}$, humidity<75%, nominal input voltage(12V) and rated output load unless otherwise specified.
2. Only typical models listed, other models may be different, please contact our technical person for more details.
3. In this datasheet, all the test methods of indications are based on corporate standards.