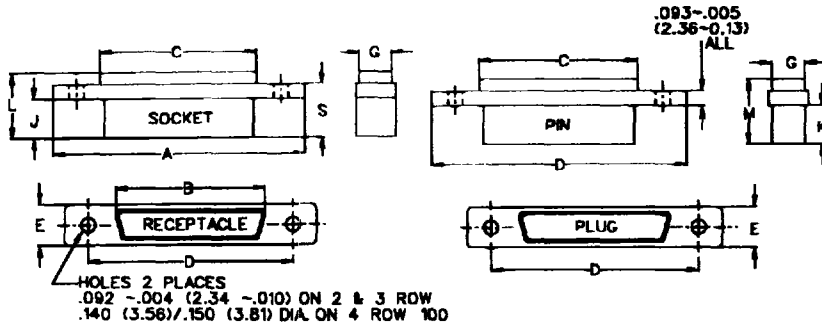
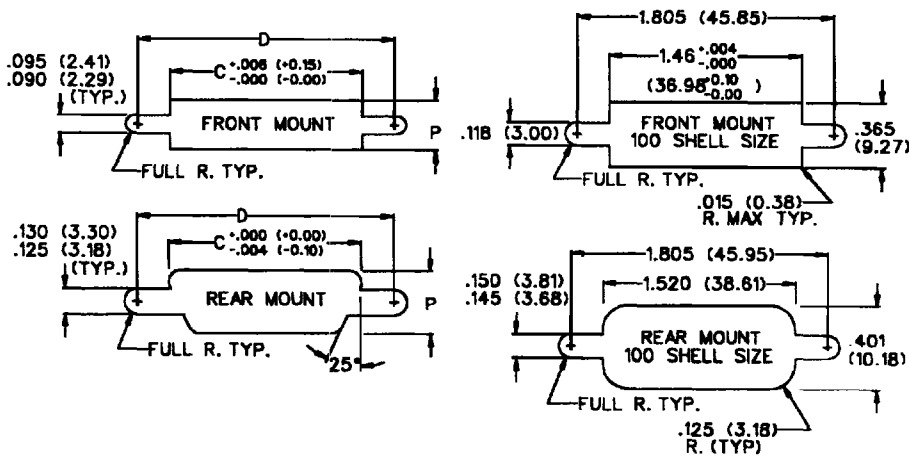


molex 1.27mm (.050") Pitch
Ulti-Mate™
Micro-D Subminiature

- P Series** Plastic Shell Qualified to MIL-C-83513
- A Series** Metal Shell
- M Series** Metal Shell Qualified to MIL-C-83513
- B Series** Plastic Shell



PANEL MOUNTING



- P = 4.45 (.175) for A and P, 2-Row Front Mounting
- P = 7.11 (.280) for M and B, 2-Row Front Mounting
- P = 5.72 (.225) for A and P, 3-Row Front Mounting
- P = 8.13 (.320) for M and B, 3-Row Front Mounting
- P = 5.56 (.219) for A and P, 2-Row Rear Mounting
- P = 6.73 (.265) for M and B, 2-Row Rear Mounting
- P = 6.73 (.265) for A and P, 3-Row Rear Mounting
- P = 7.75 (.305) for M and B, 3-Row Rear Mounting

ORDERING INFORMATION AND DIMENSIONS

No. of Rows	Size	Series and Dimension						
		All Series	A and P Series			M and B Series		All Series
		A	B	C	B	C	D	
2	9	19.94 (.785)	9.55 (.376)	10.29 (.405)	10.21 (.402)	10.16 (.400)	14.35 (.565)	
	15	23.75 (.935)	13.36 (.526)	14.10 (.555)	14.02 (.552)	13.97 (.550)	18.16 (.715)	
	21	27.56 (1.085)	17.17 (.676)	17.91 (.705)	17.83 (.702)	17.78 (.700)	21.97 (.865)	
	25	30.10 (1.185)	19.71 (.776)	20.45 (.805)	20.37 (.802)	20.32 (.800)	24.51 (.965)	
	31	33.91 (1.335)	23.52 (.926)	24.26 (.955)	24.18 (.952)	24.13 (.950)	28.32 (1.115)	
3	37	37.72 (1.485)	27.33 (1.076)	28.07 (1.105)	28.00 (1.102)	27.94 (1.100)	32.13 (1.265)	
	51	36.45 (1.435)	26.06 (1.026)	26.62 (1.048)	26.72 (1.052)	26.67 (1.050)	30.86 (1.215)	
4	100	54.99 (2.165)			38.23 (1.505)	36.63 (1.442)	45.72 (1.800)	

No. of Rows	Series	Mating Height					
		E	J Socket	K Pin	L Socket	M Pin	G
2	A and P	5.54 (2.18)	4.65 (1.83)	5.18 (2.04)	9.53 (3.75)	10.03 (3.95)	4.39 (1.73)
	M and B	7.82 (3.08)	5.03 (1.98)	4.72 (1.86)	10.90 (4.29)	10.57 (4.16)	6.86 (2.70)
3	A and P	6.60 (2.60)	4.65 (1.83)	5.18 (2.04)	9.53 (3.75)	10.03 (3.95)	5.59 (2.20)
	M and B	8.92 (3.51)	5.03 (1.98)	4.72 (1.86)	10.90 (4.29)	10.57 (4.16)	7.87 (3.10)
4	M and B	10.01 (3.94)	5.03 (1.98)	4.72 (1.86)	10.90 (4.29)	10.57 (4.16)	9.14 (3.60)

Note: Standard shell sizes, contact factory for more information

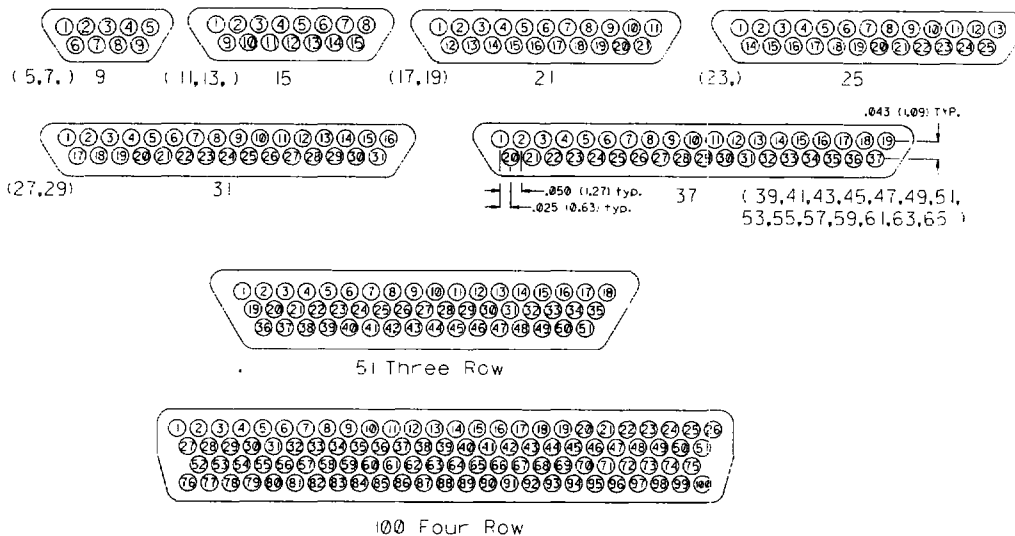
Micro/Nano Interconnections



STANDARD PIN LAYOUTS

The layouts shown are standard, however, you may order any number of contacts from 5 to 65 in odd increments: 5, 7, 9, 11, 15, etc. up to 65, in the 2-row configurations. The other 2 standards are the 3-row 51 (51-3) and the 4-row 100. Socket sides of connector are a mirror image.

Note: Contact numbers are for reference only and do not appear on the insulator or connector body. Layouts are enlarged for clarity.

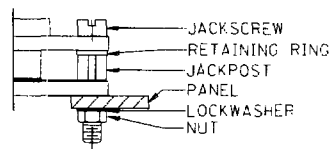


MOUNTING/COUPLING HARDWARE

Typical application includes jackscrews on plug connector and jackposts on receptacle. Standard jackposts are for front panel mounting. For rear panel mount, contact factory.

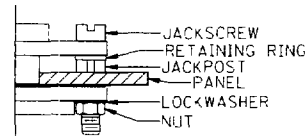
Order Code	No. of Rows	Description	Dimension		Thread
			A	B	
02	2 and 3	Jackscrew Low Allen	9.17 (.361)	2.62 (.103)	2-56 UNC-2A
03	2 and 3	Jackscrew High Allen	22.05 (.868)	15.49 (.610)	2-56 UNC-2A
05	2 and 3	Jackscrew Low Slot	9.17 (.361)	2.62 (.103)	2-56 UNC-2A
06	2 and 3	Jackscrew High Slot	22.05 (.868)	15.49 (.610)	2-56 UNC-2A
07	2 and 3	Jackpost	12.70 (.500)	4.83 (.190)	2-56 UNC-2B
12	4 (100)	Jackscrew Low Allen	9.91 (.390)	2.62 (.103)	4-40 UNC-2A
13	4 (100)	Jackscrew High Allen	22.91 (.902)	15.49 (.610)	4-40 UNC-2A
15	4 (100)	Jackscrew Low Slot	9.91 (.390)	2.62 (.103)	4-40 UNC-2A
16	4 (100)	Jackscrew High Slot	22.91 (.902)	15.49 (.610)	4-40 UNC-2A
17	4 (100)	Jackpost	12.70 (.500)	4.70 (.185)	4-40 UNC-2B

Panel Mounting



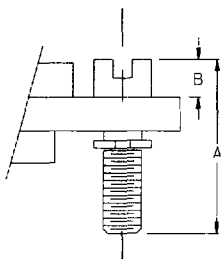
Front Mount

Panel Mounting

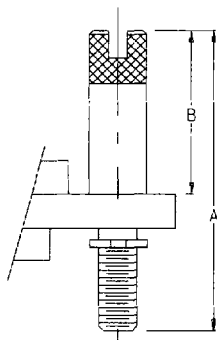


Rear Mount (Consult Factory)

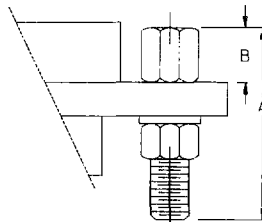
Micro/Nano Interconnections



Jackscrew Low Profile



Jackscrew High Profile



Jackpost