

FEATURES AND SPECIFICATIONS

Features and Benefits

- Size 6 circuits
- Provides the interface for speeds up to 400 Mbps
- Full metal shielding for ESD protection
- High-temperature plastic housing for SMT processing
- Rugged Gold-plated leaf contacts withstand up to 1500 cycles
- Polarized shell design and friction lock grounding fingers ensure plug retention

Reference Information

Packaging: Tray

Mates With: [59233-0XXX](#), [59233-300X](#) and [59233-6003](#) cable plugs

Designed In: Millimeters

Electrical

Voltage: 40V

Current: 1.5A

Contact Resistance: Terminal—30mΩ max.

Shell—50mΩ max.

Dielectric Withstanding Voltage: 500V AC/1 min.

Insulation Resistance: 1000 MΩ min.

Physical

Housing: Black glass-filled 4/6 nylon, UL 94V-0 or equivalent

Shell: Phosphor Bronze, Tin/Lead over Nickel plating

Contact: Brass

Plating: Contact area—Gold over Nickel

Solder Tail Area—Tin/Lead over Nickel

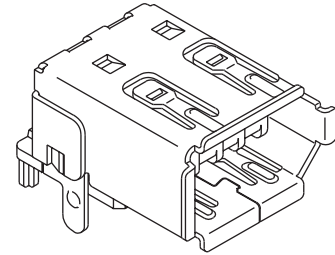
Operating Temperature: -40 to +85°C



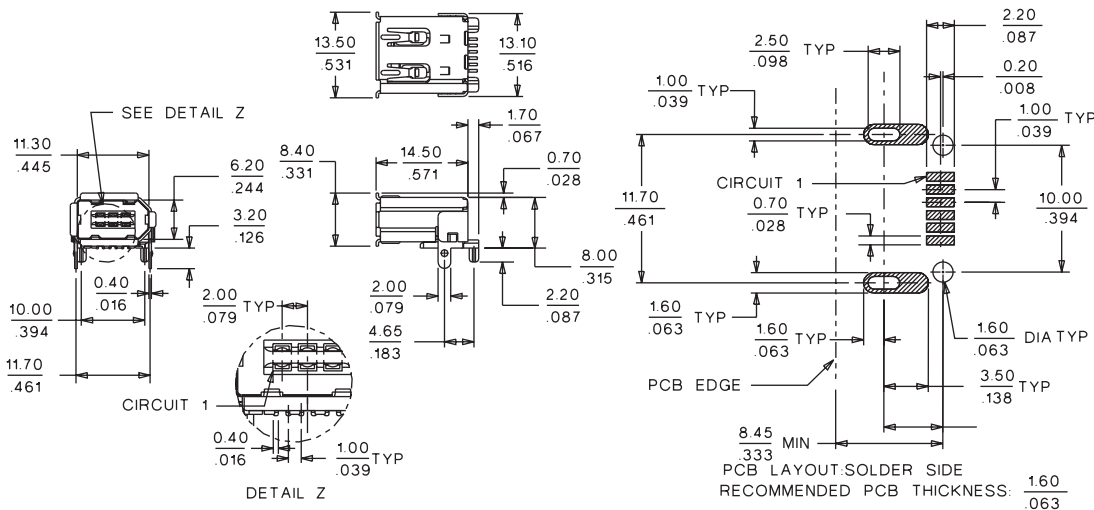
2.00mm (.079") Pitch
IEEE 1394-1995
Shielded I/O
PCB Socket

53462

Right Angle
Flat, SMT



CATALOG DRAWING (FOR REFERENCE ONLY)



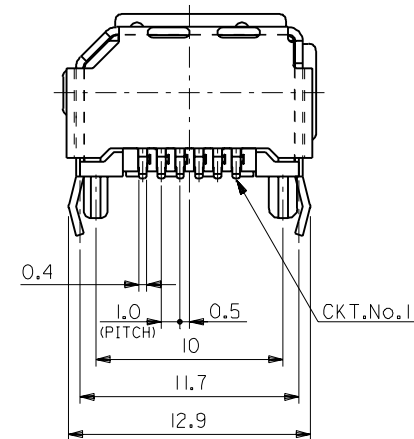
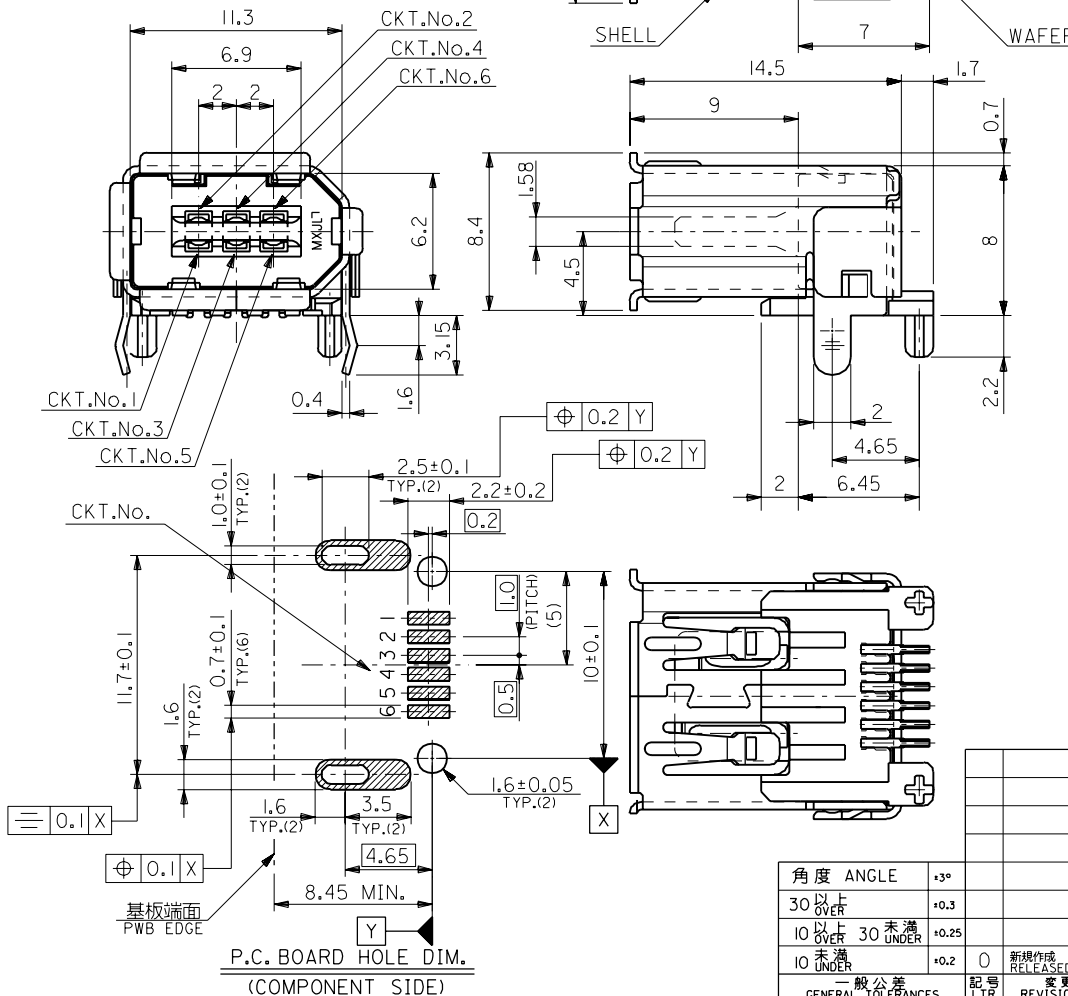
Note: Drawing shown is 53462-0611

ORDERING INFORMATION

Circuits	Order No.	
	With Kinked Metal Pegs	Without Kinked Metal Pegs
6	53462-0621	53462-0611

Note: Molex's IEEE 1394 connector and cable products are licensed for use exclusively with the 1394 BUS technology. Use of this product contrary to this restriction will constitute a violation of certain license restrictions and may pose a serious safety hazard.

部品名 PARTS NAME	材質 MATERIAL	注記 NOTES
ウエハー WAFER	ガラス入り46ナイロン NYLON46 G.F.	G.F.30%, UL94V-0, 色:黒 G.F.30%, UL94V-0, COLOR:BLACK
ピン PIN	黄銅 t0.25 BRASS t0.25	接点部:金メッキ0.76μmMIN. CONTACT AREA:GOLD 0.76μmMIN. 半田付け部:半田メッキ3μmMIN. SOLDER TAIL AREA:TIN-LEAD 3μmMIN. 下地メッキ:ニッケルメッキ2μmMIN. UNDER-PLATING:NICKEL 2μmMIN.
シエル SHELL	りん青銅 t0.4 PHOSPHOR BRONZE t0.4	半田メッキ:3~6μm TIN-LEAD:3~6μm 下地メッキ:ニッケルメッキ1.27μmMIN. UNDER-PLATING:NICKEL 1.27μmMIN.



角度 ANGLE	±3°
30°以上 OVER	+0.3
10°以上 30°未満 OVER UNDER	+0.25
10°未満 UNDER	+0.2

記号 LTR	0	新規作成 RELEASED	(JC80564)	1/12	98/1/12
変更内容 REVISION RECORD					
DR. CHK.					
日付 DATE					

材料 MATERIAL	表参照 SEE TABLE
仕上げ FINISH	表参照 SEE TABLE
適用電線範囲 WIRE RANGE	—
被覆外径 INS. RANGE	—
DRAWN BY	98/1/12 T.NIITSU
CHK'D BY	98/1/13 S.KUNISHI
APP'D BY	98/1/13 M.FUKUSHIMA
尺度 SCALE	4:1

MOLEX-JAPAN CO.,LTD. 日本モレックス株式会社	
REVISE ONLY ON CAD SYSTEM	
TITLE 名称	
2.0 I/O CONN. SOCKET RIGHT-ANGLE FLAT WITH KINK	
DWG. NO.	REV
SD-53462-0621	0

8

7

6

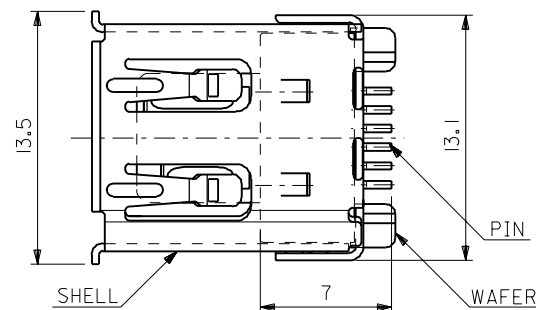
5

4

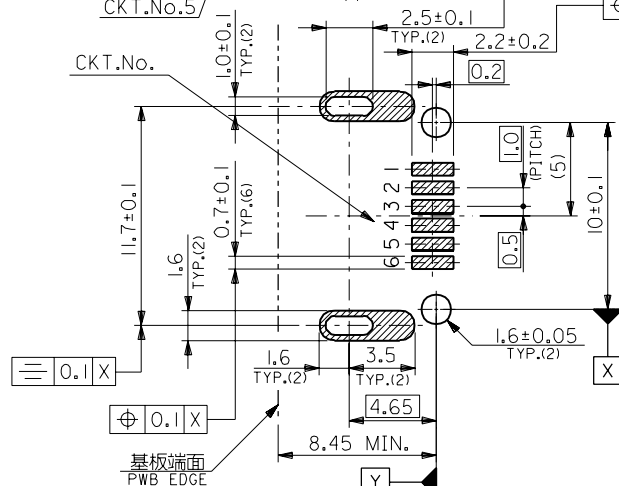
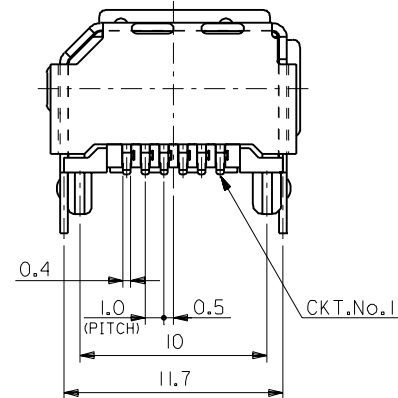
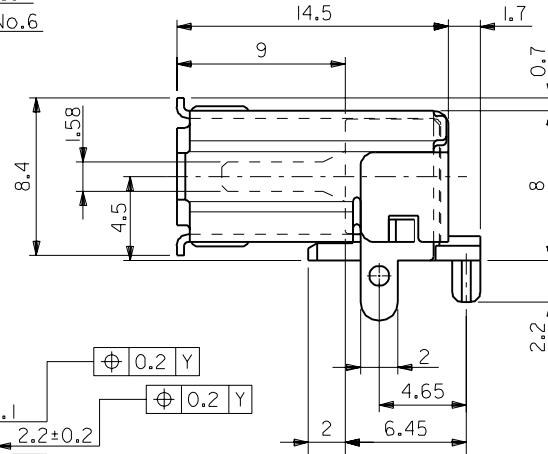
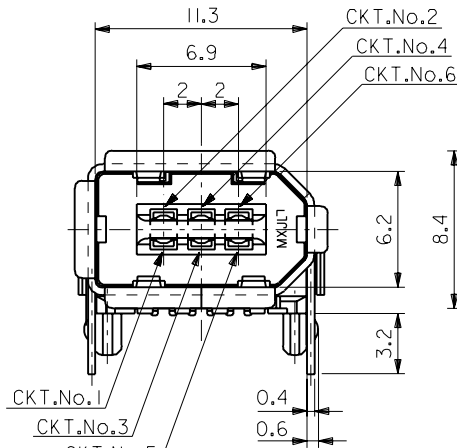
3

2

1



部品名 PARTS NAME	材質 MATERIAL	注記 NOTES
ウェハー WAFFER	ガラス入り46ナイロン NYLON46 G.F.	G.F.30%, UL94V-0, 色:黒 G.F.30%, UL94V-0, COLOR:BLACK
ピン PIN	黄銅 t0.25 BRASS t0.25	接点部:金メッキ0.76μmMIN. CONTACT AREA:GOLD 0.76μmMIN. 半田付け部:半田メッキ3μmMIN. SOLDER TAIL AREA:TIN-LEAD 3μmMIN. 下地メッキ:ニッケルメッキ2μmMIN. UNDER-PLATING:NICKEL 2μmMIN.
シエル SHELL	りん青銅 t0.4 PHOSPHOR BRONZE t0.4	半田メッキ:3~6μm TIN-LEAD:3~6μm 下地メッキ:ニッケルメッキ1.27μmMIN. UNDER-PLATING:NICKEL 1.27μmMIN.



P.C. BOARD HOLE DIM.
(COMPONENT SIDE)

角度 ANGLE	公差 TOLERANCE
30°以上 OVER	+3°
10°以上 30°未満 OVER UNDER	+0.3
10°未満 UNDER	+0.25
10°未満 UNDER	+0.2

材料 MATERIAL		表参照 SEE TABLE	材料 MATERIAL		表参照 SEE TABLE
仕上げ FINISH		表参照 SEE TABLE	適用電線範囲 WIRE RANGE		適用電線範囲 WIRE RANGE
被覆外径 INS. RANGE		被覆外径 INS. RANGE	DRAWN BY S. Shimizu		CHK'D BY Y. Ota
新規格 RELEASED		新規格 RELEASED	APP'D BY S. Shimizu		尺度 SCALE 4-1
記号 LTR		変更内容 REVISION RECORD	DR. CHK.		日付 DATE
D 変更 REVISED (J071114)		C 変更 REVISED (J071066)	B 変更 REVISED (J060556)		A 変更 REVISED (T50530)
O 新規作成 RELEASED (T40979)					

MOLEX-JAPAN CO.,LTD.
日本モレックス株式会社

REVISE ONLY ON CAD SYSTEM
TITLE 名称
2.0 I/O CONN. SOCKET
RIGHT-ANGLE FLAT

DWG. NO. SD-53462-0611
REV D