

CKT. SIZE	DIM. A	DIM. B (MAX.)
2	(2.54)	(5.05)
	.100	.199
3	(5.08)	(7.59)
	.200	.299
4	(7.62)	(10.13)
	.300	.399
5	(10.16)	(12.67)
	.400	.499
6	(12.70)	(15.21)
	.500	.599
7	(15.24)	(17.75)
	.600	.699
8	(17.78)	(20.29)
	.700	.799
9	(20.32)	(22.83)
	.800	.899
10	(22.86)	(25.37)
	.900	.999
11	(25.40)	(27.91)
	1.000	1.099
12	(27.94)	(30.45)
	1.100	1.199
13	(30.48)	(32.99)
	1.200	1.299
14	(33.02)	(35.53)
	1.300	1.399
15	(35.56)	(38.07)
	1.400	1.499
16	(38.10)	(40.61)
	1.500	1.599
17	(40.64)	(43.15)
	1.600	1.699
18	(43.18)	(45.69)
	1.700	1.799
19	(45.72)	(48.23)
	1.800	1.899
20	(48.26)	(50.77)
	1.900	1.999
21	(50.80)	(53.31)
	2.000	2.099
22	(53.34)	(55.85)
	2.100	2.199
23	(55.88)	(58.39)
	2.200	2.299
24	(58.42)	(60.93)
	2.300	2.399
25	(60.96)	(63.47)
	2.400	2.499

- NOTES:
1. TO BE USED WITH #22-#28 AWG STRANDED WIRE WITH .053/(1.35) DIA. MAX. INSULATION.
 2. SEE CHART FOR CIRCUIT SIZES.
 3. FOR OPTIONS A, C, D, AND G: STANDARD PACKAGING PER PK-70873-0001.
 4. FOR APPL. SPEC. REFER TO SDES-70400
 5. ALL DIMENSIONS ARE REFERENCE ONLY.
 6. REFER TO PRODUCT SPECIFICATION PS-70400.
 7. SEE SHEET 3 FOR OPTIONAL HOUSING DETAILS.
 8. 2 CIRCUIT ASSEMBLIES SUPPLIED AS GROUPED PAIRS.

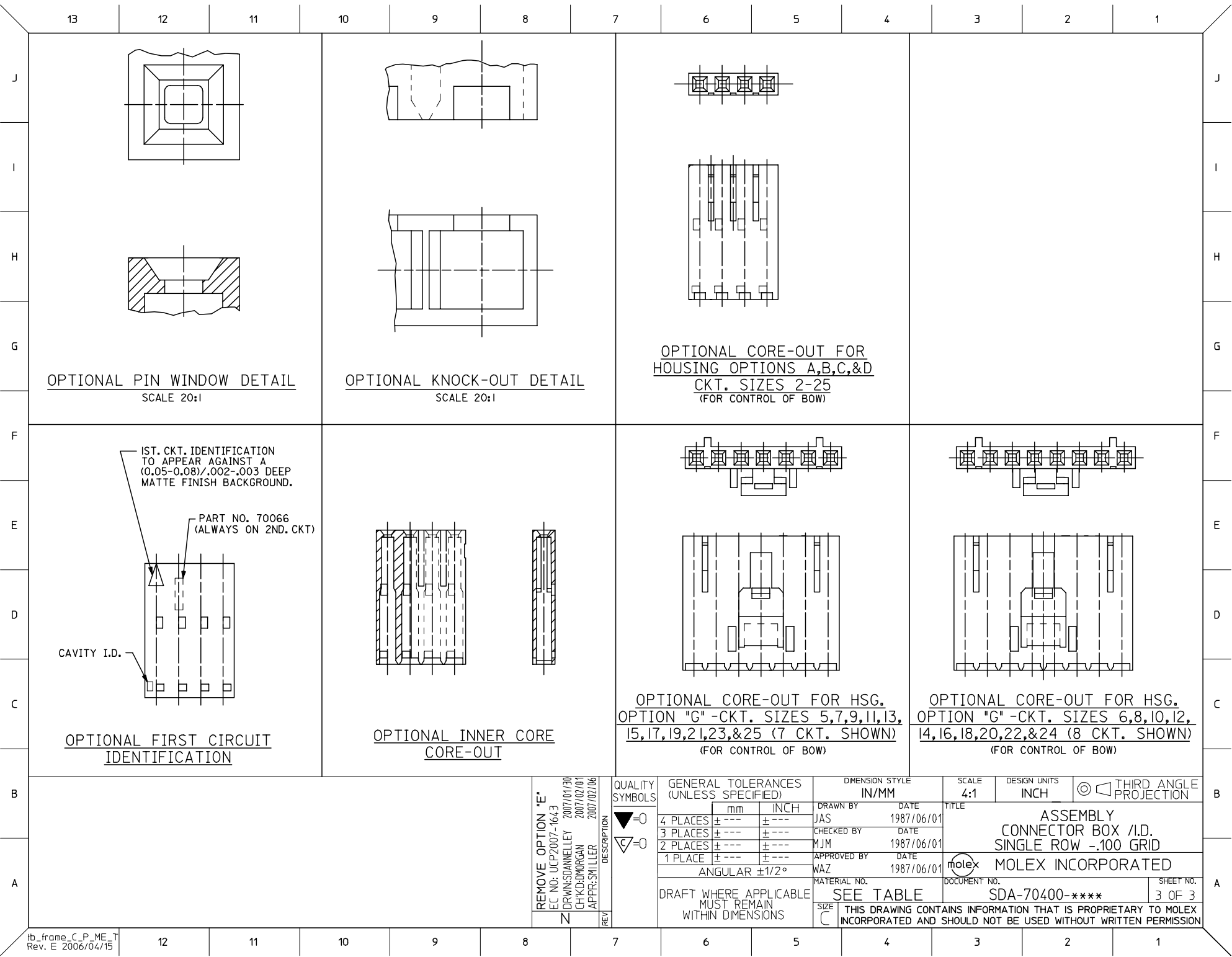
* REFER TO SHEET 2 FOR PART NO'S, PLATINGS, AND WIRE SIZE.

3	N
2	N
1	N
SHT	REV

REMOVE OPTION "E" FC NO: UCP2007-1643 DRWN:SDANNELLEY 2007/01/30 CHKD:DMORGAN 2007/02/01 APPR:SMILLER 2007/02/06	QUALITY SYMBOLS 	GENERAL TOLERANCES (UNLESS SPECIFIED)		DIMENSION STYLE		SCALE	DESIGN UNITS	THIRD ANGLE PROJECTION		
		mm		IN/MM		4:1	INCH			
		4 PLACES	± .010	± .010	DRAWN BY	DATE	TITLE			
		3 PLACES	± .010	± .010	JAS	1987/06/02	ASSEMBLY CONNECTOR BOX I.D. SINGLE ROW .100 GRID			
2 PLACES	± 0.25	± .014	CHECKED BY		DATE		MATERIAL NO.			
1 PLACE	± 0.35	± .014	MJM		1987/06/02		DOCUMENT NO.			
ANGULAR ±1/2°		APPROVED BY		DATE		SHEET NO.				
		WAZ		1987/06/02		1 OF 3				
DRAFT WHERE APPLICABLE MUST REMAIN WITHIN DIMENSIONS		SEE TABLE		SDA-70400-****						
		THIS DRAWING CONTAINS INFORMATION THAT IS PROPRIETARY TO MOLEX INCORPORATED AND SHOULD NOT BE USED WITHOUT WRITTEN PERMISSION								

	13	12	11	10	9	8	7	6	5	4	3	2	1
	OPTION "A"				OPTION "C"				OPTION "D"				
J	ENG. NO.	PLATING	WIRE SIZE		ENG. NO.	PLATING	WIRE SIZE		ENG. NO.	PLATING	WIRE SIZE		
	A-70400-3000-3023	TIN	22		A-70400-3035-3058	TIN	22		A-70400-3070-3093	TIN	22		
	A-70400-0001-0024	TIN	24		A-70400-0036-0059	TIN	24		A-70400-0071-0094	TIN	24		
	A-70400-0176-0199	TIN	26		A-70400-0211-0234	TIN	26		A-70400-0246-0269	TIN	26		
	A-70400-0351-0374	TIN	28		A-70400-0386-0409	TIN	28		A-70400-0421-0444	TIN	28		
I	A-70400-3175-3198	15 GOLD	22		A-70400-3210-3233	15 GOLD	22		A-70400-3245-3268	15 GOLD	22		
	A-70400-0526-0549	15 GOLD	24		A-70400-0561-0584	15 GOLD	24		A-70400-050 GOLD-0619	15 GOLD	24		
	A-70400-0701-0724	15 GOLD	26		A-70400-0736-0759	15 GOLD	26		A-70400-0771-0794	15 GOLD	26		
	A-70400-0876-0899	15 GOLD	28		A-70400-0911-0934	15 GOLD	28		A-70400-0946-0969	15 GOLD	28		
	A-70400-3350-3373	30 GOLD	22		A-70400-3385-3408	30 GOLD	22		A-70400-3420-3443	30 GOLD	22		
	A-70400-1051-1074	30 GOLD	24		A-70400-1086-1109	30 GOLD	24		A-70400-1121-1144	30 GOLD	24		
	A-70400-1226-1249	30 GOLD	26		A-70400-1261-1284	30 GOLD	26		A-70400-1296-1319	30 GOLD	26		
H	A-70400-1401-1424	30 GOLD	28		A-70400-1436-1459	30 GOLD	28		A-70400-1471-1494	30 GOLD	28		
									A-70400-4050-4073	50 GOLD	26		
G													
F	OPTION "G"				<p>PLATING PER ES-88:</p> <p>TIN - .000150 MINIMUM TIN OVER .000050 MINIMUM NICKEL PLATE.</p> <p>15 GOLD - .000015 MINIMUM GOLD PLATE IN SELECT AREA, .000075 MINIMUM TIN PLATE IN SELECT AREA, .000050 MINIMUM NICKEL PLATE OVERALL.</p> <p>30 GOLD - .000030 MINIMUM GOLD PLATE IN SELECT AREA, .000075 MINIMUM TIN PLATE IN SELECT AREA, .000050 MINIMUM NICKEL PLATE OVERALL.</p> <p>50 GOLD - .000050 MINIMUM GOLD PLATE IN SELECT AREA, .000075 MINIMUM TIN PLATE IN SELECT AREA, .000050 MINIMUM NICKEL PLATE OVERALL.</p> <p>TIN (P) - .000150 MINIMUM TIN OVER .000050 MINIMUM NICKEL PLATE. (PRE-PLATE)</p> <p>TIN DIP - .000020 MINIMUM HOT TIN DIP. (PRE-PLATE)</p>								
	ENG. NO.	PLATING	WIRE SIZE										
	A-70400-3140-3163	TIN	22										
	A-70400-0141-011N	TIN	24										
E	A-70400-0316-0339	TIN	26										
	A-70400-0491-0514	TIN	28										
	A-70400-2976-2999	15 GOLD	22										
	A-70400-0666-0689	15 GOLD	24										
	A-70400-0841-0864	15 GOLD	26										
	A-70400-1016-1039	15 GOLD	28										
	A-70400-3490-3513	30 GOLD	22										
D	A-70400-1191-1214	30 GOLD	24										
	A-70400-1366-1389	30 GOLD	26										
	A-70400-1541-1564	30 GOLD	28										
C													
B													
A													

REMOVE OPTION "E" EC NO: UCP2007-1643 DRAWN: DANIELLEY 2007/01/30 CHKD: BORGAN 2007/02/01 APPR: SMILLER 2007/02/06 REV N	QUALITY SYMBOLS 	GENERAL TOLERANCES (UNLESS SPECIFIED)		DIMENSION STYLE		SCALE	DESIGN UNITS	THIRD ANGLE PROJECTION
				IN/MM		4:1	INCH	
				DRAWN BY DATE		TITLE		
				CHECKED BY DATE		ASSEMBLY CONNECTOR BOX /I.D. SINGLE ROW - .100 GRID		
		APPROVED BY DATE		MATERIAL NO.		DOCUMENT NO.		SHEET NO.
		ANGULAR ±1/2°		SEE TABLE		SDA-70400-****		2 OF 3
		DRAFT WHERE APPLICABLE MUST REMAIN WITHIN DIMENSIONS		THIS DRAWING CONTAINS INFORMATION THAT IS PROPRIETARY TO MOLEX INCORPORATED AND SHOULD NOT BE USED WITHOUT WRITTEN PERMISSION				



OPTIONAL PIN WINDOW DETAIL
SCALE 20:1

OPTIONAL KNOCK-OUT DETAIL
SCALE 20:1

OPTIONAL CORE-OUT FOR HOUSING OPTIONS A,B,C,&D
CKT. SIZES 2-25
(FOR CONTROL OF BOW)

IST. CKT. IDENTIFICATION TO APPEAR AGAINST A (0.05-0.08)/.002-.003 DEEP MATTE FINISH BACKGROUND.
PART NO. 70066 (ALWAYS ON 2ND. CKT.)
CAVITY I.D.
OPTIONAL FIRST CIRCUIT IDENTIFICATION

OPTIONAL INNER CORE CORE-OUT

OPTIONAL CORE-OUT FOR HSG. OPTION "G" -CKT. SIZES 5,7,9,11,13,15,17,19,21,23,&25 (7 CKT. SHOWN)
(FOR CONTROL OF BOW)

OPTIONAL CORE-OUT FOR HSG. OPTION "G" -CKT. SIZES 6,8,10,12,14,16,18,20,22,&24 (8 CKT. SHOWN)
(FOR CONTROL OF BOW)

REMOVE OPTION "E"
FC NO: UCP2007-1643
DRAWN: DANIELLEY 2007/01/30
CHKD: BORGAN 2007/02/01
APPR: SMILLER 2007/02/06
REV N

QUALITY SYMBOLS
 = 0
 = 0

GENERAL TOLERANCES (UNLESS SPECIFIED)	
mm	INCH
4 PLACES ± ---	± ---
3 PLACES ± ---	± ---
2 PLACES ± ---	± ---
1 PLACE ± ---	± ---
ANGULAR ±1/2°	

DRAFT WHERE APPLICABLE MUST REMAIN WITHIN DIMENSIONS

DIMENSION STYLE	
IN/MM	
DRAWN BY	DATE
JAS	1987/06/01
CHECKED BY	DATE
MJM	1987/06/01
APPROVED BY	DATE
WAZ	1987/06/01
MATERIAL NO.	
SEE TABLE	

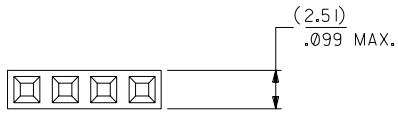
SCALE	DESIGN UNITS	THIRD ANGLE PROJECTION
4:1	INCH	
ASSEMBLY CONNECTOR BOX I.D. SINGLE ROW -.100 GRID		
MOLEX INCORPORATED		SHEET NO. 3 OF 3
DOCUMENT NO. SDA-70400-****		

OPTION A

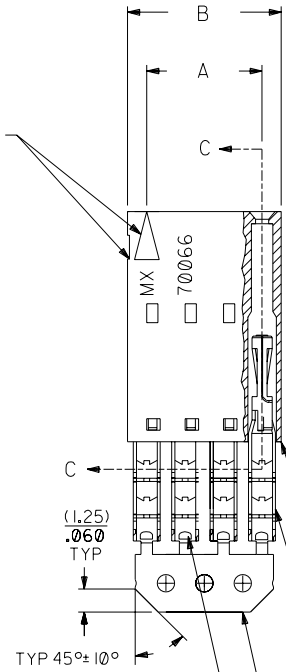
NOTES:

- 1) TO BE USED WITH (22) AWG. STRANDED WIRE WITH (1.35)/.053 DIA. MAX. INSULATION.
- 2) SEE CHART FOR CIRCUIT SIZES.
- 3) STANDARD PACKAGING PER PK-70400-0001. OPTIONAL PACKAGING MAY BE AVAILABLE, REQUEST DWG. PK-70400
- 4) PARTS STACKABLE END TO END AND SIDE BY SIDE ON (2.54)/.100 CENTERS.
- 5) REFER TO PRODUCT SPECIFICATION: PS-70400.
- 6) SEE DWG. SDA-70400-***** (SHT. 5) FOR OPTIONAL HOUSING DETAILS.
- 7) 4 CIRCUIT SHOWN.
- 8) TO MATE WITH MOLEX (2.54)/.100 CENTERLINE HEADERS.

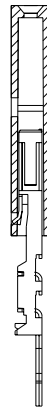
9) 2 CIRCUIT ASSEMBLIES SUPPLIED AS GROUPED PAIRS.



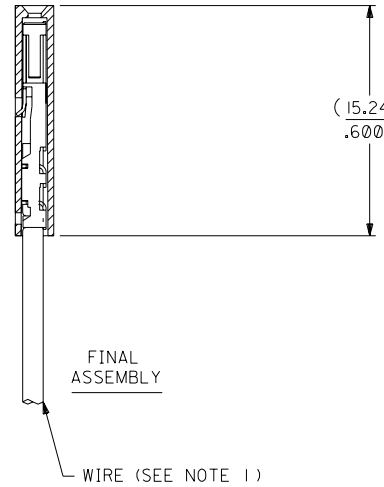
CIRCUIT NO. 1
SLOT OR ARROW



SECTION C-C



PRE-LOADED ASSEMBLY



FINAL ASSEMBLY

HOUSING PART NO. 70066-*****
MATERIAL: G.F. POLYESTER, 94V-0

TERMINAL PART NO. 70028-*****
MATERIAL: PHOSPHOR BRONZE
PLATING PER ES-88-***

TIN - .000150 MIN. TIN OVER
.000050 MIN. NICKEL PLATE.

*THE PRIMARY SHIPPING CARTON WILL BE LABELED "COMPLIANT TO
ROHS DIRECTIVE 2002/95/EC AND ELV ANNEX II OF DIRECTIVE 2000/53/EC".
CARTONS WITHOUT THIS LABEL MAY CONTAIN PRODUCT WITH LEAD.

I.D. SLOT CODE TO WIRE GAUGE CHART	
I.D. SLOT CODE	WIRE GAUGE
D	22 AWG.

PLATING CODE (STRIPE ON CARRIER STRIP)	
PLATING	COLOR
TIN	NONE

CKT. SIZE	DIMENSIONS (INCH)		EDP. NO.	ENG. NO.
	A	B		
2	(2.54) .100	(5.05) .199	14-56-6029	A-70400-3000
3	(5.08) .200	(7.59) .299	14-56-6039	A-70400-3001
4	(7.62) .300	(10.13) .399	14-56-6049	A-70400-3002
5	(10.16) .400	(12.67) .499	14-56-6059	A-70400-3003
6	(12.70) .500	(15.21) .599	14-56-6069	A-70400-3004
7	(15.24) .600	(17.75) .699	14-56-6079	A-70400-3005
8	(17.78) .700	(20.29) .799	14-56-6089	A-70400-3006
9	(20.32) .800	(22.83) .899	14-56-6099	A-70400-3007
10	(22.86) .900	(25.37) .999	14-56-6109	A-70400-3008
11	(25.54) 1.000	(27.91) 1.099	14-56-6119	A-70400-3009
12	(27.94) 1.100	(30.45) 1.199	14-56-6129	A-70400-3010
13	(30.48) 1.200	(32.99) 1.299	14-56-6139	A-70400-3011
14	(33.02) 1.300	(35.53) 1.399	14-56-6149	A-70400-3012
15	(35.56) 1.400	(38.07) 1.499	14-56-6159	A-70400-3013
16	(38.01) 1.500	(40.61) 1.599	14-56-6169	A-70400-3014
17	(40.64) 1.600	(43.15) 1.699	14-56-6179	A-70400-3015
18	(43.18) 1.700	(45.69) 1.799	14-56-6189	A-70400-3016
19	(45.72) 1.800	(48.23) 1.899	14-56-6199	A-70400-3017
20	(48.26) 1.900	(50.77) 1.999	14-56-6209	A-70400-3018
21	(50.80) 2.000	(53.31) 2.099	14-56-6219	A-70400-3019
22	(53.34) 2.100	(55.85) 2.199	14-56-6229	A-70400-3020
23	(55.88) 2.200	(58.39) 2.299	14-56-6239	A-70400-3021
24	(58.42) 2.300	(60.93) 2.399	14-56-6249	A-70400-3022
25	(60.96) 2.400	(63.47) 2.499	14-56-6259	A-70400-3023

REV.	DATE	BY	CHK'D.	SCALE
E	07/07/93	REED	WAZ	4:1
D	07/07/93	REED	WAZ	4:1
C	10-17-88	AAB	WAZ	4:1
B	2/3/88	MJM	WAZ	4:1
A	10-26-87	AAB	WAZ	4:1

DIMENSIONS SHOWN (METRIC) INCH	
3 PLACE	INCH METRIC
± .010	± 0.25
± .014	± 0.35

TITLE		MFG. SH. REV.	
ASSEMBLY, SL CONNECTOR (SINGLE ROW- (2.54)/.100 GRID)		REVISE ONLY ON CAD SYSTEM	
MOLEX INCORPORATED		SHEET NO.	DATE
LITSE, ILL. 60532		U.S.A.	10/26/87
PART NO. SDA-70400-3000-3023		DRWG. NO.	
SEE CHART		FILE NAME	DRWG. NO.
74003000		DA	DA