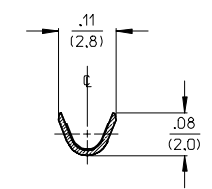
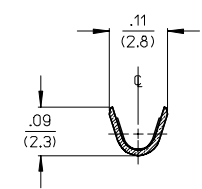
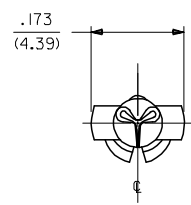
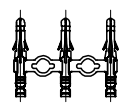


PART NO.	ENG. NO.
02-09-2136	2870-(P90)I
02-09-2137	2870-(P90)IL
02-09-2138	2870-(P90)II

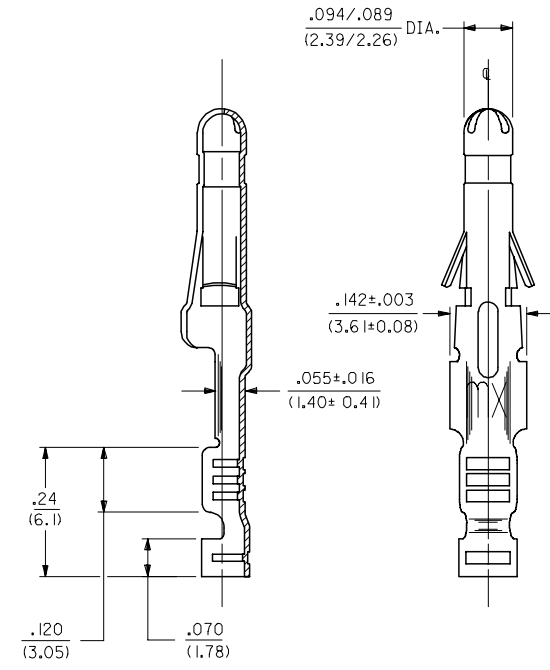
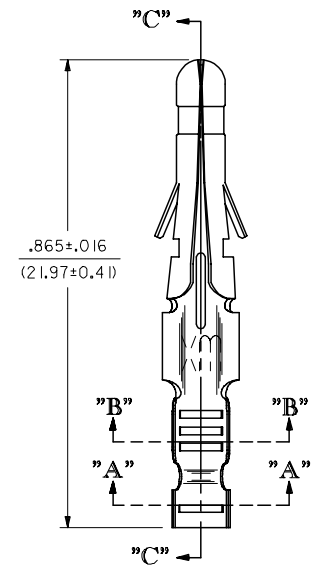
CHAIN FORM
FULL SCALE



SECTION "A-A"

SECTION "B-B"

LEGEND
 2870-(****)*
 P = PREPLATE
 BLANK = POSTPLATE
 FORM BLANK = CHAIN
 L = LOOSE
 I = WITH PAPER INTERLEAF
 FINISH CODE (SEE NOTE 2)



SECTION "C-C"

- NOTES:
- MATERIAL: CARTRIDGE BRASS
 - FINISH:
901 - HOT TIN DIP .000020/(0.00051) MIN.
 - PRODUCT SPECIFICATION: PS-02-09
 - TERMINAL FOR USE WITH .093/(2.36) SERIES HOUSINGS AND WILL ACCEPT 22 THRU 24 AWG WIRE.
 - INSERTION FORCE: 3.5 LBS. MAX. WHEN TERMINAL IS INSERTED INTO AN .093/(2.36) SERIES HOUSING.
 - RETENTION: 20 LBS. MIN. FROM HOUSING.

CORRECT DIMS. E.C. NO: UCP2005-2499 DRAWN: J LONE 2005/07/06 CHKD: ADERR 2005/07/13 APPR: FSM TH 2005/07/14	QUALITY SYMBOLS =0 =0	GENERAL TOLERANCES (UNLESS SPECIFIED)		DIMENSION STYLE IN/MM		SCALE 6:1	DESIGN UNITS INCH	THIRD ANGLE PROJECTION	
		mm	INCH	DRAWN BY JWC	DATE 6/12/92	CRIMP TERMINAL, MALE .093/(2.36) DIA. FOR 22 THRU 24 AWG WIRE			
		4 PLACES ± --- ± ---	± --- ± ---	CHECKED BY RW	DATE 6/12/92				
		3 PLACES ± --- ± .010	± .010 ± .014	APPROVED BY JWF	DATE 6/12/92	MOLEX INCORPORATED			
2 PLACES ± 0.25 ± .014	± .014 ± ---	MATERIAL NO.	DOCUMENT NO.	SD-2870-*		SHEET NO. 1 OF 1			
1 PLACE ± 0.35 ± ---	± --- ± ---	DRAFT WHERE APPLICABLE MUST REMAIN WITHIN DIMENSIONS		SEE CHART		THIS DRAWING CONTAINS INFORMATION THAT IS PROPRIETARY TO MOLEX INCORPORATED AND SHOULD NOT BE USED WITHOUT WRITTEN PERMISSION			
ANGULAR ±1/2°	± --- ± ---	SIZE C							