

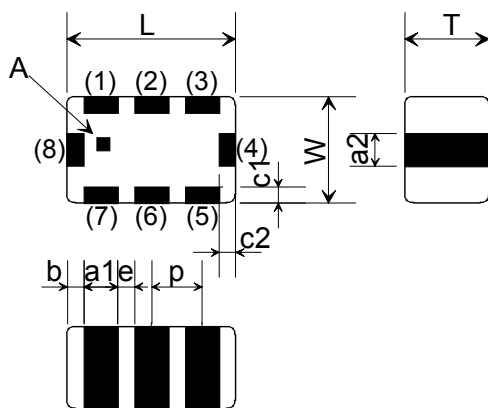
## LOW PASS FILTER (Preliminary)

### 1. Characteristics ( at -40 ~ + 85 °C )

Part Number	New Name	LFL21915MTC1A027
	Old Name	LFTC15N19E0915B
Nominal Characteristics Impedance		50 Ω
Nominal Center Frequency		915.00 MHz
Pass Band Range (BW)		$f_0 \pm 13.00$ MHz
Insertion Loss in BW		0.47 dB max. at 25 °C 0.50 dB max. at -40 ~ +85 °C
Attenuation (Absolute value)		30.0 dB min. at $2 \times f_0$ MHz 30.0 dB min. at $3 \times f_0$ MHz
V.S.W.R. in BW		1.50 max.
Power Capacity		3.0 W max.

### 2. Construction,Dimensions&Marking

### 3. Land Pattern



Mark	Meaning
A	Directional Input Mark

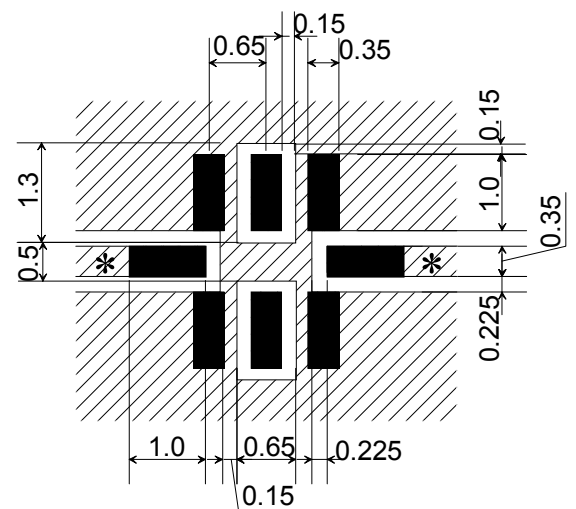
(in mm)

Mark	Dimension	Mark	Dimension	Mark	Dimension
L	2.00±0.15	a2	0.30+0.10/-0.15	e	0.35±0.10
W	1.25±0.10	b	0.20±0.15	p	0.65±0.05
T	0.95±0.10	c1	0.3+0.1/-0.2		
a1	0.30+0.10/-0.15	c2	0.3+0.1/-0.2		

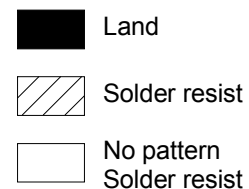
#### TERMINAL CONFIGURATION

Terminal No.	Terminal Name	Terminal No.	Terminal Name
(1)	GND	(5)	GND
(2)	NC	(6)	NC
(3)	GND	(7)	GND
(4)	OUT	(8)	IN

\*Terminal of "NC" should be fixed to the no connected pattern.



(in mm)



\*Line width to be designed to match 50Ω characteristic impedance, depending on PCB material and thickness.