

74 Series TTL *See outline drawings Nos. 109, 111 or 114 (as applicable for 14 pin, 16 pin package etc.) for physical dimensions.*

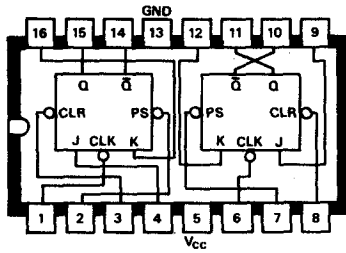
| REFERENCE TABLE Code | Function | Stock No. | Connection Diagram No. |
|----------------------|---|-----------|------------------------|
| DM7427N | Triple 3 NOR Gate | 33005X | B24 |
| DM7430N | Eight Input NAND Gate | 19603A | B26 |
| DM7432N | Quad 2 OR Gate | 29347B | B27 |
| DM7437N | Quad 2 NAND Buffer | 33006R | B29 |
| DM7438N | Quad 2 NAND Buffer (Open Collector) | 33007G | B30 |
| DM7440N | Dual 4 NAND Buffer | 19604X | B31 |
| DM7441AN | Nixie Driver | 19632B | B32 |
| DM7442N | BCD To Decimal Decoder | 19633X | B33 |
| DM7445N | BCD To Decimal Decoder/Driver | 29350A | B36 |
| DM7446N | BCD To 7-Segment Decoder Driver | 29351X | B37 |
| DM7446AN | 40MA Version of DM7446N | 33008E | B37 |
| DM7447N | BCD To 7-Segment Decoder Driver | 29390G | B38 |
| DM7447AN | 40MA Version of DM7447N | 33009C | B38 |
| DM7448N | BCD To 7-Segment Decoder/Driver | 29352H | B39 |
| DM7450N | EXP Dual 2-Input AND-OR-INVERT Gate | 19635G | B40 |
| DM7451N | Dual 2-Input AND-OR-INVERT Gate | 19605H | B41 |
| DM7453N | EXP 2-Input AND-OR-INVERT Gate | 19606F | B43 |
| DM7454N | 2-Input AND-OR-INVERT Gate | 19607D | B44 |
| DM7460N | Dual 4-Input Expander | 19609X | B46 |
| DM7470N | J.K. Flip-Flop | 33010F | B51 |
| DM7472N | J.K. Flip-Flop (Master/Slave) | 19634R | B53 |
| DM7473N | Dual J.K. Flip-Flop (Master/Slave) | 19616B | B54 |
| DM7474N | Dual J.K. Flip-Flop | 19615D | B55 |
| DM7475N | Quad Latch | 19621H | B56 |
| DM7476N | Dual K.J. Flip-Flop (Master/Slave) | 19614F | B57 |
| DM7483N | 4-Bit Adder | 19613H | B62 |
| DM7485N | 4-BIT Comparator | 33011D | B64 |
| DM7486N | Quad Exclusive OR Gate | 19608B | B65 |
| DM7489N | 64-BIT RAM | 29360H | B67 |
| DM7490N | Decade Counter | 19618R | B68 |
| DM7491AN | 8-BIT Shift Register | 29356X | B69 |
| DM7492N | Divide-By-Twelve Counter | 19619G | B70 |
| DM7493N | 4-BIT Binary Counter | 19620X | B71 |
| DM7495N | 4-Bit Right-Shift Left-Shift Register | 19625X | B73 |
| DM7496N | 5-BIT Parallel-In Parallel-Out Shift Register | 29357R | B74 |
| DM7497N | Binary Rate Multiplier | 33012B | B75 |
| DM74107N | Dual J-K Flip-Flop | 29348X | B80 |
| DM74121N | One Shot Multivibrator | 29349R | B87 |
| DM74123N | Dual One Shot Multivibrator | 33013X | B89 |
| DM74125N | TRI-STATE Buffer | 30533X | B91 |
| DM74126N | TRI-STATE Buffer | 30610F | B92 |
| DM74141N | Nixie Driver | 31004A | B100 |

MANUFACTURER'S CURRENT LIST PRICES ARE ALWAYS CHARGED

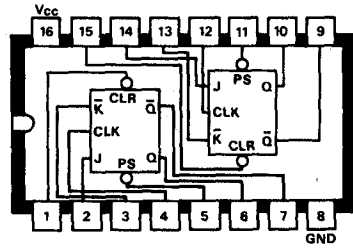
Semiconductors

Connection Diagrams

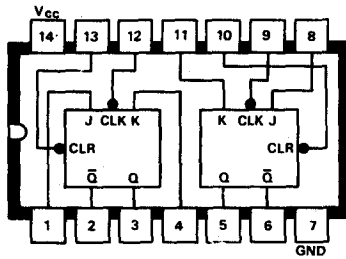
B79 SN74H106N
Dual J-K flip-flop
with preset and clear inputs



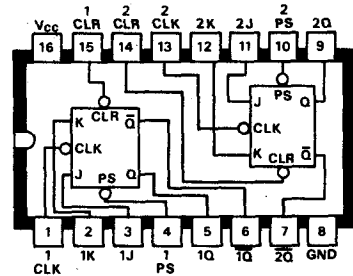
B82 SN74109N
Dual J-K flip-flop edge triggered



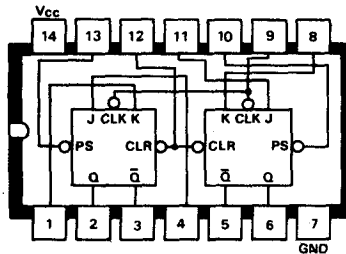
B80 SN74107N
SN74C107N
Dual J-K master-slave flip-flop
with preset and clear



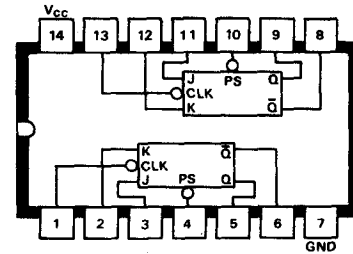
B83 SN74S112N
Dual J-K master-slave flip-flop



B81 SN74H108N/SN74S108N
Dual J-K flip-flop
with preset and clear inputs



B84 SN74S113N
Dual J-K master-slave flip-flop



MANUFACTURER'S CURRENT LIST PRICES ARE ALWAYS CHARGED