

HIGH POWERED MULTI-LINE VSIP® TVS ARRAY



10 PIN VSIP® PACKAGE

DESCRIPTION

The VSIP Series are high powered multi-line TVS arrays available in a 10 pin VSIP package. This series is designed to protect telecommunications equipment from the damaging effects of ESD, EFT and secondary transient threats.

The VSIP Series "A" has a peak pulse power rating of 800 Watts for an 8/20 μ s waveshape and the VSIP Series "B" has a peak pulse power rating of 3400 Watts for an 8/20 μ s waveshape. These devices meet the IEC 61000-4-2, IEC 61000-4-4 and IEC 61000-4-5 requirements.

FEATURES

- Compatible with IEC 61000-4-2 (ESD): Air - 15kV, Contact - 8kV
- Compatible with IEC 61000-4-4 (EFT): 40A - 5/50ns
- Compatible with IEC 61000-4-5 (Surge): 24A, 8/20 μ s - Level 2(Line-Gnd) & Level 3(Line-Line)
- Series "A" - 800 Watts Peak Pulse Power per Line (tp = 8/20 μ s)
- Series "B" - 3400 Watts Peak Pulse Power per Line (tp = 8/20 μ s)
- Bidirectional Configuration
- ESD Protection > 25 kilovolts
- High Surge Capability & Low Capacitance Option
- Available in Multiple Voltages
- Protects 8 to 9 Bidirectional Lines
- RoHS Compliant
- REACH Compliant

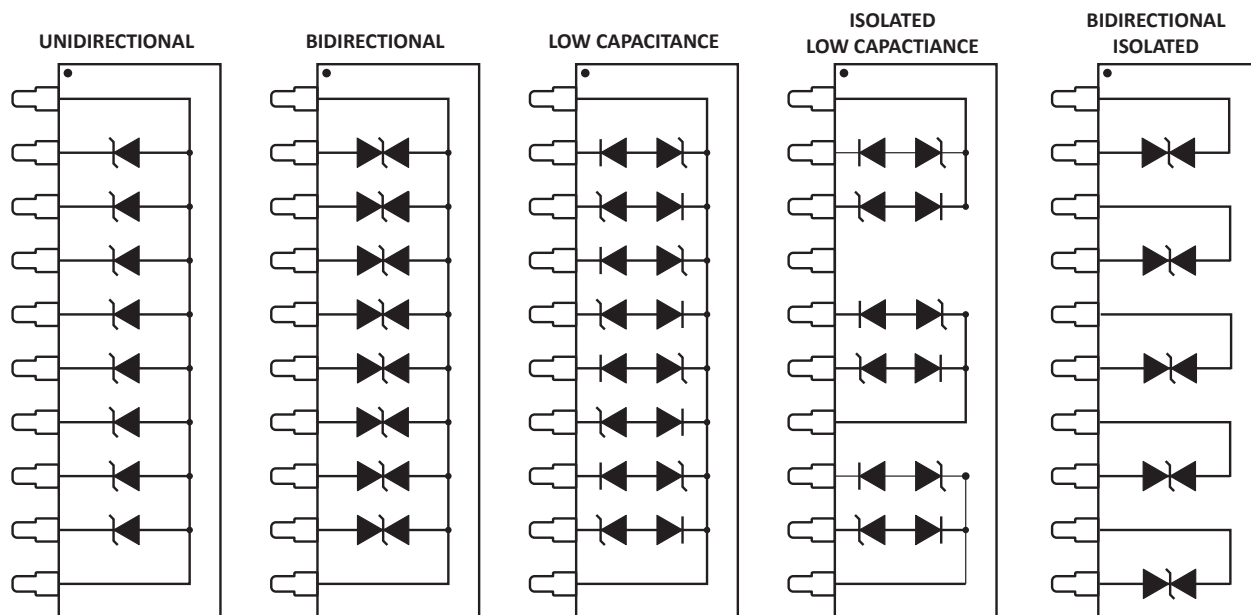
APPLICATIONS

- RS-232 & RS-423 Data Lines
- Telecommunications T/R Protection: ISDN, xDSL, V.34/V.90, HDLC, T1/E1 & T3/E3
- Low & High Speed Data Lines: Ethernet & Token Ring
- I/O Port Protection

MECHANICAL CHARACTERISTICS

- Molded 10 Pin Plastic VSIP® Package
- Approximate Weight: 1.5 grams
- Lead-Free Pure-Tin Plating (Annealed)
- Solder Reflow Temperature:
Pure-Tin - Sn, 100: 260-270°C
- Flammability Rating UL 94V-0

PIN CONFIGURATIONS



TYPICAL DEVICE CHARACTERISTICS
MAXIMUM RATINGS @ 25°C Unless Otherwise Specified

PARAMETER	SYMBOL	VALUE	UNITS
Series "A" Peak Pulse Power (tp = 8/20µs) - See Figure 1	P _{PP}	800	Watts
Series "B" Peak Pulse Power (tp = 8/20µs) - See Figure 1	P _{PP}	3400	Watts
Operating Temperature	T _L	-55 to 150	°C
Storage Temperature	T _{STG}	-55 to 150	°C

SERIES "A" ELECTRICAL CHARACTERISTICS PER LINE @ 25°C Unless Otherwise Specified

PART NUMBER (Note 1-5)	RATED STAND-OFF VOLTAGE V _{WM} VOLTS	MINIMUM BREAKDOWN VOLTAGE @1mA V _(BR) VOLTS	MAXIMUM CLAMPING VOLTAGE (Fig. 2) @ IP = 1A V _C VOLTS	MAXIMUM CLAMPING VOLTAGE (Fig. 2) @ IP = 10A V _C VOLTS	MAXIMUM LEAKAGE CURRENT @V _{WM} I _D µA	MAXIMUM PEAK PULSE CURRENT (Fig. 2) I _{PP} amps
VS10P05	5.0	6.0	9.8	12.5	100	45
VS10P05C	5.0	6.0	9.8	12.5	100	45
VS10P05CI	5.0	6.0	9.8	12.5	100	45
VS10P05LC	5.0	6.0	9.8	12.5	100	45
VS10P05LCI	5.0	6.0	9.8	12.5	100	45
VS10P08	8.0	8.5	13.4	16.6	10	40
VS10P08C	8.0	8.5	13.4	16.6	10	40
VS10P08CI	8.0	8.5	13.4	16.6	10	40
VS10P08LC	8.0	8.5	13.4	16.6	10	40
VS10P08LCI	8.0	8.5	13.4	16.6	10	40
VS10P12	12.0	13.3	19.5	22.7	1	34
VS10P12C	12.0	13.3	19.5	22.7	1	34
VS10P12CI	12.0	13.3	19.5	22.7	1	34
VS10P12LC	12.0	13.3	19.5	22.7	1	34
VS10P12LCI	12.0	13.3	19.5	22.7	1	34
VS10P15	15.0	16.7	24.4	28.5	1	27
VS10P15C	15.0	16.7	24.4	28.5	1	27
VS10P15CI	15.0	16.7	24.4	28.5	1	27
VS10P15LC	15.0	16.7	24.4	28.5	1	27
VS10P15LCI	15.0	16.7	24.4	28.5	1	27
VS10P24	24.0	26.7	39.1	45.6	1	22
VS10P24C	24.0	26.7	39.1	45.6	1	22
VS10P24CI	24.0	26.7	39.1	45.6	1	22
VS10P24LC	24.0	26.7	39.1	45.6	1	22
VS10P24LCI	24.0	26.7	39.1	45.6	1	22

TYPICAL DEVICE CHARACTERISTICS
SERIES "B" ELECTRICAL CHARACTERISTICS PER LINE @ 25°C Unless Otherwise Specified

PART NUMBER (Note 1-5)	RATED STAND-OFF VOLTAGE	MINIMUM BREAKDOWN VOLTAGE	MAXIMUM CLAMPING VOLTAGE (Fig. 2)	MAXIMUM CLAMPING VOLTAGE (Fig. 2)	MAXIMUM LEAKAGE CURRENT	MAXIMUM PEAK PULSE CURRENT (Fig. 2)
	V_{WM} VOLTS	@1mA $V_{(BR)}$ VOLTS	@ IP = 1A V_C VOLTS	@ IP = 10A V_C VOLTS	@ V_{WM} I_D μA	I_{PP} amps
VSB10P05	5.0	6.0	8.6	9.1	300	300
VSB10P05C	5.0	6.0	8.6	9.1	300	300
VSB10P05CI	5.0	6.0	8.6	9.1	300	300
VSB10P05LC	5.0	6.0	8.6	9.1	300	300
VSB10P05LCI	5.0	6.0	8.6	9.1	300	300
VSB10P08	8.0	8.5	10.9	12.0	200	258
VSB10P08C	8.0	8.5	10.9	12.0	200	258
VSB10P08CI	8.0	8.5	10.9	12.0	200	258
VSB10P08LC	8.0	8.5	10.9	12.0	200	258
VSB10P08LCI	8.0	8.5	10.9	12.0	200	258
VSB10P12	12.0	13.3	17.0	18.8	2	184
VSB10P12C	12.0	13.3	17.0	18.8	2	184
VSB10P12CI	12.0	13.3	17.0	18.8	2	184
VSB10P12LC	12.0	13.3	17.0	18.8	2	184
VSB10P12LCI	12.0	13.3	17.0	18.8	2	184
VSB10P15	15.0	16.7	21.4	23.6	2	147
VSB10P15C	15.0	16.7	21.4	23.6	2	147
VSB10P15CI	15.0	16.7	21.4	23.6	2	147
VSB10P15LC	15.0	16.7	21.4	23.6	2	147
VSB10P15LCI	15.0	16.7	21.4	23.6	2	147
VSB10P24	24.0	26.7	34.2	37.8	2	111
VSB10P24C	24.0	26.7	34.2	37.8	2	111
VSB10P24CI	24.0	26.7	34.2	37.8	2	111
VSB10P24LC	24.0	26.7	34.2	37.8	2	111
VSB10P24LCI	24.0	26.7	34.2	37.8	2	111
VSB10P28	28.0	31.1	39.8	44.0	2	93
VSB10P28C	28.0	31.1	39.8	44.0	2	93
VSB10P28CI	28.0	31.1	39.8	44.0	2	93
VSB10P28LC	28.0	31.1	39.8	44.0	2	93
VSB10P28LCI	28.0	31.1	39.8	44.0	2	93

TYPICAL DEVICE CHARACTERISTICS
SERIES "B" ELECTRICAL CHARACTERISTICS PER LINE @ 25°C Unless Otherwise Specified

PART NUMBER (Note 1-5)	RATED STAND-OFF VOLTAGE V_{WM} VOLTS	MINIMUM BREAKDOWN VOLTAGE	MAXIMUM CLAMPING VOLTAGE (Fig. 2)	MAXIMUM CLAMPING VOLTAGE (Fig. 2)	MAXIMUM LEAKAGE CURRENT	MAXIMUM PEAK PULSE CURRENT (Fig. 2)
		@1mA $V_{(BR)}$ VOLTS	@ IP = 1A V_C VOLTS	@ IP = 10A V_C VOLTS	@ V_{WM} I_D μA	I_{PP} amps
VSB10P33	33.0	36.7	47.0	51.9	2	83
VSB10P33C	33.0	36.7	47.0	51.9	2	83
VSB10P33CI	33.0	36.7	47.0	51.9	2	83
VSB10P33LC	33.0	36.7	47.0	51.9	2	83
VSB10P33LCI	33.0	36.7	47.0	51.9	2	83
VSB10P36	36.0	40.0	51.2	56.6	2	68
VSB10P36C	36.0	40.0	51.2	56.6	2	68
VSB10P36CI	36.0	40.0	51.2	56.6	2	68
VSB10P36LC	36.0	40.0	51.2	56.6	2	68
VSB10P36LCI	36.0	40.0	51.2	56.6	2	68

NOTES

1. The "C" suffix denotes a bidirectional device, such as VSB10P5C.
2. Forward voltage (Unidirectional Configurations Only): $V_f = 1.5V @ 200mA$.
3. The "CI" suffix denotes bidirectional isolated device, such as VSB10P05CI.
4. The "LC" suffix denotes a low capacitance device, such as VSB10P05LC. These devices have a capacitance of 100pF.
5. The "LCI" suffix denotes an isolated low capacitance device, such as VSB10P05LCI.

TYPICAL DEVICE CHARACTERISTICS

FIGURE 1
PEAK PULSE POWER VS PULSE TIME

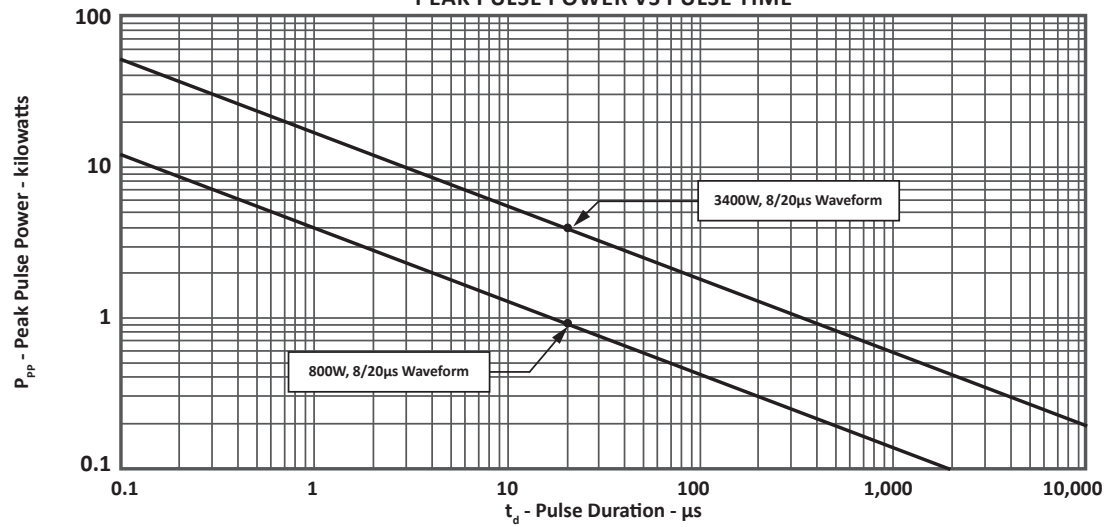
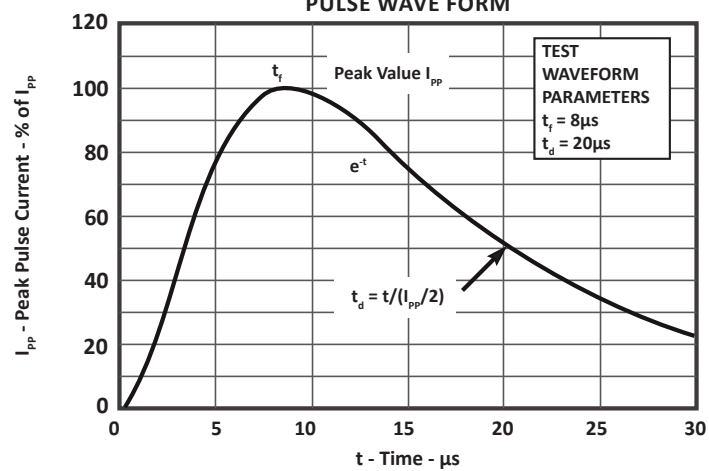
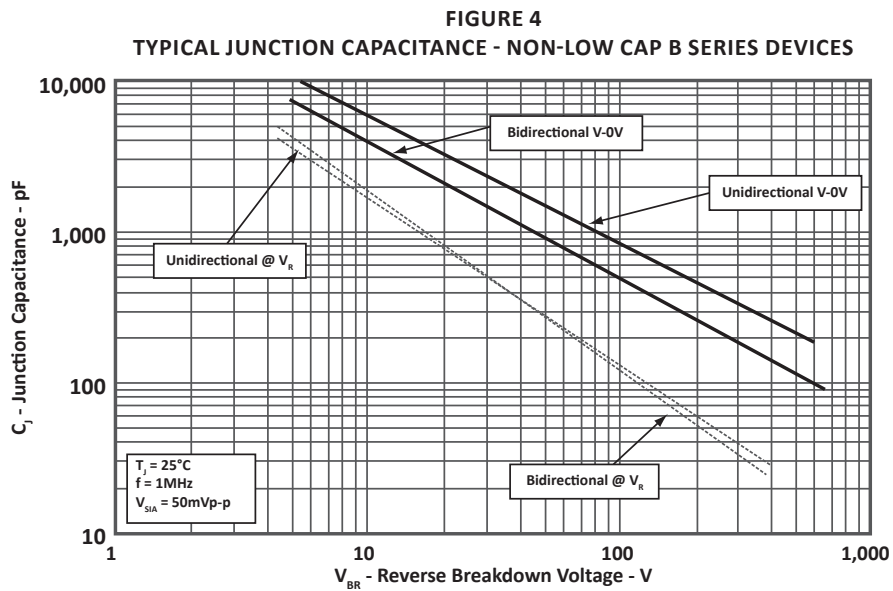
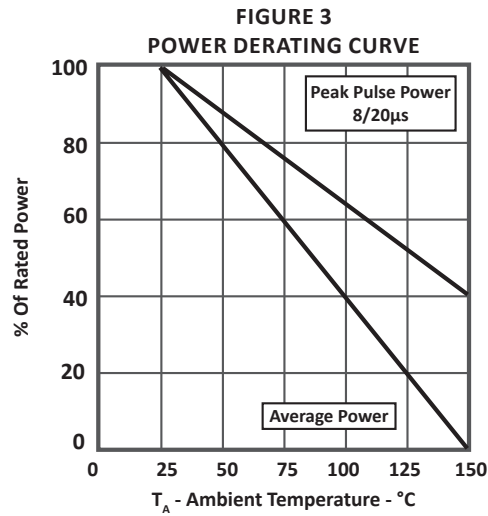


FIGURE 2
PULSE WAVE FORM



TYPICAL DEVICE CHARACTERISTICS



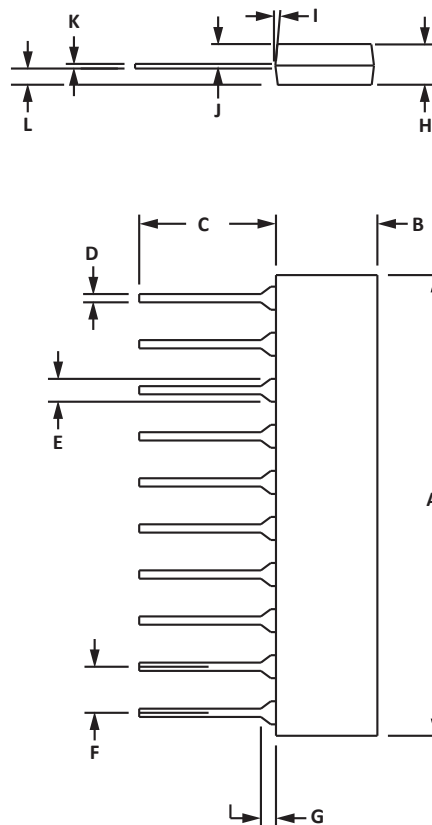
10 PIN VSIP PACKAGE INFORMATION

OUTLINE DIMENSIONS

DIM	MILLIMETERS		INCHES	
	MIN	MAX	MIN	MAX
A	25.65	26.01	1.01	1.024
B	5.68	6.45	0.244	0.254
C	5.92	6.73	0.233	0.265
D	0.406	0.508	0.016	0.020
E	1.27	1.65	0.05	0.065
F	2.49	2.59	0.098	0.102
G	0.38	1.40	0.015	0.055
H	2.65	3.17	0.104	0.125
I	7° TYP	7° TYP	7° TYP	7° TYP
J	1.47	1.98	0.058	0.078
K	0.20	0.30	0.008	0.012
L	0.81	1.57	0.032	0.062

NOTES

1. Dimensions are exclusive of mold flash and metal burrs.
2. Controlling dimensions in inches.



ORDERING INFORMATION

BASE PART NUMBER (xx = Voltage)	LEADFREE SUFFIX	TAPE SUFFIX	QTY/REEL	REEL SIZE	TUBE QTY
VS10Pxx/VSB10Pxx	-LF	n/a	n/a	n/a	18
VS10PxxC/VSB10PxxC	-LF	n/a	n/a	n/a	18
VS10PxxCI/VSB10PxxCI	-LF	n/a	n/a	n/a	18
VS10PxxLC/VSB10PxxLC	-LF	n/a	n/a	n/a	18
VS10PxxLCI/VSB10PxxLCI	-LF	n/a	n/a	n/a	18

NOTES

1. Marking on Part - logo, part number, date code and pin one defined by dot on top of package.
2. This device available only in a lead-free configuration.

COMPANY INFORMATION

COMPANY PROFILE

In business more than 20 years, ProTek Devices™ is a privately held semiconductor company. The company offers a product line of overvoltage protection and overcurrent protection components. These include transient voltage suppressor array (TVS arrays) avalanche breakdown diode, steering diode TVS array and electronics SMD chip fuses. These components deliver circuit protection in electronic systems from numerous overvoltage and overcurrent events. They include lightning; electrostatic discharge (ESD); nuclear electromagnetic pulses (NEMP); inductive switching; and electromagnetic interference (EMI) / radio frequency interference (RFI). ProTek Devices also offers high performance interface and linear products. They include analog switches; multiplexers; LED drivers; LED wafer die for ESD protection; audio control ICs; RF and related high frequency products.

CONTACT US

Corporate Headquarters

2929 South Fair Lane
Tempe, Arizona 85282
USA

By Telephone

General: 602-431-8101
Sales: & Marketing: 602-414-5109
Customer Service: 602-414-5114
Product Technical Support: 602-414-5107

By Fax

General: 602-431-2288

By E-mail:

Asia Sales: asiasales@protekdevices.com
Europe Sales: europesales@protekdevices.com
U.S. Sales: ussales@protekdevices.com
Distributor Sales: distysales@protekdevices.com
Customer Service: service@protekdevices.com
Technical Support: support@protekdevices.com

ProTek Devices (Asia Pacific) Pte. Ltd.

8 Ubi Road 2, #06-19
Zervex
Singapore - 408538
Tel: +65-67488312
Fax: +65-67488313

Web

www.protekdevices.com

COPYRIGHT © ProTek Devices 1998 - This literature is subject to all applicable copyright laws and is not for resale in any manner.

SPECIFICATIONS: ProTek reserves the right to change the electrical and or mechanical characteristics described herein without notice.

DESIGN CHANGES: ProTek reserves the right to discontinue product lines without notice and that the final judgement concerning selection and specifications is the buyer's and that in furnishing engineering and technical assistance. ProTek assumes no responsibility with respect to the selection or specifications of such products. ProTek makes no warranty, representation or guarantee regarding the suitability of its products for any particular purpose, nor does ProTek assume any liability arising out of the application or use of any product or circuit and specifically disclaims any and all liability without limitation special, consequential or incidental damages.

LIFE SUPPORT POLICY: ProTek Devices products are not authorized for use in life support systems without written consent from the factory.