

# 54/74 FAMILIES OF COMPATIBLE TTL CIRCUITS

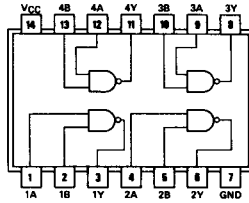
## PIN ASSIGNMENTS (TOP VIEWS)

### QUADRUPLE 2-INPUT POSITIVE-NAND GATES

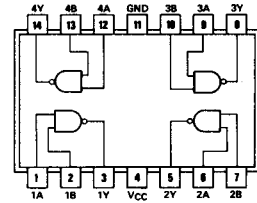
**00**

positive logic:  
 $Y = \overline{AB}$

See page 6-2



SN5400 (J) SN7400 (J, N)  
~~SN5400B (J)~~ ~~SN7400B (J, N)~~  
~~SN5400C (J)~~ ~~SN7400C (J, N)~~  
~~SN5400D (J, M)~~ ~~SN7400D (J, N)~~  
~~SN5400E (J, W)~~ ~~SN7400E (J, N)~~



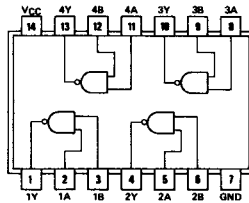
SN5400 (W)  
~~SN7400 (W)~~  
~~SN5400 (Y)~~

### QUADRUPLE 2-INPUT POSITIVE-NAND GATES WITH OPEN-COLLECTOR OUTPUTS

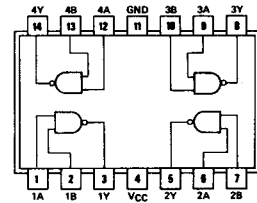
**01**

positive logic:  
 $Y = \overline{AB}$

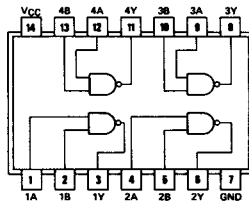
See page 6-4



SN5401 (W) SN7401 (W, N)  
~~SN5401B (W)~~ ~~SN7401B (W, N)~~



SN5401 (W)  
~~SN7401 (W)~~  
~~SN5401 (E)~~



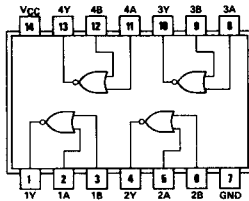
SN5402 (J) SN7402 (J, N)

### QUADRUPLE 2-INPUT POSITIVE-NOR GATES

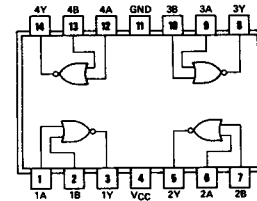
**02**

positive logic:  
 $Y = \overline{A+B}$

See page 6-8



SN5402 (W) SN7402 (W, N)  
~~SN5402B (W)~~ ~~SN7402B (W, N)~~  
~~SN5402C (W, M)~~ ~~SN7402C (W, N)~~  
~~SN5402D (W)~~ ~~SN7402D (W, N)~~



SN5402 (W)  
~~SN7402 (W)~~  
~~SN5402 (Y)~~