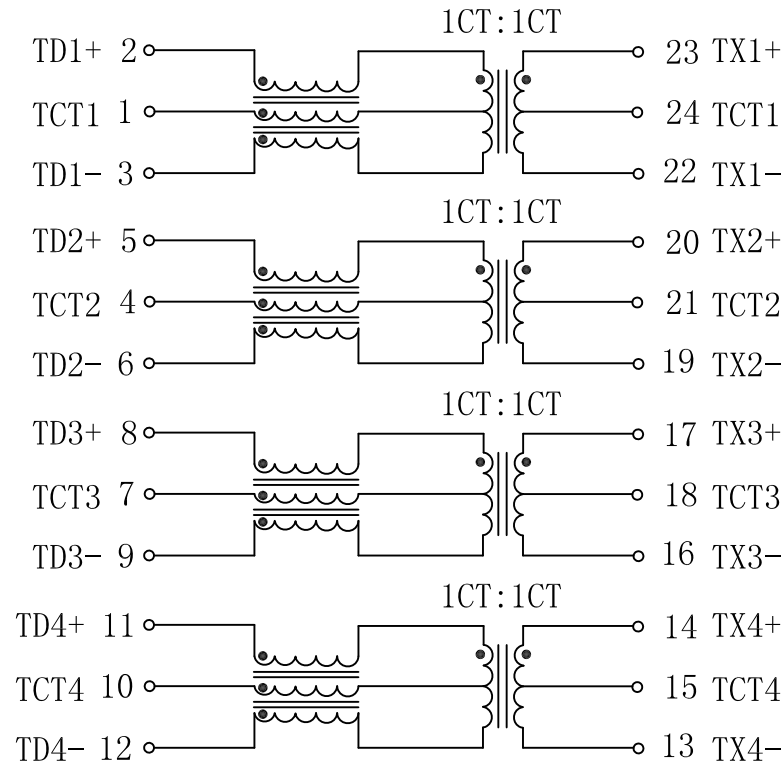


Schematic:

REV.	ECN NO.	DESCRIPTION	DATE	APPD
A	REL		2010/10/21	



Electrical Specifications @25°C

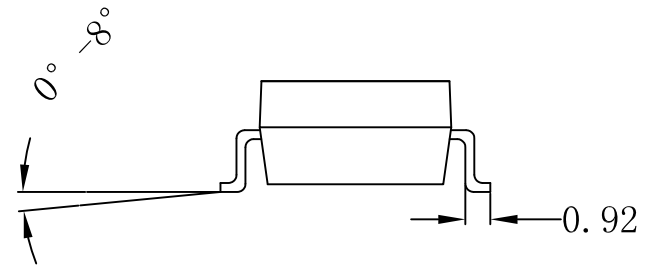
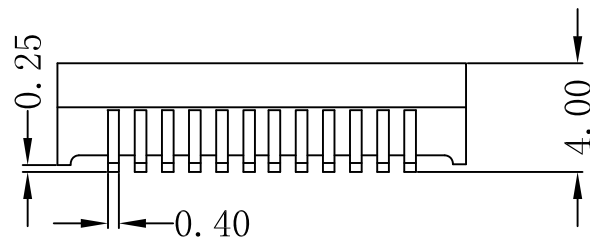
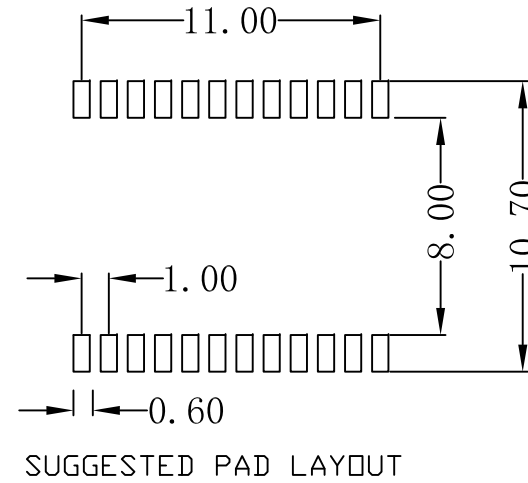
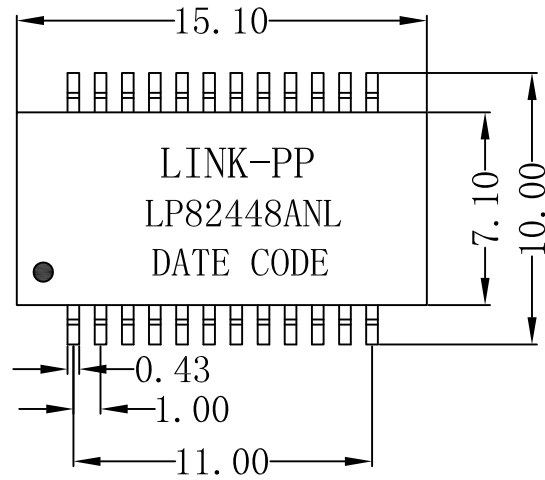
- Turn Ratio (TX/RX):
Pri : Sec = 1CT : 1CT ± 2%
- Inductance OCL: 350uH Min
@100KHz/0.1V 8mA DC BLAS
- Insertion Loss:
1-100MHz: -1.1dB Max
- Return Loss (@100 Ω):
1-30MHz: -18dB Min
30-60MHz: -16dB Min
60-80MHz: -12dB Min
80-100MHz: -10dB Min
- Crosstalk:
1-60MHz: -42dB Min
60-100MHz: -35dB Min
- Common Mode Rejection Ratio:
1-30MHz: -40dB Min
60MHz: -35dB Min
80-100MHz: -30dB Min
- Isolation Hipot: 1500VAC 1Sec 0.5mA
- Operating Temperature: -40°C ~ +85°C



X:X	APPD:	LINK-PP INT'L TECHNOLOGY CO., LIMITED		
X:XX ±0.25	CHKD:	TITLE: 1000Base-T Magnetics Modules		
X:XXX	DR: TOM	PART NO.: LP82448ANL		
ANGLES ±1°	UNIT: mm			
	SCALE: 2/1	SHEET: 1/2	REV: A	DWG NO.: LP10102126

Mechanical:

REV.	ECN NO.	DESCRIPTION	DATE	APPD
A	REL		2010/10/21	



NOTES

1. Designed For Gigabit Transceivers
2. Peak Reflow Temperature Rating 250°C
3. Magnetics, Designed For Gigabit PHY Used In Backplane.
4. Compliant With IEEE 802.3ab Standard.
5. UL Certification: File Number E484635.

X:X	APPD:	LINK-PP INT'L TECHNOLOGY CO., LIMITED
X:XX ±0.25	CHKD:	
X:XXX	DR: TOM	TITLE: 1000Base-T Magnetics Modules
ANGLES ±1°	UNIT: mm	PART NO.: LP82448ANL
	SCALE: 2/1	SHEET: 2/2
	REV: A	DWG NO.: LP10102126