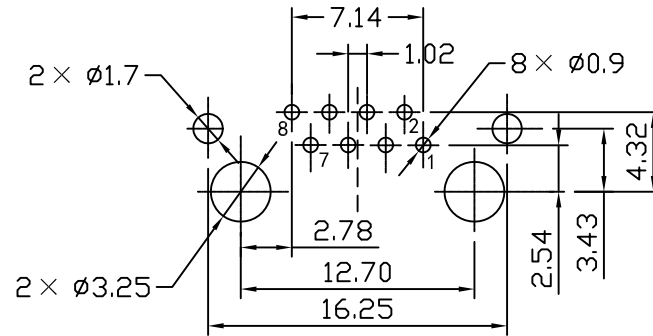
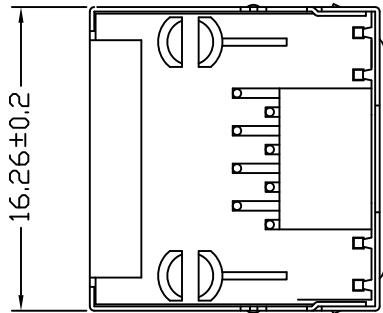
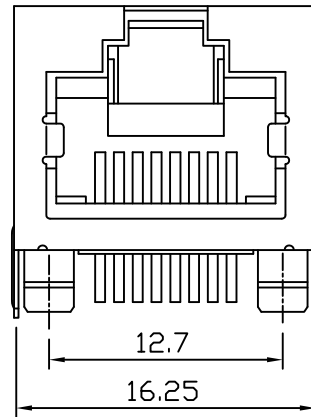
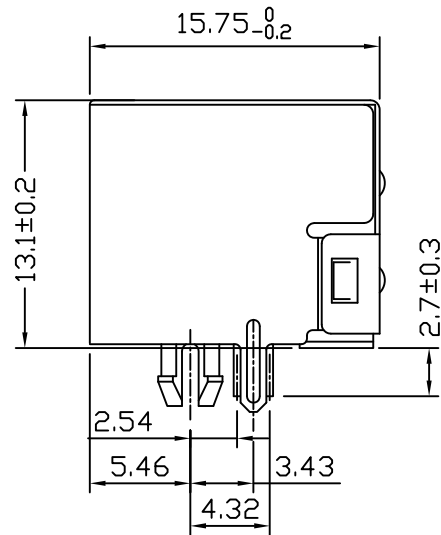


Mechanical:

REV.	ECN NO.	DESCRIPTION	DATE	APPD
A	REL		17/09/2009	



SUGGESTED PCB LAYOUT (TOP VIEW)



NOTES:

MACHANICAL:

- | | |
|------------------------------|---|
| 1. HOUSING MATERIAL | : PA46, UL94V-0. |
| 2. CONTACT MATERIAL | : PHOSPHOR BRONZE t=0.35mm. |
| 3. PLATING | : CONTACT AREA-SELECTIVE 15U".
TAILS-PLATED TIN OVER NICKEL. |
| 4. OPERATING LIFE | : 750 CYCLES MIN |
| 5. PCB RETENTION PRE-SOLDER | : 1 LB MIN |
| 6. PCB RETENTION POST-SOLDER | : 10 LBS MIM |

ELECTRICAL:

- | | |
|--------------------------|------------------------------|
| 1. VOLTAGE RATING | : 125VAC RMS. |
| 2. CURRENT RATING | : 1.5AMP. |
| 3. CONTACT RESISTANCE | : 50 MILLIOHMS MAX. |
| 4. INSULATION RESISTANCE | : 1000MEGOHMS MIN @ 500V DC. |
| 5. DIELECTRIC STRENGTH | : 1500VAC or 2250VDC. |
| 6. GOLD PLATING: | |

(Gold Flash, 1.5, 3, 6, 15, 30, 50)U" Inch

ENVIRONMENTAL:

- | | |
|--------------------------------|-----------------------|
| 1. STORAGE | : -40°C ~ +85°C. |
| 2. OPERATION | : -40°C ~ +85°C. |
| 3. Wave Soldering Temperature: | : 265°C (5~10Seconds) |

MATES WITH MODULAR PLUG CONFORMING TO FCC PART 68, SUBPART F.



X:X ±0.25	APPD:	LINK-PP INT'L TECHNOLOGY CO., LIMITED
X:XX ±0.20	CHKD:	
X:XXX ±0.05	DR: TOM	TITLE: RJ45 1×1 CONNECTOR
ANGLES ±1°	UNIT: mm	PART NO.: LPJE101DNL
	SCALE: 2/1	SHEET: 1/1
	REV: A	DWG NO.: LP09091712