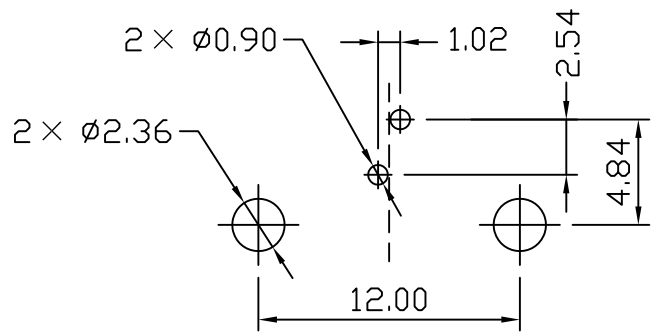
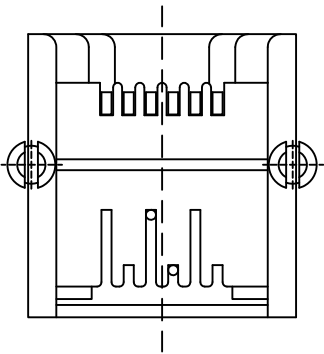
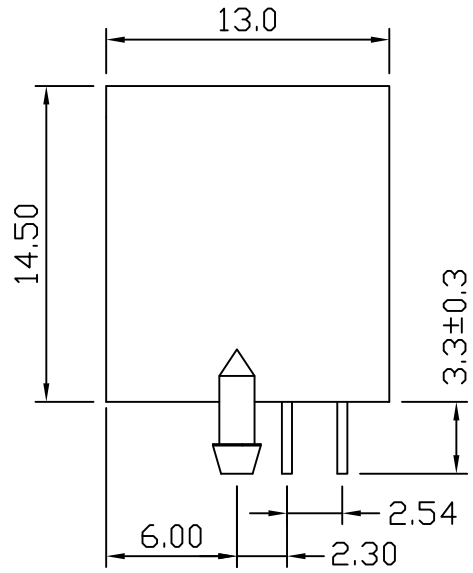
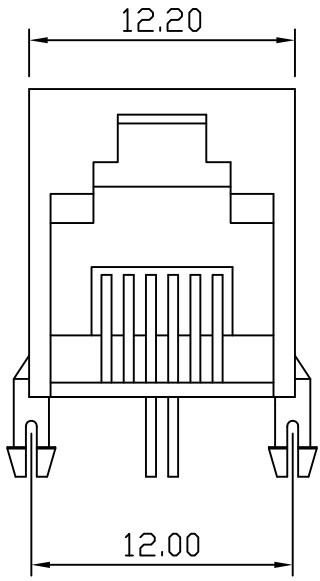


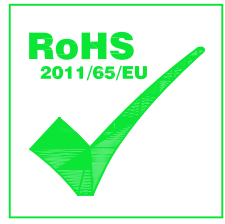
Mechanical:

REV.	ECN NO.	DESCRIPTION	DATE	APPD
A	REL		2014/09/28	



PC Board Layout (Top View)

- NOTES:**
- MATERIAL:**
- 1. HOUSING MATERIAL : GLASS FILLED POLYESTER UL94V-0.
 - 2. CONTACT MATERIAL : PHOSPHOR BRONZE ϕ 0.46mm.
 - 3. PLATING : GOLD PLATING OVER NICKEL.
 - 4. GOLD PLATING : (Gold Flash; 1.5;3;6;15;30;50)U" Inch
- ELECTRICAL:**
- 1. VOLTAGE RATING : 125VAC RMS.
 - 2. CURRENT RATING : 1.5AMP.
 - 3. CONTACT RESISTANCE : 30 MILLIOHMS MAX.
 - 4. INSULATION RESISTANCE : 500MEGOHMS MIN @ 500V DC.
 - 5. DIELECTRIC WITHSTANDING RESISTANCE : 1000V AC RMS 50Hz. 1MIN.
- MECHANICAL:**
- 1. DURRABILITY : 750 CYCLES MIN.
 - 2. PCB RETENTION PRE-SOLDER : 1LB MIN.
- ENVIRONMENTAL:**
- 1. STORAGE : -40°C TO +85°C.
 - 2. OPERATION : -40°C TO +70°C.
 - 3. WAVE SOLDER TEMPURTURE : 230°C to 250°C, 5~10 Sec.



X:X ±0.30	APPD:	LINK-PP INT'L TECHNOLOGY CO., LIMITED		
X:XX ±0.25	CHKD:	TITLE:		
X:XXX ±0.10	DR: TOM	RJ11 1×1 CONNECTOR (6P 2C)		
ANGLES ±1°	UNIT: mm	PART NO. : LPJE8012NNL		
	SCALE: 2/1	SHEET: 1/1	REV: A	DWG NO. : LP14092801